

LB Manufacturing Logo



Start of (Cattle Chutes)

HVC25 Hoof Vet Care Chute - (Product details below.)

- AHG2011 Automatic Headgate standard
- Composite rot resistant tongue and groove flooring with traction milled surface for safe footing and less animal stress
- Front and back Belly Belts provide better animal stability
- Side gates for optimal animal access
- Reverse Swing Rear Leg Lifter (specify when ordering)
- Available Powder-Coated or Hot-Dipped Galvanized
- SK2020 Scale Kit option for accurately weighing animals being sold or during routine animal care
- Assembled with Stainless Steel Fasteners
- Dimensions: Width - 40", Length - 92", Height - 82" - weight 1,060 lbs.



ECC12 Cattle Chute

- AHG2011 Automatic Headgate standard
- Composite rot resistant tongue and groove flooring with traction milled surface for safe footing and less animal stress
- Heavy-duty materials manufactured with precision
- Each side has two gate panels
- Standard with rear swinging gate
- Available Powder-Coated or Hot-Dipped Galvanized
- SK2020 Scale Kit option for accurately weighing animals being sold or during routine animal care
- Assembled with Stainless Steel Fasteners
- Dimensions: Width - 38", Length - 94", Height - 78" - weight 1,040 lbs.



ECC22 Cattle Chute (Single Side Gate)

- Standard with AHG2011 Automatic Headgate
- Composite rot resistant tongue and groove flooring with traction milled surface for safe footing and less animal stress
- Single side gate design increases functionality when sorting animals
- Single hinged gate can easily be mounted on either side
- Side gate swings open 110°
- Solid panel at bottom of side gate provides added safety for the animal and the operator
- Standard with rear swinging gate
- Available Powder-Coated or Hot-Dipped Galvanized
- SK2020 Scale Kit option for accurately weighing animals being sold or during routine animal care
- Assembled with Stainless Steel Fasteners
- Dimensions: Width - 38", Length - 94", Height - 78" - weight 1,005 lbs.



SC2023 Squeeze Chute - (Product details below.)

- Standard with AHG2011 Automatic Headgate
- Composite rot resistant tongue and groove flooring with traction milled surface for safe footing and less animal stress
- Durable indestructible design
- Side panel top and bottom squeeze separately
- Standard with rear swinging gate
- Top loops fold down independently for improved animal access, spring-loaded bolt closes by pushing loop back in place
- Two bottom access gates (both sides), latch by pushing shut
- SK2020 Scale Kit option for accurately weighing animals being sold or during routine animal care
- Available Powder-Coated or Hot-Dipped Galvanized
- Assembled with Stainless Steel Fasteners
- Dimensions: Width - 45", Length - 94", Height - 84" - weight 1,600 lbs.



Chute Option/Accessories

Optional SK2020 Scale Kit

Large, easy-to-read DIGI★STAR EZ400 display can be mounted on the left or right side of the chute. Durable swivel base allows plenty of adjustment for the ideal operator viewing position.

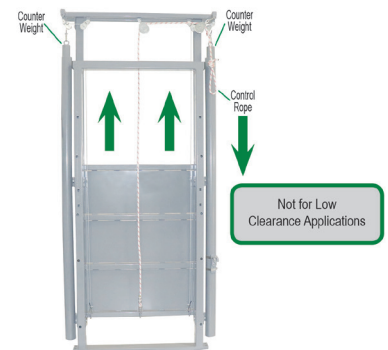
Digital Display

Sensors



VG2022 Vertical Rear Gate

The Vertical Rear Gate can be controlled with one hand by pulling down on the control rope. The gates counterweight design makes for smooth closing when rope is released.



Optional AHG050 Nose Bar Kit

Secures the animal's head when vaccinating or administering other shots.



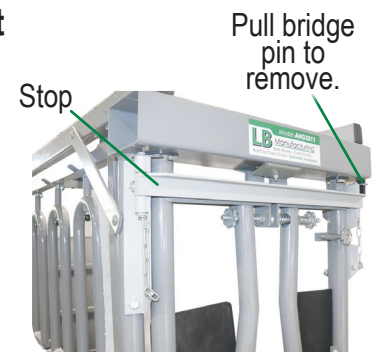
Optional PCDB2023 Poly Carb Display Box

The poly carbonate material makes this box ultra strong to protect your scale kit display from potential animal damage.



Optional AHG075 Stop Kit

Additional gate stop for use on AHG2011 Automatic Headgate. Provides extra security when animals aren't released through the headgate. Pull one pin to swing stop out of the way for access through headgate. Pull both pins and bar can be removed for normal function.



GATE-7 (54" high) Gate & Hinge Brackets

Add a heavy-duty 7' galvanized gate to the rear of the chute. Helps to increase flow of the animals by creating the start of an alleyway.



AHG2025 Automatic Headgate

We designed our Automatic Headgate to provide safety for both the animal and operator.

- Heavy-duty door panels are designed for quieter operation
- Door design keeps hooves from getting cut
- Mounting holes 33" center-to-center From floor: 1st hole 13-3/4", 2nd hole 45-3/4"
- Fully opens to 25-3/4"
- Spring-loaded door panels return to loading position to receive the next animal
- Available (Powder-Coated on top of Zinc Rich Primer) or (Hot-Dipped Galvanized)
- Assembled with Stainless Steel Fasteners
- Dimensions: Width - 38", Height - 72"
- Weight: 234 lbs.



MHG2023 Manual Headgate

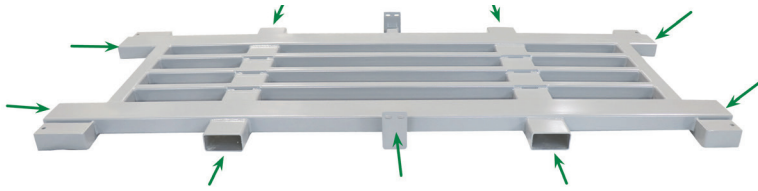
Designed specifically for horned and mixed animal sizes.

- Fits all LB Manufacturing Chutes
- Full width 3/8" thick heavy-duty polyethylene panels ensure the animals head goes through center of headgate.
- Greasable pivot points for smooth and quiet operation
- Available (Powder-Coated on top of Zinc Rich Primer) or (Hot-Dipped Galvanized)
- Spring loaded latch makes headgate adjustable for all sizes of animals and prevents being pushed open when handle is released
- Can be custom manufactured to operate from the other side. Please specify when ordering.
- Assembled with Stainless Steel Fasteners
- Dimensions: Width - 49", Height - 81"
- Weight: 250 lbs.



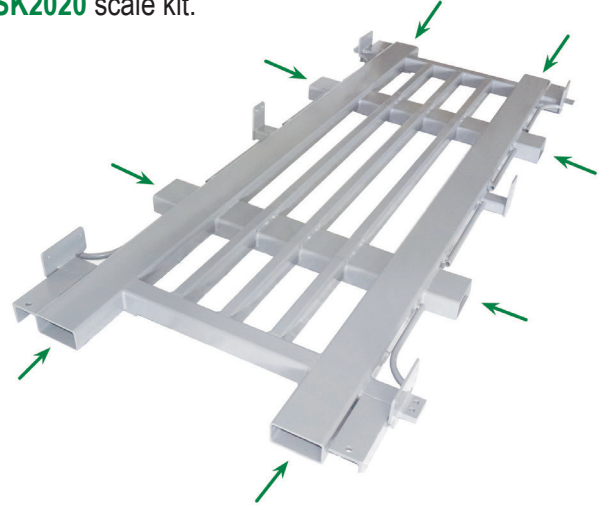
FPSF2021 - Fork Pocket Sub-Frame

This chute sub-frame offers pockets on the sides and ends for added flexibility when maneuvering the chute.



FPSKSF2022 - Fork Pocket (Scale Kit) Sub-Frame

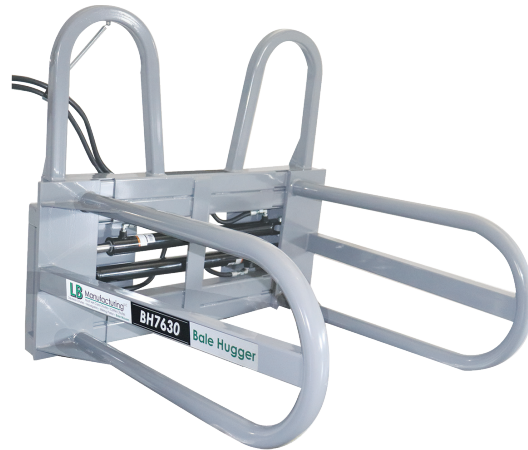
This scale kit sub-frame offers pockets on the sub-frame sides and ends for added flexibility when being used with the SK2020 scale kit.



Start of (Bale Huggers)

BH7630 Bale Hugger

- Universal Quick-Attach or Euro-Global Attach (Other attachments available upon request.)
- Round or Square Bales
- 36" or 42" Arm Length
- Dual Cylinders Enable Grabbing Bales OFF-CENTER
- Opens From 30" - 76" (Narrow closing width enables grabbing bales from end.)



BH10244 Bale Hugger

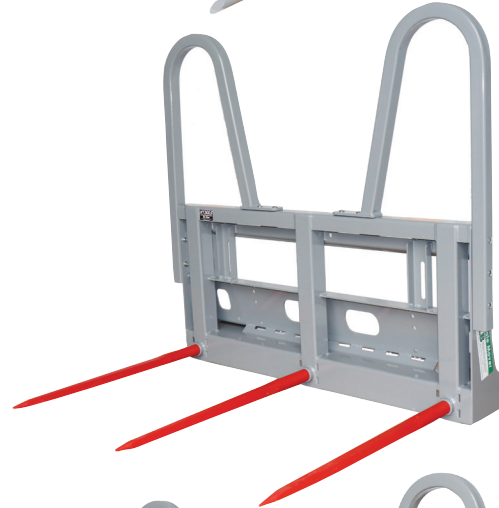
- Similar to the BH7630 but designed for larger 4' x 4' x 8' bales
- Universal Quick-Attach or Euro-Global Attach (Other attachments available upon request.)
- Round or Square Bales
- 42" Arm Length
- Dual Cylinders Enable Grabbing Bales OFF-CENTER
- Opens From 44" - 102" (Narrow closing width enables grabbing bales from end.)



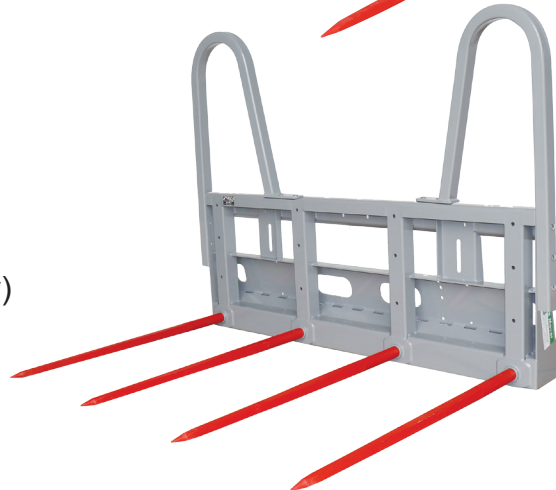
HT250R - Round Bale Frame (2,500 lb. capacity)
(Shown with optional HTR300 Back Rack Kit.)



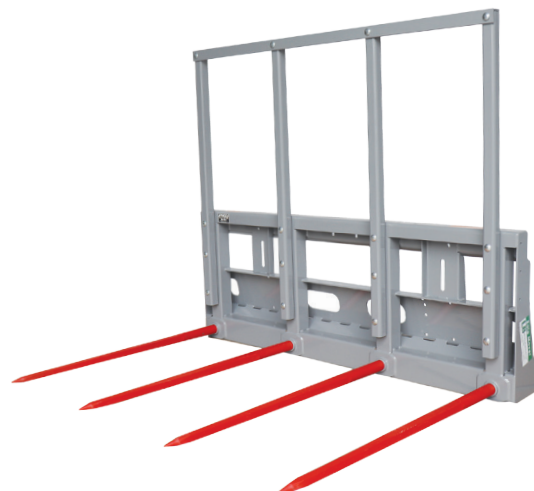
HT300S - Square Bale Frame (3,000 lb. capacity)
(Shown with optional HTR300 Back Rack Kit.)



HT400S - Square Bale Frame (4,000 lb. capacity)
(Shown with optional HTR300 Back Rack Kit.)



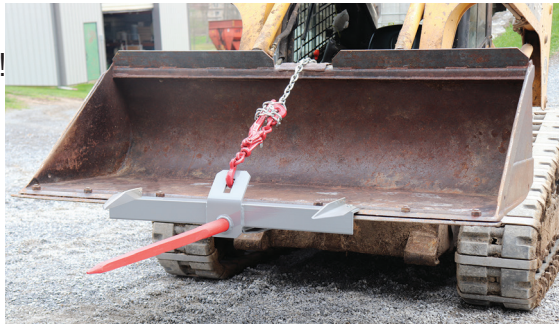
HT400S - Square Bale Frame (4,000 lb. capacity)
(Shown with optional HTR400 Back Rack Kit.)



SSL251 - 1- Prong Bucket Attachment

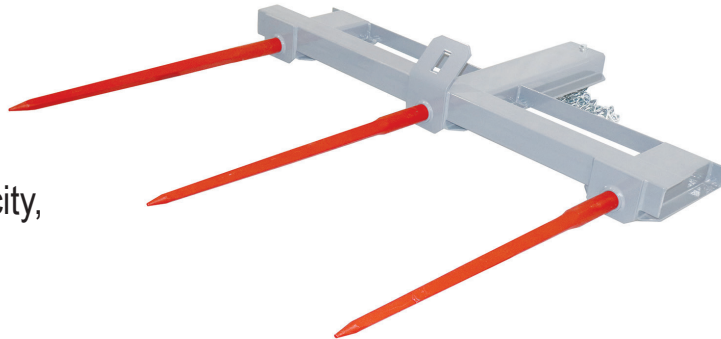
Easily attach this single prong attachment to your existing bucket!

Slide onto bucket edge and close chain binder.



SSL253 3-Prong Bucket Attachment

In addition to our 1- prong Bucket Attachment with a 2,500 lb. capacity, there's also a 3-prong with a 3,000 lb. capacity.



SP12500

1-1/4" x 24" Stabilizer Prongs (not forged)



SC02500

Heavy-Duty Prong Socket



Heavy-Duty 1-3/4" Prongs (forged)



PRO2532 (32")



PRO2538 (38")



PRO2543 (43")



PRO2548 (48")

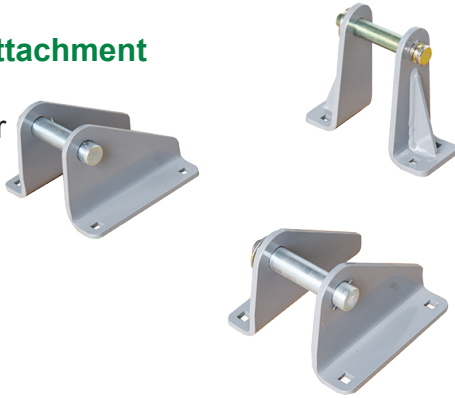
Bale Spear Attachment Options

All Bale Spear Frames are designed with the Universal Skidloader Quick-Attach as standard hookup.

HT3PT

3PT Hitch Attachment

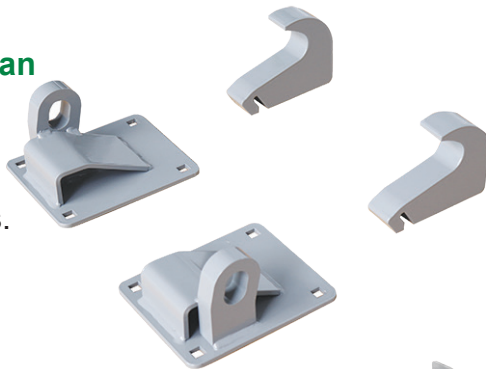
Available for all bale spear frames.



HTQK

Quickie / European Style / Global Quick-Attach -

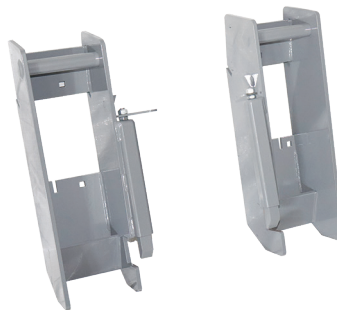
Available for all bale spear frames.



JD640

John Deere 640 Attachment Kit

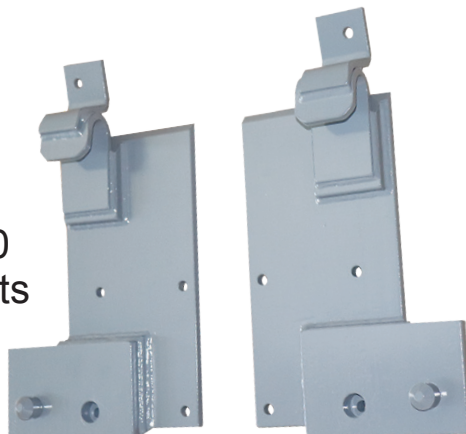
Fits HT300S and HT400S bale spear frames.



JD 400/500

John Deere 400 or 500 Series Adapter Brackets

Fits HT250R, HT300S and HT400S bale spear frames.



- The LS96 Walk-Through Milking Parlor equipment rack supports all milking systems and conveniently adjusts to accommodate any milking unit.
- Smooth and quiet operation with UHMW synthetic bushings on all the door hinges and noise absorbing soft rubber bumpers used on the stops.
- Heavy-duty frame manufactured with 3" x 1 1/2" x 3/16" steel gate posts and schedule 40 pipe gates.
- Cows step up 0"-16"
- Unique latch system:
 - Keeps doors *in unlocked position* until cow has exited.
 - Operates by *direct pull rod linkage*.
 - Manufactured with *brass bushings on rocker arm assembly* for durability and function.
- Cam balanced spring automatically positions door to receive next cow.
- Doors operated by cross-link tie rods.



Optional Accessories

Anchor Channel Kit
LS96PCAC



Stainless Steel Curb 30"
LS96SSCU30



Seat Kit
LS96SE



LS96 Reduced Width Headlock

Have smaller animals that require a reduced headlock width? Specify when ordering at no additional cost!



LS96 E-Release Option

'Manual back-latch release' eliminates the need to move a cow out of the stall to reset gate after an accidental mis-latch. Standard with newly ordered parlors. Can be added anytime to parlors in the field.

