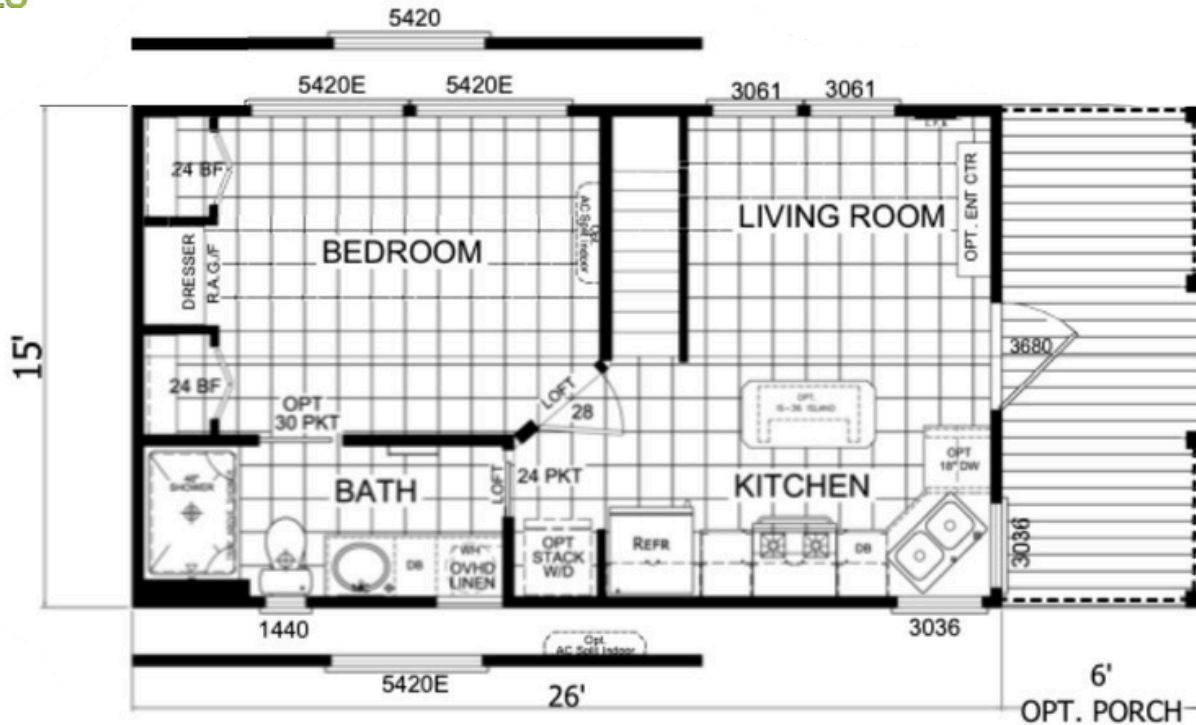




FACTORY SHOWCASE
HOMES

682-400-8590



MODEL APS-630-SL

1 BEDROOM, 1 BATH
ACTUAL SIZE: 15' x 26'
TOTAL AREA: 399 SF

Starting at:

\$ _____

Good till:

Base price includes delivery within 100 miles, heat & air system, stainless steel electric coiled oven range & stainless steel 18 cf fridge.

ANSI 119.5 & RVIA inspected and certified.

Due to continuous improvements, productspecifications,andcurrentmarketingpricingfloorplans/pricing are subject to change without notice

Factory Showcase Homes

The Park Model RV Aframe 500 is a compact, stylish living solution designed for efficient comfort in a 373 sq. ft. footprint. With a generous 13'4" width and 28' length, this model offers an open-concept layout and a striking end-wall view that maximizes light and space. A welcoming, open living area flows from the side entry into the main living space, creating an airy feel right from the doorstep with a Stunning End Wall window View enhances the sense of space and connection to the outdoors. There is a Framed window above the sink for natural light & Under-cabinet refrigerator for a clean, streamlined look. 20-gallon water heater for efficient hot water supply, Cooktop burner & Built-in cubbies for convenient storage and organization, A 36" x 80" door opens into the bedroom, providing easy access from the main living area. Built-in nightstand for bedside convenience with enough room for Queen bed. A 36" pocket door to optimize floor plan flow & 34" x 48" one-piece fiberglass shower for easy cleaning and a modern look. The home is Designed for long-lasting use and low maintenance. Exterior Smart paneling and Galvalume metal roof & Vinyl flooring throughout.

- *Popular options include, upgraded exterior siding, Colored roof options to suit personal style. A variety of cabinet and color options to customize the interior aesthetics. A range of add-ons to expand utility and comfort.*
- *Optional full-size refrigerator*
- *Optional washer and dryer connections in the bedroom*
- *Optional linen cabinets for extra storage*
- *Optional tile shower for a premium feel*
- *Optional convection oven in place of a traditional microwave.*
- *Optional sliding glass door in place of the side-entry door*
- *Optional floating shelves in place of cabinetry.*



FACTORY SHOWCASE
HOMES