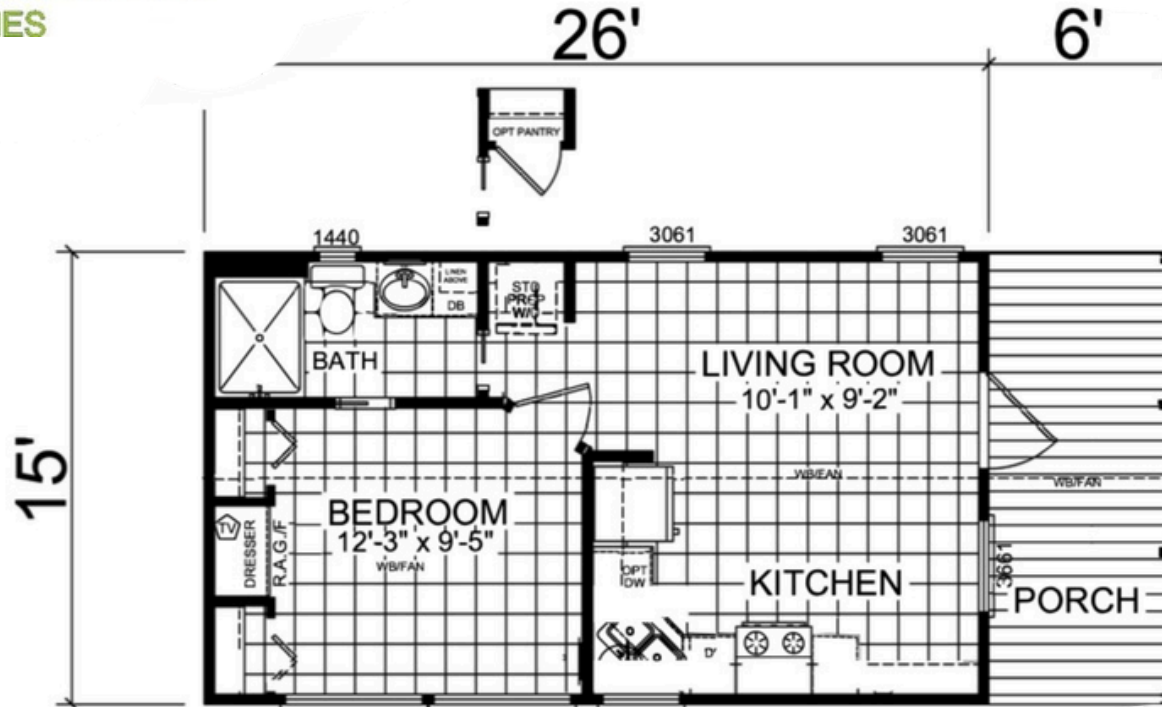




FACTORY SHOWCASE  
HOMES

682-400-8590



**MODEL APS-601**  
1 BEDROOM, 1 BATH  
ACTUAL SIZE: 15'-0" x 26'-0"  
TOTAL AREA: 398.6 SQ. FT.



Starting at:

\$ \_\_\_\_\_

Good till:

\_\_\_\_\_

**Base price includes delivery within 100 miles, heat & air system, stainless steel electric coiled oven range & stainless steel 18 cf fridge.**

**ANSI 119.5 & RVIA inspected and certified.**

\*Due to continuous improvements, productspecifications,andcurrentmarketingpricingfloorplans/pricing are subject to change without notice\*

# Factory Showcase Homes

Experience compact luxury with style and smart design in our Park Model 601. The footprint is 15 feet by 26 feet with a 6-foot standard covered deck. The living room is approximately 10' 1" x 9' 2" for an open concept. It has a 12' 3" x 9' 5" approximate size bedroom with built-in closets and bifold doors, along with a built-in dresser. It also has a pocket door from the bedroom to the bathroom, which is standard. The back-corner kitchen arrangement features a double-basin stainless steel sink with one standard 4615 clear-story window in the kitchen area. It also comes with an 18 cu ft black refrigerator and an electric coil oven range with nickel-plated hardware throughout. The standard roof pitch for this 15-wide model is 6/12 with the vaulted ceiling. Smart panel is the standard exterior with the Galvalume silver roof. The plumbing for a stackable 24-inch washer and dryer is included, but not the unit itself.

## *Popular options*

- Front patio up to 10 ft covered*
- Back deck up to 10 ft with privacy railing, and covered by omitting the dresser for the door*
- Exterior siding with four or five rows of lap or batt on board cement, fiber board*
- Rolling barn doors (instead of bifold doors)*
- Optional pantry (replaces standard plumbing area with washer/dryer)*
- Move front door in place of kitchen window*
- Omit the entertainment center*
- 10 ft flat ceilings (instead of vaulted)*
- Cabinet upgrades*
- Rolling island*
- Tile backsplash to bottom of the -kitchen cabinets*
- Walk-in style closet (in place of two closets and dresser)*
- Additional/upgraded window configurations*



**FACTORY SHOWCASE**  
**HOMES**