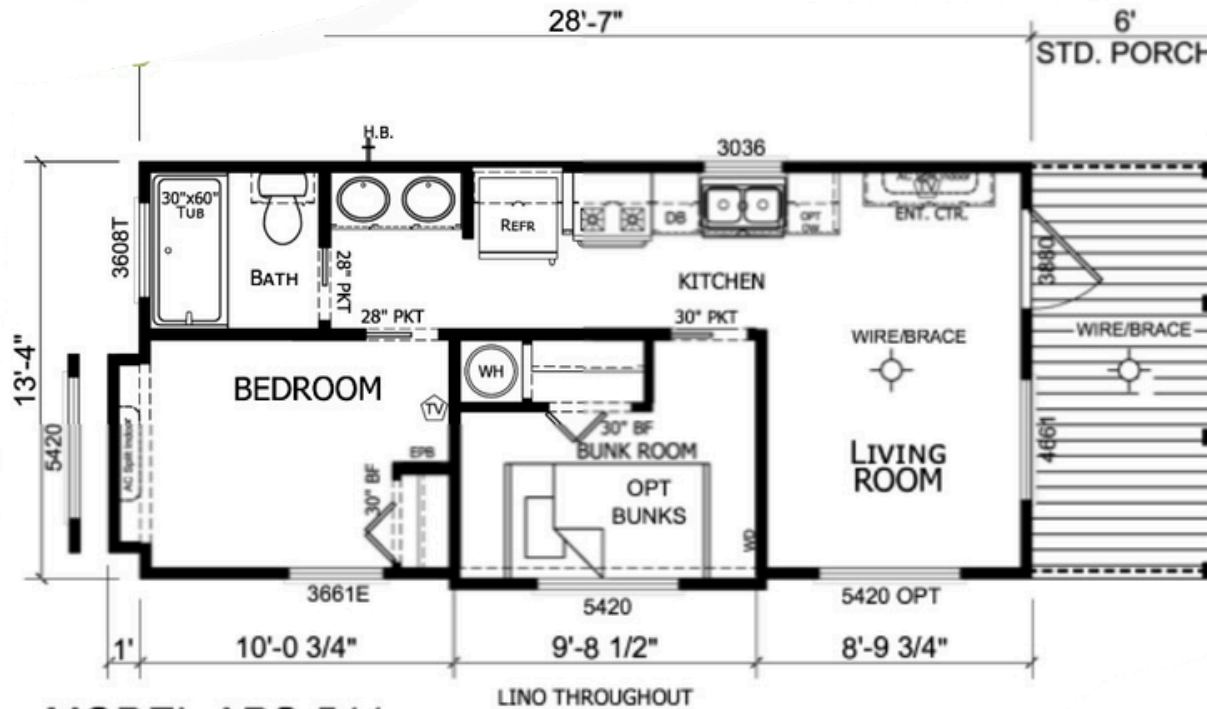




**FACTORY SHOWCASE
HOMES**

WWW.FACTORYSHOWCASEHOMES.COM

682-400-8590



MODEL APS-544

2 BEDROOM, 1 BATH
ACTUAL SIZE: 13' 4" x 28'-7"
TOTAL AREA: 399 SQ. FT.

Starting at:

\$ _____

Good till:

Base price includes delivery within 100 miles, heat & air system, stainless steel electric coiled oven range & stainless steel 18 cf fridge.

ANSI 119.5 & RVIA inspected and certified.

Due to continuous improvements, productspecifications,andcurrentmarketingpricingfloorplans/pricing are subject to change without notice

Factory Showcase Homes

This compact luxury Park Model Rv model 544 is designed for comfort, convenience, and style in a 399 sq. ft. footprint. It is a Two bedroom with one-bath configuration that is 13'4" x 28'7" with a Standard 6' covered front porch that's wired and ready for a ceiling fan. The kitchen side wall is where the entertainment center is located. It does have the traditional Vaulted roof design to create an open, airy feel with the Standard 28" pocket doors to the master bedroom and to the bathroom for a clean, modern look although there is a 30 inch pocket door to the second bedroom. It includes a 30" x 60" bathtub and Double vanity sink. Also included are the 18 cu ft black refrigerator & Black electric coil oven range. Bedrooms have Bifold doors on the closets.

Popular upgrades and options,

- Extend covered front patio up to 10 feet in length.***
- Omit entertainment center for a Wall-mount TV.***
- Add staircase & loft***
- 10 foot flat ceilings***
- Omit closets in second bedroom by keep only the hanging rod and shelf.***
- Omit second bathroom sink & replace it with an overhead cabinet.***
- Refrigerator moved down the kitchen wall to create space for 24-inch stackable washer/dryer next to the refrigerator.***
- Washer and dryer connections inside the second bedroom.***
- Tile shower in place of tub***
- Additional windows***
- Ceiling fan in the bedroom***



FACTORY SHOWCASE
HOMES