



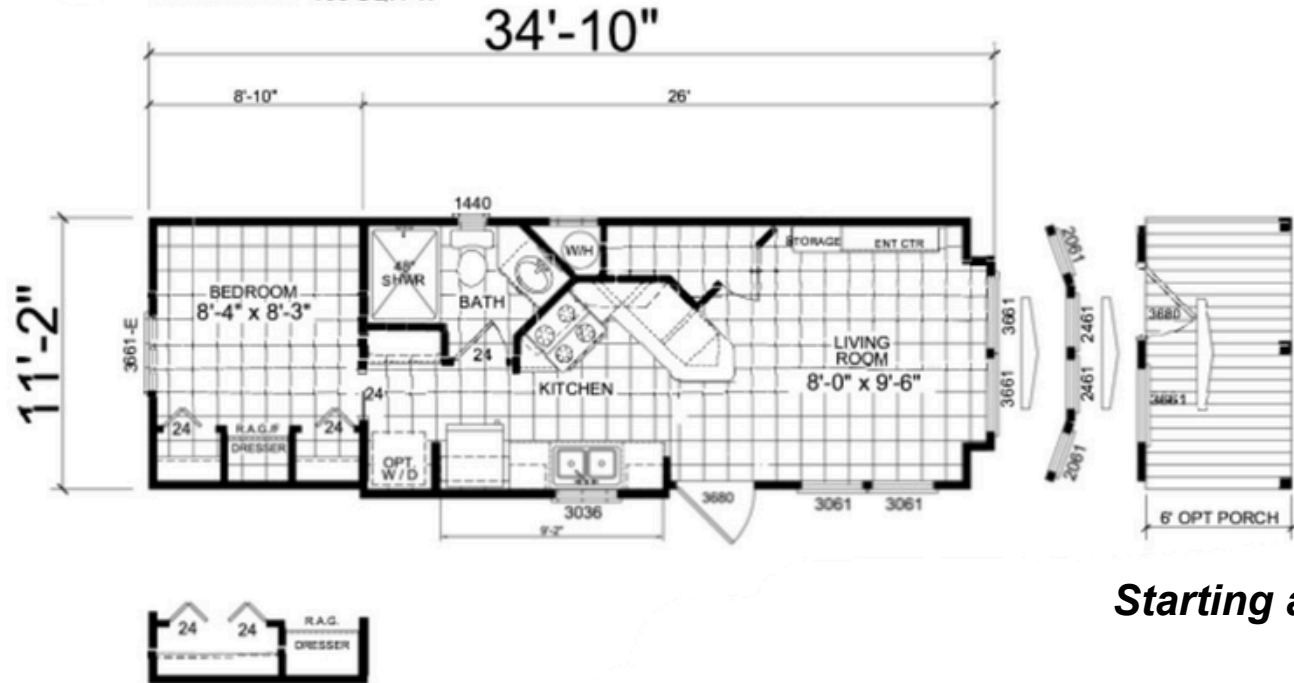
**FACTORY SHOWCASE  
HOMES**

**WWW.FACTORYSHOWCASEHOMES.COM**

**682-400-8590**

**MODEL APS-527-B**

1 BEDROOM, 1 BATH  
ACTUAL SIZE: 11'-2" x 34'-5"  
TOTAL AREA: 399 SQ. FT.



**Starting at:**

\$ \_\_\_\_\_

**Good till:**

\_\_\_\_\_

**Base price includes delivery within 100 miles, heat & air system, stainless steel electric coiled oven range & stainless steel 18 cf fridge.**

**ANSI 119.5 & RVIA inspected and certified.**

**\*Due to continuous improvements, productspecifications,andcurrentmarketingpricingfloorplans/pricing are subject to change without notice\***

# Factory Showcase Homes

**Park Model Rv 527B Discover comfort and style in this beautifully designed Park Model RV, model 527B. Thoughtfully laid out to maximize space and convenience, this unit is perfect for a relaxing getaway or a long-term retreat with front-end box windows. Convenient access with a welcoming side entry.**

**Ample storage for dry goods and kitchen essentials in the walk-in pantry, or it can be used as a coat closet. Built-in entertainment storage includes three-door cabinets. Featuring a peninsula island kitchen ideal for entertaining and cooking. Large 48" shower with rolling doors. Built-in linen and coffee bar cabinetry in the hallway. Overall footprint: 11'2" by 34'10". Bedroom accommodates a queen-size bed with two bi-fold door closets and a built-in dresser. Standard 20-gallon water heater. White cabinets with nickel-plated hardware are standard. Black electric coil oven range and black 18 cu ft refrigerator come standard. 24" apartment-size, stackable washer and dryer connections are standard, but the unit itself is not. 8/12 pitch vaulted ceiling creates a bright and airy interior.**

Popular options include,

- Exterior siding options: board-and-batten accents or lap siding.
- Optional front door on the end of the home with a porch up to 10 feet long, covered with a metal railing and wired for a ceiling fan.
- Additional window options, such as the four-window bay window in the front living room.
- Loft option covering approximately 180 ft<sup>2</sup> with stairs (not a ladder) as an upgrade option for \$5,500.
- Staircase to the loft in place of the pantry, with the optional 30-gallon water heater underneath the staircase.
- Tile shower options.
- Alternative bedroom closet configurations.
- Additional black or stainless steel appliance upgrade packages.
- Optional stainless steel farmhouse sink with a spray head faucet or garbage disposal.
- 18-inch or 24-inch dishwasher capacity available as an upgrade.



**FACTORY SHOWCASE**  
**HOMES**