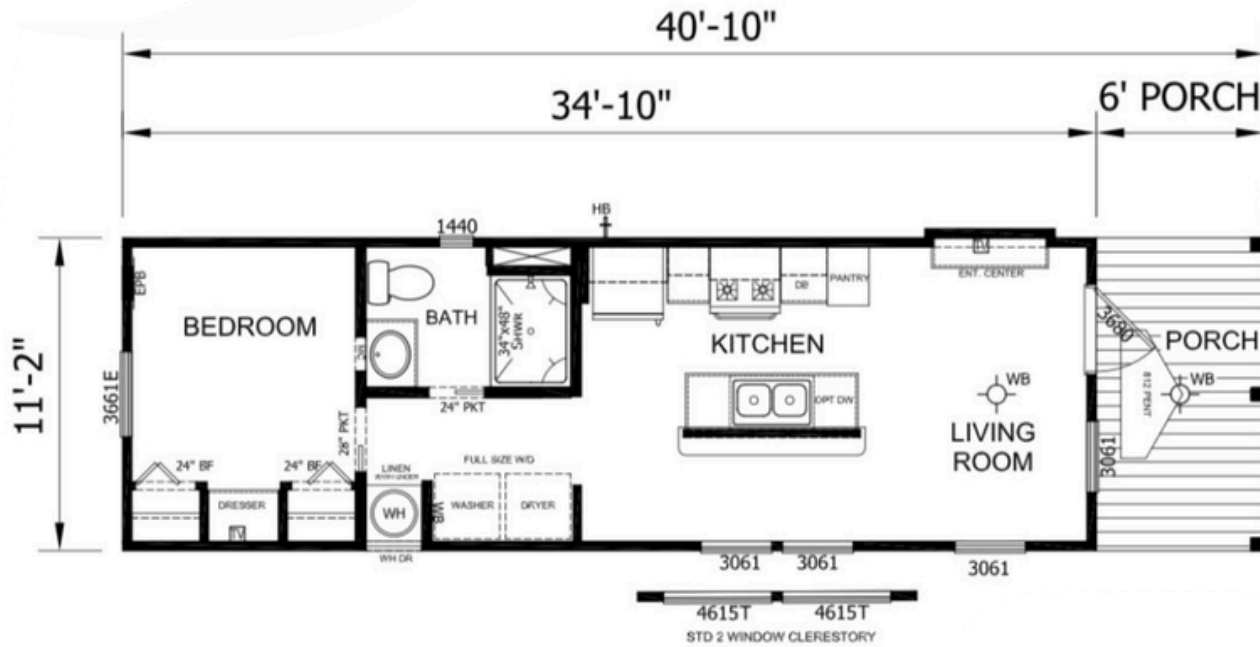




**FACTORY SHOWCASE  
HOMES**

**WWW.FACTORYSHOWCASEHOMES.COM**

**682-400-8590**



**APS-602**  
1 BEDROOM 1 BATH  
11'-2" x 34'-10"  
399 Sq. Ft. TOTAL

**Starting at:**

\$ \_\_\_\_\_

**Good till:**

\_\_\_\_\_

**Base price includes delivery within 100 miles, heat & air system, stainless steel electric coiled oven range & stainless steel 18 cf fridge.**

**ANSI 119.5 & RVIA inspected and certified.**

**\*Due to continuous improvements, productspecifications,andcurrentmarketingpricingfloorplans/pricing are subject to change without notice\***

# Factory Showcase Homes

**This Park Model 602 measures Width: 11'2"**

**Length: 34'10" (base) with a 6' standard porch, bringing total length to 40' x 10" , Smart panel exterior, PENT window above the front door, Built-in entertainment center, gorgeous sink in the island that overlooks a breakfast bar, 24" pocket door into the bathroom, 34" x 48" one-piece fiberglass shower, 28" pocket door to the master bedroom and Master suite features his-and-her bifold closets and a built-in dresser.**

## **Popular upgrade options**

- **Front porch extended to 10 feet (instead of 6 feet)**
- **Exterior upgrade to cement fiber board**
- **Upgrade the kitchen sink to a stainless steel farmhouse sink**
- **Add a dishwasher**
- **Optional single loft**
- **Optional 30-gallon water heater from 20 gallon**
- **Optional tile shower**
- **Optional 24 inch wide stacked washer and dryer**
- **Option to add a dedicated bedroom door for a back deck Up to 10 feet**



**FACTORY SHOWCASE**  
**HOMES**