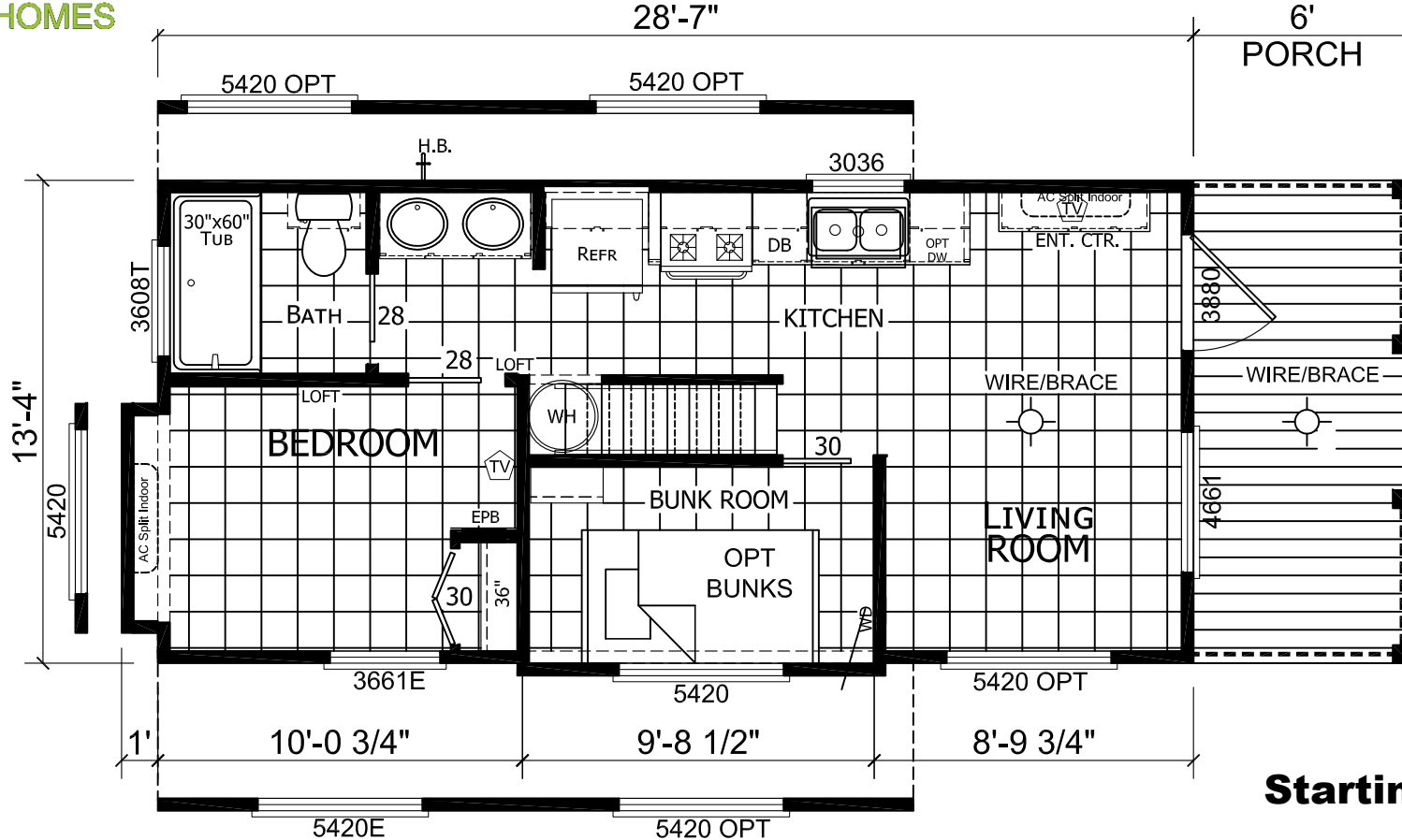




**FACTORY SHOWCASE**  
**HOMES**

[www.factoryshowcasehomes.com](http://www.factoryshowcasehomes.com)

**682-400-8590**



## MODEL APS-L-544-SL

2 BEDROOM, 1 BATH  
ACTUAL SIZE: 13' 4" x 28'-7"  
TOTAL AREA: 399 SQ. FT.

LINO THROUGHOUT

**Starting at:**

\$ \_\_\_\_\_

**Good till:**

\_\_\_\_\_

ANSI 119.5 & RVIA inspected and certified.

\*Due to continuous improvements, product specifications, and current market pricing floorplans/pricing are subject to change without notice\*

**Base price includes delivery & set up within 100 miles, heat & air system, black electric coiled oven range & black 18 cf fridge.**