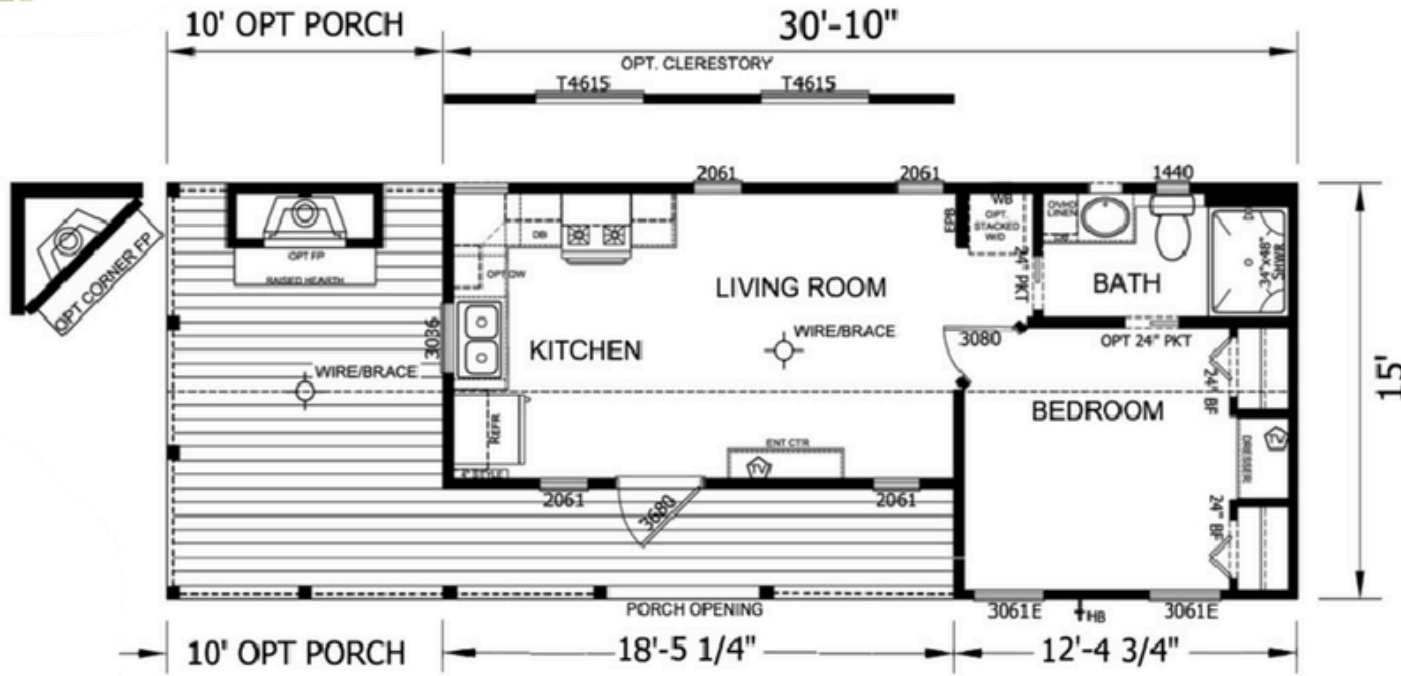


682-400-8590



APS-523
 1 BEDROOM 1 BATH
 15'-0" x 30'-10"
 399 SQ. FT. TOTAL

LINO THROUGHOUT

Starting at:

\$ _____

Good till:

Base price includes delivery within 100 miles, heat & air system, stainless steel electric coiled oven range & stainless steel 18 cf fridge.

ANSI 119.5 & RVIA inspected and certified.

Due to continuous improvements, productspecifications,andcurrentmarketingpricingfloorplans/pricing are subject to change without notice

Factory Showcase Homes

This Park Model RV, Model 523, is 15 ft wide by 30 ft 10 inches long, with an open, spacious layout that enhances the flow between the kitchen and lounging areas. The front-end wall kitchen provides ample space in the living room, with a window over the kitchen sink. It features a bedroom with room for a king bed, a standard built-in dresser, and his-and-hers closets with bifold doors. The shower is a 34" × 48" one-piece fiberglass insert. The front-door-side porch has a covered entry for curb appeal and weather protection when entering.

- *Most popular options and upgrades are:*
- *10' front deck (15' wide)*
- *10' ceiling upgrade*
- *15' wide loft option*
- *Rolling island (matching cabinetry/countertop) option*
- *Tile shower upgrade*
- *Rolling barn doors for the closet in place of bifold doors*
- *Bedroom-to-bathroom pocket door optional*
- *Optional wood-burning exterior fireplace with TV plug*
- *Layout: mirror/rotate/flip (additional cost)*
- *Deluxe stainless steel appliance package or other upgraded appliance packages*
- *18" stainless steel dishwasher*
- *Three-door pantry next to the oven/range as an option for additional storage.*



FACTORY SHOWCASE
HOMES