



Funeral Rites and Customs  
Burial and Cremation Services  
*General Price List*

Proudly serving Newmarket, Aurora,  
East Gwillimbury & surrounding area since 1842



**Roadhouse & Rose**  
FUNERAL HOME

157 Main Street South,  
Newmarket, Ontario L3Y 3Y9

T: 905.895.6631

F: 905.895.4747

E: [info@roadhouseandrose.com](mailto:info@roadhouseandrose.com)

[www.roadhouseandrose.com](http://www.roadhouseandrose.com)

Effective April 15, 2024



# Contents

- 3 *Introduction*
- 4 *Our Team*
- 5 *Funeral Service Packages*
  - Traditional Funeral Service with Burial or Entombment
  - Traditional Funeral Service with Cremation
  - Celebration of Life/Chapel Memorial Service
  - Celebration of Life/Reception
  - Simple Cremation
  - Graveside Service
- 12 *Itemization of Funeral Home Services*
- 16 *Additional Items & Considerations*
- 17 *Disbursements*
- 19 *Merchandise*
- 20 *Caskets*
  - Wooden Caskets
  - Caskets with Personalization Options
  - Cremation Ceremonial/Rental Caskets
  - Cloth Covered Caskets
  - Cremation Caskets
  - Outer Burial Containers
- 32 *Urns*
  - Keepsake Urns
  - Wooden Urns
  - Brass Urns
  - Biodegradable, Scattering Urns
  - Columbarium Urns
  - Companion Urns
- 37 *Keepsake Jewellery*



# Introduction

Thank you for considering Roadhouse & Rose Funeral Home for your professional funeral services needs. Established in 1842, Roadhouse & Rose has been serving Newmarket and area families with professionalism and compassion for over 180 years.

Roadhouse & Rose is a family-owned and operated funeral home. We offer a wide selection of burial and cremation services, and merchandise (caskets, vaults, urns, keepsake jewellery, etc.). This General Price List features the most commonly selected service packages that we offer:

- Traditional Funeral with Burial or Entombment
- Traditional Funeral with Cremation
- Celebration of Life – Chapel Memorial Service
- Celebration of Life – Reception Service
- Graveside Service
- Simple Cremation

## *Our services may be pre-arranged or pre-paid in advance.*

By pre-paying for your final wishes, you relieve your loved ones of the financial burdens at the time of death. You ensure that your wishes are known, and you can purchase services and merchandise at today's cost to avoid inflation. All of our pre-paid funeral services are guaranteed.

Merchandise is outlined in our casket, vault and urn pricelists.

Flower arrangements are provided by our approved local florists, Blooming Wellies and Cassidy's Flowers.

All caskets that we sell are made in Canada



## *Payment Terms*

Payment Terms & Conditions: For a Simple Cremation service, payment is due at the time of the date of arrangement. For other services, payment in full is due within 15 days of the date of the contract signature. For all types of services, preferred payment options are cheque, cash, e-mail transfer or bank draft. Amounts outstanding after that date will bear interest at the rate of 2 % per month, compounded to 26.82 % per annum, from the Due Date until paid in full. There will be a charge of \$25.00 for any non-sufficient funds (NSF) cheques returned by the bank. Any costs of collection shall be the responsibility of the Purchaser. Additional information is available upon request.

## **For those in need of Financial Assistance**

Please note that if the estate of the deceased lacks the necessary funds to cover funeral expenses, the York Region – Department of Social Services may cover the cost of a traditional funeral or direct disposition services. To find out more about this benefit and how the application process works, please ask one of our Funeral Directors.

*Sincerely,*

Wes Playter

Licensed Operator



---

## **Our Team**

### **Licensed Funeral Directors**

Wes Playter, Manager  
Allana Coolahan, Supervisor of Operations  
Herb Fowlie  
Barbara Stanek  
Rachael Bozzetto

### **Funeral Director Assistants**

Brad Bulmer  
John Molyneaux

### **Office Administrator**

Jessica Vlaar

### **Pre-Planning Specialist**

Helena Staruch

### **Project Coordinator**


Dan MacPherson



# Funeral Service *Packages*

---

Please note that all disbursements, including but not limited to newspaper notices, clergy/organist honorariums, coroner fees, registration fees, cemetery fees and crematorium fees are in addition to the following and done so at cost. HST is not included. Please see disbursements pg.18.



# Traditional Funeral Service

## (With Burial or Entombment)

The Traditional Funeral Service Package (for Burial) includes one day of visitation (with 2 visitation periods), a funeral service in the Roadhouse & Rose Chapel, followed by burial or entombment. A casket will need to be selected from the [Casket Price List](#). For burial, depending on the by-laws of the cemetery, an outer container may have to be selected from the [Burial Container Price List](#). For a reception at the Funeral Home, catering, flowers and other tribute supplies, please see our “Itemization of Funeral Services” section.

### Professional Services

Consultation & Planning	\$600
Arranging & Co-Ordination of Services	\$525
Documentation	\$200
Transfer Staff	\$300
From place of death to Funeral Home (2 attendants), from Funeral Home to Graveside (1 attendant)	
Embalming / Postmortem / Special Care (or Minimal Preparation for \$150)	\$400
Staff for Visitation (based on two visitation periods)	\$300
Staff for Ceremony Onsite	\$375

---

**Total Professional Services Fees (based on 2 periods of visitation)    \$2,700**

### Facilities

Facilities - Basic	\$100
Facilities - For Sheltering of Remains	\$200
Facilities - For Visitation (based on two visitation periods)	\$400
Facilities - For Ceremony Onsite	\$500

---

**Total Facilities Fees (based on 2 periods of visitation)    \$2,700**

### Vehicles

Funeral Coach	\$400
Lead/Service Vehicle	\$200
Administration Vehicle	\$100
Transfer Vehicle (for transfer from place of death)	\$100

---

**Total Vehicle Fees    \$800**

---

**Total Price for a Traditional Funeral with Burial or Entombment    \$4,700**

---

\* For services in churches, residences, etc., please see page 13.

# Traditional Funeral Service

## (With Cremation)

The Traditional Funeral Service Package (for Cremation) includes one day of visitation (with 2 visitation periods), a funeral service in the Roadhouse & Rose Chapel, followed by cremation. A casket will need to be selected from the [Casket Price List](#). You also have the option of using a “Rental Casket”, featured on the [Casket Price List](#). An Urn can be selected from the [Urn Price List](#). For a reception at the Funeral Home, catering, flowers and other tribute supplies, please see our “Itemization of Funeral Services” section.

### Professional Services

Consultation & Planning	\$600
Arranging & Co-Ordination of Services	\$525
Documentation	\$200
Transfer Staff	\$400
From place of death to Funeral Home, from Funeral Home to Crematorium and from Crematorium, back to Funeral Home based on a one attendant transfer	
Embalming / Postmortem / Special Care (or Minimal Preparation for \$150)	\$400
Staff for Visitation (based on two visitation periods)	\$300
Staff for Ceremony Onsite	\$375

---

### Total Professional Services Fees (based on 2 periods of visitation) **\$2,800**

Facilities - Basic	\$100
Facilities - For Sheltering of Remains	\$200
Facilities - For Visitation (based on two visitation periods)	\$400
Facilities - For Ceremony Onsite	\$500

---

### Total Facilities Fees (based on 2 periods of visitation) **\$1,200**

---

### Vehicles

Administration Vehicle	\$100
Transfer Vehicle (for transfer from place of death)	\$100
Funeral Coach	\$400
Transfer Vehicle (for retrieval of cremated remains)	\$100

---

### Total Vehicle Fees **\$700**

---

### Total Price for a Traditional Funeral with Cremation **\$4,700**

---

# Celebration of Life

## Chapel Memorial Service

A Memorial Service takes place after cremation has occurred. You have the option of having the cremated remains present for the service (the cremation process normally requires three business days). For a Memorial Service you will need to select a cremation casket from the “Cremation Casket” section of our [Casket Price List](#). An urn can be selected from the [Urn Price List](#). For a reception at the Funeral Home, catering, flowers and other tribute supplies, please see our “Itemization of Funeral Services” section.

## Professional Services

Consultation & Planning	\$600
Arranging & Co-Ordination of Services	\$525
Documentation	\$200
Transfer Staff	\$400
(From place of death to Funeral Home, from Funeral Home to Crematorium and from Crematorium back to Funeral Home – based on a one attendant transfer)	
Staff for Ceremony Onsite	\$375
<b>Total Professional Services Fees</b>	<b>\$2,100</b>

---

## Facilities

Facilities - Basic	\$100
Facilities - For Sheltering of Remains	\$200
Facilities - For Ceremony Onsite	\$500
<b>Total Facilities Fees (based on 2 periods of visitation)</b>	<b>\$800</b>

---

## Vehicles

Administration Vehicle	\$100
Transfer Vehicle (for transfer from place of death)	\$100
Transfer Vehicle (for transfer to crematorium)	\$100
Transfer Vehicle (for retrieval of cremated remains)	\$100
<b>Total Vehicle Fees</b>	<b>\$400</b>

---

<b>Total Price for a Memorial Service</b>	<b>\$3,300</b>
---	----------------

---



# Graveside Service

A Graveside Service takes place at the cemetery for either a casket burial or interment of cremated remains. For a casket burial you will need to select a casket from the [Casket Price List](#). Depending on the by-laws of the cemetery, you may also need to select an outer burial container from the [Burial Container Price List](#). For the interment of cremated remains, you can select an urn from the [Urn Price List](#). Please note that not all cemeteries inter during the winter months.

## Professional Services

Consultation & Planning	\$600
Arranging & Co-Ordination of Services	\$525
Documentation	\$200
Transfer Staff	\$300
From place of death to Funeral Home (2 attendants)	
from Funeral Home to Graveside (1 attendant)	
Staff for Ceremony Offsite	\$725
<b>Total Professional Services Fees</b>	<b>\$2,350</b>

---

## Facilities

Facilities – For Sheltering of Remains	\$200
<b>Total Facilities Fees</b>	<b>\$200</b>

---

## Vehicles

Administration Vehicle	\$100
Transfer Vehicle (for transfer from place of death)	\$100
Funeral Coach	\$400
<b>Total Vehicle Fees</b>	<b>\$600</b>

---

<b>Total Price for a Graveside Service</b>	<b>\$3,150</b>
--	----------------

---

# Direct Cremation

A Simple Cremation service includes the supervision and co-ordination of the activities necessary to carry out the cremation with no service at the Funeral Home. For a cremation direct disposition, you will have to select a cremation casket from the “Cremation Casket” section of our [Casket Price List](#). An urn can be selected from our [Urn Price List](#). \*\*

## Professional Service

Consultation & Planning (Direct Cremation Only)	\$300
Documentation	\$200
Transfer Staff	\$400
From place of death to Funeral Home, from Funeral Home to Crematorium and from Crematorium back to Funeral Home – based on a one attendant transfer)	

**Total Professional Services Fees** **\$900**

---

## Facilities

Facilities - For Sheltering of Remains \$200

**Total Facilities Fees** **\$200**

---

## Vehicles

Administration Vehicle	\$100
Transfer Vehicle (for transfer from place of death)	\$100
Transfer Vehicle (for transfer to crematorium)	\$100
Transfer Vehicle (for retrieval of cremated remains)	\$100

**Total Vehicle Fees** **\$400**

---

**Price for a Simple Cremation (Before Disbursements)** **\*\*\$1,500**

---

\*\* *Total Simple Cremation package with disbursements (including HST)* **\$2,621.02**

---

# Celebration of Life

## Reception Package

A Celebration of Life Package includes the supervision and co-ordination of the services necessary for a direct disposition (burial or cremation) with the use of our reception room & lounge facilities or visitation room for an informal gathering of family and friends. For a cremation Celebration of Life Service, you will have to select a cremation casket from the “Cremation Containers” section of our [Casket Price List](#). An urn can be selected from our [Urn Price List](#). For a burial Celebration of Life service, you will have to select a casket from our [Casket Price List](#). Depending on the by-laws of the cemetery, you may also need to select a crypt or burial vault from the [Burial Container Price List](#).

### Professional Services

Basic Arrangement Fee	\$600
Co-Ordination / Arranging of Details & Services	\$525
Documentation	\$200
Transfer Staff	\$400
From place of death to Funeral Home, from Funeral Home to Crematorium and from Crematorium back to Funeral Home – based on a one attendant transfer	
Staff for Ceremony	\$200
<b>Total Professional Services Fees</b>	<b>\$1,925</b>

---

### Facilities

Facilities - Basic	\$100
Facilities - For Sheltering of Remains	\$200
Facilities - For Reception	\$800
<b>Total Facilities Fees</b>	<b>\$1,100</b>

---

### Vehicles

Administration Vehicle	\$100
Transfer Vehicle (for transfer from place of death)	\$100
Transfer Vehicle (for transfer to crematorium)	\$100
Transfer Vehicle (for retrieval of cremated remains)	\$100
<b>Total Vehicle Fees</b>	<b>\$400</b>

---

**Total Price for a Celebration of Life Service** **\$3,425**

---

# Itemization of Funeral Home Services

## Professional & Staff Services

### Consultation & Planning \$600

---

Services included, but not limited to: (1) responding to the initial request for service; (2) conducting the arrangement conference; (3) preparation of biographical and statistical data; (4) examination of financial settlement options; (5) preparation and filing of papers, permits and authorizations; (6) coordination with those providing other services; (7) preparation and placement of obituary notices; (8) retention and care of remains prior to commencement of post death activities; (9) overhead expenses relative to our facility and operations, such as occupancy, administrative and equipment costs.

### Arranging & Co-Ordination of Services \$525

---

In addition to the professional services outlined in our general price list, our services may include but are not limited to: 24 hour staff response, 365 days per year to initial requests for services. Coordinating desired service plans with the cemetery, crematory, clergy, veteran and legion organizations, civic organizations, and/or other parties involved in the ceremonies, rituals, transportation and final disposition of the deceased. Preparation of the death notice and obituary, publications on website, arranging flowers, accepting deliveries of flowers and merchandise, clergy record, Canada Pension death benefit and Survivor Pension documentation, airline notifications, co-ordination / purchasing liquor licenses, legal affidavits and any other forms or correspondence requested by the family in addition to Roadhouse & Rose's website and obituary services.

### Documentation – Permits, Forms, etc. \$200

---

Completion and filing of all documents necessary to carry out the services and supplies requested, including, but not limited to, death registration, burial permit, coroner's certificate for cremation, documentation necessary to ship remains out of province. As part of this service, we will provide you with an unlimited supply of Funeral Director's Statements of Death ("Death Certificates").

### Documentation for Shipment of Remains \$(Varies)

---

Certified death certificates will be required by certain organizations and can be applied for through the Government of Ontario. Staff (\$100) and Vehicle (\$100) are required. This process normally takes 2– 14 weeks. If there is an urgent need for certified death certificates, the process will require a Funeral Director to prepare and deliver documentation. The Government charges an expedited fee of \$225. In these expedited situations the certified death certificates are \$52 / each.

---

**Transfer Remains** \$100

---

Transportation of the remains from one location to another, for example from the place of death to the funeral home, or from the funeral home to the cemetery or crematorium, using a Transfer/Service Vehicle, for distances not exceeding 25 km. A charge of \$1.95 per km will apply for round trip distances greater than 25 km. This cost is based on a one attendant transfer. For transfers from residences or institutions which require two attendants, an additional \$100 will be charged for the 2<sup>nd</sup> attendant.

---

**Basic Preparation of Remains** \$150

---

The preparation of remains for placement into the casket, including bathing, dressing and the setting of facial features for identification or viewing without embalming. This process may take up to 1 hour. Please note that this is a linked service and requires the use of Facilities for Preparation/Sheltering of Remains (see Facilities).

---

**Embalming / Post Mortem / Special Care (\*\*See Below)** \$400

---

Embalming is a 4 hour process of sanitation, restoration and temporary preservation of remains. Embalming is not legally required, but is recommended to preserve remains between the time of death and the visitation or disposition of the deceased. Please note that this is a linked service and requires the use of Facilities for Preparation/Sheltering of Remains (see Facilities). \*\*NOTE - In certain cases additional restorative work may be required. In these cases an additional charge of \$100 per hour applies. Post Mortem embalming is \$650.

---

**Removal and Disposal of Pacemaker** \$50

---

Must be removed for cremation services.

---

**Staff Services for Visitation** \$200

---

Staff to coordinate and oversee the visitation period at our premises for a period of up to 2 hours.

---

**Staff Services for Ceremony – Onsite** \$375

---

Staff to coordinate and oversee the ceremony (funeral service, memorial service, celebration of life) at the Funeral Home.

---

**Staff Services for Ceremony – Offsite (Casket Present for Service)** \$725

---

Staff to coordinate and oversee the funeral service outside the Funeral Home (at a church, hall, etc.)

---

**Staff Services for Ceremony – Offsite (Urn Present for Service)** \$525

---

Staff to coordinate and oversee the memorial service/celebration of life outside the Funeral Home (at a church, hall, etc.)

---

**Staff Services / Licensed SmartServe for Reception** \$200/ Hr

---

Staff to coordinate and oversee the reception.

**Staff Services – Pallbearer** \$100

Each staff member required to assist with carrying casket at funeral home, place of service and / or at place of interment, charged at a flat rate.

---

**Facility Charges**

**Facilities – Basic** \$100

Use of our general and common areas, parking lot, public washrooms, cloak rooms, heating, lighting and maintenance.

**Facilities – Preparation / Sheltering of Remains** \$200

Facilities to prepare, embalm and/or shelter the remains. This charge applies whenever the deceased is in our care.

**Last Remembrance** \$375

Designated facilities used for a final viewing for a maximum of 30 minutes charged at a flat rate. This service is a private family time for reflection and a maximum of 12 people is advised. Please note that a Cremation Casket is required and minimal preparation or embalming is required.

**Facilities – Visitation** \$200

Designated facilities used for visitation for a maximum of 2 hours, charged at a flat rate. Please note that this is a linked service and requires the use of Staff Services for Visitation.

**Facilities – Ceremony** \$500

Designated facilities at our Funeral Home used for the ceremony (funeral, memorial service, etc.). Please note that this is a linked service and requires the use of Staff Services for Ceremony.

**Facilities – Reception** \$800

Use of facilities for a reception following the ceremony. Please note that this is a linked service and requires the use of Staff Services for reception. If wine or beer is desired, please add a disbursed payment of \$50 to the LCBO for a permit.

## Vehicle Charges

---

<b>Funeral Coach</b>	<b>\$400</b>
----------------------	--------------

---

Use of the Funeral Coach (Hearse) to transport remains from the Funeral Home to cemetery, mausoleum or crematorium. 3 hour maximum.

---

<b>Lead / Clergy Vehicle</b>	<b>\$200</b>
------------------------------	--------------

---

Use of the sedan for leading a funeral procession and/or providing transportation for additional funeral staff or clergy, from the Funeral Home to the cemetery, mausoleum or crematorium.

---

<b>Limousine</b>	<b>\$800</b>
------------------	--------------

---

Use of a limousine for a 3 hour period of service (7 passenger). This vehicle can be used for transporting family members and/or pall bearers to the cemetery, mausoleum or crematorium. It can also be used for picking up and dropping off family members at their residence. For periods exceeding 3 hours an additional \$100 / Hr surcharge will apply.

---

<b>Administrative Vehicle</b>	<b>\$100</b>
-------------------------------	--------------

---

Use of an administrative vehicle for the local procurement of documents (registration of death, picking up burial permits, cremation or coroner's paperwork, etc.).

---

<b>Service Vehicle</b>	<b>\$100</b>
------------------------	--------------

---

Additional vehicles for transferring staff, flowers, etc.

---

<b>Transfer Vehicle (for transfer from Place of death)</b>	<b>\$100</b>
--	--------------

---

Use of a service vehicle and specialized equipment to transfer the deceased from the place of death to the Funeral Home.

---

<b>Transfer Vehicle (Transfer to Cemetery or Crematorium)</b>	<b>\$100</b>
---	--------------

---

Use of a service vehicle to transfer the deceased from the Funeral Home to the cemetery/crematorium.

---

<b>Transfer Vehicle (Retrieval of cremated remains Crematorium)</b>	<b>\$100</b>
---	--------------

---

Use of a service vehicle to retrieve the cremated remains from the crematorium and bring them back to the Funeral Home.

# Additional Items & Considerations

Classic Stationery Package

\$325

- Guest Registry Book With Picture
- 50 Thank You Cards
- 100 Double Sided Memorial Cards or Folders
- Digital Video Tribute (up to 100 photos)
- Presentation Case



**Register Book - without Picture**

\$60

**Personalized Register Book - with Picture**

\$75

**\* Individual Memorial Folders or Prayer Cards**

\$1 - \$1.50 / Per

\* Note: A Stationery Setup Fee of of \$50 / per order applies for individual orders.

**USB with Copy of Service Recording**

\$45

USB (\$15) with copy of Service Recording (\$30)

**Round Memorial Candle / 4 Sided Memorial Candle**

\$19.95 / \$40

Round Memorial Tribute Candle \$19.95 or 4 Sided Memorial Candle \$40  
Personalized with a picture of your loved one

**Live Stream Service Recording**

\$150

On-line live streaming for friends and family to view the service of your loved one.

**Digital Video Tribute (Up to 100 Photographs)**

\$150

**Additional Photographs (Over 100 photos) for Video Tribute**

\$1 / Per

Each photograph request to add to Video Tribute - Editing Fee

**Coffee / Tea Tray**

\$150

Coffee and Tea refreshment cart for visitation period



**Storage of Remains (after one week – refrigerated storage – per day) \$25.00**

---

This service may be necessary in certain cases where cemeteries do not perform winter interments.

**Hazardous Precautions - Personal Protection Kits \$259.00**

---

These kits may be needed in circumstances requiring staff to use additional protection from infectious diseases

**1. Personal Protection Kits \$200.00**

**2. Double Pouch for deceased \$59.00**

**Casket Lowering Device / Grave Dressing \$530.00**

---

This casket lowering device is required if an outer vault has not been purchased. It is used to assist in lowering a casket into a grave.

## Disbursements

---

The Purchaser acknowledges and agrees that the Funeral Home will be acting on behalf of, and only as agent for, the Purchaser in paying the disbursements to a third party supplier. The Purchaser acknowledges that unless other arrangements are made with the Funeral Home, the Purchaser will be liable to pay the supplier directly for the supplies or services and agrees to save the Funeral Home harmless from any claims by the third party supplier for payment. Please note all prices are estimations and subject to change.

**Documentation and Shipment of Remains Outside (Canada Prices Vary)**

---

Shipping requirements are determined by the embassy of the country in which remains are to be transferred to. For requirements and costs associated with the shipment of a deceased person to another country, or the shipment of cremated remains to another country, please inquire, and through our sub-contracted agents we can obtain a list of requirements and costs.

**Clergy/Celebrant Honorarium \$250 – \$500**

Your funeral director will organize a Clergy/Celebrant on your behalf. The individual will contact you to discuss details to personalize the service for your loved one. A Honourarium can be paid by the funeral home or by the family directly.

**Organist Honorarium \$150 – \$250**

---

Hymns can be incorporated into the service to honour your loved one.

**Coroners Cremation Certificate (required for cremation) \$75**

---

# Disbursements

The Purchaser acknowledges and agrees that the Funeral Home will be acting on behalf of, and only as agent for, the Purchaser in paying the disbursements to a third party supplier. The Purchaser acknowledges that unless other arrangements are made with the Funeral Home, the Purchaser will be liable to pay the supplier directly for the supplies or services and agrees to save the Funeral Home harmless from any claims by the third party supplier for payment. Please note all prices are estimations and subject to change.

**Municipal Death Registration Fee (required)** \$30

---

**Newspaper Notice** *(Cost depends on length of notice)*

---

A funeral director can assist you with composing a notice to be placed in the publication of your choice.

**Cemetery Interment Fee** *(All cemetery charges must be paid directly to cemetery)*

---

**Cremation Fee Varies** From \$550 - \$700

---

Price List for the Crematorium is available upon request. Fees are paid directly to the crematorium at the time of need.

**Flowers**

---

Floral tributes can be purchased directly through the Funeral Home or you may wish to contact a local florist directly.

**Police Escort** Est \$1,500 - \$3000

---

Cost depends on the number of cars in the procession and the distance travelled. Please ask for more information.

**Bag Piper** \$300 - \$450

---

Bagpipe music can be organized through the funeral home. An additional fee will apply if attendance is required at both ceremony and cemetery.

**Soloist** Est. \$200

---

A soloist can be arranged by the funeral home. Funeral services held at a church may have a soloist on staff. Cost may vary depending on the church selected.

**Vials for Cremated Remains** \$1 / Vial

---

Individual vials with cremated remains used for keepsakes, jewellery or scattering.

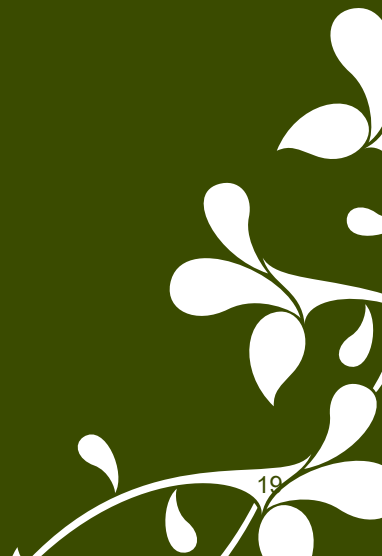
**Possession of Cremated Remains** \$350

---

A refundable deposit of \$350 may be charged if the Cremated Remains are not claimed within 1 month. If the cremated remains are not claimed by the Purchaser within 1 year, the Funeral Home reserves the right to inter the Cremated Remains in common ground using the deposit.



# Merchandise



# Wooden Caskets

Suitable for cremation.

All caskets are made in 

Adult size casket dimensions average  
80" long x 27" wide x 20" deep

## The Fergus

\$1,995 \*\*



- Solid Poplar Adult Standard Shell
- Veneer Poplar Components
- Constructed from 1" Stock Timber and 5/8" Material
- Beige Crepe Interior
- Fixed Wood Bar Carriers
- Rustic Brown Satin Finish

\*\* Also Available

The Carter # 228N \$1,995  
Natural Stain by Northern Casket

Victoriaville Caskets Ltd #52-417-103

## The Carter

\$2,395



- Solid Poplar Adult Standard Shell
- Dark Walnut Finish
- Rosetan Crepe Interior
- Polished metal handles & hardware
- Available in "Oversize" for an additional \$200

Northern Casket #228 DW

## The Winfield

\$2,495



- Solid Poplar Adult Standard Shell
- Poplar Veneer Components
- Constructed from 1" Stock Timber and 5/8" Material
- Low Lustre Cherrywood Satin Exterior Finish
- Trimmed Tan Crepe Interior
- Wood Swing Bar Carriers
- Commemorative Record System

Victoriaville Caskets Ltd.#52-5430-20

The Titan

\$2,695



- Quality Poplar and Veneer Components
- Shaded Light Titian Satin Finish
- Beige Crepe Interior
- Antique Gold Tone Swing Bar Hardware
- Wood Bar Carriers

Victoriaville Caskets Ltd #52-682-00

The Digby

\$2,795



- Solid Ash Adult Standard Shell
- Ash Veneer Components
- Constructed from 1" Stock Timber and 5/8" Material
- Glossy Saffron Exterior Finish
- Trimmed Beige Crepe Interior
- Wood Swing Bar Carriers

Victoriaville Caskets Ltd. #32-62-12

The Rose Arbour

\$2,995



- Solid Cottonwood Octagon Ladies Casket
- Medium Mahogany Finish
- Trimmed Beige Interior with Rose Inset

Northern Casket. #500M

The Trentfield

\$3,495



- Solid Poplar Adult Standard Shell
- Poplar Veneer Components
- Constructed from 1" Stock Timber and 5/8" Material
- Hand Polished Earth Tone Exterior Finish
- Interchangeable Keepsake Corners
- Trimmed Tan Crepe Interior
- Commemorative Record System

Victoriaville Caskets Ltd #52-5450-295

The Fairholme

\$3,595



- Solid Appalachian Red Oak Adult Standard Shell
- Constructed from 1" Stock Timber
- Unique Petite Octagon End Design
- Hand Polished Shaded Saffron Finish
- Trimmed Dusty Pink Crepe Interior
- Wood Swing Bar Carriers
- Commemorative Record System

Victoriaville Caskets Ltd. #10-700-30

The Homeward

\$3,695



- Solid Poplar Adult Standard Shell
- Poplar Veneer Components
- Constructed from 1" Stock Timber and 5/8" Material
- Interchangeable Keepsake Corners
- Hand Polished Titian Exterior Finish
- Trimmed Tan Crepe Interior
- Wood Swing Bar Carriers
- Commemorative Record System

Victoriaville Caskets Ltd. #52-410-00

The Simcoe

\$4,595



- Solid Appalachian Red Oak Construction Adult Standard Shell
- Hand Polished Topaz Polished Exterior Finish
- Interchangeable Keepsake Corners
- Trimmed Tan Crepe Interior
- Wood Swing Bar Carriers
- Commemorative Record System

Victoriaville Caskets Ltd. #10-5740-11

The Wabash

\$4,895



- Solid Wild Cherry Adult Standard Shell
- Hand-Polished Garnet Exterior Finish
- Beige Velvet Crepe Interior
- Wood Swing Bar Carriers
- Interchangeable Keepsake Corners
- Commemorative Record System

Victoriaville Caskets Ltd. #05-5550-01

The Briar Hill

\$4,995



- Quality Solid Bird's Eye Maple Adult Standard Shell
- Hand Polished Autumn Haze Exterior Finish
- Champagne Linen Interior
- Wood Swing Bar Carriers
- Corinthian Corners
- Commemorative Record System

Victoriaville Caskets Ltd. #25-833-00

The Bennington

\$5,495



- Solid Appalachian Red Oak Adult Standard Shell
- Lustrous Shaded Persian Fawn
- Satin Exterior
- Ivory Velvet Interior
- Elegant Rounded End Shell Design
- Rounded Wood Bar Carriers
- Commemorative Record System

Victoriaville Caskets Ltd. #10-501-01

The Parliament

\$7,995



- Solid Oak Adult Standard Shell
- Constructed from 1" and 2" Stock Timber
- Persian Fawn Polished Exterior Finish
- Trimmed Beige Velvet Interior
- Wood Swing Bar Carriers
- Commemorative Record System

Victoriaville Caskets Ltd. #10-9600-00

The Bordeaux

\$8,995



- Solid Wild Black Cherry Adult Standard Shell
- Constructed from 1" and 2" Stock Timber
- Hand Crafted Titian Exterior Finish
- Trimmed Beige Velvet Interior
- Wood Swing Bar Carriers
- Commemorative Record System

Victoriaville Caskets Ltd. #05-9600-00



# Cremation Rental Caskets

Cremation rental caskets are available in a wide variety of styles and prices and are suitable for a Traditional Funeral Service and visitation prior to cremation taking place. This option is environmentally-sound as the shell casket is rented and the modest cremation casket is what is cremated.

---



## Last Remembrance Chaise



Chaise Viewer and Insert Combo (available separately)

**Chaise Rental**

**\$395**

---

Rental Insert - Sold separately # IC-1 Innisvale Cremation

**\$150**

This supply is available for use with the Last Remembrance visitation only.

# Cremation Rental Caskets

Cremation rental caskets are available in a wide variety of styles and prices and are suitable for a Traditional Funeral Service and visitation prior to cremation taking place. This option is environmentally-sound as the shell casket is rented and the modest cremation casket is what is cremated.

## The Ceremonial Durham Casket

\$1,095



- Poplar Veneer Construction
- White Taffeta Interior/ Fibreboard Insert

*Please note price includes rental of casket and purchase of alternate fibreboard cremation container*

Northern Casket Ltd. #504D

## The Ceremonial Frontenac Casket

\$1,550



- 100% Ontario Solid Poplar
- Northern Walnut Spray Stain
- Trimmed Rose Tan Crepe Interior
- Wood Handles / Easy Slide Locks

*Please note price includes rental of casket and purchase of alternate fibreboard cremation container*

Northern Casket Ltd. #18

## The Ceremonial Acropolis Casket

\$1,750



- 100% Canadian Solid Oak
- Diamond Coat Super Gloss
- Eggshell Linen interior
- Wood Handles / Easy Slide Locks

*Please note price includes rental of casket and purchase of a premium alternate fibreboard cremation container*

Northern Casket Ltd. # 958

# Cloth Covered Caskets

Cloth covered caskets are made from corrugated fiberboard, pressed wood or softwoods, which are then covered with cloth and contain finished interiors. As a result of the construction methods and materials used in their manufacturing process, cloth covered caskets are modestly priced and offer an economical choice for families. (Suitable for cremation)

## The Hampton

\$895



- MDF Adult Standard Shell
- Constructed of 5/8" Material
- Embossed Patterned Grey Cloth Covered Exterior
- Swing Bar Carriers
- White Crepe Interior

Northern Casket Ltd. #504D

## The Toledo

\$1,095



- MDF Adult Standard Shell
- Constructed of 5/8" Material
- Blue Cloth Covered Exterior
- Swing Bar Carriers
- White Crepe Interior

Victoriaville Caskets Ltd. # 90-901-92

## The Winston

\$1,295



- MDF Adult Standard Shell
- Constructed of 5/8" Material
- Embossed Patterned Grey Cloth Covered Exterior
- White Crepe Interior
- Swing Bar Carriers

Victoriaville Caskets Ltd. #90-452-01

# Cremation Caskets

Cremation caskets are environmentally sound options for those considering a Memorial Service, Celebration of Life or Direct Cremation service.

The Innisvale Cremation Container \*\*

\$150



- Regular Size
- No interior or pillow
- Alternate fibreboard construction
- Wood base provides extra support

Innisvale Cremation # IC-2

The Innisvale Cremation Container Medium / Plus Size \*\*

\$250



- Oversize Cremation Container
- Similar to above but for "Plus Size"

Innisvale Cremation # IC-2

The Glendale

\$795



- Select Wood Adult Standard Shell with No Carriers
- Fabricated from 5/8" Material
- Kapok Veneer Natural Exterior with White Rayon Interior
- Suitable for Private Family Reflection

Victoriaville Caskets Ltd. #80-5070-90

The Diamond

\$1,595



- Solid Poplar Adult Standard Shell
- Fabricated from 1" Stock Timber
- Natural Exterior with White Rayon Interior
- Wood Bar Carriers
- Suitable for Private Family Reflection

Victoriaville Caskets Ltd.#50-479-01

# Outer Burial Containers

## Casket Vaults

All outer burial containers are 86" long x 30" wide and 26" deep, unless specially ordered.

### "The Crypt" - Concrete Vault

\$1,195



Concrete Crypts serve the purpose of protecting the contents of the grave by providing an unsealed barrier between it and the corrosive elements of the soil. The reinforced concrete crypt provides the function of basic protection and security for the grave.

Baker Vaults #00-1

### "The Standard" - Concrete Vault

\$1,395



Constructed of high density concrete with 12 gauge welded reinforcing, steel reinforced domed cover, tongue and groove construction (sealed with fibergum plastic cement), personalized nameplate with wreath or crucifix, painted gold in colour.

Baker Vaults #00-2

### "The Oxford" - Concrete Lined Vault

\$1,695



Baker's reinforced concrete and Trigard's polymer vinyl liner are chemically bonded to provide maximum protection from the elements of the grave. The tongue and groove structure of the lid combined with Trigard's butyl tape provides a secure and immediate waterproof seal. The exterior is painted gold with a personal nameplate and emblem.

Baker Vaults #00-3

**"The Tremont" (Church Window) - Concrete Lined Vault**

**\$2,495**

(Also available as flat marble without window design)



A white marble polymer Trigard liner is chemically bonded to reinforced concrete. This not only provides maximum protection from all the elements but also gives a classic sophisticated look. The tongue and groove structure of the lid combined with Trigard's butyl tape provides a secure and immediate waterproof seal. The lid features a raised white marble church window design with nameplate.

Baker Vaults #00-4

**"The Aegean" (White Marble)**

**\$2,995**



Baker's reinforced concrete as a core is chemically bonded to the inner and outer layers of Trigard's white marble polymer liner providing the ultimate protection from all of the grave's elements. The tongue and groove structure of the lid combined with Trigard's butyl tape provides a secure and immediate waterproof seal. The unique design of the dome shaped lid provides ultimate strength and is completed with a personalized name and emblem.

Baker Vaults #00-5

**"The Concorde" (Stainless Steel)**

**\$3,695**



Trigard's handcrafted stainless steel bonded to their polymer liner, chemically bonded to Baker's reinforced concrete provides maximum protection from all of the grave's elements. The tongue and groove structure of the lid combined with Trigard's butyl tape provides a secure and immediate waterproof seal. The unique exterior is painted silver and highlighted with black. The polished stainless steel along with a personalized name and emblem gives an extremely modern eye catching appeal at one's gravesite.

Baker Vaults #00-6

**"The Caroline" (Stainless Steel)**

**\$3,695**



Trigard's handcrafted stainless steel bonded to their polymer liner, chemically bonded to Baker's reinforced concrete provides maximum protection from all of the grave's elements. The tongue and groove structure of the lid combined with Trigard's butyl tape provides a secure and immediate waterproof seal. The unique exterior is painted white and highlighted with pink. The polished stainless steel along with a personalized name and emblem gives an elegant eye appeal at one's gravesite.

Baker Vaults #00-7

**"The Williamsburg" (Copper / Steel)**

**\$4,495**



Trigard's handcrafted copper bonded to their polymer liner is chemically bonded to Baker's reinforced concrete provides maximum protection from all of the grave's elements. The tongue and groove structure of the lid combined with Trigard's butyl tape provides a secure and immediate waterproof seal. The unique exterior is painted copper and highlighted with black. The polished copper along with a personalized name and emblem gives a radiant appeal at one's gravesite.

Baker Vaults #00-8

# Urns

☞ Certain Urns can be engraved (additional \$45 - \$110)

## Wood Urns



**Windsor Chest** \$583

---

Oak with Yorkshire Gloss  
 10 ¼" L x 8 ¼" W x 6 ½" H  
 Victoriaville US105-20002



**Original Shaded Saffron** \$365

---

Solid Ash (Available in Oak)  
 7 ½" L x 10 ½" W x 6" H  
 Victoriaville US130-00274



**Rosewood - Suitable for Columbarium** \$250

---

Wood 9½ L x 6 ¼" W x 5 ¼" H  
 Victoriaville US899-30034



**Oak Jewel Box** \$425

---

Solid Oak (Available in Titian Stain or Fawn Finish)  
 8" L x 11" W x 5 ¼" H  
 Victoriaville US110-00253



**Basic Wood Urn - Suitable for Columbarium** \$250

---

Veneer (Light Cherry Stain)  
 8 15/16" W x 6 7/16" L x 5" H  
 Victoriaville US199-20006



**Courage Two Tone Chest Urn** \$495

---

Two-tone high gloss finished chest with curved sides.  
 High gloss walnut finished top and base.  
 High gloss black finished sides. Brass finish lock and key.  
 8.25 " L x 10.5 " W x 6.25 " H North Urn 800-191



# Wood Urns



Allen - Available as a Companion Urn \$425

---

Solid Maple Companion Urn \$795  
 13 5/8" L x 8 5/8" W x 7 5/16" H  
 Victoriaville US120-00003



Grey Wood - Suitable for Columbarium \$95

---

Grey Wood Veneer  
 8 3/4" W x 6" L x 5" H  
 Victoriaville US199-20007



Avalon - Suitable for Columbarium \$250

---

Bamboo (Natural Stain)  
 8 15/16" W x 6 7/16" L x 5" H  
 Victoriaville US199-20011



Verona White - Suitable for Columbarium \$395

---

Wood Veneer  
 Available as Keepsake \$95  
 Also available in Black or Walnut Colour  
 5 1/2" L x 5 1/2" W x 11.1" H  
 Victoriaville US110-00092

# Sheet Bronze Urn



Cherry Floral - Suitable for Columbarium \$275

---

Brass Sheet with Wood, Permalock  
 5 5/8" W x 6 1/8" L x 7" H  
 Victoriaville US235-20010

## Cloisonné Urns



### Opal

\$495

Available as a Keepsake \$100  
 Heart Shaped Keepsake \$169.95  
 7" diameter x 11" H

Victoriaville US450-00003



### Autumn Leaves

\$495

Available as a Keepsake \$100  
 Heart Shaped Keepsake \$169.95  
 7" diameter x 11" H

Victoriaville US450-00004



### Butterfly Garden

\$495

Available as a Keepsake \$100

8" diameter x 10 <sup>7</sup>/<sub>8</sub>" H

Victoriaville US450-00001

## Biodegradable Urns

### Scattering Tube Urn

\$119



Constructed from biodegradable card stock.

Available in multiple designs including Rainbow, Dove and Sunset.

5" diameter x 12 <sup>9</sup>/<sub>16</sub>" H

Victoriaville UK830



### Unity Earth Urn

\$289

Constructed from biodegradable paper.

8" L x 6 <sup>1</sup>/<sub>2</sub>" W x 5" H

Victoriaville US899-00003



### Bios Urn

\$195

Constructed from biodegradable cardstock. Each Bios Urn is provided with seeds of your choice (Maple, Honey Locust, Pine, Redwood, Tree of Life or Oak.)

6.3" x 6.3" X 13" H

Bios #B1

## Brass / Metal Urns



**Milano Floral** \$395

---

Available as a Keepsake \$95  
 7" diameter x 11 1/8" H  
 Victoriaville US210-00012



**Golden Antique** \$395

---

Available as a keepsake \$95  
 Brass Etched Design  
 5 1/2" diameter x 10 3/4" H  
 Victoriaville US840-30020



**Radiance** \$395

---

Available as a Keepsake \$95  
 Heart Shaped Keepsake \$110  
 Brass Etched Design  
 6 1/2" diameter x 10 1/4" H  
 Victoriaville US840-30003



**Back Home** \$395

---

Available as a keepsake \$95  
 Etched Bird Design  
 6" diameter x 10 1/8" H  
 Victoriaville US210-30017



**Antique** \$395

---

Available as a keepsake \$95  
 5 1/2" diameter x 10 3/4" H  
 Victoriaville US840-00010

## Brass / Metal Urns



### Elegant Pearl White \$395

Available as a Keepsake \$95  
 Heart Shaped Keepsake \$110  
 7" diameter x 10 5/8" H

Victoriaville US210-30048



### Elite Starlight \$395

Available as a Keepsake \$95  
 Heart Shaped Keepsake \$110

(Available in Bronze, Sage Colour)

6 3/4" diameter x 10 1/4" H

Victoriaville US430-35201



### Aria Wheat \$495

Available as a Keepsake \$99.95  
 Heart Shaped Keepsake with stand \$129.95

6 1/2" diameter x 9 1/2" H

Victoriaville US440-00450



### Aria Tree of Life \$495

Available as a Keepsake \$99.95  
 Heart Shaped Keepsake with stand \$129.95  
 Brass Etched Design (Available in Rose with Gold Floral Trim)  
 7" diameter x 11 1/8" H

Victoriaville US440-00451



### Aria Ascending \$495

Available as a Keepsake \$99.95  
 Heart Shaped Keepsake with stand \$129.95  
 6 1/2" diameter x 9 1/2" H

Victoriaville US440-00449

# Cremation Jewellery

All Jewellery

\$129.95



**Heart with Stones**

J-1050



**Maple Leaf**

J-1230



**Angel**

J-1200



**Teddy Bear**

J-1170



**Butterfly**

J-1190



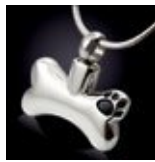
**Bullet**

J-1210



**Cat**

J-1180



**Bone with Paw Print**

J-1150



**Black Gem**

J-1100



**Tear Drop**

J-1020



**Men's Cylinder Cross**

J-1060



**Key To My Heart**

J-1140

# Cremation Jewellery

All Jewellery

\$129.95



**Square Black Jem**

J-1070



**Footprints on the Heart**

J-1130

Jewellery engraving available for \$35

Please ask us about additional pendant options (Hummingbird, Treble Clef, Celtic Cross, Dolphin, etc.)

All pendants are made from Stainless Steel and include a 20" chain.





**Roadhouse & Rose  
Funeral Home**  
*Playter Chapel*

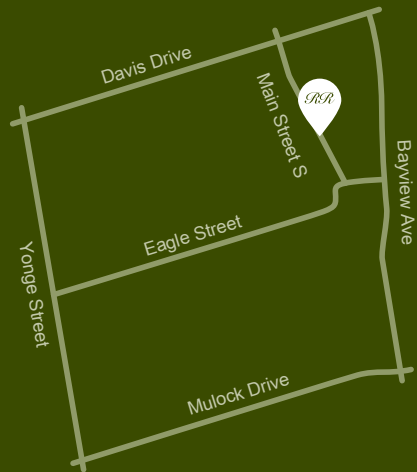
157 Main Street South,  
Newmarket, Ontario L3Y 3Y9

T: 905.895.6631

F: 905.895.4747

E: [info@roadhouseandrose.com](mailto:info@roadhouseandrose.com)

[www.roadhouseandrose.com](http://www.roadhouseandrose.com)



*As with all that we do, we provide our families with an open door policy. Please feel free to contact us at any time. We are available 24 hours a day to take your call.*

### Hours of Operation

Monday to Friday  
9 am to 5 pm

Saturday and Sunday  
9 am to 5 pm