



SOLUTIONS FOR CONSERVATION  
AREAS & LISTED BUILDINGS

THE  
**R**ESIDENCE  
COLLECTION



## *Authentic Timber Alternative*



### *The Residence Collection & Sustainability*

As a company we are putting sustainability at the forefront of our business, our Head Office has achieved a zero-landfill mark, we're well on our way to making company vehicles electric and achieve our target to become carbon neutral. All uPVC windows and doors can be fully recycled up to 10 times and included within The Residence Collection window and door is a 100% recycled material section. The Residence Collection windows and doors can also contribute to lower energy bills and carbon emissions due to their outstanding thermal performance and low u-values.

# Heritage Design for 21<sup>st</sup> Century Living

The design brief for The Residence Collection was to extract the key principles, shapes and dimensions from Article 4 directions for windows, and integrate market leading technology into the design using virtually maintenance free materials; your windows and doors won't warp, swell, flake or need sanding and painting, ever! The Residence Collection offers a suite of thermally and acoustically superior window and door systems, featuring the latest security, maintenance and performance innovations, whilst still appearing traditional. A beautiful addition to your home.

## WHAT ARE ARTICLE 4 DIRECTIONS & DO THEY APPLY TO MY HOME?

Article 4 directions are made by the local planning authority, and this can affect you when installing windows in your home. They restrict the scope of permitted development rights, either in relation to a particular area or site, or a particular type of development anywhere in the authority's area. Article 4 directions are used to control works that could threaten the character and architectural merit of an area or building of acknowledged importance. This means that new windows and doors *may* need planning permission. Windows are the defining feature and focal point of any building and the type of window installed can improve or completely ruin the look of a building, which is important in conservation areas or listed buildings.

## WHAT IS A CONSERVATION AREA?

An area "of special architectural or historic interest, the character or appearance of which it is desirable to preserve or enhance". Many of our towns, villages and cities rely on correctly specified windows for much of their architectural impact and character. Inappropriate, poor quality replacement windows can easily erode traditional features on historic buildings.

## WHAT IS A LISTED BUILDING?

Listing is not a preservation order, preventing change. It does not freeze a building in time, it simply means that listed building consent must be applied for in order to make any changes to that building, which might affect its special interest. It's there to protect the aesthetic of that building.

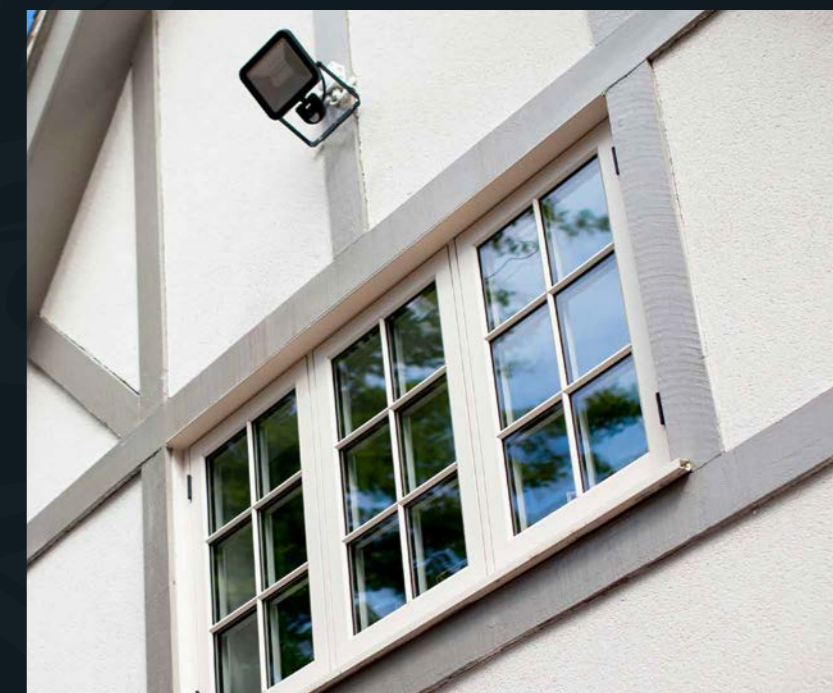
## HOW DOES THE RESIDENCE COLLECTION FIT INTO THIS?

A more modern approach has been for planning authorities to approve the use of The Residence Collection in conservation areas because of its authentic design. It has been specifically designed to aesthetically replicate the documented historical window designs from the 19<sup>th</sup> Century period (read on in the brochure to see proof of this!) and therefore has been approved for use in many areas across the UK. The Residence Collection has also been fitted in some listed buildings, however the local authority uses listed building consent to make decisions that balance the site's historic significance against other issues, such as its function, condition or viability. With listed building consent it is not always just about the aesthetic, it can sometimes be about the material choices too.

Please note, you should always obtain planning permission from the Local Planning Authority before commencing work.



*“The use of modern material should be accepted provided that the window is of design, dimensions, detailing and opening mechanisms are similar to the original window.”*





*Did You Know?  
Around 2.2% of  
England is made up of  
Conservation Areas -  
That's an area larger  
than Luxembourg!\**

\*Source <https://historicengland.org.uk>

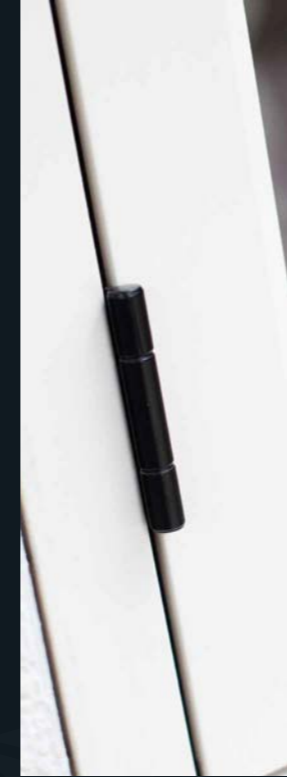
*Clotted Cream*  
Afternoon tea wouldn't be complete without it! Clotted Cream is a pretty, traditional colour, which creates delightfully inviting homes with a gentle warmth.

*R9*

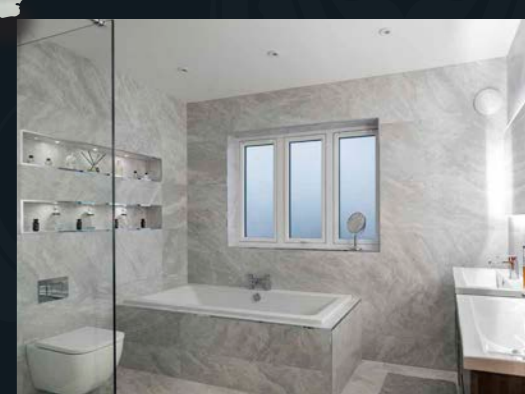


*“We wanted performance and style, but our property also comes under a Conservation Area so it was vital that we adhered to the council regulations. R9 was the perfect choice for us.”*

*R9*



*Painswick*  
Named in honour of the historic wool town set in the Cotswold Hills, with a nod to the traditional era of Downton Abbey! The modest grey green of Painswick has become one of our most popular finishes in recent years. This rather indeterminate colour brings a softness to homes.





“ The look of Residence 9 windows perfectly replicated traditional manufacturing methods as an alternative to timber ”



|                      |   |
|----------------------|---|
| Windows              | Residence 9   |
| Location             | Lyme Park   |
| Manufacturing Method | Mechanical joints on sash and frame   |
| Configuration        | Casement windows, with a mixture of opening and dummy sashes. All with horizontal Georgian bar to replicate previous windows. |
| Colour               | External: Clotted Cream<br>Internal: Grained White  |
| Glazing              | 28mm decorative bead  |

*External*  
Clotted Cream  
Nearest Ral: 9001

*Internal*  
Grained White  
Nearest Ral: 9003



SCAN THE QR CODE TO WATCH THE FULL VIDEO

scan me!

# Preserve Kerbside Appearance



If you are looking for kerbside appeal, look no further. The flush sash exterior is timeless and a true recreation of traditional 19<sup>th</sup> Century timber windows and doors. This is achieved by mirroring the sizes historically documented and as listed in Article 4 directions. Furthermore, all the glass sightlines are perfectly equal providing symmetry and style. The internal shape and depth is completely authentic and gives an elegant and distinctively deep appearance.

## CASE STUDY: SCARBOROUGH COLLEGE

This beautiful 14-acre site in the seaside town of Scarborough has been committed to the highest standards of education for over 100 years for children aged 3 - 18.

Specified for its authentic timber aesthetic, R9 in our classic colour choice Grained White was the perfect fit for this Grade II listed building.

Residence 9 is the ultimate timber alternative system, also achieving one of the highest classifications of British Standard weather tests due to its robust design and market leading thermal and acoustic values, far surpassing the British Building Regulation requirements. The result is a heritage building restored to the highest standards, not only sympathetic to its rich history, but with unbeatable performance too.

- Class 4 Air Permeability; Class E900 Water Tightness; Class B5 3000Pa Exposure
- Recycled sections for enhanced screw retention and galvanised steel sections optimised for strength
- 44mm glazing can achieve up to A++ or 0.74 W/m<sup>2</sup>K and 28mm glazing can achieve up to A or 1.2 W/m<sup>2</sup>K



|                             |  |
|-----------------------------|--|
| <b>Windows</b>              | Residence 9  |
| <b>Location</b>             | Scarborough  |
| <b>Manufacturing Method</b> | Mechanical joints on sash and frame  |
| <b>Configuration</b>        | Open out French windows featuring horizontal Georgian bars. Finished internally with black monkey tail hardware. |
| <b>Colour</b>               | External: Grained White<br>Internal: Grained White   |
| <b>Glazing</b>              | 28mm decorative bead   |

*External*  
Grained White  
Nearest Ral: 9003

*Internal*  
Grained White  
Nearest Ral: 9003



R9

SCAN TO VIEW LISTED BUILDINGS INSTALLATIONS



# Genuine Heritage Design

19<sup>th</sup> Century timber windows were hand crafted and in order to truly replicate the features of this window style, The Residence Collection combines modern machining processes with the eye of a craftsman. A range of authentic styles and configurations, allows you to recreate and preserve traditional details, redefining modern windows and doors.

## TRADITIONAL SIGHTLINES

Flush sash authentically replicates 19<sup>th</sup> Century timber window and door aesthetics, maintaining equal sightlines.

## GEORGIAN BAR

The Residence Collection has bespoke sections that typically replicate deep decorative detailing inside and the chamfered putty line outside. With the Georgian bar you can recreate the pattern of the original windows to preserve your home's character or add new personality with the flair of designing your own patterns.

## TRADITIONAL HARDWARE

Inspired by the appearance of 19<sup>th</sup> Century ironmongery, the Regal handles and stays enable you to replace your windows without losing the character of your home. Available in a range of nine exclusive finishes, our handles come with the added security benefit of key locking and working or dummy matching stays are available. Complete the authentic look with black or white butt hinges, these can be traditionally working or dummy for use with modern hinges.

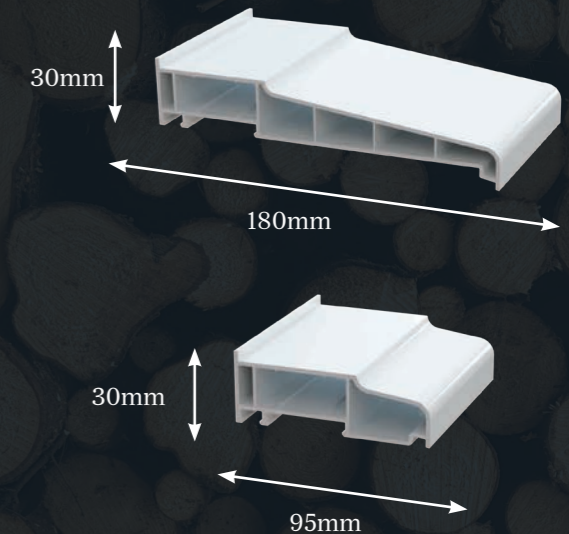


## AUTHENTIC CILL DETAIL

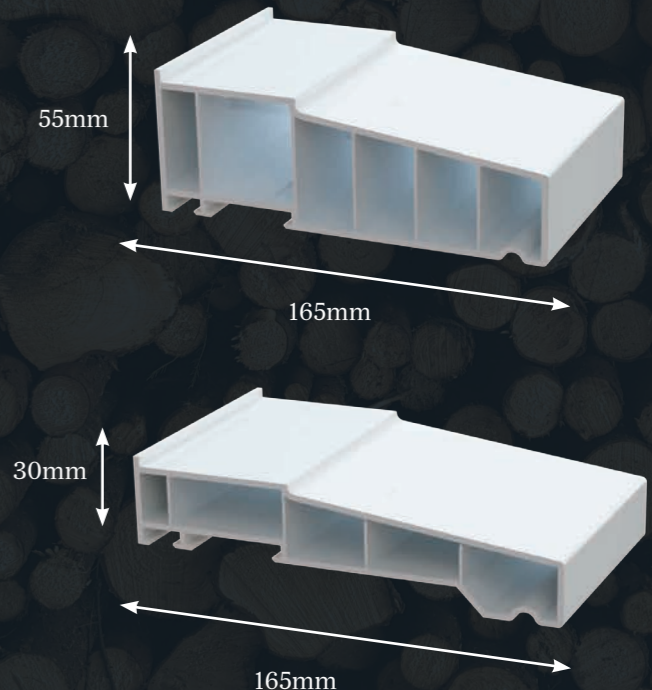
The Residence Collection offers a range of cills, if you are replacing an old timber cill 'The Radlington' is the modern interpretation of a timber cill and therefore the perfect choice. It is designed to authentically accompany your windows and doors so you can recreate that stunning traditional look.



## RANGE OF CILLS



## THE RADLINGTON CILL



## HISTORICAL SIZES

## RESIDENCE 9 SIZES



## TRICKLE VENT COVERS

With regulations in place since June 2022, trickle vents are a mandatory requirement for most installations (some homes may be exempt within conservation areas or listed buildings, this exemption should be applied for as part of your planning process). The dedicated trickle vent cover conveniently hides the vent from view so the stunning sight-lines of the windows and doors isn't compromised. With colour matching capabilities, they are designed to fit with The Residence Collection.



SCAN TO SEE OUR FULL RANGE OF HARDWARE

scan me!



“Georgian bars and weatherbar add historic detailing to the windows”



Before

After

Old timber window

Georgian bar and weatherbar match the previous window detail

|                      |   |
|----------------------|---|
| Windows              | Residence 9   |
| Location             | Sewell Park   |
| Manufacturing Method | Graf weld / seamless weld   |
| Configuration        | A mixture of dummy and opening sashes, opening were top hung. With the addition of Georgian bars and external weatherbar, perfectly replicated previous timber windows. |
| Colour               | External: Grained White<br>Internal: Grained White  |
| Glazing              | 28mm square bead  |

*External*  
Grained White  
Nearest Ral: 9003

*Internal*  
Grained White  
Nearest Ral: 9003



*R9*

*R9 was the perfect fit for this Oast house. Perfectly mirrors the sizes as historically documented & listed in Article 4 directions*



*No 10. Black*

*Named after the famous Downing Street door. It is imposing and authoritative looking, a staple and fashionable colour for many. It can make your property feel both dramatic and welcoming.*



*Grained White*

*Grained White is extremely versatile and suits all homes, this is why it's our most popular finish. Offering a traditional brilliant white painted timber look, it represents harmony and balance.*



*R9*

*R9 in No 10 Black maintains the quaint heritage look of this thatched cottage*



## Conservation Area Approved

Over the years, The Residence Collection windows and doors have been widely accepted in conservation areas and Grade II listed buildings across the UK.

If you are looking for support with your planning application we have some resources you might find useful, including CAD files for the different profiles, case studies and a full list of areas in the UK where The Residence Collection has been accepted.



Conservation Area Installation



Grade II Listed Installation

*For replacing windows and doors in conservation areas / listed buildings in Scotland or Northern Ireland please check with your local planning authority.*

Look out for these icons when searching for an installer on our website. This means they will have experience in fitting The Residence Collection in conservation areas and/or listed buildings.



*“The windows have been designed for timber replacement & aesthetically they look the part”*

NCHA Property Services

“It's not timber, it's something better!”



Beautiful low maintenance timber alternative

Before



Timber windows in need of some TLC



Fully flush sightlines maintain the traditional aesthetic

After

|                      |   |
|----------------------|---|
| Windows              | Residence 9   |
| Location             | Howle Hill  |
| Manufacturing Method | Mechanical joints   |
| Configuration        | Side hung windows with a single horizontal Georgian bar & floating mullion was specified to create a French window. |
| Colour               | External: Cotswold Green<br>Internal: Grained White   |
| Glazing              | 28mm decorative bead  |

External  
Cotswold Green  
Nearest Ral: 6021

Internal  
Grained White  
Nearest Ral: 9003



SCAN TO VIEW CONSERVATION AREA INSTALLATIONS



scan me!

## Traditional Colours & Homes

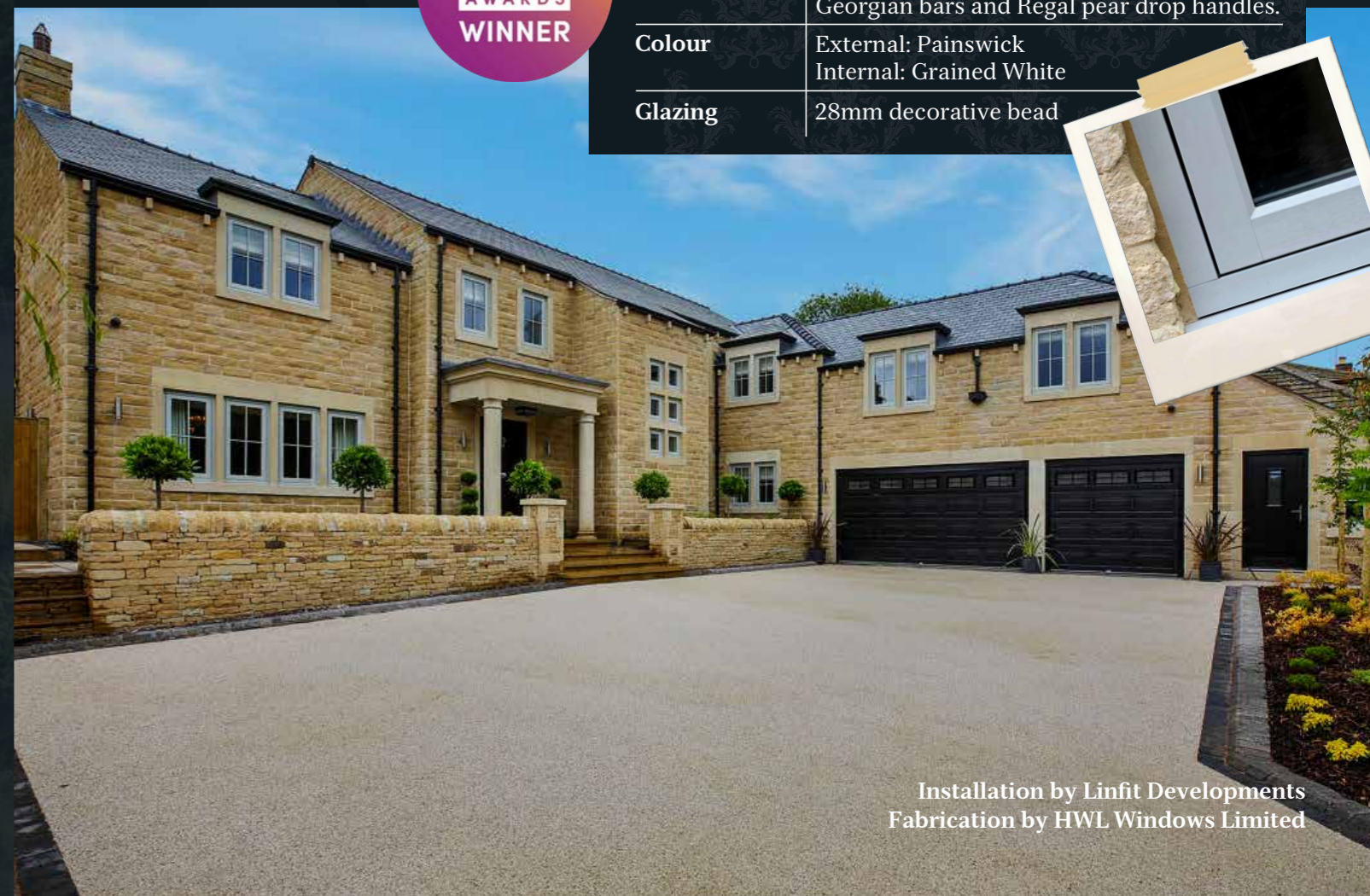
Recreate or maintain heritage aesthetics with The Residence Collection.

Mix and match for the perfect Tudor mock look - Grained White sash with a No.10 Black frame and transom mullions. Match your corner-posts for a decorative look, and add leaded glass for the ultimate heritage aesthetic.

Corse Lawn is beautiful against Cotswold stone, whilst Grained White can perfectly replicate the prestige painted look of a manor house and English Oak can revive a sophisticated country barn.



|                      |  |
|----------------------|--|
| Windows              | Residence 9  |
| Manufacturing Method | Timberweld®  |
| Configuration        | Featuring side hung single casements with Georgian bars and Regal pear drop handles. |
| Colour               | External: Painswick<br>Internal: Grained White                                       |
| Glazing              | 28mm decorative bead   |





## WINDOWS & DOORS

THE WAY THEY'RE  
MEANT TO BE™




**Conservation  
Area Installation**



**Grade II Listed  
Installation**

Look out for these icons when searching for an installer on our website. This means they will have experience in fitting The Residence Collection in conservation areas and/or listed buildings.

 Printed On Recycled Paper

THE  
**RESIDENCE**  
COLLECTION

Get in Touch

T: 01452 300912 W: [residencecollection.co.uk](https://www.residencecollection.co.uk) E: [journey@residencecollection.co.uk](mailto:journey@residencecollection.co.uk)



#myresidence #residencecollection

The Residence Collection is a registered UK trademark of Window Widgets Limited. © Copyright 2024.

\*Your chosen installer should do a professional survey and advise on the suitability of The Residence Collection in your property and/or area.