

# final report

June 2, 2026

## Traffic Assessment

Radcliffe Inn  
311 West Jefferson Street  
La Grange, KY

Prepared for

Oldham County Planning and Zoning Commission



**DIANE B. ZIMMERMAN**  
Traffic Engineering, LLC

12803 High Meadows Pike  
Prospect, KY 40059  
502.648.1858  
diane zim@att.net



## Table of Contents

INTRODUCTION .....	2
Figure 1. Site Map.....	2
EXISTING CONDITIONS .....	2
Figure 2. Existing Peak Hour Volumes .....	3
FUTURE CONDITIONS .....	3
Figure 3. 2027 No Build Peak Hour Volumes.....	3
TRIP GENERATION .....	4
Table 1. Peak Hour Trips Generated by Site .....	4
Figure 4. Peak Hour Trip Distribution .....	4
Figure 5. Peak Hour Trips Generated by Site.....	5
Figure 6. 2027 Build Peak Hour Volumes .....	5
ANALYSIS .....	6
CONCLUSIONS .....	6
APPENDIX .....	7

## INTRODUCTION

The site plan for The Radcliffe Inn on the corner of Jefferson Street at 4<sup>th</sup> Avenue in La Grange, KY shows a twelve-room boutique hotel with an event space. **Figure 1** displays a map of the site. Access to the development will be from a driveway on Fourth Avenue. The purpose of this study is to identify the traffic characteristics of this development and the adjacent road.



**Figure 1. Site Map**

## EXISTING CONDITIONS

Fourth Avenue is maintained by La Grange with an estimated 2026 Average Annual Daily Traffic (AADT) volume of 300 vehicles per day south of Jefferson Street, as estimated by applying the K factor of 13.5 from the Kentucky Transportation Cabinet 2023 count at station A15. The street has two ten-foot lanes with on-street parking. The speed limit is 25 mph. The intersection with Jefferson Street is controlled with a stop sign on Fourth Avenue. There are no turn lanes at the intersection.

Peak hour traffic count for the intersection was obtained from Tuesday, May 12, 2026. The a.m. peak hour occurred between 8:00 and 9:00 and the p.m. peak hour occurred between 4:30 and 5:30. **Figure 2** illustrates the 2026 peak hour traffic volumes.

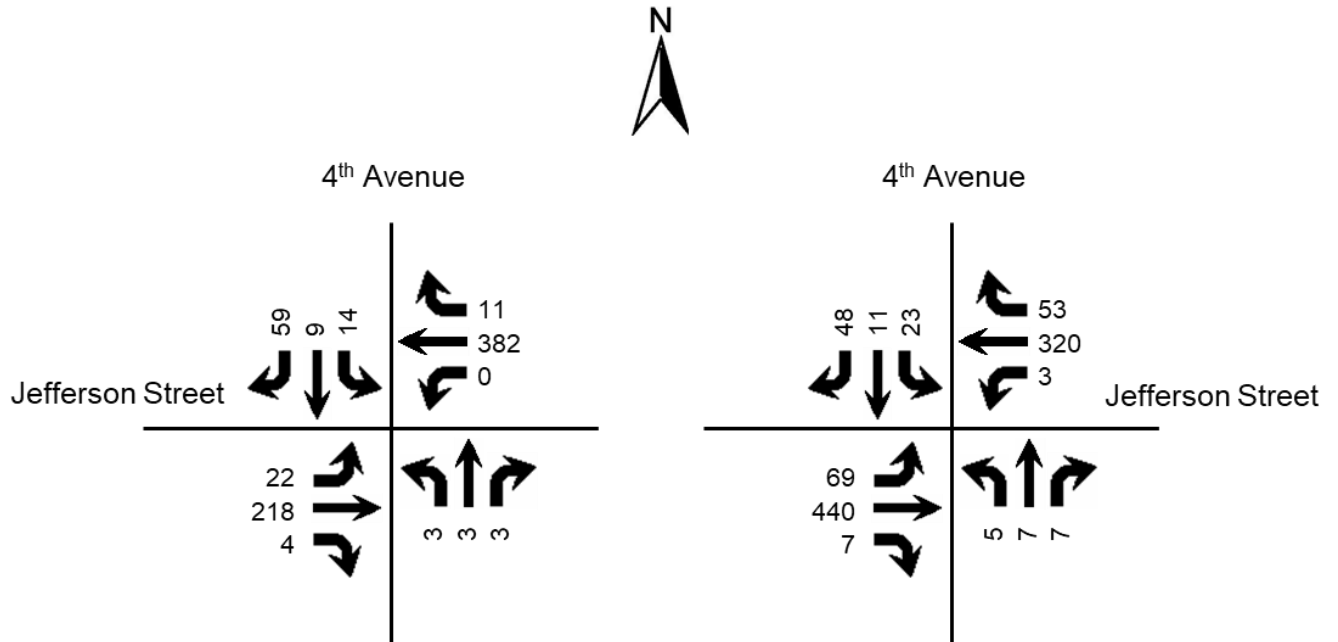


Figure 2. Existing Peak Hour Volumes

### FUTURE CONDITIONS

The projected completion and future analysis year for this project is 2027. An annual growth rate of 0.5 percent was applied. **Figure 3** displays the 2027 No Build volumes.

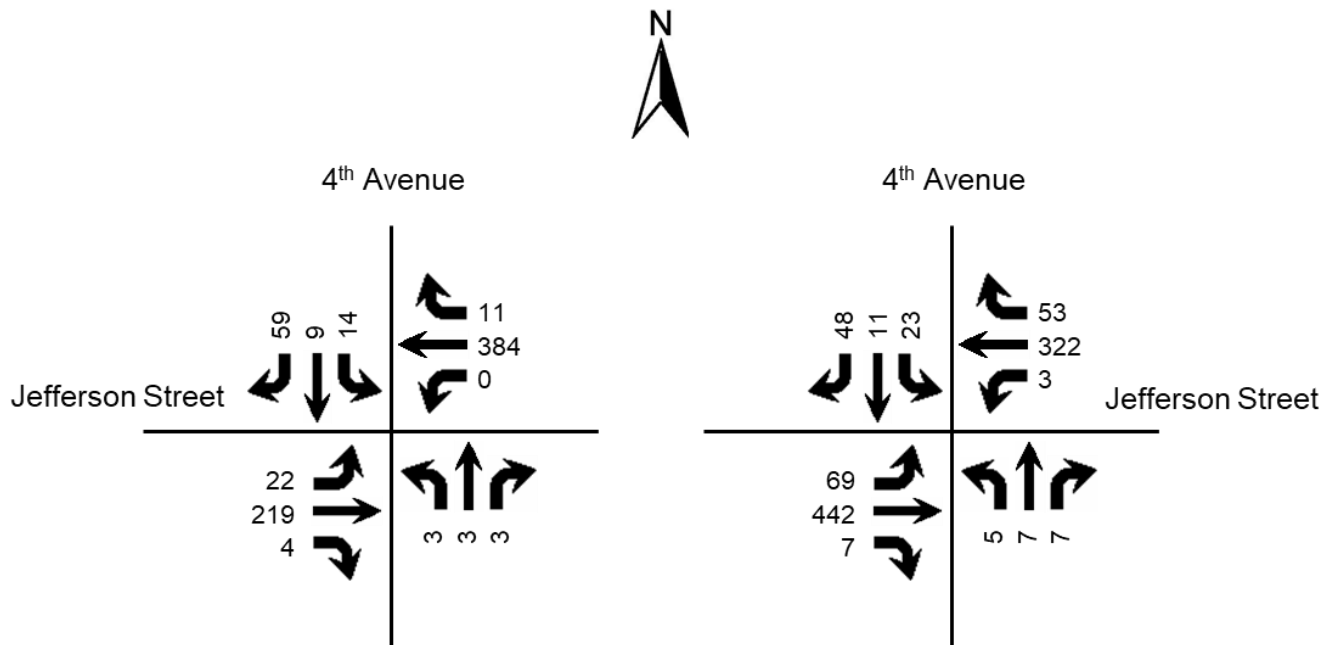


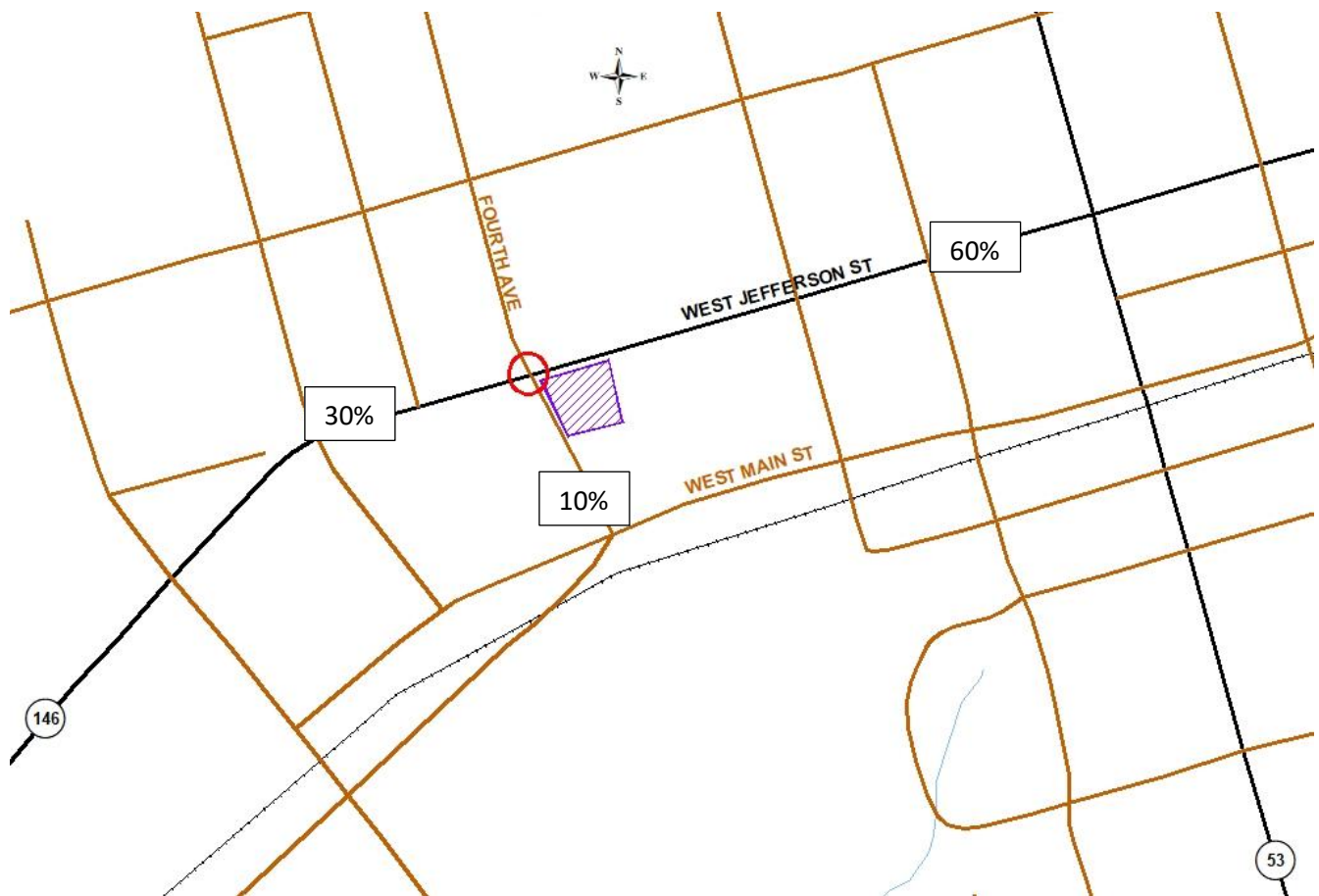
Figure 3. 2027 No Build Peak Hour Volumes

## TRIP GENERATION

The Institute of Transportation Engineers Trip Generation Manual, 12<sup>th</sup> Edition contains trip generation rates for a wide range of developments. However, there is no similar land use in the manual. The trip generation results based upon the capacity of the event center (160 people) and are listed in **Table 1**. The trip generation results are listed in **Table 1**. Trips were distributed to the adjacent highway network with the percentages shown in **Figure 4**. **Figure 5** shows the trips generated by this development and distributed throughout the road network during the peak hours. **Figure 6** displays the individual turning movements for the peak hours when the development is completed.

**Table 1. Peak Hour Trips Generated by Site**

Land Use	A.M. Peak Hour			P.M. Peak Hour		
	Trips	In	Out	Trips	In	Out
Event Space (160 people)	80	80	0	80	80	0



**Figure 4. Peak Hour Trip Distribution**

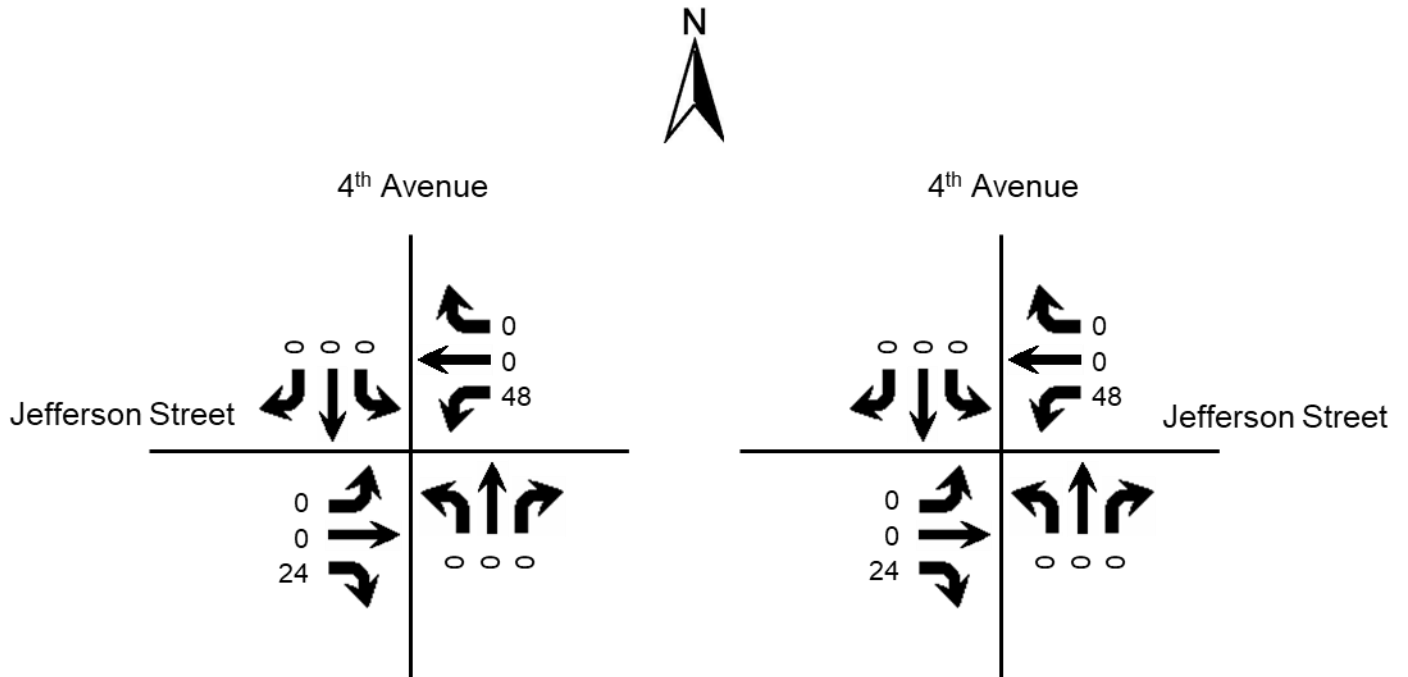


Figure 5. Peak Hour Trips Generated by Site

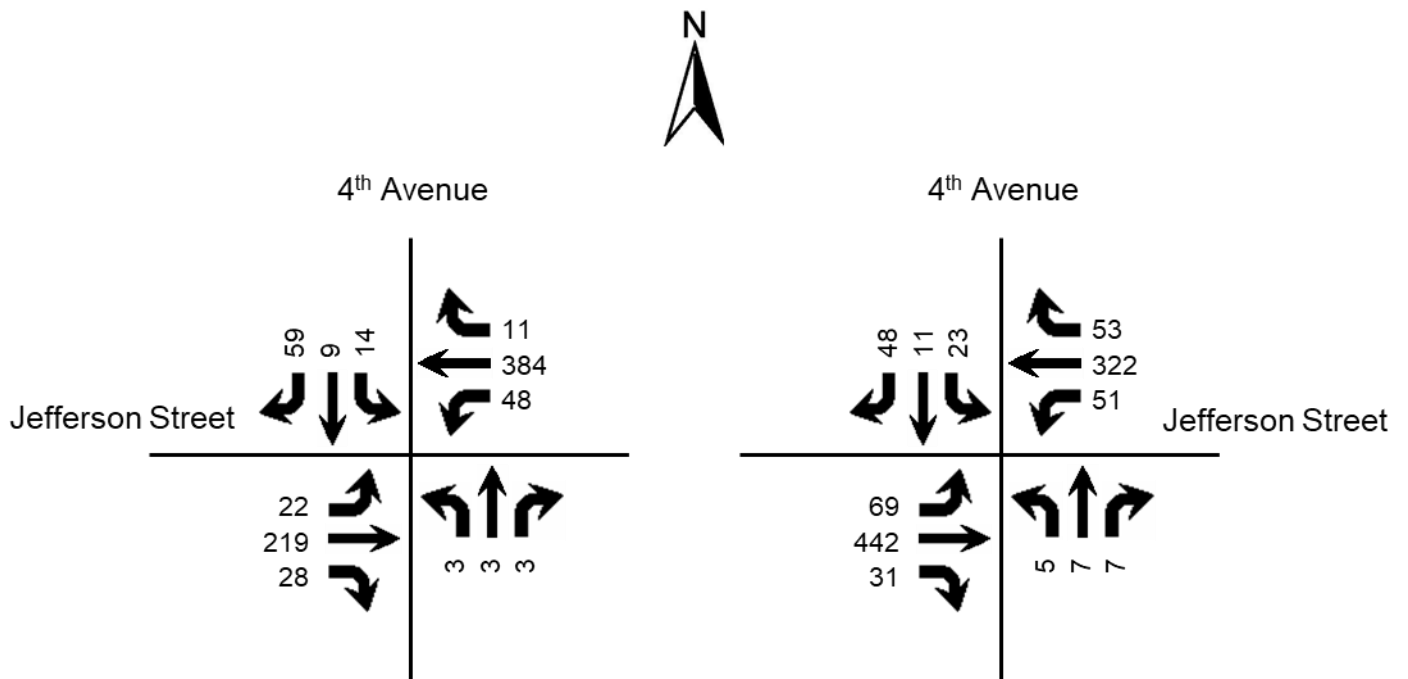


Figure 6. 2027 Build Peak Hour Volumes

## **ANALYSIS**

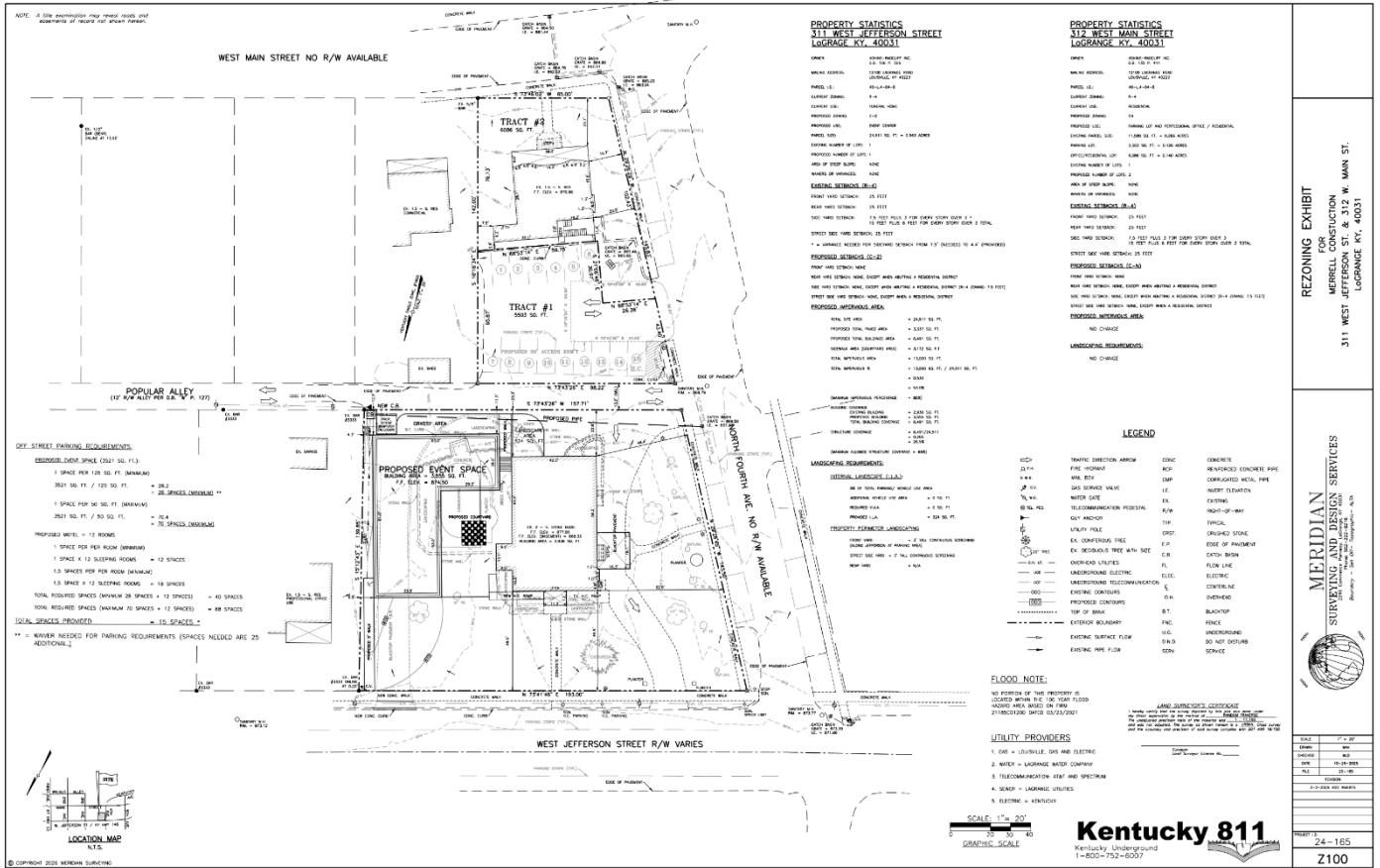
A traffic shed analysis of this project shows that 90 percent of the traffic from this development will utilize Jefferson Street (KY 146). The Major Thoroughfare Plan reported that in 2003 KY 146 was operating at Level of Service C or better. The 2003 ADT was reported to be 9,400 vehicles per day. The same count station has an estimated 2026 ADT of 9,100 vehicles per day.

## **CONCLUSIONS**

Based upon the volume of traffic generated by the site and the amount of traffic forecasted for the year 2027, there will be minimal impact to the existing highway network. No potential problems were identified during the assessment. Therefore, no mitigation for roadway capacity is necessary because of this development.

## APPENDIX

# Radcliffe Inn Traffic Assessment



Traffic Count

Classified Turn Movement Count || All vehicles



www.marrtraffic.com

LaGrange, KY

**Site 1**  
Fourth Ave (South)  
Fourth Ave (North)  
KY-146 W Jefferson St (West)  
KY-146 W Jefferson St (East)



**Date**  
Tuesday, May 12, 2026

**Weather**  
Fair  
63°F

**Lat/Long**  
38.407602°, -85.383315°  
[Click here for Map](#)

[Click here for Detailed Weather](#)

0700 - 0900 (Weekday 2h Session) (05-12-2026)

All vehicles

TIME	Northbound Fourth Ave (South)			Southbound Fourth Ave (North)			Eastbound KY-146 W Jefferson St (West)			Westbound KY-146 W Jefferson St (East)			Int Total								
	Left 1.1	Thru 1.2	Right 1.3	U-Turn 1.4	App Total	Left 1.5	Thru 1.6	Right 1.7	U-Turn 1.8	App Total	Left 1.9	Thru 1.10		Right 1.11	U-Turn 1.12	App Total	Left 1.13	Thru 1.14	Right 1.15	U-Turn 1.16	App Total
	0700 - 0715	0	1	0	0	1	3	2	15	0	20	4		28	0	0	32	0	93	3	0
0715 - 0730	0	1	0	0	1	7	2	31	0	40	5	48	0	0	53	0	117	4	0	121	215
0730 - 0745	0	0	0	0	0	4	2	11	0	17	15	59	0	0	74	0	84	7	0	91	182
0745 - 0800	1	0	0	0	1	1	4	18	0	23	4	46	0	0	50	0	65	2	0	67	141
Hourly Total	1	2	0	0	3	15	10	75	0	100	28	181	0	0	209	0	359	16	0	375	687
0800 - 0815	2	2	0	0	4	5	2	19	0	26	6	39	1	0	46	0	103	2	0	105	181
0815 - 0830	0	0	0	0	0	1	2	14	0	17	5	44	1	0	50	0	104	5	0	109	176
0830 - 0845	1	1	1	0	3	4	3	19	0	26	3	57	1	0	61	0	104	3	0	107	197
0845 - 0900	0	0	2	0	2	4	2	7	0	13	8	78	1	0	87	0	71	1	0	72	174
Hourly Total	3	3	3	0	9	14	9	59	0	82	22	218	4	0	244	0	382	11	0	393	728
Grand Total	4	5	3	0	12	29	19	134	0	182	50	399	4	0	453	0	741	27	0	768	1415
Approach %	33.33	41.67	25.00	0.00	-	15.93	10.44	73.63	0.00	-	11.04	88.08	0.88	0.00	-	0.00	96.48	3.52	0.00	-	-
Intersection %	0.28	0.35	0.21	0.00	0.85	2.05	1.34	9.47	0.00	12.86	3.53	28.20	0.28	0.00	32.01	0.00	52.37	1.91	0.00	54.28	-
Heavy Vehicle %	25	20	0	-	17	17	0	10	-	10	18	7	0	-	8	-	4	11	-	4	6
PHF	0.38	0.38	0.38	0.00	0.56	0.70	0.75	0.78	0.00	0.79	0.69	0.70	1.00	0.00	0.70	0.00	0.92	0.55	0.00	0.90	0.92
Peak Hour Total	3	3	3	0	9	14	9	59	0	82	22	218	4	0	244	0	382	11	0	393	728
Peak Hour HV %	0	33	0	0	11	21	0	14	0	13	23	7	0	0	8	0	5	9	0	5	7

1600 - 1800 (Weekday 2h Session) (05-12-2026)

All vehicles

TIME	Northbound Fourth Ave (South)			Southbound Fourth Ave (North)			Eastbound KY-146 W Jefferson St (West)			Westbound KY-146 W Jefferson St (East)			Int Total								
	Left 1.1	Thru 1.2	Right 1.3	U-Turn 1.4	App Total	Left 1.5	Thru 1.6	Right 1.7	U-Turn 1.8	App Total	Left 1.9	Thru 1.10		Right 1.11	U-Turn 1.12	App Total	Left 1.13	Thru 1.14	Right 1.15	U-Turn 1.16	App Total
	1600 - 1615	0	0	1	0	1	5	1	12	0	18	11		126	1	0	138	0	73	4	0
1615 - 1630	2	1	0	0	3	3	4	6	0	13	19	121	2	0	142	0	59	6	0	65	223
1630 - 1645	1	2	2	0	5	5	2	4	0	11	17	113	2	0	132	1	65	14	0	80	228
1645 - 1700	1	1	2	0	4	9	1	13	0	23	21	112	2	0	135	0	72	16	0	88	250
Hourly Total	4	4	5	0	13	22	8	35	0	65	68	472	7	0	547	1	269	40	0	310	935
1700 - 1715	0	2	3	0	5	5	3	13	0	21	17	117	1	0	135	2	89	11	0	102	263
1715 - 1730	3	2	2	0	7	4	5	18	0	27	14	98	2	0	114	0	94	12	0	106	254
1730 - 1745	1	4	0	0	5	9	2	12	0	23	12	92	0	0	104	0	77	14	0	91	223
1745 - 1800	0	2	0	0	2	4	4	9	0	17	12	79	1	0	92	1	73	15	0	89	200
Hourly Total	4	10	5	0	19	22	14	52	0	88	55	386	4	0	445	3	333	52	0	388	940
Grand Total	8	14	10	0	32	44	22	87	0	153	123	858	11	0	992	4	602	92	0	698	1875
Approach %	25.00	43.75	31.25	0.00	-	28.76	14.38	56.86	0.00	-	12.40	86.49	1.11	0.00	-	0.57	86.25	13.18	0.00	-	-
Intersection %	0.43	0.75	0.53	0.00	1.71	2.35	1.17	4.64	0.00	8.16	6.56	45.76	0.59	0.00	52.91	0.21	32.11	4.91	0.00	37.23	-
Heavy Vehicle %	13	0	0	-	3	2	0	8	-	5	5	3	9	-	3	0	3	2	-	3	3
PHF	0.42	0.88	0.75	0.00	0.75	0.64	0.55	0.67	0.00	0.76	0.82	0.94	0.88	0.00	0.96	0.38	0.85	0.83	0.00	0.89	0.95
Peak Hour Total	5	7	9	0	21	23	11	48	0	82	69	440	7	0	516	3	320	53	0	376	995
Peak Hour HV %	0	0	0	0	0	0	0	6	0	4	6	4	14	0	4	0	3	0	0	3	4

 **TIS Simplified Traffic Forecast**

Count Year	2026	Number of Counts	13
Opening Year	2027	Growth Rate	0.17%
Design Year	2037		
Years Back	15		

**KYTC Traffic Count Station #1**

STA ID	093A15
Paste Count Data Here	
2026	
2025	
2024	
2023	8925
2022	
2021	
2020	7139
2019	
2018	
2017	8059
2016	
2015	
2014	8291
2013	
2012	
2011	8890
2010	
2009	
2008	8230
2007	
2006	
2005	9410
2004	
2003	
2002	9360
2001	
2000	
1999	
1998	8950

**KYTC Traffic Count Station #2**

STA ID	093A07
Paste Count Data Here	
2026	
2025	2934
2024	
2023	
2022	
2021	
2020	
2019	2370
2018	
2017	
2016	2576
2015	2252
2014	2931
2013	
2012	
2011	
2010	
2009	
2008	
2007	
2004	
2003	
2002	
2001	
2000	
1999	
1998	
1997	
1996	

**KYTC Traffic Count Station #3**

STA ID	093A16
Paste Count Data Here	
2026	
2025	4981
2024	
2023	
2022	
2021	
2020	
2019	5500
2018	
2017	
2016	5527
2015	
2014	
2013	5398
2012	
2011	
2010	5540
2009	
2008	6300
2007	5430
2006	
2005	
2004	6250
2003	
2002	
2001	6210
2000	
1999	
1998	5860

