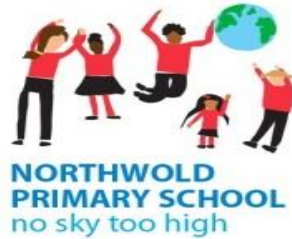


Year 6 Curriculum Meeting



Daily Routines

School timings

- 8:40am - Gates open for soft start
- 8:55am - School day begins
- 3:30pm - School day ends

Lunchtimes

Reporting absence

- Please contact the school office before 9:30am if your child is unwell and will not be in on each day of their absence.

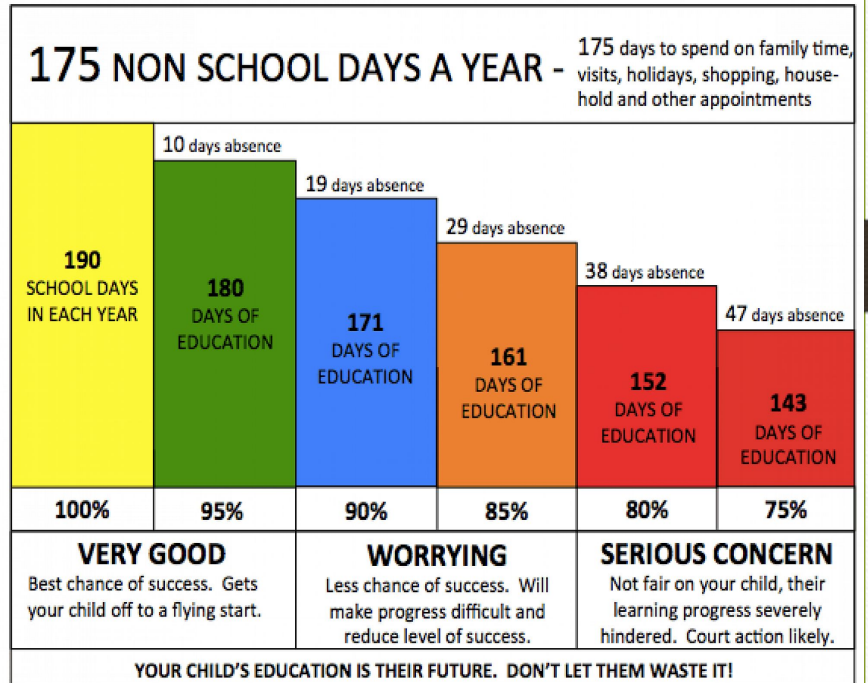
Attendance & Punctuality

Children are expected to be in school every day.

The school expectation is 98% as a minimum. This allows for 2% absence for general illness.

School liaises with the Local Authority if attendance drops below 90%.

Registers are completed promptly at 8:55am

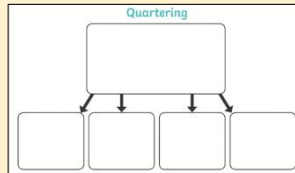
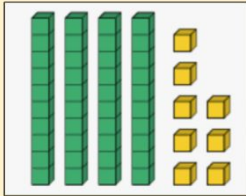
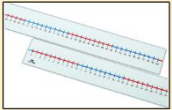


Curriculum

- Sequential learning - knowing more, remembering more
- Weekly, termly, yearly composites
- Lesson structure: recap, teacher modelling - independent work - plenary
- Resourcing and adaptation
- Hands-on experience - e.g. forest school
- Trips and visits
- Online learning - google classroom
- Keeping your child safe online

Value of Number

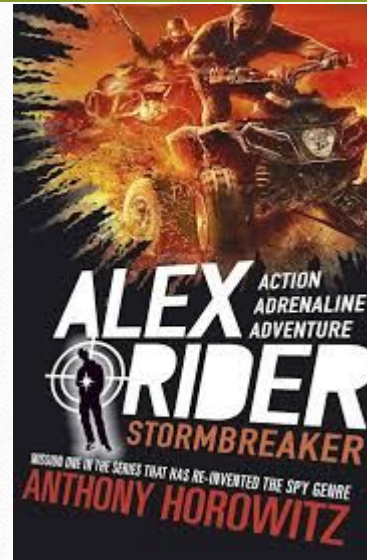
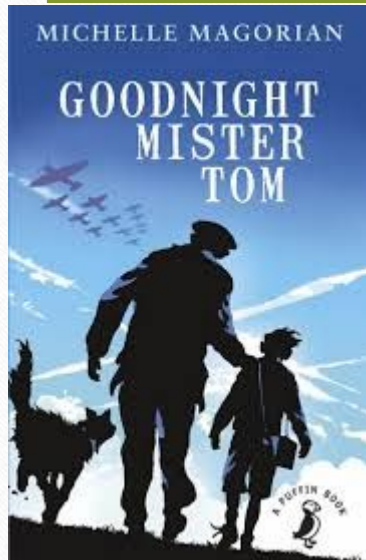
Resources



Value of number happens every day at 08:40 - 9:00 where children use concrete resources to deepen their understanding of the value of number through practical exercises

Quick Maths and Speed Reading

Shared Reading



Curriculum Overview for Main Subjects

Subject	Term		
	Autumn	Spring	Summer
History	WW2	Crime and punishment	Contrasting two non-European society with British history
Geography	Characteristics of Europe	Sustainability	Water use and rivers
Science	Living things and their habitats & Animals including humans	Evolution and inheritance	Electricity & Light
Computing	Coding	Multimedia and Computer networks	Use of media and data collection
Art	Clay	Sketching	Drawing and painting
Design and Technology	Nutritional meals	Complex structures	Computerised systems
RE	What do religions say to us when life gets hard?	Is it better to express your beliefs in art and architecture than charity and generosity?	What matters most to Christians and humanists?
PSHE/ RSHE	Being Me in My World & Celebrating difference	Dreams and Goals & Healthy Me	Relationships & Changing Me
Music	Major and minor chords	Effect of musical elements	Characteristics of different dance music
PE	Football, Basketball, Dance & Gymnastics	Tennis, Cricket, Dance & Gymnastics	Outdoor orienteering, Athletics, Hockey & Volleyball

Timetable – Yr 6

TIME	Monday	Tuesday	Wednesday	Thursday	Friday
8:55 – 9:00	Registration	Registration	Registration	Registration	Registration
9:00-9:30	Shared Reading	Shared reading	Shared Reading	Shared Reading	Shared Reading
9:30 – 10:30	Science	Speed Reading English Grammar	Mathematics	History	PE
10:30-10:45	HT Assembly	Class Assembly	Daily Mile	Music Assembly	Phase Assembly
10:45 – 11:00	BREAK				
11:00 – 12:00	Speed Reading English Reading	Music- specialist	Speed Reading English Short Writing	Speed Reading English Long Writing	Speed Reading English Reading
		PSHE			
12:00 - 1:00	LUNCH				
1:00 - 2:00	Daily Mile	Quick Maths Mathematics	PE	Quick Maths Mathematics	Quick Maths Mathematics
	Quick Maths Mathematics				
2:00-3:00		Spanish	Music -Class Teacher	Computing	Science
	Art/DT	Geography	RE		
3:00-3:15				Spelling	Spelling
3.15-3.30	Class novel		Class novel	Class novel	Class novel

PE Days



Wednesdays and Fridays

Behaviour in school

We follow the school's behaviour policy 'GOING FOR GOLD'.

Whilst the majority of children do follow the school rules and have a good attitude to their work, there are some occasions where children may need to be reminded of the expectations.



Behaviour Cards

Gold Card



Congratulations

You have reached for the stars and we are very proud of you!

Red Card



We are very concerned about your behaviour.

This warning card has been issued after a lot of consideration. We want you to reflect on your actions and what went wrong. We will work with you, with confidence, that you can turn this around.

Homework

- Tasks relating to Maths, English and Spellings.
- Optional projects based on topics being covered in the Curriculum
- Daily reading - Reading Records
 - The Reading Record can be completed by your child or you. There needs to be evidence in the record to show that they have read daily.

Assessment

- Ongoing assessments and marking
- SATs
- Reports to parents

Communication

- Website
- Text messages and email
 - Monday - Email from the school office with dates for the next 2 weeks.
 - Tuesday - Email from Class Teacher (if needed) regarding a specific class.
 - Wednesday - Any messages from the Phase Leader.
 - Thursday - Messages from Head Teacher.
 - Friday - Weekly Newsletter
- Phone calls
 - Absence and you have not let us know why.
 - Your child has had head injury and an emergency
- Injury letter

Additional Information

- Uniform
 - School uniform, PE uniform, footwear, book bag, jewelry, water bottles
- Extended school provision
 - Breakfast club, after school club, school clubs

How can you help your child?

- Work on homework together
- Practise times tables
- Regular reading
- Spelling practice
- Limit screen time