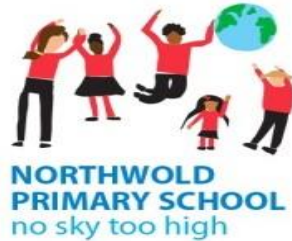


Year 5 Curriculum Meeting



Daily Routines

School timings

- 8:40am - Gates open for soft start
- 8:55am - School day begins
- 3:30pm - School day ends

Lunchtimes

Reporting absence

- Please contact the school office before 9:30am if your child is unwell and will not be in on each day of their absence.

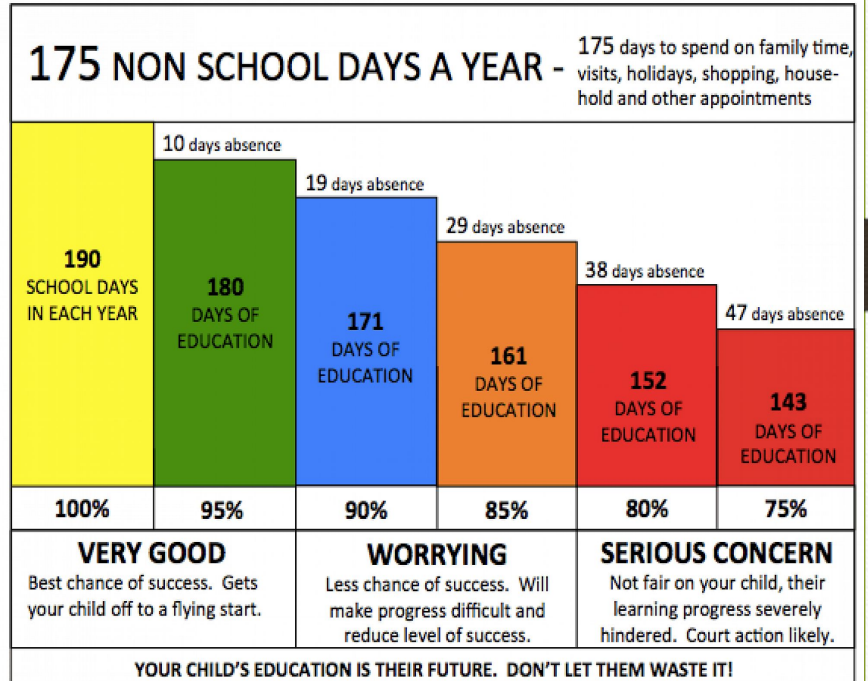
Attendance & Punctuality

Children are expected to be in school every day.

The school expectation is 98% as a minimum. This allows for 2% absence for general illness.

School liaises with the Local Authority if attendance drops below 90%.

Registers are completed promptly at 8:55am

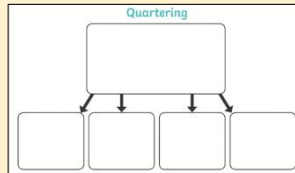
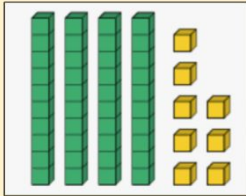
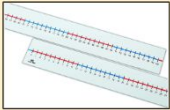


Curriculum

- Sequential learning - knowing more, remembering more
- Weekly, termly, yearly composites
- Lesson structure: recap, teacher modelling - independent work - plenary
- Resourcing and adaptation
- Hands-on experience - e.g. forest school
- Trips and visits
- Online learning - google classroom
- Keeping your child safe online

Value of Number

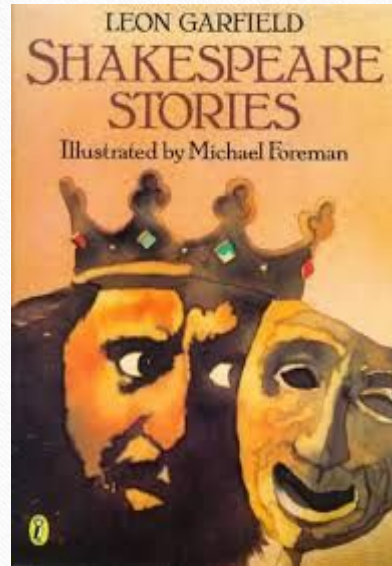
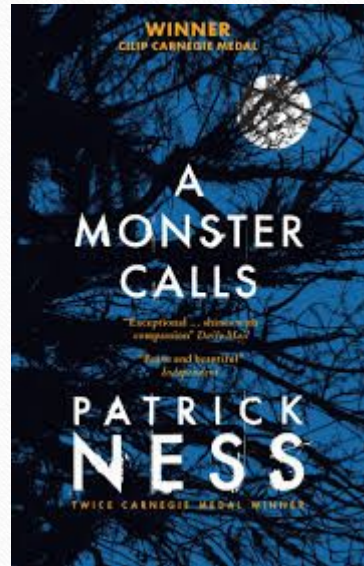
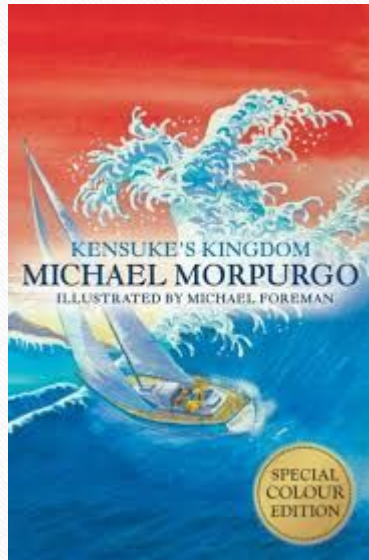
Resources



Value of number happens every day at 08:40 - 9:00 where children use concrete resources to deepen their understanding of the value of number through practical exercises

Speed Reading and Quick Maths

Shared Reading



Curriculum Overview for Main Subjects

Subject	Term		
	Autumn	Spring	Summer
History	Ancient Greece – A study of Greek life and achievements	A changing power of monarchs	Contrasting a non-European society with British history WW1
Geography	Human geography and Land use	Climate Zones	Settlements and land use
Science	Earth and Space & Forces	Living things and their habitats	Properties and changes of materials
Computing	Coding	Using technology for Art and Web development	The internet and data collection
Art	Sculpture	Painting and pattern	Landscapes
Design and Technology	Structures and mechanisms	Baking savoury dishes	Electrical systems
RE	Why do some people think God exists?	God is everywhere, why go to a place of worship?	What does it mean to be a Muslim in Britain today?
PSHE/ RSHE	Being Me in My World & Celebrating difference	Dreams and Goals & Healthy Me	Relationships & Changing Me
Music	Perform duets	Perform songs, narrations and dance	Perform three part songs
PE	Football, Basketball, Dance & Gymnastics	Tennis, Cricket, Dance & Gymnastics	Outdoor orienteering, Athletics, Hockey & Volleyball

Timetable – Yr 5

TIME	Monday	Tuesday	Wednesday	Thursday	Friday
8:55 – 9:00	Registration	Registration	Registration	Registration	Registration
9:00-9:30	Shared Reading	Shared Reading	Daily Mile	Shared Reading	Shared Reading
9:30 – 10:30	Science	Quick Maths Mathematics	PE	Speed Reading English Long Writing	History
			Shared Reading		
10:30-10:45	HT Assembly	Class Assembly	Spelling	Music Assembly	Phase Assembly
10:45-11:00	BREAK				
11:00 – 12:00	Speed Reading English – Reading	Speed Reading English - Grammar	Speed Reading English Short Writing	Music- Specialist	Speed Reading English - Reading
				Music-class teacher	
12:00 - 1:00	LUNCH				
1:00- 2:00	Quick Maths Mathematics	PE	Quick Maths Mathematics	Quick Maths Mathematics	Daily Mile
					Quick Maths Mathematics
2:00 – 3:00	Computing	RE	PSHE	Science	Art/DT
		Spanish	Geography		
3.00-3.15	Spelling	Timestables		Timestables	
3:15 -3:30	Class Novel	Class novel	Class Novel	Class Novel	

PE Days



Beech: Tuesdays and Wednesdays

Hazel: Tuesdays and Thursdays

Behaviour in school

We follow the school's behaviour policy 'GOING FOR GOLD'.

Whilst the majority of children do follow the school rules and have a good attitude to their work, there are some occasions where children may need to be reminded of the expectations.



Behaviour Cards

Gold Card



Congratulations

You have reached for the stars and we are very proud of you!

Red Card



We are very concerned about your behaviour.

This warning card has been issued after a lot of consideration. We want you to reflect on your actions and what went wrong. We will work with you, with confidence, that you can turn this around.

Homework

- Tasks relating to Maths, English and Spellings.
- Optional projects based on topics being covered in the Curriculum
- Daily reading - Reading Records
 - The Reading Record must be brought to school each day along with the reading book (even if the reading book is not ready to be changed).
 - The Reading Record can be completed by your child or you. There needs to be evidence in the record to show that you have read with your child daily. d

Assessment

- Ongoing assessments and marking
- Termly summative assessments
- Reports to parents

Communication

- Website
- Text messages and email
 - Monday - Email from the school office with dates for the next 2 weeks.
 - Tuesday - Email from Class Teacher (if needed) regarding a specific class.
 - Wednesday - Any messages from the Phase Leader.
 - Thursday - Messages from Head Teacher.
 - Friday - Weekly Newsletter
- Phone calls
 - Absence and you have not let us know why.
 - Your child has had head injury and an emergency
- Injury letter

Additional Information

- Uniform
 - School uniform, PE uniform, footwear, book bag, jewelry, water bottles
- Extended school provision
 - Breakfast club, after school club, school clubs

How can you help your child?

- Work on homework together
- Practise times tables
- Regular reading
- Spelling practice
- Limit screen time