

Year 4 Curriculum Meeting



**NORTHWOLD
PRIMARY SCHOOL**
no sky too high

Daily Routines

School timings

- 8:40am - Gates open for soft start
- 8:55am - School day begins
- 3:30pm - School day ends

Lunchtimes

- 12pm-1pm

Reporting absence

- Please contact the school office before 9:30am if your child is unwell and will not be in on each day of their absence.

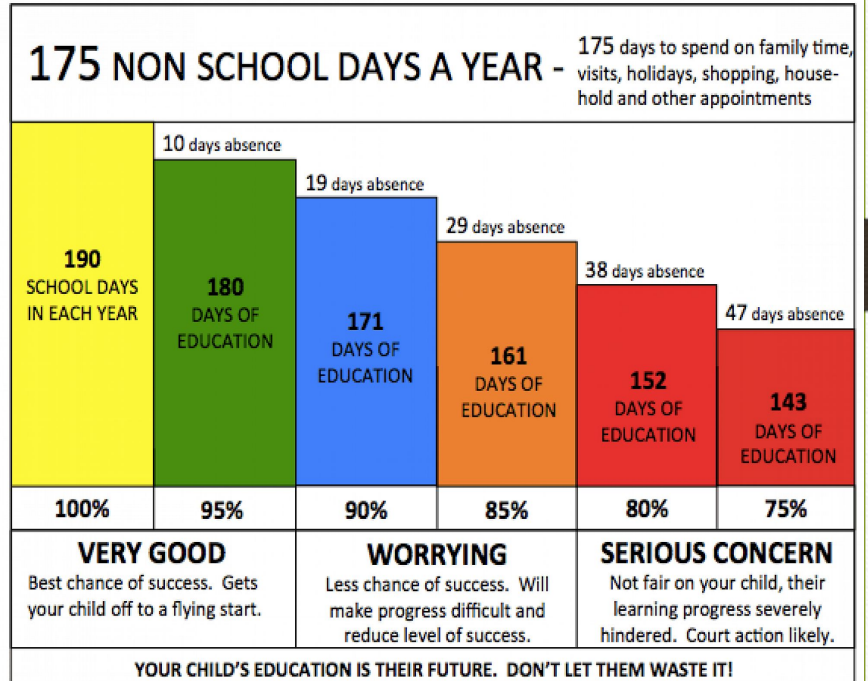
Attendance & Punctuality

Children are expected to be in school every day.

The school expectation is 98% as a minimum. This allows for 2% absence for general illness.

School liaises with the Local Authority if attendance drops below 90%.

Registers are completed promptly at 8:55am

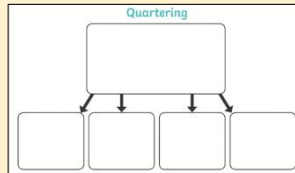
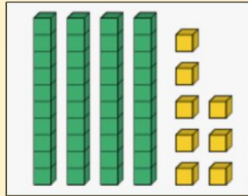
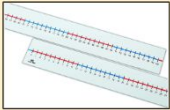


Curriculum

- Sequential learning - knowing more, remembering more
- Weekly, termly, yearly composites
- Lesson structure: recap, teacher modelling - independent work - plenary
- Resourcing and adaptation
- Hands-on experience - e.g. forest school
- Trips and visits
- Online learning - google classroom
- Keeping your child safe online

Value of Number

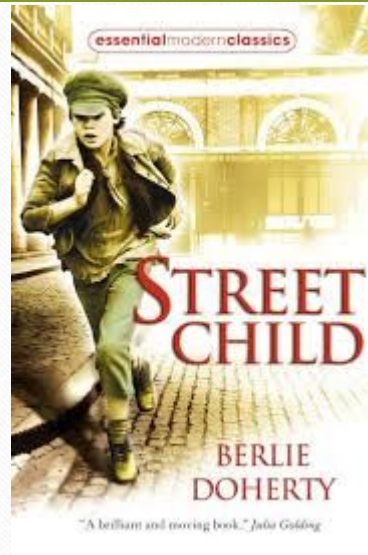
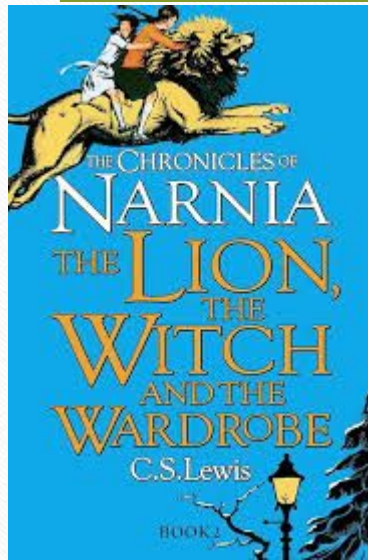
Resources



Value of number happens every day at 08:40 - 9:00 where children use concrete resources to deepen their understanding of the value of number through practical exercises

Speed Reading and Quick Maths

Shared Reading



Curriculum Overview for Main Subjects

Subject	Term		
	Autumn	Spring	Summer
History	Britain's settlement by Anglo-Saxons and Scots	The Viking and Anglo-Saxon struggle for the Kingdom of England	A local history study
Geography	Land use	Key aspects of physical geography	UK and the Americas
Science	Living things and their habitats & Animals, including humans	States of matter	Sound & Electricity
Computing	Coding	Digital music and HTML	The internet and data collection
Art	Charcoal	Colour and Line	Painting and colour
Design and Technology	Cooking and seasonality	Gears and pulleys	Materials to build structures
RE	Why is Jesus inspiring to some people?	Why do some people think that life is like a journey and what significant experiences mark this?	What does it mean to be a Hindu in Britain?
PSHE/ RSHE	Being Me in My World & Celebrating difference	Dreams and Goals & Healthy Me	Relationships & Changing Me
Music	Sing with accuracy	Play and compose melodies	Create and develop melodic ideas
PE	Football, Netball, Dance, Gymnastics, Swimming	Badminton, Rounders, Dance, Gymnastics	Outdoor orienteering, Athletics, Tag Rugby and Team Games

Timetable – Yr 4

TIME	Monday	Tuesday	Wednesday	Thursday	Friday
8:55 – 9:00	Registration	Registration	Registration	Registration	Registration
9:00-9:30	Shared Reading	Shared Reading	Shared Reading	Shared Reading	Shared Reading
9:30 – 10:30	Speed Reading English - Reading	Speed Reading English - Grammar	Speed Reading English - Short Writing	Quick Maths Mathematics	Geography
10:30-10:45	HT Assembly	Daily Mile	Class Assembly	Music Assembly	Phase Assembly
10:45-11:00	BREAK				
11:00-12:00	Quick Maths Mathematics	PSHE	Art/DT	Speed Reading English - Long Writing	Speed Reading English - Reading
		Spanish			
12:00-1:00	LUNCH				
1:00-2:00	PE	Quick Maths Mathematics	Daily Mile	Music-Class teacher Music specialist	Quick Maths Mathematics
			Quick Maths Mathematics		
2:00-3:00	Computing	Science	History	PE	RE
					Science
3:00-3.15	Times table	Spelling	Daily mile		
3:15-3.30	Class novel	Class novel	Class Novel		

PE Days



Cedar: Monday and Thursdays

Hawthorn: Mondays and Fridays

Behaviour in school

We follow the school's behaviour policy 'GOING FOR GOLD'.

Whilst the majority of children do follow the school rules and have a good attitude to their work, there are some occasions where children may need to be reminded of the expectations.



Behaviour Cards

Gold Card



Congratulations

You have reached for the stars and we are very proud of you!

Red Card



We are very concerned about your behaviour.

This warning card has been issued after a lot of consideration. We want you to reflect on your actions and what went wrong. We will work with you, with confidence, that you can turn this around.

Homework

- Tasks relating to Maths, English and Spellings.
- Optional projects based on topics being covered in the Curriculum
- Daily reading - Reading Records
 - The Reading Record must be brought to school each day along with the reading book (even if the reading book is not ready to be changed).
 - The Reading Record can be completed by your child or you. There needs to be evidence in the record to show that you have read with your child daily. d

Assessment

- Ongoing assessments and marking
- Termly summative assessments
- Multiplication Check
- Reports to parents

Communication

- Website
- Text messages and email
 - Monday - Email from the school office with dates for the next 2 weeks.
 - Tuesday - Email from Class Teacher (if needed) regarding a specific class.
 - Wednesday - Any messages from the Phase Leader.
 - Thursday - Messages from Head Teacher.
 - Friday - Weekly Newsletter
- Phone calls
 - Absence and you have not let us know why.
 - Your child has had head injury and an emergency
- Injury letter

Additional Information

- Uniform
 - School uniform, PE uniform, footwear, book bag, jewelry, water bottles
- Extended school provision
 - Breakfast club, after school club, school clubs

How can you help your child?

- Work on homework together
- Practise times tables
- Regular reading
- Spelling practice
- Limit screen time