

Year 3 Curriculum Meeting



**NORTHWOLD
PRIMARY SCHOOL**
no sky too high

Daily Routines

School timings

- 8:40am - Gates open for soft start
- 8:55am - School day begins
- 3:30pm - School day ends

Lunchtimes

- 12pm-1pm

Reporting absence

- Please contact the school office before 9:30am if your child is unwell and will not be in on each day of their absence.

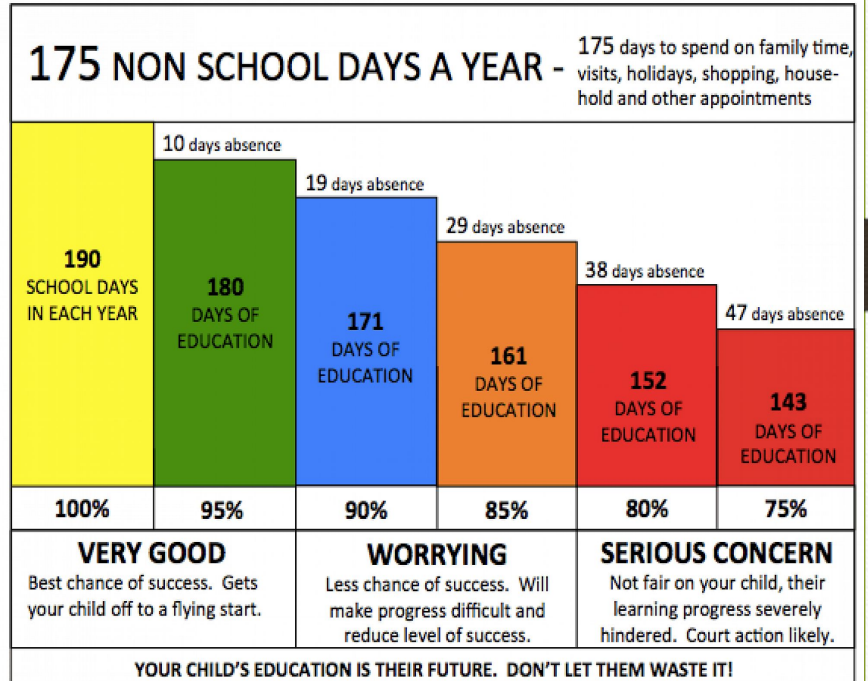
Attendance & Punctuality

Children are expected to be in school every day.

The school expectation is 98% as a minimum. This allows for 2% absence for general illness.

School liaises with the Local Authority if attendance drops below 90%.

Registers are completed promptly at 8:55am

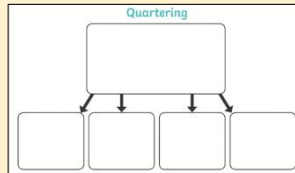
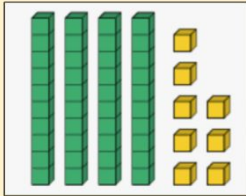
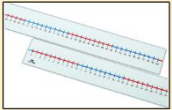


Curriculum

- Our curriculum is knowledge based.
- The curriculum layout clarifies end points that all children should achieve at the end of the week, term and year.
- The curriculum is broken down into manageable composites and components of knowledge.
- We use retrieval, recall, recap and rehearsal as strategies to ensure that children remember what they learn.
- The curriculum is a progression model. It is sequenced to ensure cumulative layers of knowledge.

Value of Number

Resources



Value of number happens every day at 08:40 - 9:00 where children use concrete resources to deepen their understanding of the value of number through practical exercises

Curriculum Overview for Main Subjects

Subject	Term		
	Autumn	Spring	Summer
History	Changes in Britain from the Stone age to the Iron age	Achievement of an early civilization - Ancient Egypt	The Roman empire and its impact on Britain
Geography	Environmental regions	Rivers	Europe
Science	Rocks & forces and magnets	Plants	Animals, including humans & Light
Computing	Coding	Video and computer networks	Emails and data collection
Art	Textiles	Pottery	Mosaics
Design and Technology	Textiles	Food for healthy teeth	Cams and linkages
RE	What do different people believe about God?	Why do people pray?	What does it mean to be a Christian in Britain today?
PSHE/ RSHE	Being Me in My World & Celebrating difference	Dreams and Goals & Healthy Me	Relationships & Changing Me
Music	Improvise and compose songs	Perform and compose songs	Notate pitch and rhythm
PE	Football, Netball, Dance & Gymnastics	Badminton, Rounders, Dance, Gymnastics	Outdoor orienteering, Athletics, Tag Rugby and Team Games

Timetable – Yr 3

TIME	Monday	Tuesday	Wednesday	Thursday	Friday
8:55 – 9:00	Registration	Registration	Registration	Registration	Registration
9:00-9:30	HT Assembly	Spanish	Phase Assembly	Music Assembly	Shared Reading
9:30 – 10:30	PE		Shared Reading	Shared Reading	
		Music Specialist	History	Science	
		10:00 Daily Mile			
	(10:15am) Break	PE	BREAK	Spelling	
Shared Reading (10:15 – 10:45)	Shared Reading				Speed Reading - 5min English-Short Writing
10:45-11:00	BREAK	Shared Reading	BREAK		
11:00 – 12:00	Speed Reading- 5min English - Reading		Speed Reading - 5min English-Short Writing	Speed Reading - 5 min English-Long Writing	Speed Reading- 5mins English – Reading
12:00 – 1:00	LUNCH				
1:00-2:00	Quick Maths Mathematics	Quick Maths Mathematics	Quick Maths Mathematics	Quick Maths Mathematics	Quick Maths Mathematics
2:00-3:00	Science	Speed Reading English - GPS	PHSE	Music Class Teacher	Art/DT
3.00-3.15	Times tables	Class Assembly	Computing	RE	Times tables
3.15-3.30	Class Novel	Class novel		Spelling	

PE Days



Mondays and Tuesdays

Behaviour in school

We follow the school's behaviour policy 'GOING FOR GOLD'.

Whilst the majority of children do follow the school rules and have a good attitude to their work, there are some occasions where children may need to be reminded of the expectations.



Behaviour Cards

Gold Card



Congratulations

You have reached for the stars and we are very proud of you!

Red Card



We are very concerned about your behaviour.

This warning card has been issued after a lot of consideration. We want you to reflect on your actions and what went wrong. We will work with you, with confidence, that you can turn this around.

Homework

- Tasks relating to Maths, English and Spellings.
- Optional projects based on topics being covered in the Curriculum
- Daily reading - Reading Records
 - The Reading Record must be brought to school each day along with the reading book (even if the reading book is not ready to be changed).
 - The Reading Record can be completed by your child or you. There needs to be evidence in the record to show that you have read with your child daily. d

Assessment

- Termly summative assessments
- Reports to parents

Communication

- Website
- Text messages and email
 - Monday - Email from the school office with dates for the next 2 weeks.
 - Tuesday - Email from Class Teacher (if needed) regarding a specific class.
 - Wednesday - Any messages from the Phase Leader.
 - Thursday - Messages from Head Teacher.
 - Friday - Weekly Newsletter
- Phone calls
 - Absence and you have not let us know why.
 - Your child has had head injury and an emergency
- Injury letter

Additional Information

- Uniform
 - School uniform, PE uniform, footwear, book bag, jewelry, water bottles
- Extended school provision
 - Breakfast club, after school club, school clubs

How can you help your child?

- Work on homework together
- Practise times tables
- Regular reading
- Spelling practice
- Limit screen time