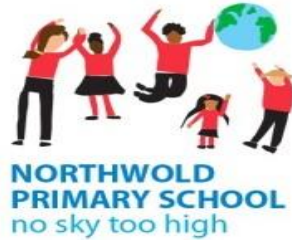


Year 2 Curriculum Meeting



Daily Routines

School timings

- 8:40am - Gates open for soft start
- 8:55am - School day begins
- 3:30pm - School day ends

Lunchtimes

Reporting absence

- Please contact the school office before 9:30am if your child is unwell and will not be in on each day of their absence.

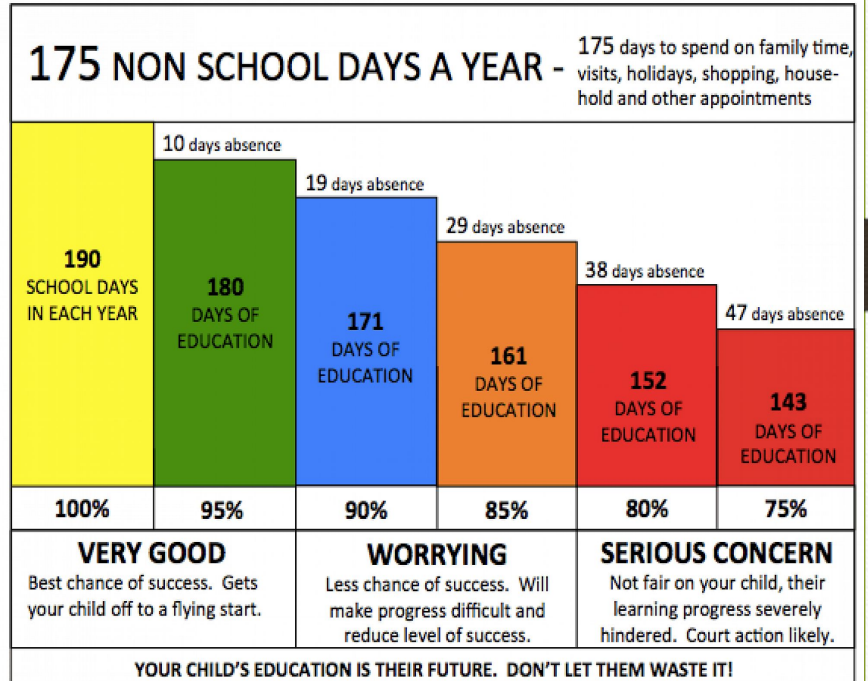
Attendance & Punctuality

Children are expected to be in school every day.

The school expectation is 98% as a minimum. This allows for 2% absence for general illness.

School liaises with the Local Authority if attendance drops below 90%.

Registers are completed promptly at 8:55am

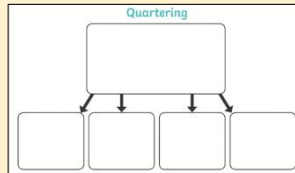
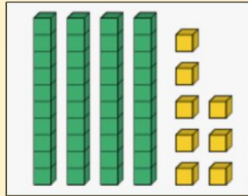
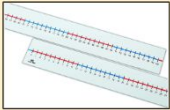


Curriculum

- Our curriculum is knowledge based.
- The curriculum layout clarifies end points that all children should achieve at the end of the week, term and year.
- The curriculum is broken down into manageable composites and components of knowledge.
- We use retrieval, recall, recap and rehearsal as strategies to ensure that children remember what they learn.
- The curriculum is a progression model. It is sequenced to ensure cumulative layers of knowledge.

Value of Number

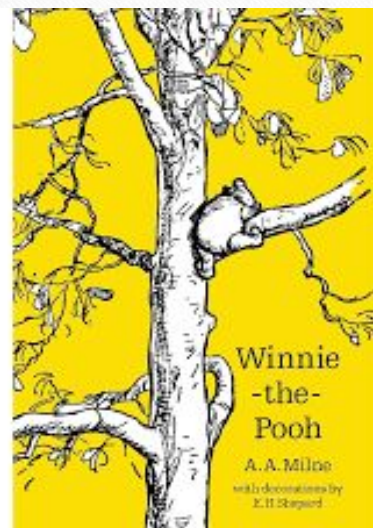
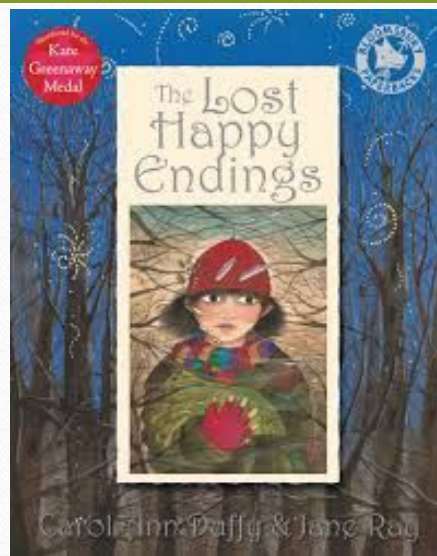
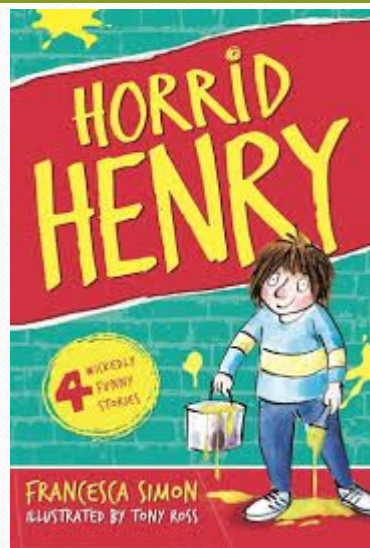
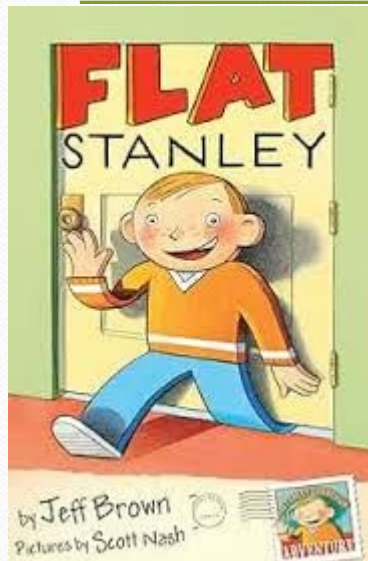
Resources



Value of number happens every day at 08:40 - 9:00 where children use concrete resources to deepen their understanding of the value of number through practical exercises

Speed Reading and Quick Maths

Shared Reading



Curriculum Overview for Main Subjects

Subject	Term		
	Autumn	Spring	Summer
History	Events beyond living memory	Life of significant individuals	Lives of significant individuals
Geography	London	The world	Contrasting UK and a Non-European country
Science	Living things and their habitats	Uses of everyday materials	Animals, including humans
Computing	Coding	Photography and using the internet to research	Emails and data collection
Art	Silhouettes	Sculpture	Landscapes
Design and Technology	Bridges	Levers and sliders	Seasonal meals
RE	Muslim and Jewish beliefs	What can we learn from sacred books?	How should we care for others and the world, and why does it matter?
PSHE/ RSHE	Being Me in My World & Celebrating difference	Dreams and Goals & Healthy Me	Relationships & Changing Me
Music	Pulse and rhythm of songs	Tuned percussion instruments	Perform and compose songs
PE	Balls skills, Movement skills, Dance & Gymnastics	Racket skills, Striking & Fielding, Dance & Gymnastics	Outdoor orienteering, Athletics, Attacking & defending and Team Games

Timetable – Yr 2

TIME	Monday	Tuesday	Wednesday	Thursday	Friday
8:55 – 9:00	Registration	Registration	Registration	Registration	Registration
9:00-9:15	HT Assembly	Class Assembly	Phase Assembly	Music Assembly	Phonics
9:15 – 9:35	Phonics	Phonics	Phonics	Music Specialist (9:15-9:45)	Shared Reading
9:35 – 9:55	Shared Reading	Shared Reading	Shared Reading	Music - Class teacher (9:45 – 10:15)	Speed Reading English - Reading class teacher
9:55 – 10:45	Science	History	Geography	10:15 BREAK	Spelling
10:45-11:00	BREAK			PE	BREAK
11:00 – 12:00	Speed Reading English - Reading	Speed Reading English - GPS	Speed Reading English - Short Writing	Phonics Shared Reading	PE
12:00 – 1:00	LUNCH				
1:00-2.00	Quick Maths Mathematics	Quick Maths Mathematics	Quick Maths-5mins Mathematics	Speed Reading-5mins English - Long Writing	Quick Maths-5mins Mathematics
2:00 – 2:15	Daily Mile/BREAK				
2:15 – 3:15	Computing	Science	Art/DT	Quick Maths-5 mins Mathematics	RE
2:45 – 3:15					PSHE
3:15-3:30	Class novel	Class novel	Class novel	Class novel	Class novel

PE Days

Thursday and Friday



Behaviour in school

We follow the school's behaviour policy 'GOING FOR GOLD'.

Whilst the majority of children do follow the school rules and have a good attitude to their work, there are some occasions where children may need to be reminded of the expectations.



Behaviour Cards

Gold Card



Congratulations

You have reached for the stars and we are very proud of you!

Red Card



We are very concerned about your behaviour.

This warning card has been issued after a lot of consideration. We want you to reflect on your actions and what went wrong. We will work with you, with confidence, that you can turn this around.

Homework

- Tasks relating to Maths, English and Spellings.
- Optional projects based on topics being covered in the Curriculum
- Daily reading - Reading Records
 - The Reading Record must be brought to school each day along with the reading book (even if the reading book is not ready to be changed).
 - The Reading Record can be completed by you. There needs to be evidence in the record to show that you have read with your child every day.
 - Books matched to phonics and understanding

Assessment

- Key Stage 1 SATs
- Report cards
- Annual report

Communication

- Website
- Text messages and email
 - Monday - Email from the school office with dates for the next 2 weeks.
 - Tuesday - Email from Class Teacher (if needed) regarding a specific class.
 - Wednesday - Any messages from the Phase Leader.
 - Thursday - Messages from Head Teacher.
 - Friday - Weekly Newsletter
- Phone calls
 - Absence and you have not let us know why.
 - Your child has had head injury and an emergency
- Injury letter

Additional Information

- Uniform
 - School uniform, PE uniform, footwear, book bag, jewelry, water bottles
- Extended school provision
 - Breakfast club, after school club, school clubs

How can you help your child?

- Work on homework together
- Practise number bonds and times tables
- Regular reading
- Phonics and Spelling practice
- Bake together
- Garden together
- Discuss what you see in the environment around you
- Limit screen time

Curriculum

- Sequential learning - knowing more, remembering more
- Weekly, termly, yearly composites
- Lesson structure: recap, teacher modelling - independent work - plenary
- Resourcing and adaptation
- Hands-on experience - e.g. forest school
- Trips and visits
- Online learning - google classroom, keeping your child safe online