

Dear Parents/Carers,

Thank you to all the parents and carers who have supported our Macmillan cake sale. This morning we received so many generous donations. This charity event is run by our school prefects. They will be hosting the cake sale after school today. We hope to see you there, supporting this important fundraiser. The money raised will go towards MacMillan's 'World's Biggest Coffee Morning' charity. We believe that learning about charity work and being charitable is an important quality to learn. Here at Northwold, we regularly fundraise for worthwhile causes and always appreciate the support we get. A big thank you must also go to the prefects, who helped make the event possible.

Thank you to the parents who have completed the parent survey – if you have not yet done it, please do so using the link below.

<https://forms.gle/pz8CkiGhvQKZF2abA>

We use the information gathered to improve the school and to improve outcomes for the children – your feedback is valued.

Next week we will be launching the readathon– children will be set the target to read as many books as they can before the end of the half term. The hand in date is the 24th October – there will be prizes for the biggest readers in each year group!

This morning we had a phonics coffee morning for the reception and Y1 parents –it was lovely to see so many of you there to learn about how we teach phonics and how to support your children with reading at home.

Finally, I would like to remind you about how important it is to keep our children safe online. There are a number of children who have access to social media groups and online apps – there is an age restriction of at least 13 years for most of these social media apps. Please support us to keep your children safe by closely monitoring how the internet is used at home.

I hope you have a lovely week end,

Kind regards

Bronwen Chalmers

Headteacher

Northwold



Diary Dates

September

30th Reception bring your parents to school morning - 9am-10am. Parents are invited to join class

October

3rd Phonics coffee morning - Year 1 & 2 parents

3rd Y6 Trip - Imperial War Museum

8th New Reception parents open day (26/27 intake)

9.30-10.30 at school or 5pm-6pm online

8th Year 4 Walthamstow wetlands trip

9th Year 3 trip to Science Museum

10th Year 2 & Year 5 Fire Brigade visit

10th Nursery parent coffee morning

10th Interschool Sports—Athletics - Year 3-6

13th Harvest Collection for local food bank and soup kitchen

15th Y1 Fluoride varnish

15th Y4 Walthamstow Wetlands trip

16th Y1 Museum of the Home trip

17th KS2 Interschool champions league debate

17th Y2 St Paul's Cathedral trip

17th Coffee Morning

23rd **CHARITY EVENT**—Wear it Pink -

fundraising for breast cancer awareness

Bring £1 donation.

Please check our calendar on our website

Class Attendance W/E 19/09/2025

Well done to **Year 4 Hawthorn & RC Ash** with the highest attendance last week. They had 100% attendance.

Class	Attendance %
2 Year Old's	93.10%
N Elm 2	96.55%
RC Asha	100%
RC Sycamore	97.00%
Y1 Redwood	95.52%
Y2 Pine	94.36%
Y3 Elder	97.89%
Y3 Teak	96.82%
Y4 Cedar	97.89%
Y4 Hawthorn	100%
Y5 Beech	99.31%
Y5 Hazel	88.93%
Y6 Juniper	98.64%
Y6 Maple	93.91%
Grand Total	96.32%

The class with the highest attendance in a term wins a lunch.

Harvest Collection

W/B 13th October 2025

**Fundraising for local food
bank and soup kitchen**



School Term dates 2025 -2026

Autumn Term: (75 days)

Monday 1st September 2025 to Friday 19th December 2025

- Monday 1st September 2025 INSET day
- Tuesday 2nd September 2025 INSET day
- Friday 24th October 2025 INSET day
- Half term holiday Monday 27th October 2025 to Friday 31st October 2025
- Christmas Holiday Monday 22nd December 2025 to Friday 2nd January 2025

Spring Term: (55 days)

Monday 5th January 2026 to Friday 27th March 2026.

- Monday 5th January 2026 INSET day
- Half term holiday Monday 16th February 2026 to Friday 20th February 2026.
- Easter holiday Monday 30th March 2026 to Friday 10th April 2026.

Summer Term: (65 days)

Monday 13th April 2026 to Monday 20th July 2026

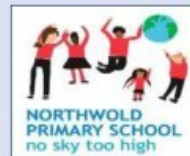
- Monday 13th April 2026 INSET day
- Half term holiday Monday 25th May 2026 to Friday 29th May 2026
- Summer holiday Tuesday 21st July

Public holidays

- Thursday 25 December 2025 (Christmas Day)
- Friday 26 December 2025 (Boxing Day)
- Thursday 1 January 2026 (New Year's Day)
- Friday 3 April 2026 (Good Friday)
- Monday 6 April 2026 (Easter Monday)



Northwold Primary School



2024 Results

Maths	93%	National 74%
Reading	90%	National 75%
Writing	93%	National 72%
Combined	90%	National 62%



Open Day

8th October 2025

9:30am – 10:30am

<https://www.northwoldschool.com/>

Northwold Road, Hackney, London E5 8RN



‘Pupils love learning here and achieve exceptionally well academically and personally.’

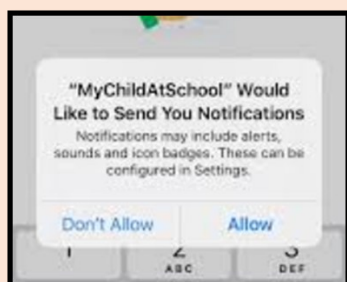
Ofsted 2024

Northwold MCAS App

Please make sure to download the app and allow **PUSH NOTIFICATIONS** so that you get alerts when the school sends SMS messages.

All bookings and payments can only be done via MCAS now.

MCAS School ID: 14881



Y6 Parents

APPLY FOR A SECONDARY SCHOOL PLACE 2025

WHO?

Apply if your child was born between 1 September 2014 and 31 August 2015.

WHEN?

Apply before 31 October 2025.

Offer day is Monday 2 March 2026

HOW?

Apply online at www.eadmissions.org.uk

Follow the step-by-step instructions in this guide.

REMINDER

Year 4

Swimming Lessons
2 weeks - Daily Sessions
22/09/2025-03/10/2025

Please make sure to bring your swimming costumes everyday for the two weeks.



Nursery Spaces Available

Apply Now!

We still have spaces in Nursery for 2 and 3 - year old children. Part time or full-time applications are welcomed. Please contact the school office or email office@northwold.hackney.sch.uk for further information.

PE Days

Monday Year 3, Year 4
Tuesday Year 3, Year 4, Year 5
Wednesday Year 1, Year 5 Beech, Year 6
Thursday Year 2, Year 4 Cedar, Year 5 Hazel
Friday Year 1, Year 2, Year 4 Hawthorn, Year 6

School Trips

Over the year, your child will be invited to join their class on a school trip. You will soon be receiving letters outlining the details of upcoming trips, allowing you enough time to prepare for them. If there is a cost to the trip, it can be paid via MCAS.

CLASS	DATE	TRIP DESCRIPTION
	TBC	Visit to the local shop
Nursery	18/11/25	Visit: Museum of the Home
Reception	TBC	Local Walk
	20/11/25	Finsbury Park Mosque Visit
Year 1	16/10/25	Visit: Museum of the Home
	26/1/26	St Michaels Church
YEAR 2	17/10/25	Visit St Paul's Cathedral
	10/10/25	London Fire Brigade Workshop - in school
YEAR 3	9/10/25	Science Museum
	26/11/25	Buddhapadipa Temple (Wimbledon)
Year 4	08/10/25 & 15/10/25	Visit: Walthamstow Wetlands
	10/10/25	London Fire Brigade Workshop - in school
	26/9/25	Visitor: Space dome
YEAR 5	5/11/25	Trip: Brunel Museum
YEAR 6		
	5/10/25	Visit: IWM London
	15/10/25	ABBA Voyage
	TBC	Hackney Town Hall

Arbor Interschool Athletics Competition

Well done to all our children who attended the Art Competition this morning. It was hosted at Northwold, schools from across the trust attended.

Children were asked to create a still life using pencil and water colour. Well done to everyone who took part!

First Place – Selwyn

Second Place – Northwold (Blake Y4)

Third Place – Northwold (Danyaal Y6)

Fourth Place – Davies Lane

Finalists – Yordanus (Y4), Kitty (Y4), Kiannah (Y6)



Caught Being Kind

Please find below the names of the children in each year group who are recognised for their kindness this week.

Nursery	Cooper (Elm 1)	Mathias (Elm 2)
Reception	Ava (Sycamore)	Phoenix (Ash)
Year 1	Zara (Redwood)	
Year 2	Adnan (Pine)	
Year 3	Inaaya (Elder)	Umut (Teak)
Year 4	Hashim (Cedar)	Musa (Hawthorn)
Year 5	Amy (Beech)	Harman (Hazel)
Year 6	Asel (Juniper)	Adam (Maple)

What is on the menu next week

Northwold Primary School Menu – Week 1

	Monday MEAT FREE MONDAY	Tuesday	Wednesday	Thursday	Friday
Meat Choice	Homemade Vegetable Pizza (G, MK)	Chicken & Vegetable Lasagne (G, MK, MU)	Lamb Curry (CE, MU)	Chicken Sausage with Gravy (G, MK, SO, SU, CE, MU)	Cod Fish Fingers (F, G)
Vegetarian Choice	Whole meal Pasta with Vegetables in Tomato Sauce (G)	Vegan Sausage Roll (G, V)	Vegetable Chow Mein (G, E, SO, V)	Cheese or Tuna Wrap with Salad (G, MK, MU, F, E)	Jacket Potato with Cheese (MK)
Alternative Choice	Vegetable Pasty (G, V, MK, MU)	Stuffed Peppers (V)	Baked Salmon with Lemon Sauce (F)	Red Kidney Bean & Vegetable Stew (V)	Vegetable Samosa (G, V)
Sides	Bread Potato Wedges (G, MK, E)	Bread Diced Potatoes (G, MK, E)	Homemade Bread Brown Rice (G, MK, E)	Bread Mash Potatoes (G, MK, E)	Homemade Bread Oven Chips (G, MK, E)
Vegetables	Mixed Vegetables Cauliflower	Diced Carrot Broccoli	Sweetcorn Peas	Sliced Carrots Green Beans	Baked Beans
Dessert Choice	Fruit Jelly Fruit Yogurt Fresh Fruit (MK)	Iced Sponge with Custard Fruit Yogurt Fresh Fruit (MK, G)	Fresh Fruit Salad Fruit Yogurt Fresh Fruit (MK)	Cheese & Crackers Fruit Yogurt Fresh Fruit (G, MK)	Ice Cream Fruit Yogurt Fresh Fruit (MK)
Dietary Information	Fresh salad served daily - All our meat is Halal V - Vegetarian SO - contains Soya CE - contains Celery MK - contains Milk G - contains Gluten SU - contains Sulphur Dioxide F - contains Fish MU - contains Mustard E - Egg				

Attendance and Punctuality

Attendance and Punctuality is key. All children should be in school every day. We want all our children to have 97% attendance or above. This term we will be awarding pupils with attendance badges for those who come into school every day!

Look out for the GOLD, SILVER and BRONZE badges.

If your child is unable to attend because they are unwell, please contact the school office by 8:30am to let us know. That way, we can authorise the absence. We will contact you if we have not heard from you as part of our safeguarding processes.

Punctuality is also important. Our gates are open from 8:40am for a soft start. Children can attend school from 8:40am and take part in the value of number sessions in class. School officially starts at 8:55am sharp. Any child after this time is marked as late in the register. Children who arrive after 9:25am will get an unauthorised absence, which will affect your child's attendance. Please support your children by ensuring that they arrive at school on time.

Below is the link to the government website where you will find further information:

<https://www.gov.uk/school-attendance-absence>



Getting your child to school really matters. Did you know...

If your child's attendance during the school year is...

95%
90%
85%
80%
75%
70%
65%

If your child would have lost approximately...

9 Days
19 Days
29 Days
38 Days
48 Days
57 Days
67 Days

Or they would have missed approximately...

50 Lessons
100 Lessons
150 Lessons
200 Lessons
250 Lessons
290 Lessons
340 Lessons

You must not take your child on holiday during term time.
Please bring your child to school on time so that they do not miss out.
Remember absence = Lost Opportunity

Reception News

This week in Reception the children made jam sandwiches. After making them they all enjoyed eating them. The verdict was 'delicious'.



Improving Oral Health in Children:

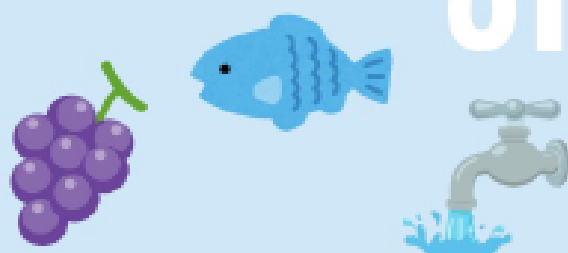
Fluoride varnish Programme in School

Fluoride Varnish: Mythbusting



What is it and how does it work?

01



Fluoride is natural

Fluoride can be found everywhere – in the air, in our water and in our food! It is a mineral that is naturally present in soil and water and some food likes fish and fruit. Fluoride is scientifically proven to strengthen teeth, making them more resistant to decay, compared to teeth that haven't been exposed to fluoride.

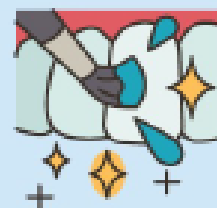
What is Fluoride Varnish?

It is a pale, yellow, gel which is painted on to children's teeth using a soft brush. The varnish sets quickly and has a pleasant taste and a fruity smell.

Many scientific studies from around the world have shown that it is effective in reducing tooth decay in children, when used in addition to brushing regularly with fluoride toothpaste.

Your child should be offered fluoride varnish at least twice-yearly from the age of two years by their own dentist.

02



School fluoride varnish programme

Your child might be invited to be part of a school/nursery fluoride varnish programme. A dental team will visit the schools and see children in small groups.

- If your child has already received fluoride varnish from the dentist – it is safe for them to have it applied at their school/nursery. They will receive an additional benefit and their teeth will come to no harm
- You should let your dentist know if it has recently been applied at nursery or school. This allows the dental team to space out your child's fluoride varnish applications to ensure the maximum benefit.



For more information about our school fluoride programmes, please scan the QR code:



03



Amount is important

Although fluoride is very good for our teeth it is important to use the right amount.

- Children who swallow too much fluoride over a long period of time may develop white spots on their teeth, although this is very unlikely. This is not tooth decay.

Brush your child's teeth and gums at least twice daily, in the morning and last thing at night. Use toothpaste containing at least 1,000 parts per million (ppm) fluoride. Only a smear for under 3 years old, pea size for under 6 years old.

04

