



Dear Parents and carers,

Well done to our year 5 pupils who took part in the Shakespeare for Schools performance last night. Thirty of our year 5 children were privileged to perform at The Source, part of the Stratford Theatre. They performed their musical, Macbeth alongside another two schools who put on The Tempest and A Midsummer Night's Dream. This was a fantastic opportunity and the children did extremely well. Thank you to Ms Pektas, who led the trip, Mrs Lawrence for her support and to all the parents who came to watch the show.

I'd like to welcome Mr Hepplewhite, who will be our new music lead, following on from Ms Liew in May. He will be delivering the Northwold music curriculum, specialist instrumentalist provision and choirs here at Northwold.

Please be reminded that on the 1st May 9-10am we will be hosting a meeting for our Y6 parents to discuss the process of the assessments over the week beginning 11th May. It is really important that you do attend this meeting if you are able to. We will follow up with a letter to parents for those who are not able to join us.

This term we continue with our inter-school sports events, debates and spelling bee competitions. We also look forward to taking children on the planned school trips. Please look out for further details regarding these from your child's teacher.

Wishing you a pleasant week end,

Kind Regards

Bronwen Chalmers
Headteacher

Important Information Regarding Term-Time Attendance and National Education Penalties

At Northwold Primary School, we are committed to providing your child with the best possible start in life. Regular school attendance is fundamental to this goal.

As we work together to support your child's academic progress and social development, I am writing to share information regarding term-time holidays and unauthorised absences and the national framework for attendance penalties.

Following the latest Department for Education (DfE) guidance, "Working together to improve school attendance," there is a clear link between high attendance and levels of achievement. When children miss school, they miss essential learning and the social interactions that build confidence.

The government has introduced a national framework for all schools regarding penalty notices. If a child has 10 sessions (usually 5 days) of unauthorised absence, a penalty notice may be issued.

The regulations regarding fines are as follows:

- **After 10 unauthorised sessions, the fine is £80 per parent, per child if paid within 21 days. This rises to £160 if paid between 21 and 28 days.**
- **If a second penalty notice is issued to the same parent for the same child within a three-year period, the fine is a flat rate of £160 per parent, per child.**
- **A third penalty notice cannot be issued. Instead, the case will be referred directly to Magistrates' Court for prosecution. This can lead to a criminal record and significantly higher financial penalties.**

We understand that life can be busy, but we urge you to schedule holidays and appointments during the 13 weeks of school breaks available throughout the year.

If you are experiencing specific challenges with your child's attendance, please reach out to us as soon as possible. We will work with you to provide support and overcome barriers.



Diary Dates

April

28th Individual/Sibling Photos

May

1st Y6 SATs Assessment Meeting for parents 9-10am

Occupation Day

4-10 Children's Book Week

4th Bank Holiday

8th Nursery Parent Coffee Morning

11-15 KS2 SATs

14th Debating Challenge

15th Coffee Morning 9-10am

18th Nursery/Reception Sports Day

20th Sports Day

21st Parent Council 9-10am

22nd Interschool Art Gallery Showcase
Debating Challenge Semi-Finals
Coffee Morning RSHE Y4, Y5, Y6 9:15-10:00
Pre Loved Uniform Sale

25th Half Term

27th Eid (TBC)

June

4th Interschool Champions League Debate

5th World Environment Day
Y6 Meeting—Residential Trip

8th Nursery Coffee Morning

14th Debating Challenge excluding Y6

15th RSHE Coffee Morning Y1-3 9-10am

Please check the calendar on our website

<https://www.northwoldschool.com/>

WANTED: COMPOSERS AGES 4 - 11!

It's time to take your sounds from your bedroom to the **BIG STAGE!** We are officially launching the **Composition Competition**

THE CHALLENGE

Create your very own piece of music at home. It can be anything you like:

- **A Catchy Song:** Write some lyrics and sing.
- **An Epic Track:** Use an app (like GarageBand or BandLab) or your own DIY drums (pots and pans allowed!).
- **A Classic Tune:** Play a piece you've made up on an instrument you play.

THE GRAND PRIZE

- **The Big Showcase:** The best entry in each year group will be performed or played at our special **winners' assembly!**
- The **overall winner** will be presented with a **trophy**.
- Your friends and teachers will get to hear your work performed.

HOW TO ENTER

1. **Record it or write it down:** Ask a grown-up to help you record your music on a phone or tablet or ask your music teacher to help you write it down.
2. **Send it:** Email or hand your music to Miss Rawlinson by **Friday 24th April**.
3. **Label it:** Make sure to include your **Name** and **Year Group**.

Don't worry about being perfect—we just want to hear your unique style!

READY TO ROCK?

Grab your instruments, clear your throat, and start composing. We can't wait to hear what you create!

Key Stage 2

MUSIC ACTIVITIES

MAKE SOME NOISE & FIND YOUR VOICE!
Trust-Wide Music Clubs for Year 3 to Y6

TRUST SAMBA BAND
High-energy, loud, and rhythmic!
Play authentic Brazilian drums
Perform at festivals, huge concerts, parades, and competitions.
When and where: Tuesdays, 4:30pm – 5:30pm at Selwyn Primary School
Cost: £50 per term

TRUST CHOIR
Meet new friends and perform at big events!
When and where: Thursdays, 4:30pm – 5:30pm at Northwold Primary School
Cost: FREE!

Contact: caroline.rawlinson@arboracademytrust.co.uk

School Term dates 2025 -2026

Summer Term: (65 days)

- Monday 13th April 2026 to Monday 20th July 2026
- Monday 13th April 2026 INSET day
- Half term holiday Monday 25th May 2026 to Friday 29th May 2026
- Summer holiday Tuesday 21st July

Public holidays

- Friday 3 April 2026 (Good Friday)
- Monday 6 April 2026 (Easter Monday)
- Monday 4 May 2026
- Monday 25 May 2026
- Monday 31 August 2026

Menu Changes

Please note that there have been a number of changes to our menu.

To view our new menu's, please visit our website;

<https://www.northwoldschool.com/school-dinners>

PE Summer Days

Please find the PE dates for this term below:

Year 1: Wednesday

Year 2: Thursday

Year 3: Tuesday & Wednesday

Year 4: Monday & Wednesday

Year 5 (Beech): Tuesday & Wednesday

Year 5 (Hazel): Tuesday & Friday

Year 6 : Wednesday & Friday

MON	TUE	WED	THU	FRI
		Y1		
			Y2	
	Y3	Y3		
Y4		Y4		
	Y5 BEECH	Y5 BEECH		
Y5 HAZEL		Y5 HAZEL		
		Y6		Y6

School Term dates 2026 -2027

Autumn Term: (73 days)

- Wednesday 2nd September 2026 to Friday 18th December 2026
- Wednesday 2nd September 2026 INSET day
- Thursday 3rd September 2026 INSET day
- Friday 23rd October 2026 INSET day
- Half term holiday Monday 26th October 2026 to Friday 30th October 2026
- Christmas Holiday Monday 21st December 2026 to Friday 1st January 2027

Spring Term: (54 days)

- Monday 4th January 2027 to Thursday 25th March 2027.
- Monday 4th January 2027 INSET day
- Half term holiday Monday 15th February 2027 to Friday 19th February 2027.
- Easter holiday Friday 26th March 2027 to Friday 9th April 2027.

Summer Term: (68 days)

- Monday 12th April 2027 to Thursday 22nd July 2027
- Monday 12th April 2027 INSET day
- Half term holiday Monday 31st May 2027 to Friday 4th June 2027
- Summer holiday Friday 23rd July

Public holidays

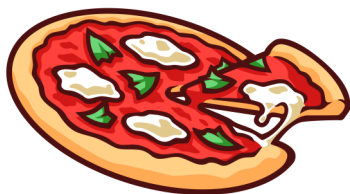
- Friday 25th December 2026 (Christmas Day)
- Monday 28th December 2026 (Boxing Day)
- Friday 1st January 2027 (New Year's Day)
- Friday 26th March 2027 (Good Friday)
- Monday 29th March 2027 (Easter Monday)
- Monday 3rd May 2027
- Monday 31st May 2027
- Monday 30th August 2027

Class Attendance W/E 13/04/2026

Well done to **2 Year Old's** with the highest attendance last week. They had **100%** attendance.

Class	Attendance %
2 Year Old's	100.0%
N Elm 2	97.5%
RC Ash	94.7%
RC Sycamore	95.0%
Y1 Redwood	95.6%
Y2 Pine	93.1%
Y3 Elder	96.3%
Y3 Teak	84.2%
Y4 Cedar	92.8%
Y4 Hawthorn	92.0%
Y5 Beech	92.1%
Y5 Hazel	96.9%
Y6 Juniper	95.8%
Y6 Maple	92.1%
Grand Total	93.8%

**THE CLASS WITH
THE HIGHEST
ATTENDANCE
WILL WIN A PIZZA
PARTY AT THE
END OF THE
TERM!**



Debating Challenge!

Our Debate Challenge will take place in stages next term. Students will compete to earn a place in the next round, successful teams will then progress to the semi-finals.

Please find the dates below:

Classroom Debate Heats: 14th May

Semi-Finals: 22nd May



School Trips



We have lots of exciting trips planned this term.

Please ensure that you have paid for them on MCAS ahead of the date to ensure we are able to go on the trip.

Northwold Parent Survey Summer 2026

We are always looking for ways to improve and provide the best possible experience for our students and families. To support this, we would greatly appreciate it if you could take a few minutes to complete our short survey.

The survey is completely anonymous and is designed to gather your honest feedback on what is working well and where we can make improvements. Your input is incredibly valuable and will help guide our future decisions.

Thank you in advance for your time and support.

[Northwold Parent Survey Summer 2026](#)

School Photographs

This is a reminder that school photographs will take place on Tuesday 28th April.

If your child has a brother or sister in the school and you would like a photo of them together, **please arrive at school at 8:15am**, as these photos will be taken before the school day begins.



Caught Being Kind

Please find below the names of the children in each year group who are recognised for their kindness this week.

Congratulations!

ZaNursery	(Elm 1) Zain	(Elm 2) Maariyah
Reception	(Sycamore) Khaleel	(Ash) Zaynab
Year 1	(Redwood) Sienna	
Year 2	(Pine) Abdul Jalil	
Year 3	(Elder) Khalid	(Teak) Jamaal
Year 4	(Cedar) Ala	(Hawthorn) Sophia
Year 5	(Beech) Twana	(Hazel) Frankie
Year 6	(Juniper) Willow	(Maple) Danyaal

What is on the menu after the Easter Holiday?

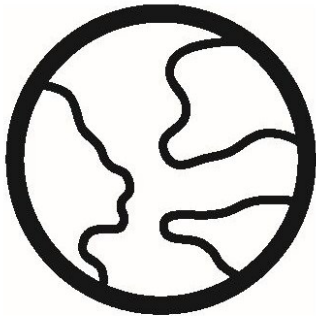
Northwold Primary School Menu – Week 3

	Monday	Tuesday	Wednesday	Thursday	Friday
	MEAT FREE MONDAY				
Meat Choice	Vegetable Chow Mein (E)	Chicken Burger with Salad (G, M)	Lamb Meatballs with Spaghetti (G, MU, SO)	Tandoori Chicken (MU)	Cod Fish Fingers (F, G)
Vegetarian Choice	Peri-peri rice with Vegetables (V)	Vegetable Lasagne (G, V, MK)	Egg Curry (F, G)	Vegetarian Moussaka (F, MK, G)	Jacket Potato with Tuna/Cheese & Beans (MK, F)
Alternative Choice	Bean quesadilla DL (V, G, S)	Falafel and hummus wrap (V, G, MK)	Vegan Sausage Roll (V, G)	Chickpea & Vegetable Stew (V)	Vegetable Samosa (V)
Sides	Coleslaw Bread (G, MK, E)	Bread Garlic bread (G, MK, E)	Homemade Bread Spaghetti (G, MK, E, MU, SO)	Bread Brown Rice (G, MK, E)	Homemade Bread Oven Baked Chips (G, MK, E)
Vegetables	Mixed Vegetables Cauliflower	Sliced Carrot Broccoli	Sweetcorn Peas	Julienne Carrots Green Beans	Baked Beans Mushy Peas
Dessert Choice	Fruit Jelly Plain Yogurt Fresh Fruit (MK)	Banana bread DL (V, E, MK, G, S) Plain Yogurt Fresh Fruit (MK, G)	Fresh Fruit Salad Fruit Yogurt Fresh Fruit (MK)	Cheese & Crackers Fruit Yogurt Fresh Fruit (G, MK)	Ice Cream Fruit Yogurt Fresh Fruit (MK)
Dietary Information	Fresh salad served daily - All our meat is Halal V - Vegetarian CE - contains Celery G - contains Gluten F - contains Fish E - Egg SO - contains Soya MK - contains Milk SU - contains Sulphur Dioxide MU - contains Mustard				

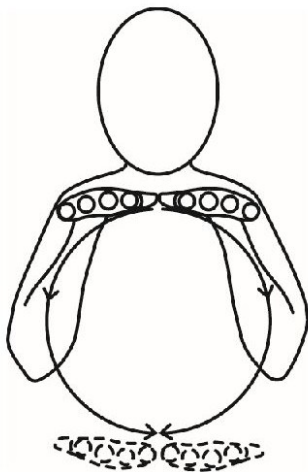
SEND CORNER

Sign of the Week

Learning a new sign each week helps everyone in our setting become more confident in using Makaton, making our environment more inclusive and supportive for all children. You are welcome to practise the sign at home too! We will share the sign each week so you can join in.



Earth/ World



Earth/ World

If you need anymore information, please feel free to contact.

Autism Support for Parents & Carers

Autism Coffee Mornings—Hackney Ark

Run by Occupational Therapy and Clinical Psychology teams.

- Meet other parents and carers
- Share experiences in a supportive space
- Speak directly with clinicians
- Online and face-to-face sessions available

National Autistic Society (NAS)

Trusted information and guidance for parents, young people and schools.

- Education and EHCP advice
- Local support information

www.autism.org.uk

Ambitious about Autism—Talking Tuesdays

Free webinar series for parents and carers.

- Practical advice
- Expert guidance
- Opportunities to ask questions

ambitiousaboutautism.org.uk (search: Talking Tuesdays)

You are not alone—support and community are available.

Summer Trips

Please see below the upcoming trips taking place this Summer Term.

Payments can be made through the MCAS app.

Class	Trip	Date
Nursery	Ark & Farm Workshop	Thursday 11 June
	London Zoo	Tuesday 16 June
Reception	National Gallery	Tuesday 12 May
	Ark & Farm Workshop (onsite)	Thursday 11 June
Y1	South End	Thursday 4 June
Y2	East London Synagogue	Tuesday 9 June
	Royal Greenwich Observatory	Wednesday 17 June
Y3	The Market at Roman Verulamium	Thursday 7 May
Y4	Ragged School	Wednesday 13 May
	Young V&A	Tuesday 30 June
Y5	Cambridge University Workshop (onsite)	Wednesday 10 June
Y6	Thames Explorer	Monday 1 June
	Osmington Bay Residential	Friday 26 June—Monday 29 June

Shakespeare Schools Festival

Students took part in the **Coram Shakespeare Schools Foundation Festival**, the world's largest youth drama festival, held at The Source.

This exciting opportunity allowed students to rehearse and perform a Shakespeare production on a professional stage, building confidence, teamwork, and performance skills. Throughout the process, they demonstrated dedication, creativity, and enthusiasm, both in rehearsals and during the final performance.

We are incredibly proud of their commitment and the way they represented the school.

