

Dear Parents and Carers,

At the end of term, you will be receiving your child's mid term report. We would like to take this opportunity to explain how to read and understand your child's termly report card and the attainment terms that are used.

Children's learning and progress are assessed three times across the school year. These assessments allow teachers to record attainment and carefully measure the progress your child is making over time. This helps us to identify strengths, celebrate successes, and provide support where it is needed.

By the end of the academic year, children are expected to be working at EXS (Expected Standard) for their age group. This means they are meeting the national expectations for their year.

Some children may be assessed as GDS (Greater Depth Standard). This indicates that they have exceeded the expected standard and are applying their learning confidently and consistently in more complex and challenging contexts.

Other children may be assessed as WTS (Working Towards the Standard). This means they are not yet fully meeting the expected standard but are continuing to make progress towards it. This is a normal part of learning, and many children move between these categories as they develop throughout the year.

Although your child may have reached EXS or GDS at the end of the previous year, they may be WTS in the autumn or spring term of the following year as they start learning the new curriculum for the year. This is nothing to be concerned about and the staff will set targets to ensure progress throughout the year.

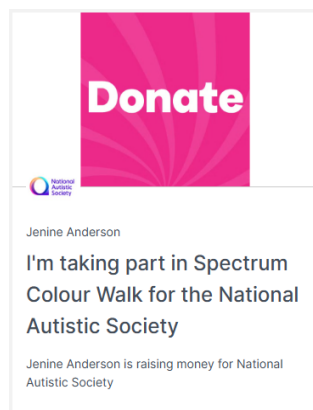
It is important to remember that children do not all progress at the same rate. A termly snapshot does not define your child's potential, but rather helps us track progress and plan the next steps in learning.

If you have any questions about your child's report or would like to discuss their progress in more detail, please speak to your child's class teacher at the upcoming parents evening. They will be more than happy explain this further.

Thank you for your continued support.

Kind regards,

Bronwen Chalmers
Headteacher



Scan the QR to donate!



Blake and his family are taking part in a 5K walk for the National Autistic Society on April 19th at Battersea Park.

If you would like to support them at this worthy cause please use the link below. All contributions will go to help funding education, workplace and social challenges that so many of Autistic community face.

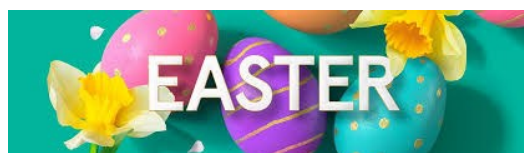
[https://waam.autism.org.uk/fundraising/
jenineanderson-1771845270979?
utm_medium=FR&utm_source=dssb-
WA&utm_content=MPC](https://waam.autism.org.uk/fundraising/jenineanderson-1771845270979?utm_medium=FR&utm_source=dssb-WA&utm_content=MPC)

Easter Bonnet Parade

How can you help?

We are looking for donations for prizes in the raffle at the Easter Bonnet Parade and for donations of cakes and eats to sell on the day. We would really appreciate it if you could support our Friends of Northwold in making this event a big success! All donations can be left with the school office.

Thank you for your support!





Diary Dates

March

25th Easter Bonnet Parade with Cake Sale

26th Parent's Evening 3:30-7:00pm

Pre-loved Uniform Sale

27th Attendance Lunch for the class with the highest attendance!

30th **Easter Holiday**

April

2nd Autism Awareness Day

14th Pupils return

17th Eid Event

23rd BBC Ten Pieces for Parents

24th SEND Coffee Morning 9-10am

28th Individual/Sibling Photos

May

1st Y6 SATs Assessment Meeting for parents 9-10am

Occupation Day

4-10 Children's Book Week

4th Bank Holiday

8th Nursery Parent Coffee Morning

11-15 KS2 SATs

14th Debating Challenge

15th Coffee Morning 9-10am

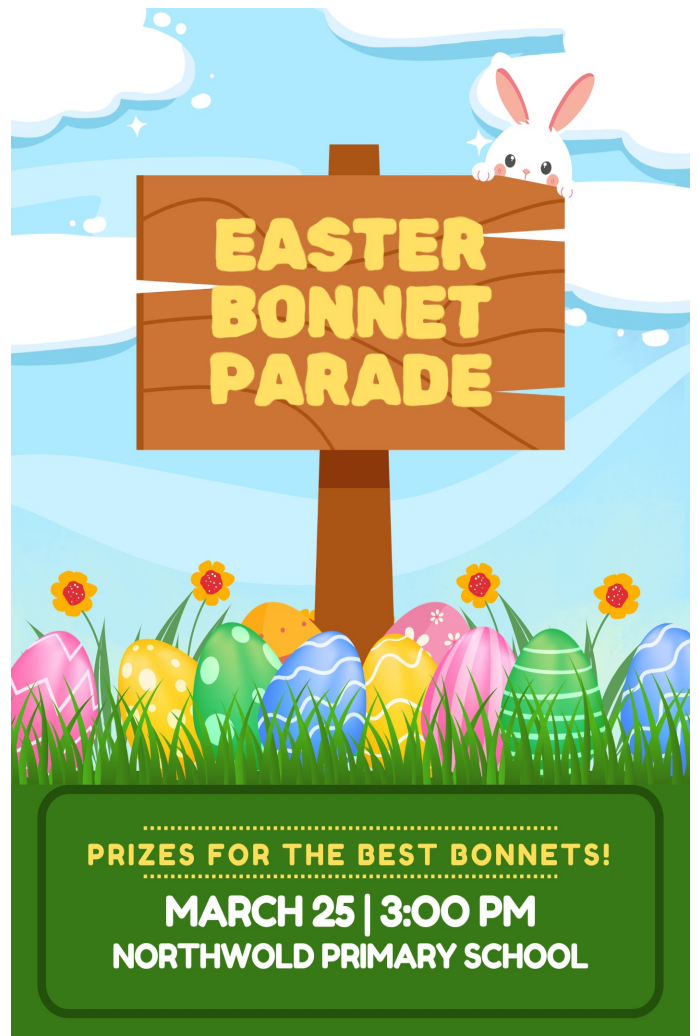
18th Nursery/Reception Sports Day

20th Sports Day

21st Parent Council 9-10am

Please check the calendar on our website

<https://www.northwoldschool.com/>



Northwold Got Talent

A huge congratulations to all our amazing performers! Your confidence, creativity and talent truly shone on stage.

LOWER PHASE WINNERS

First Place—Amira, Epherata, Yordanus, Alicja, Grace, Year 3 Teak

Second Place—Murphy, Year 2 Pine

Third Place—Sophia and Nikhat, Year 3 Elder

UPPER PHASE WINNERS

First Place—Trinity and Michelle, Year 6 Maple

Joint Second Place—Maliaka, Year 4 Hawthorn
Alexis – Year 5 Hazel

Third Place—Aafiya, Year 4 Cedar

Well done to everyone who took part ; you made the event unforgettable!

We can't wait to see even more talent next year!

School Term dates 2025 -2026

Spring Term: (55 days)

- Monday 5th January 2026 to Friday 27th March 2026.
- Monday 5th January 2026 INSET day
- Half term holiday Monday 16th February 2026 to Friday 20th February 2026.
- Easter holiday Monday 30th March 2026 to Friday 10th April 2026.

Summer Term: (65 days)

- Monday 13th April 2026 to Monday 20th July 2026
- Monday 13th April 2026 INSET day
- Half term holiday Monday 25th May 2026 to Friday 29th May 2026
- Summer holiday Tuesday 21st July

Public holidays

- Friday 3 April 2026 (Good Friday)
- Monday 6 April 2026 (Easter Monday)
- Monday 4 May 2026
- Monday 25 May 2026
- Monday 31 August 2026

Holidays During Term Time

As we approach the Easter period, we would like to take this opportunity to remind all families of the school's attendance policy regarding holidays during term time.

Time off for holidays is not authorised during term time. Good attendance is essential to ensure children make the best possible progress in their learning, and even short absences can have a significant impact.

Please be aware that if a child is taken out of school for a holiday during term time, this may result in a fixed penalty notice being issued. The current penalty is £80 per parent, per child. If a second penalty notice is issued within a three year period, this may lead to court proceedings.

We kindly ask that all holidays and family trips are arranged outside of term time. Thank you for your continued support in ensuring your child attends school regularly and benefits fully from their education.

School Term dates 2026 -2027

Autumn Term: (73 days)

- Wednesday 2nd September 2026 to Friday 18th December 2026
- Wednesday 2nd September 2026 INSET day
- Thursday 3rd September 2026 INSET day
- Friday 23rd October 2026 INSET day
- Half term holiday Monday 26th October 2026 to Friday 30th October 2026
- Christmas Holiday Monday 21st December 2026 to Friday 1st January 2027

Spring Term: (54 days)

- Monday 4th January 2027 to Thursday 25th March 2027.
- Monday 4th January 2027 INSET day
- Half term holiday Monday 15th February 2027 to Friday 19th February 2027.
- Easter holiday Friday 26th March 2027 to Friday 9th April 2027.

Summer Term: (68 days)

- Monday 12th April 2027 to Thursday 22nd July 2027
- Monday 12th April 2027 INSET day
- Half term holiday Monday 31st May 2027 to Friday 4th June 2027
- Summer holiday Friday 23rd July

Public holidays

- Friday 25th December 2026 (Christmas Day)
- Monday 28th December 2026 (Boxing Day)
- Friday 1st January 2027 (New Year's Day)
- Friday 26th March 2027 (Good Friday)
- Monday 29th March 2027 (Easter Monday)
- Monday 3rd May 2027
- Monday 31st May 2027
- Monday 30th August 2027

Class Attendance W/E 09/03/2026

Well done to **2 Year Old's** with the highest attendance last week. They had 100% attendance.

Class	Attendance %
2 Year Old's	100.0%
N Elm 2	93.8%
RC Ash	98.8%
RC Sycamore	93.8%
Y1 Redwood	98.5%
Y2 Pine	96.0%
Y3 Elder	94.1%
Y3 Teak	88.6%
Y4 Cedar	91.4%
Y4 Hawthorn	96.1%
Y5 Beech	95.4%
Y5 Hazel	89.1%
Y6 Juniper	95.3%
Y6 Maple	96.9%
Grand Total	94.8%

**THE CLASS WITH
THE HIGHEST
ATTENDANCE
WILL WIN A PIZZA
PARTY AT THE
END OF THE
TERM!**



Debating Challenge!

Our Debate Challenge will take place in stages next term. Students will compete to earn a place in the next round, successful teams will then progress to the semi-finals.

Please find the dates below:

Classroom Debate Heats: 14th May

Semi-Finals: 22nd May



School Trips



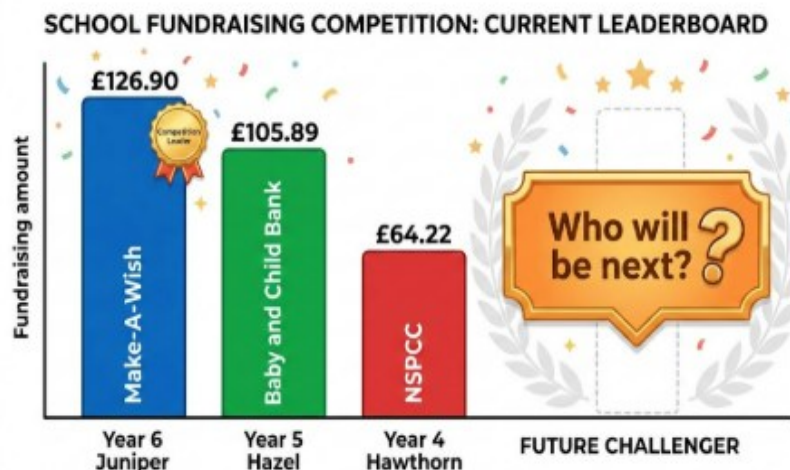
We have lots of exciting trips planned this term.

Please ensure that you have paid for them on MCAS ahead of the date to ensure we are able to go on the trip.

Charity Leads—Making A Difference!

Our Charity leads have already done a phenomenal job raising funds for some incredible causes. Between Pyjama Day, Culture Day, and Number Day, they have raised a total of **£297.01!**

Who is going to take the top spot? Year 6 Juniper has set a very impressive record of £126.90 to beat.



Caught Being Kind

Please find below the names of the children in each year group who are recognised for their kindness this week.

Congratulations!

Nursery	(Elm 1) Shaquarn	(Elm 2) Rabia
Reception	(Sycamore) Talia	(Ash) Logan
Year 1	(Redwood) Divine	
Year 2	(Pine) Idrees	
Year 3	(Elder) Krishaan	(Teak) Israel
Year 4	(Cedar) Sema	(Hawthorn) Alaija-Nae
Year 5	(Beech) Twana	(Hazel) Safiyyah
Year 6	(Juniper) Rafaely	(Maple) Yusuf

What is on the menu next week?

Northwold Primary School Menu – Week 2

	Monday MEAT FREE MONDAY	Tuesday	Wednesday	Thursday	Friday
Meat Choice	Macaroni & Cheese (G, MK)	Chicken Burger with Salad (G, M)	Spaghetti Bolognese (G, MU, SO)	Peri-Peri Chicken (MU)	Cod Fish Fingers Battered Fish (F, G)
Vegetarian Choice	Vegetable Burger (G, V)	Cheese & Onion Pastry (G, V, MK)	Vegetable Curry (V)	Cheese & Egg Flan (G, E, MK)	Jacket Potato with Cheese & Tuna (MK, F)
Alternative Choice	Vegetable Goulash (V)	Fish Curry with Brown Rice (V, F)	Egg Curry (F, G)	Vegetable Biryani with Rice (V)	Mexican Wrap (G, MU)
Sides	Bread Diced Potatoes (G, MK)	Bread New Potatoes (MK, E)	Homemade Bread Brown Rice (G, MK, E)	Bread Potato Wedges (G, MK, E)	Homemade Bread Oven Baked Chips (G, MK, E)
Vegetables	Mixed Vegetables Cauliflower	Sliced Carrots Broccoli	Sweetcorn Garden Peas	Diced Carrots Green Beans	Baked Beans
Dessert Choice	Fruit Jelly Fruit Yogurt Fresh Fruit (MK)	Caramel Tart with Custard Fruit Yogurt Fresh Fruit (MK, G)	Fresh Fruit Salad Fruit Yogurt Fresh Fruit (MK)	Cheese & Biscuits Fruit Yogurt Fresh Fruit (G, MK)	Ice Cream Fruit Yogurt Fresh Fruit (MK)
Dietary Information	Fresh salad served daily - All our meat is Halal V - Vegetarian CE - contains Celery G - contains Gluten F - contains Fish E - Egg SO - contains Soya MK - contains Milk SU - contains Sulphur Dioxide MU - contains Mustard				

SEND CORNER

Autism Support for Parents & Carers

Autism Coffee Mornings—Hackney Ark

Run by Occupational Therapy and Clinical Psychology teams.

- Meet other parents and carers
- Share experiences in a supportive space
- Speak directly with clinicians
- Online and face-to-face sessions available

National Autistic Society (NAS)

Trusted information and guidance for parents, young people and schools.

- Education and EHCP advice
- Local support information

www.autism.org.uk

Ambitious about Autism—Talking Tuesdays

Free webinar series for parents and carers.

- Practical advice
- Expert guidance
- Opportunities to ask questions

ambitiousaboutautism.org.uk (search: Talking Tuesdays)

You are not alone—support and community are available.

Parent Workshop Part 2
at Northwold Primary School

Supporting your Emotional Wellbeing and Your Children's Emotional Wellbeing

When? Wednesday 25th March 2026 from 9-10am

Where? At Northwold Primary School

What is it? A workshop for parents about supporting your emotional wellbeing and your children's emotional wellbeing

Who is delivering the workshop?
Dr. Jodi Cooper, an Educational Psychologist, who is linked to Northwold Primary School

What will happen at the workshop?
To make this as useful and interactive as possible for everyone, this might involve a brief presentation from Dr Cooper, followed by time for parents to discuss any thoughts they have about the workshop or topic.

What will happen after the workshop?
Following the workshop, if you would like to have a follow-up discussion one-to-one with Dr Cooper, this can be arranged for another date. Dr Cooper can tell you more about this at the workshop.

nlewis@northwold.hackney.sch.uk

Sign of the Week

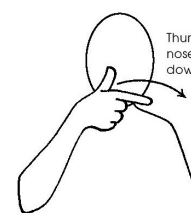
Learning a new sign each week helps everyone in our setting become more confident in using Makaton, making our environment more inclusive and supportive for all children.

You are welcome to practise the sign at home too! We will share the sign each week so you can join in.

If you need anymore information, please feel free to contact Miss Nicola.



Lucky



Thumb lightly touches tip of nose as hand moves slightly downwards across to other side

Lucky

Reception News

Sycamore Class planted radish and cress this week as part of their outdoor provision. The children carefully followed the important steps for planting, including preparing the soil, placing the seeds at the right depth, and gently covering them. They learned that plants need water, light, and warmth to grow, so they made sure to water their seeds and place them in a suitable spot. This activity helped them understand how to care for plants and what is needed for healthy growth.

Reception made muffins last week, and they were super delicious! The children enjoyed measuring, mixing, and watching the ingredients come together to create something tasty.

Cooking in the early years is important because it helps develop key skills such as following instructions, measuring ingredients, and understanding simple maths concepts like quantity and counting. It also supports fine motor skills through actions like stirring and pouring. The children learned about kitchen safety and hygiene, including washing hands and using equipment carefully. Cooking together also encourages teamwork, communication, and confidence, as well as helping children explore new tastes and textures.



Reception Baking Chocolate Chip Muffins!

Both Sycamore and Ash classes enjoyed making and tasting Chocolate Chip Muffins, they were tasty and delicious.



Year 3 DT Lesson

Year 3 pupils enjoyed making fruit salad using a variety of fruits such as apples, mangoes, kiwis, strawberries, blueberries and grapes. They learned about healthy eating, practised safe food preparation and developed cutting skills. The activity also encouraged teamwork and communication, and the children enjoyed tasting their final creations.



Sycamore—Mother's Day Card Making Session

Our pupils had a wonderful time getting creative during our Mother's Day card-making session. With lots of colour, care and imagination, they made beautiful cards to share with the special people in their lives.



World Poetry Day Celebration

Well done to all of our children for their fantastic efforts in performing poems in front of their peers, today, to celebrate World Poetry Day which is on Saturday 21st March. It was wonderful to see such confidence, expression and enthusiasm across all year groups from EYFS to Year 6.

Poetry plays an important role in developing language, creativity and imagination. Reciting poems helps children build confidence, improve speaking skills and bring words to life through expression and performance.

We are very proud of everyone who took part; you truly made poetry come alive!

