

Dear Parent/Carers,

Regular attendance for all children is very important and we want all our pupils to have attendance above 98%. Our whole school attendance for the autumn term is 94.7%. Please ensure that your child is in school every day and that you contact the school if they are unwell. That way we can authorise the absence.

Government guidelines state that parents may not take their children out of school on holiday during term times. Therefore, unfortunately, we are not able to approve holidays taken during the term time. These absences will be marked as unauthorised.

Thank you to all the parents who attended the coffee morning today. It was lovely to see so many of you there. Mr Williams led a very informative session on how parents can keep children safe online. In the current climate, we need to be increasingly aware of the risks that our children face online and it is extremely important that we remain vigilant at all times.

Parent Safe is a very informative website for parents which covers all aspects of online safety:

<https://parentsafe.lgfl.net/>

We have a coffee morning planned Friday for our nursery parents on 23rd January – this meeting will be an opportunity for you to find out about how your children learn in our nursery – with a focus on gross and fine motor skills. We look forward to seeing you there.

The school choir will be going to perform at the O2 in the Young Voices Concert on 20th January. This is an exciting opportunity for the children to perform alongside school from right across London. I am sure they will have a fantastic time. I know that many parents will be joining their children there – we hope you have a fantastic time.

Have a safe and warm weekend.

Kind regards,

Bronwen Chalmers

Headteacher



Diary Dates

January

- 20th Young Voices Concert at the O2
- 23rd Nursery Parents Coffee Morning
- 23th Year 5 Kensington Palace
- 28th Year 3 British Museum
- 30th Literacy Coffee Morning
- 30th Interschool Choir competition

February

- 2nd This week we start the one page profile meetings between teachers and parents.
- 4th Bring your parent to school morning. Y1 and Y3. 9:00-10:00am. Parents invited to join their children to take part in learning.
- 5th Parent council. 9:00—10:00am Outcomes in Art, Computing and PE.
- 6th Nursery parent coffee morning.
- 9th One page Profile meetings with Teachers & Parents Years 4, 5 & 6
- 13th Autism/SEND coffee morning 9:00—10:00am . Parents of Autistic/SEND children are welcome to meet the team.
- 16th Half Term

Please check the calendar on our website

School Trips

We have lots of exciting trips planned this term.

Please ensure that you have paid for them on MCAS ahead of the date to ensure we are able to go on the trip.

Attendance

We are pleased to introduce a new incentive aimed at encouraging excellent attendance and celebrating our pupils' commitment to learning. Regular attendance plays a vital role in a child's academic progress, confidence, and overall school experience. To recognise and reward students who make a strong effort to attend school consistently, we will be awarding attendance badges based on the following criteria:

Gold Badge – 100% attendance

Silver Badge – 99% attendance

Bronze Badge – 98% attendance


These badges will be presented to children termly to acknowledge their achievement and promote attendance across the school. We understand that absences due to illness or unforeseen circumstances can occur, and we appreciate your continued support in ensuring your child attends school whenever possible. Thank you for working with us to support your child's education.

MEASLES

The school Nursing Team has been informed that there has been a rise in cases of measles in Hackney. Please see attached the information for schools regarding measles; if there are more than two cases in one class then this needs to be reported to public health.

Please do not hesitate to reach out if any support is required.

<https://www.nhs.uk/conditions/measles/>



Measles

Measles is a serious disease caused by a very infectious virus. It can be dangerous, especially for babies, young children and pregnant women.

Catching measles

Measles spreads easily when an infected person breathes, coughs or sneezes.

The virus can stay in the air and on surfaces for up to 2 hours. You can catch measles just by being in a room where an infected person has been, even up to 2 hours after they have left.

A person with measles can spread the infection in the 4 days before they get the rash until 4 days after the rash appears.

Symptoms of measles

rash fever loss of appetite sore, red eyes cough

Other early symptoms include sneezing and a runny or blocked nose. A person with measles will feel very unwell. They will have to spend about five days in bed and will be off school or work for around 2 weeks. There is no treatment or cure for measles.

If you think you might have measles, it's important to call your GP surgery. You will need to stay away from other people to avoid spreading the disease.

Possible complications

hearing loss blindness pneumonia encephalitis brain damage death

If you get measles when you're pregnant, it could harm your baby. It can cause miscarriage or stillbirth, premature birth, or your baby having a low birthweight.

The measles virus also attacks your immune system, destroying the special white blood cells that react quickly to fight infections you have already had. This means that people who have had measles are more likely to catch other diseases, even ones they have had before. This effect can last up to 3 years after recovering from measles.

Measles in numbers

9 out of 10 unvaccinated people will catch measles if they come into contact with an infected person.

1 in 5 people with measles will be admitted to hospital.

1 in 15 children with measles will get one or more complications.

1 in 5,000 people with measles is likely to die.


Preventing measles

MMR vaccination is the only way to prevent measles. Everyone needs two doses, ideally given at 1 year old and at 3 years 4 months old. The MMR vaccine also protects against mumps and rubella.

The MMR vaccine works very well. After 2 doses, 99% of people will be protected against measles.


The vaccine is free for everyone. If you or your child missed a dose, contact your GP surgery to catch up. You are never too old to have the vaccine.

More about measles




(nhs.uk)

More about the MMR vaccine



(nhs.uk)

Measles case numbers



(gov.uk)

This is not a diagnostic tool. If you think your child might have measles, call your GP surgery or 111 right away.
Developed by NHS North Central London Integrated Care Board.

School Term dates 2026 -2027

Autumn Term: (73 days)

- Wednesday 2nd September 2026 to Friday 18th December 2026
- Wednesday 2nd September 2026 INSET day
- Thursday 3rd September 2026 INSET day
- Friday 23rd October 2026 INSET day
- Half term holiday Monday 26th October 2026 to Friday 30th October 2026
- Christmas Holiday Monday 21st December 2026 to Friday 1st January 2027

Spring Term: (54 days)

- Monday 4th January 2027 to Thursday 25th March 2027.
- Monday 4th January 2027 INSET day
- Half term holiday Monday 15th February 2027 to Friday 19th February 2027.
- Easter holiday Friday 26th March 2027 to Friday 9th April 2027.

Summer Term: (68 days)

- Monday 12th April 2027 to Thursday 22nd July 2027
- Monday 12th April 2027 INSET day
- Half term holiday Monday 31st May 2027 to Friday 4th June 2027
- Summer holiday Friday 23rd July

Public holidays

- Friday 25th December 2026 (Christmas Day)
- Monday 28th December 2026 (Boxing Day)
- Friday 1st January 2027 (New Year's Day)
- Friday 26th March 2027 (Good Friday)
- Monday 29th March 2027 (Easter Monday)
- Monday 3rd May 2027
- Monday 31st May 2027
- Monday 30th August 2027

Class Attendance W/E 1/12/2025

Well done to **Year 1 Redwood** with the highest attendance last week. They had **98.86%** attendance.

Class	Attendance %
2 Year Old's	97.22%
N Elm 2	81.30%
RC Ash	82.50%
RC Sycamore	91.88%
Y1 Redwood	98.86%
Y2 Pine	91.06%
Y3 Elder	80.88%
Y3 Teak	88.64%
Y4 Cedar	95.39%
Y4 Hawthorn	86.76%
Y5 Beech	96.25%
Y5 Hazel	93.53%
Y6 Juniper	97.87%
Y6 Maple	96.88%
Grand Total	92.01%

THE CLASS WITH THE HIGHEST ATTENDANCE WILL WIN A PIZZA PARTY AT THE END OF THE TERM!

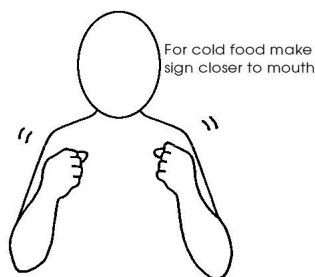
Sign of the Week

Learning a new sign each week helps everyone in our setting become more confident in using Makaton, making our environment more inclusive and supportive for all children.

You are welcome to practise the sign at home



Cold



Cold

School Term dates 2025 -2026

Spring Term: (55 days)

Monday 5th January 2026 to Friday 27th March 2026.

- Monday 5th January 2026 INSET day
- Half term holiday Monday 16th February 2026 to Friday 20th February 2026.
- Easter holiday Monday 30th March 2026 to Friday 10th April 2026.

Summer Term: (65 days)

Monday 13th April 2026 to Monday 20th July 2026

- Monday 13th April 2026 INSET day
- Half term holiday Monday 25th May 2026 to Friday 29th May 2026
- Summer holiday Tuesday 21st July

Public holidays

- Friday 3 April 2026 (Good Friday)
- Monday 6 April 2026 (Easter Monday)
- Monday 4 May 2026
- Monday 25 May 2026
- Monday 31 August 2026

Nursery Coffee Morning

23rd January—Lower Hall

Please join us to learn about how you can support your child's gross and fine motor skill devel-



Caught Being Kind

Please find below the names of the children in each year group who are recognised for their kindness this week.

Nursery	(Elm 1) Rose	(Elm 2) Nevaeh
Reception	(Sycamore) Artemis	(Ash) Amar
Year 1	(Redwood) Efehan	
Year 2	(Pine) Adnan	
Year 3	(Elder) Khaalid	(Teak) Amira
Year 4	(Cedar) Kitty	(Hawthorn) Mariyam
Year 5	(Beech) Annabella	(Hazel) Shawn
Year 6	(Juniper) Cornelius	(Maple) Waliullah

What is on the menu next week?

Northwold Primary School Menu – Week 4

	Monday MEAT FREE MONDAY	Tuesday	Wednesday	Thursday	Friday
Meat Choice	Pasta in Tomato Sauce (G, V)	Peri-peri Chicken (G)	Lamb Tagine (G, MU)	Roast Chicken with Gravy (G, MU)	Cod Fish Fingers Battered Cod Fingers (F)
Vegetarian Choice	Falafel Wrap (V)	Cheese & Potato Whirls (G, V, MU, E, MK)	Vegetarian Sausage Roll (G, V)	Vegetable slices (G, MK, MU)	Jacket Potato with Cheese & Baked Beans (MK)
Alternative Choice	Lentil Dhal Curry with Naan (V, G, MK)	Cod Fish Cakes (F, G)	Spinach & Chickpea Curry (V)	Vegetable Spring Roll (GF)	Cheese & Egg Flan (G, E, MK)
Sides	Bread Naan Bread (G, MK, E)	Bread Diced Potatoes (G, MK)	Homemade Bread Couscous (G, MK)	Bread Yorkshire Pudding (G, MK)	Homemade Bread Oven Chips (G, MK)
Vegetables	Mixed Vegetables Cauliflower	Sliced Carrots Broccoli	Sweetcorn Garden Peas	Julienne Carrots Green Cabbage	Baked Beans
Dessert Choice	Fruit Jelly Fruit Yogurt Fresh Fruit (MK)	Apple Crumble with Custard Fruit Yogurt Fresh Fruit (MK)	Fresh Fruit Salad Fruit Yogurt Fresh Fruit (MK)	Cheese & Biscuits Fruit Yogurt Fresh Fruit (G, MK)	Ice Cream Fruit Yogurt Fresh Fruit (MK)
Dietary Information	Fresh salad served daily - All our meat is Halal V - Vegetarian CE - contains Celery G - contains Gluten F - contains Fish E - Egg SO - contains Soya MK - contains Milk SU - contains Sulphur Dioxide MU - contains Mustard				

English Language Fair
Hackney

Thursday
22nd January
10:30am-1pm

Homerton Library
Homerton High St
E9 6AS

**English not
your first
language?**

Meet
organisations
&
find the right
course for you

Come and find out
about
English classes
and other
opportunities
in the local area!

Register 
<https://forms.gle/iv7F9d2nfHyfWc6u7>
or 



**Hackney Education is inviting you to
the Hackney English Language Fair.**

Thursday, 22nd January, from 10:30 - 1 p.m.
Homerton Library
Homerton High Street
E9 6AS.

REGISTER:

<https://forms.gle/WX7DNjFRrQhZbM96>

There will be different providers:

ESOL English classes,
Adult education,
Employability support,
Volunteer opportunities,
Health and wellbeing,
and advice.

**Come and speak to all providers in one place,
and find a suitable class/opportunity!**

FUNDRAISING

We are supporting our local area and raising as much as possible for local food banks and soup kitchens.

We would be grateful for any donations that parents are able to contribute.

Please bring in any food items that you can—the charity leads will be collecting contributions to this very worthy cause at the school gate each Tuesday this half term. Donations will be accepted up to February half term, and then distributed.

We will keep you informed on which food banks and soup kitchens the charity leaders decide to send your donations to.



***** FINAL REMINDER*****

RECEPTION PLACES 2026 - 2027

Nursery parents should have made their application for a Reception place by yesterday 15th January.

If no application was made before the deadline, your child's application will be late and will be considered after all the 'on time' applications have been dealt with. Late applicants are also less likely to get a place at their preferred school.

If you would like support with this, please contact the school office, who will be happy to help you.

Nursery Spaces Available

Apply Now!

We still have spaces in Nursery for 2 and 3 - year old children. Part time or full-time applications are welcomed. Please contact the school office or email office@northwold.hackney.sch.uk for further information.

Year6 Trip- London Central Mosque

Students recently visited London Central Mosque as part of their learning about architecture in the Muslim religion. The visit gave pupils the opportunity to explore how Islamic beliefs are reflected in the design and structure of a mosque. They observed key architectural features such as the large dome and minaret, symmetric patterns, geometric patterns and the use of Arabic calligraphy.



Year 5 Trip - Neasdon Temple

Year 5 thoroughly enjoyed their trip to Neasden Temple, gaining deeper understanding of the Hindu religion and learning about the Gurdwara through engaging activities and thoughtful discussions together.

