

**1000 SERIES**

## ***DESKTOP WINDER***



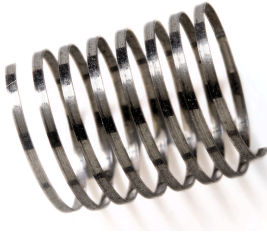
***IT'S SLEEK, SIMPLE, AND AFFORDABLE.***

We made this one budget friendly. It is lightweight, portable, and comes in various lengths. It runs the same EasyWind(TM) software while only requiring a standard household power to operate.

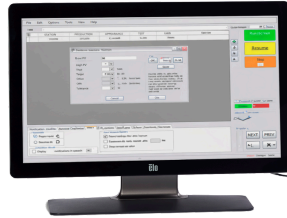
The software features multi-segment, multi-speed, and multi-pitch operation, allowing you to create recipes useful for your wire size and material type.

## 1000 SERIES

### DESKTOP WINDER



Portable to move with handles on the ends



Operates on our Easywind Software



This model is great for R&D labs with the ease of coil creation

## STANDARD SPECIFICATIONS

- Chuck sizes: 1/16", 1/8"
- Wire tensioning: Magnetic
- Arbor tensioning: Spring Tension
- Power requirements: 120 Volts
- Pneumatic requirements: none
- Winding speed max: 1000 rpm
- Chuck to Chuck: 30" /Dimensions:56" x 18" x 18.5"
- Chuck to Chuck: 48" /Dimensions:74" x 18" x 18.5"
- Chuck to Chuck: 65" /Dimensions: 91" x 18" x 18.5"
- Manual jog controller: Pendant with joystick with all axis
- Controller type: CNC multi-axis servo controller
- Operating System: Microsoft Windows 10
- Operating Software: EasyWind™

## MORE COIL WINDER MODELS



**2000 SERIES RE-SPOOLER**

QUICK & PRACTICAL WIRE TRANSFERS



**4000 SERIES MANUAL COIL WINDER**

OUR MOST POPULAR COIL WINDER



**4500 SERIES MINI-WINDER**

SMALL FOOTPRINT COIL WINDING



**4800 SERIES BUNK BED WINDER**

SPACE SAVING STACKED COIL WINDERS



**5000 SERIES AUTOMATIC WINDER**

FULL CYCLE COIL WINDING AUTOMATION



**6000 SERIES SIDE WINDER**

DIRECT TO MANDREL DIAMETER COILING



**8000 SERIES MULTI-FILAR WINDER**

WIND MULTIPLE WIRES AT THE SAME TIME



/ROTHGREAVES

**CONNECT OR CONTACT US**

1-952-404-2604

REQUEST@ROTHGREAVES.COM

2430 W INDUSTRIAL BLVD  
LONG LAKE, MN 55356