



Certified Material Supplier

Centralized Procurement | On site union & non-union labor
Commercial Useful function | Logistics | Trailers

Certified Material Supplier: SBE | DBE | MBE

I About

AD Construction Equipment, Inc. (AD) is a certified regular dealer SBE, DBE, and MBE company that specializes in the procurement and sale of construction materials, equipment, and products to both general and subcontractors. As a signatory to local labor unions, we provide various skilled workers, including journeyman, material hoists, crane operators, and general labor, including procurement personnel. AD also provides a Commercial Useful Function. We also offer warehousing services on request.

Our product range includes a diverse selection of items such as chillers, air handling units, switchgear, generators, lighting packages, pipes, ready-mix concrete, and both union and non-union on-site labor. Additionally, we provide a wide range of other materials and services, including material hoists, fireproofing equipment, lumber, trailers, and more.

AD is a value-added regular dealer that actively manages all stages of project lifecycles from conception to completion, providing hands-on services such as estimates, billing, and material tracking, distinguishing itself from brokers or pass-through companies. From quotes to the worksite, we've got you covered.



\$10M

Bonding Capacity



\$8M

Liability Insurance



| Commercial Useful Function

Procurement Personnel CUF Responsibilities



Preparation
of material
quotes



Solicitation
of bids from
vendors



Evaluate
Bids



Negotiate
with selected
vendors



Prepare
vendor purchase
orders



Pay
Applications



Submittals



Change
orders

Warehouse Personnel CUF Responsibilities



Receive,
manage and track
inventory



Disburse
materials to various
locations



Review
vendor
warranties



Resolve
issues with
vendors



Prepare
monthly reports



Contract
maintenance



Verified by Metro & Ferguson

Commercial Useful Function & Procurement Process



I Certifications

Download Certifications at: www.adcprocurement.com/certifications



DBE

Disadvantage
Business Enterprise

Certifying Agency: Metro



MBE

Minority Business
Enterprise

Certifying Agency: Supplier Clearinghouse



SP-PW

Small Business
Public Works

Certifying Agency: Metro



SBE

Small Business
Enterprise

Certifying Agency: DGS

NAICS

Description

561320

Temporary Help Services

423610

Electrical Apparatus & Equipment, wiring Supplies, and Related Equipment Merchant Wholesalers

423320

Brick, Stone, and Related Construction Material Merchant Wholesalers

423510

Metal Service Centers and other Metal Merchant Wholesalers

423720

Plumbing and Heating Equipment and Supplies (Hydronics) Merchant Wholesalers

423730

Warm Air Heating and Air-Conditioning Equipment and Suppliers Merchant Wholesalers

531120

Lessors of Non-Residential Buildings (Except Mini Warehouses)

I Material Supplier On Site Labor

✓ Built to Procure!

www.adcprocurement.com

Our product range includes:

- ✓ Trailers
- ✓ Steel
- ✓ Transformers
- ✓ Lumber
- ✓ Concrete/pre-cast materials
- ✓ Miscellaneous metals
- ✓ Switch gear/switches
- ✓ Electrical materials, supplies & equipment
- ✓ HVAC materials, supplies & equipment
- ✓ Chillers
- ✓ Centrifugal pumps
- ✓ Conduits, connectors, couplings
- ✓ Electrical connectors and materials
- ✓ Generators
- ✓ Miscellaneous tools, hardware, hoses
- ✓ Pipes, fittings
- ✓ Power tools
- ✓ Safety equipment and tools
- ✓ Tubing and valves
- ✓ Welding equipment
- ✓ Material handling equipment



I Current Project

Hollywood Burbank Airport

Elevate Bur Replacement Passenger Terminal

Clients:

- ✓ CSI Electrical Contractors
- ✓ Blois Construction, Inc.
- ✓ ISEC, Inc.
- ✓ ACCO
- ✓ XL Fire

Vendors:

- ✓ A&N Welding
- ✓ Allied Plumbing & Fire Supply
- ✓ Chikato Bros. Ice
- ✓ Coast to Coast, Inc
- ✓ Ferguson
- ✓ Ferguson Waterworks
- ✓ Fish Construction, Inc.
- ✓ Gordon, Inc.
- ✓ H&E Equipment
- ✓ Main Electric
- ✓ Majestic Steel
- ✓ Mobile Modular
- ✓ Pinnacle industrial Supply
- ✓ RED-D-ARC (Airgas)
- ✓ Sunbelt Rentals
- ✓ SW Mobile Storage
- ✓ Trespa
- ✓ United Rentals
- ✓ Viking Supply Net

I On Site Union Labor

AD is a signatory to local labor unions. We provide various skilled workers, including journeyman, material hoists, crane operators, and general labor, including procurement personnel. With AD, the procurement process is streamlined because all purchase orders, invoices, and accounting reconciliation are handled by a single source.

All of AD's fixed hourly rates and union rates are based on prevailing labor rates, as per the following guidelines:

UAW 250 Master Agreement - Pipefitters

**International Association of Sheet Metal
-Air-Rail-Transportation Workers Agreement**



AD Construction Equipment, Inc.

DBE MBE SBE PW-SB

AD Construction Equipment, Inc. (AD) is a certified SBE, DBE, and MBE regular dealer specializing in the procurement and sale of construction materials, equipment, and products. We proudly serve both general contractors and subcontractors across a wide range of projects. AD can also provide on-site temporary offices tailored to meet any complexity. Currently, AD is providing temporary office services at the Burbank Replacement Terminal project.

In addition to its products and services, ranging from mechanical, electrical, and plumbing materials to concrete, industrial parts, and construction equipment, AD's high-quality products and skilled, experienced labor personnel deliver exceptional results. AD also offers a comprehensive range of onsite logistics and security services.

Our Approach

We firmly believe that an organized construction site office complex enhances efficiency and productivity for all involved. Therefore, AD collaborates closely with its vendor partners to provide customers with the necessary logistics to meet their specific requirements.

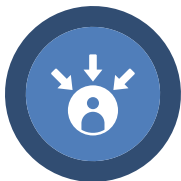
To fulfill our customers' temporary office needs and requirements, AD adheres to the following principles and practices:



Offer the best available products and pricing.



Consider time requirements for delivery and setup.



Meet customer needs and requirements



Prioritize eco-friendliness and security.



Ensure cost-effectiveness and affordability.



Maintain high-quality standards.



AD can provide a turnkey solution to meet your temporary office needs or customize them to suit your specific requirements. We collaborate with our partners to expedite the setup process without compromising customer needs or requirements.

AD has successfully assisted clients with the following office trailer requirements:

- ✓ Determine the floor plan with the client.
- ✓ Logistics delivery and pick-up services are available.
- ✓ Trailer furnishings are available for rent.
- ✓ Breakroom/Kitchen appliances (rental) are available.
- ✓ Conference room furnishings are available.
- ✓ Special IT wiring and internet services are available for rent.
- ✓ Office equipment as required is available for rent.
- ✓ Heating/AC maintenance programs are available.
- ✓ Dedicated restroom trailers or self-contained restrooms within individual trailers
- ✓ Special build-out requirements.
- ✓ Rental terms and conditions.
- ✓ ADA compliance
- ✓ Office furnishings (rental) are available.
- ✓ Workstations
- ✓ Cubicles
- ✓ Entrance systems
- ✓ Storage is available.



Trailer types:



Single-wide trailers



Double-wide trailers



Triple-wide trailers



Special trailers for conference rooms



Trailer campuses

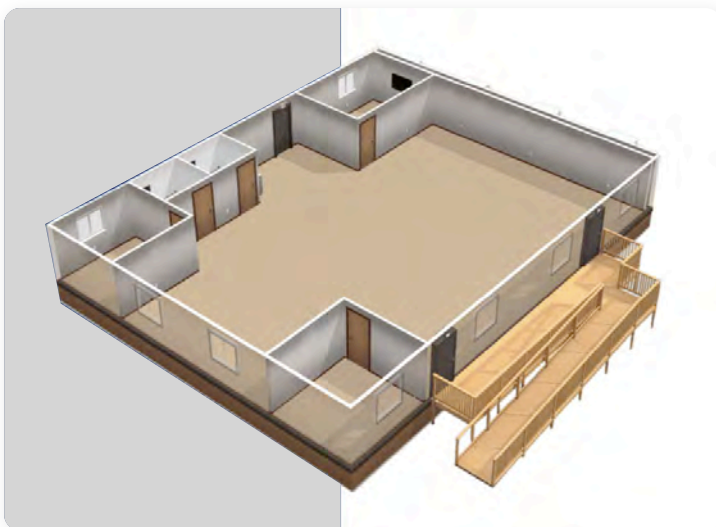
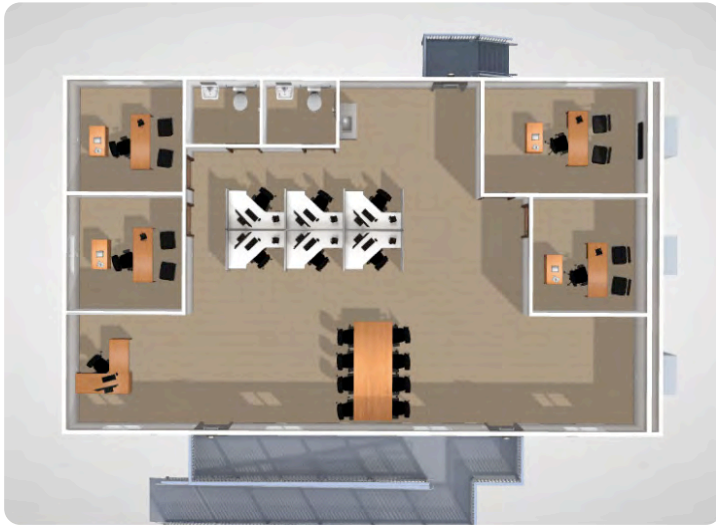


Decking connecting all trailers within a campus setting

Our mission is to provide exceptional procurement, on-site temporary offices, and labor services through teamwork, professionalism, and a commitment to safety and customer satisfaction. We encourage every team member to take initiative, be accountable, and go the extra mile in all tasks. By aligning our actions with the Company's values, we maintain a reputation for excellence and reliability that sets us apart in the industry.

If you have any questions, please feel free to contact **Andrew Dillard at your convenience. You can reach Andrew by email at **drew@adcprocurement.com** or by phone at **(310) 429-6387**.**

We are available at any time to have a follow-up conversation. Thank you for considering AD as your procurement partner.



| Warehouse Space



✓ **Built to Deliver. Space.**

CONTACT US



Drew Dillard

(310) 429-6387

drew@adcprocurement.com



Office & Warehouse

1715 West 130th Street, Unit F

Gardena, CA 90249



Billing & Mailing

PO Box 47

Gardena, CA 90248

Accounting Department: accounting@adcprocurement.com