

[View this email in your browser](#)

Greg Silva

September is the month for Monarch migration in eastern Oklahoma! Keep a look out for these beautiful butterflies as they start fluttering south to Mexico. You can see many other butterflies at Oxley Nature Center as well as monarchs. Can you identify any of the butterflies pictured below?

.....

### Do you know these butterflies?



.....



# 7th Annual Monarchs

## ON THE MOUNTAIN

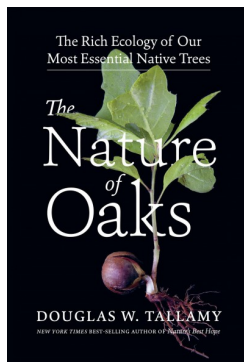
### 2022 MIGRATION CELEBRATION

*Celebrating Eastern Oklahoma's  
vital role in the amazing  
Monarch butterfly migration!*

## SAVE THE DATE

Saturday, September 17  
9 a.m. - 1 p.m.

## SPONSORED BY

**Book Review Corner**(from the *All About Nature Oxley Book Group*)The Nature of Oaks, Douglas W. Tallamy*This was our inaugural selection, and what a way to start!*

Tallamy describes the "diverse web of life associated with oaks" and invites readers to join him in adding one or more oak trees to their own landscapes. I was amazed by all the myriad connections and the wide variety of ecological services oaks provide. As an entomologist, Tallamy focuses on the great diversity of insects that depend on oaks for food and shelter and how the insects then provide food for other animals, particularly birds, but he also explains how oaks play other roles such as carbon sequestration and watershed management. I have planted all kinds of natives in my yard including several species of oaks. Before reading this book, I considered myself fairly knowledgeable about how to make my yard wildlife friendly. However, *The Nature of Oaks* showed me multiple ways to change my management regime to help oak trees help the birds. It also made me think I have room for one or two more oak trees. Now where is that plant catalogue?

## Mary K. Oxley Nature Center - September Programs

Call 918-596-9054 for information or to register for programs (please register 48 hours in advance).

Closed Monday, September 5 for Labor Day

September 3rd  
Saturday Morning Birding

Who: All ages welcome  
Join us for birding at Oxley. All skill levels are welcome. Bring binoculars if you have them.

September 10th  
Harvest Moon Walk  
When: 7:00-8:30 p.m.  
Cost: \$3 members, \$5 non-members.  
Who: All ages welcome. Registration required  
This moon nearest the autumnal equinox (September 22) is named for the gathering of crops. It is a time of preparation for the winter months to follow. Let's explore the trails and see what we can discover! Dress for the weather and wear sturdy shoes.

September 17th  
Butterfly Explorations  
When: 9:30- 11:00 a.m.  
Cost: Free! Registration not required  
Who: All ages welcome  
Join us for our butterfly walk. Depending on the weather, we may see some tropical migrants moving through the Northern end of their range. Bring binoculars if you have them. All skill levels are welcome.

September 18h  
National Cleanup Day  
When: 1:00-3:00pm  
Who: Any age that can use a grabber tool  
Join us for a special Oxley cleanup day around Lake Sherry. So much trash makes its way into our water. Every bit that we can clean makes an impact on our local waterways and anywhere the water flows. <https://www.signupgenius.com/go/805044aa8ab2ca4f49-national>

September 23rd  
All About Nature Book Club  
When: 11:00 a.m.- 12:30 p.m.  
Cost: Free! Registration required  
Who: Adults  
Join us for a discussion of books related to nature, conservation, and the environment followed by a BYO lunch. September's selection: [Entangled Life: How Fungi Make Our Worlds, Change Our Minds & Shape Our Futures](#) by Merlin Sheldrake. Please bring your own book.

September 23  
North American Butterfly Association Count  
Who: All ages  
Cost: ONCA members free  
Non-members \$3.00  
We will meet in the Oxley Center parking lot at 8:30, break for lunch and count again in the afternoon until around 4:00. Bring a sack lunch and binoculars if you have them. Dress for the field and bring water.

September 24th  
Wildflower Walk  
When: 10:30 a.m.- noon  
Cost: Free! Registration not required  
Plants are reviving with the cooler weather. Let's see if the wildflowers are more abundant.



Oxley Nature Center Hours

Closed Monday, September 5 for Labor Day  
  
Park in the Oxley parking lot from 8:00 a.m.to 5 p.m. or outside the gray stone gate from 5-9 p.m.

