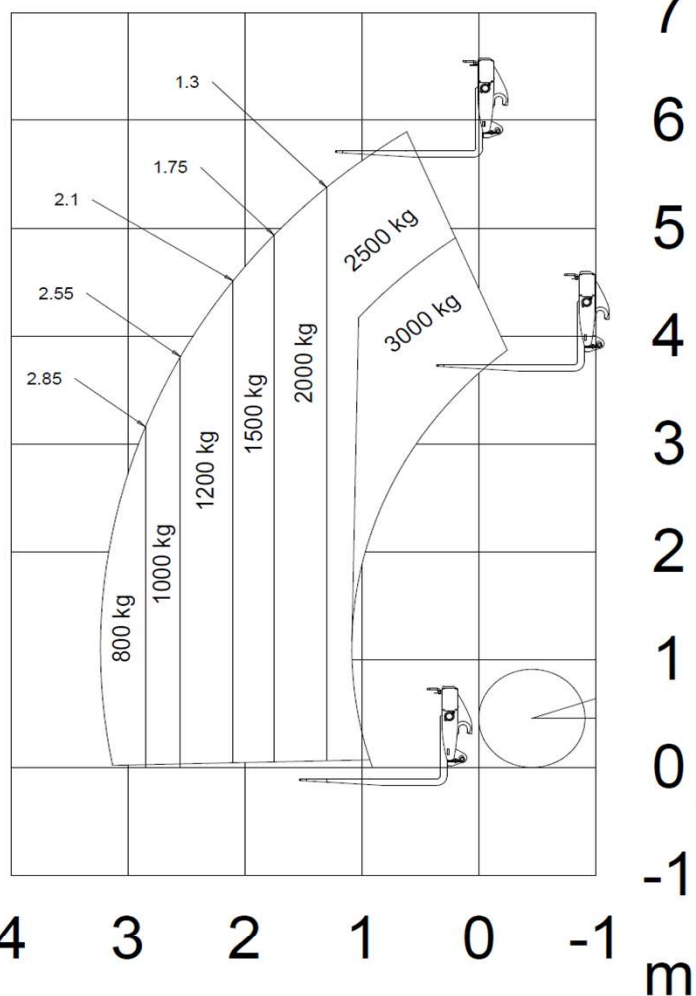


# TH

# 3.6

**PRELIMINARY**

## Load chart on tyres



7

6

5

4

3

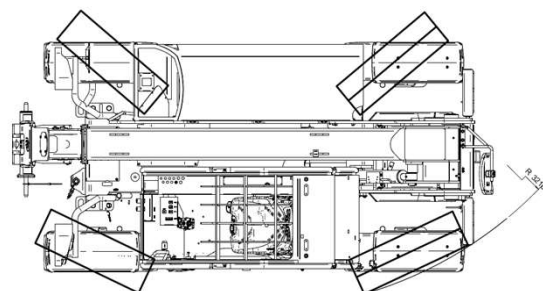
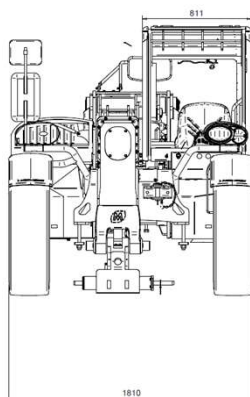
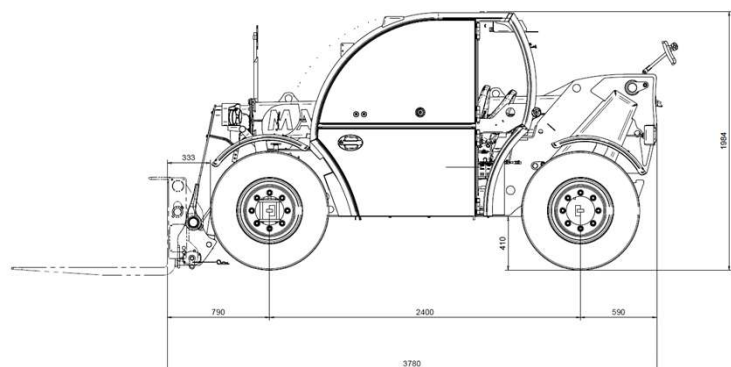
2

1

0

-1

m



# TH 3.6

PRELIMINARY

<b>Machine model</b>	Telescopic handler	TH 3.6
	Maximum lifting capacity	3.000 kg / 6,600 lbs
	Maximum lifting height	5,87 m / 19' 3"
	Maximum reach	3,14 m / 10' 3"
<b>Engine</b>	Type	<b>Deutz TD 2,9 L4 Stage IIIA / V</b>
	Rated Power	55,4 kW (75 hp)
	Maximum torque	310 Nm @ 1,400 rpm
	Displacement	2,9 l
	Cylinders	4
	Automatic radiator cleaning	Standard
<b>Transmission</b>	Type	Hydrostatic
	Gearbox	1 speed forward-reverse
<b>Brakes and Tyres</b>	Service brake	Wet multi-disk brakes on front axle
	Parking brake	Front + Automatic
	Tyre sizes	300/75 R18
<b>Performance</b>	Max. travel speed	35 km/h
	Drawbar pull	39 kN
	Traction	4WD
<b>Weight &amp; Dimensions</b>	Total weight unladen	5,000 kg / 11,023 lbs
	Ground clearance	410 mm / 16"
	Wheelbase	2400 mm / 7' 10"
	Width	1800 mm / 5' 10"
	Cab width	811 mm / 2' 9"
	Height	1980 mm / 6' 6"
	Lenght (with fork carriage)	4980 mm / 16' 4"
	Tilting back	12°
	Tilting forward	118°
<b>Hydraulic circuit for movements</b>	Circuit type	Gears
	Max. hydraulic capacity	89 l/min
	Max. working pressure	255 bar
<b>Tank and system capacities</b>	Hydraulic fluid	90 l / 24 US gal
	Diesel fuel tank	67 l / 17.7 US gal