

# HTH

## 16.10

The HTH 16.10 telescopic handler is ideal for moving large, bulky loads in complete safety. Able to lift up to 16 tonnes, it is compatible with a wide range of accessories, making it extremely versatile. Equipped with an RFID system which provides automatic recognition of the various attachments used, this telescopic handler is able to meet a wide range of applications in heavy industry. Its four-wheel drive system, three manoeuvring modes and high ground clearance makes it highly manoeuvrable on all terrains.



### MAIN SECTORS



HEAVY  
INDUSTRY



HEAVY  
LOGISTICS



MINING &  
QUARRING

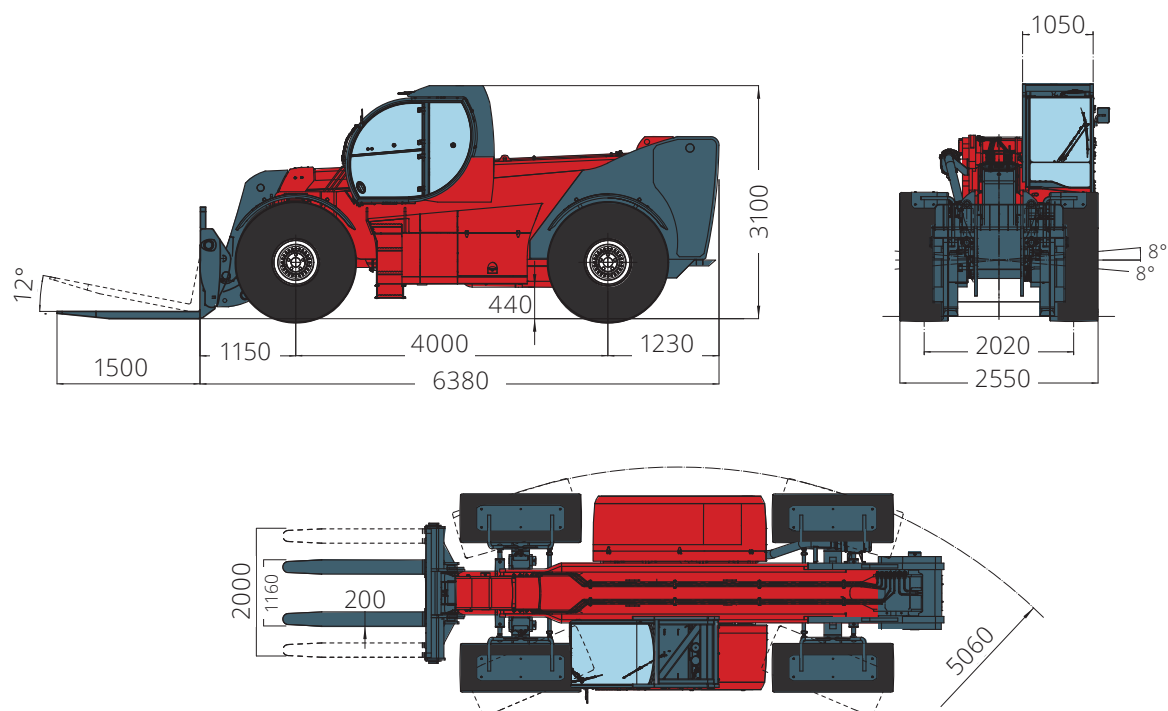


SPECIAL  
PROJECTS

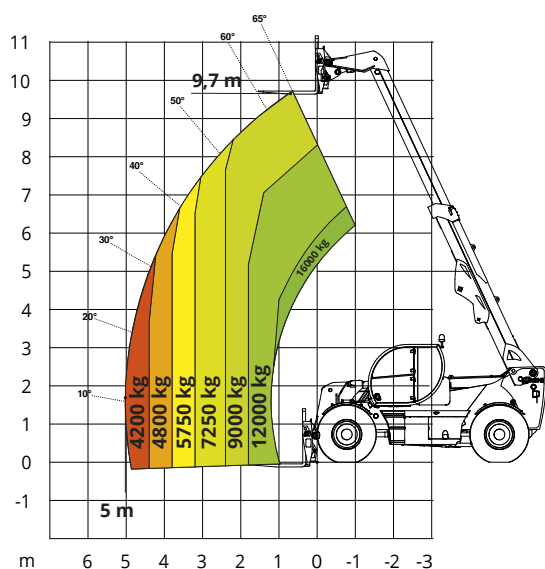
# HTH 16.10

<b>Machine model</b>	Maximum lifting capacity	16,000 kg
	Load center	600 mm
	Maximum lifting height	9.70 m
	Maximum reach	5.00 m
<b>Engine</b>	Type	Deutz TCD 3,6 L4 - Stage V Deutz TCD 3,6 L4 - Stage IV Deutz TCD 3,6 L4 EDG - Stage IIIA
	Rated power	100 kW (136 hp) @ 2,200 rpm
	Maximum torque	500 Nm @ 1,600 rpm
	Displacement	3.6 l
	Cylinders	4 in line
	Engine configuration	Turbocharged direct injection diesel
	Cooling system	Water - intercooler
	FOPS-ROPS tested hermetic cab with protectors	•
<b>Cab</b>	Front, rear and upper wiper	•
	Headlights for road circulation, flashing beacon	•
	Rear view mirrors	•
	Heating - Air conditioning	•
<b>Controls</b>	Multi-function electro proportional joystick	•
	Heavy Duty with epicyclic reduction	•
	One steering cylinders each axle	•
	Levelling correction front axle	+ 8° on the right and + 8° on the left
<b>Axles and brakes</b>	3 types of steering	- with front steering - with round steer - with crab steering
	Tilting rear axle	•
	Hydraulic servo-assisted multidisc brake in oil bath on both axles, with double circuit	•
	Negative parking brake	•
	Tyre size	445/65 - R22,5 ** two each axle, driving and steering
<b>Performance</b>	Max. travel speed	40 km/h
	Drawbar pull	84 kN
	Gradeability	66%
	Turning radius (at wheels)	4,100 mm
<b>Weights</b>	Total unladen	13,100 kg
	Front axle unladen (boom retracted and lowered)	4,600 kg
	Rear axle unladen (boom retracted and lowered)	8,500 kg
<b>Transmission</b>	Hydrostatics	Rexroth / Danfoss
	Variable displacement hydrostatic pump with electronic control	•
	Variable displacement hydrostatic motor	One
	Gearbox	Gearbox with 2 speeds forward / reverse
<b>Hydraulic circuit</b>	Load sensing piston pump	•
	Circuit at 350 bar	•
	Proportional hydraulic electrovalve	Danfoss
	Suction and return line filters	•
	High pressure flexible hoses	•
<b>Tanks capacities</b>	Diesel fuel tank	195 l
	AdBlue*	10 l
	Hydraulic fluid	190 l
	Engine oil	9 l
	Cooliant	20 l
<b>Safety</b>	Electronic safety system which controls the load with definition of the lifted load, radius and comparison with the diagrams stored	•
	Block of aggravating movements of the load	•
	Safety valves on cylinders	•

# HTH 16.10



Load chart  
with forks



Load chart **with tyres clamp**  
**model TC 08.63**

