



MINING &
QUARRYING



HEAVY
LOGISTICS



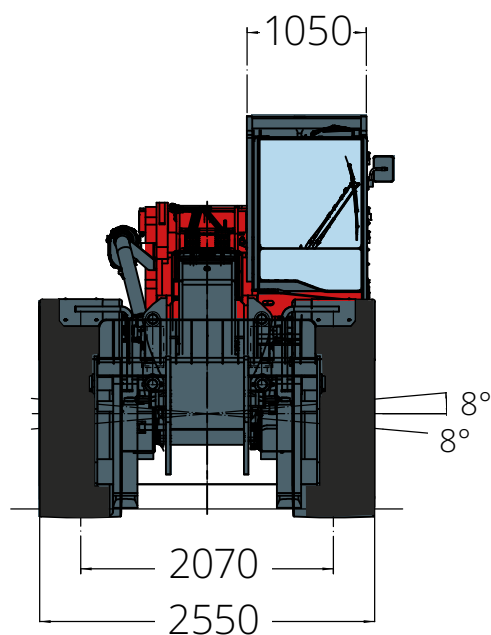
DEFENCE

HTH

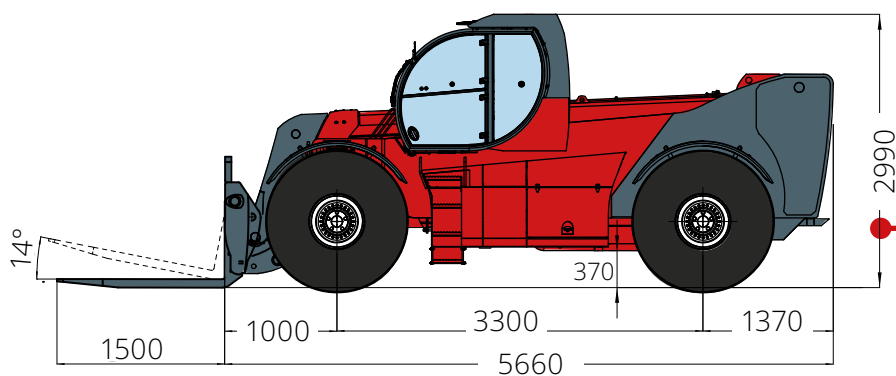
12.10



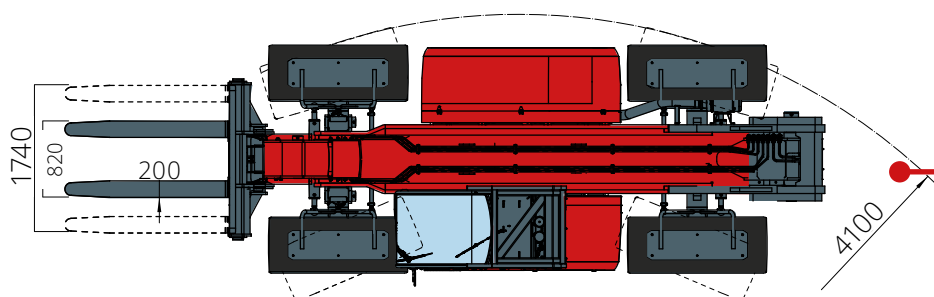
DIMENSIONS (mm)



FRONT
view

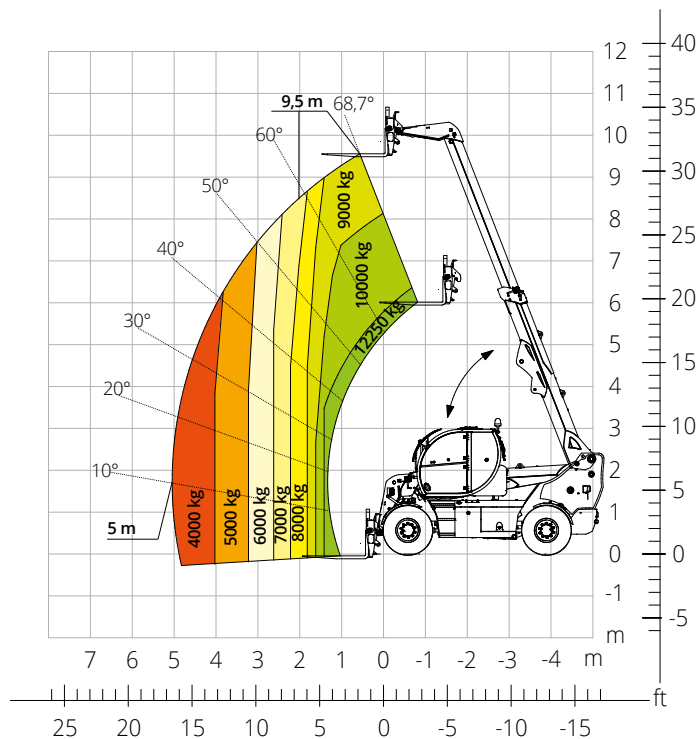


SIDE
view

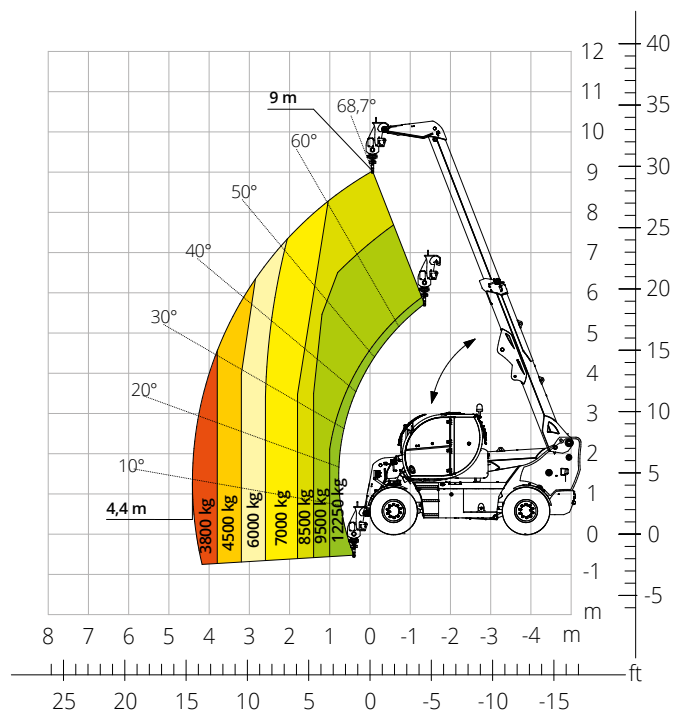


TOP
view

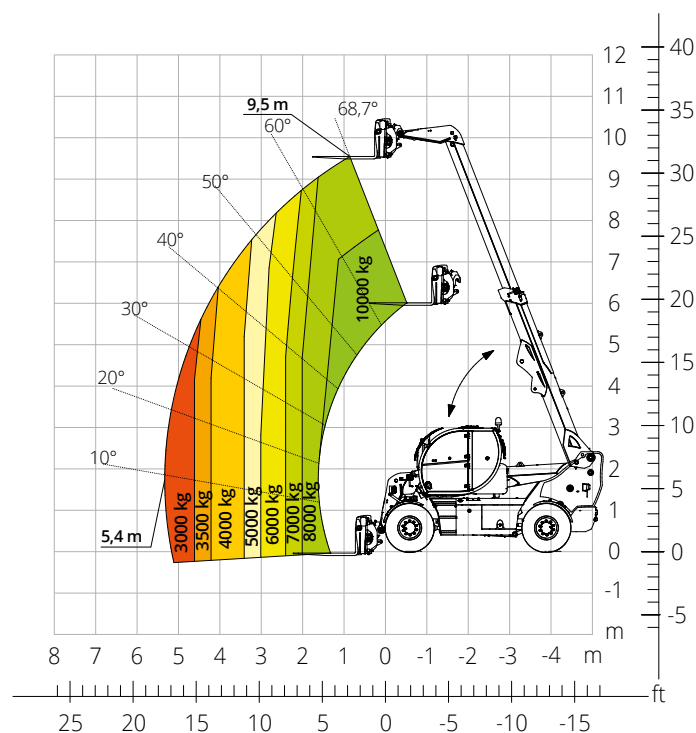
Load chart
FRONT ATTACHMENT ON TYRES



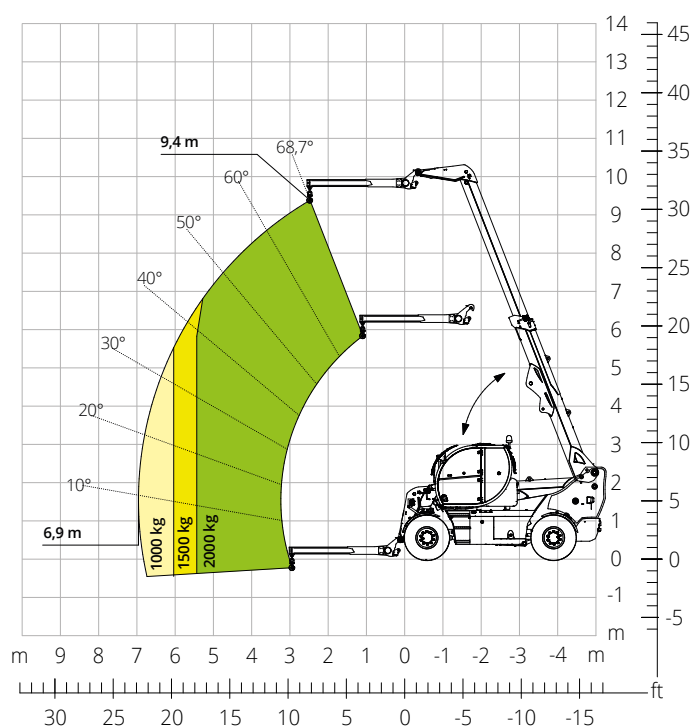
Load chart with
HOOK, 13,000 kg
ATT-05-013



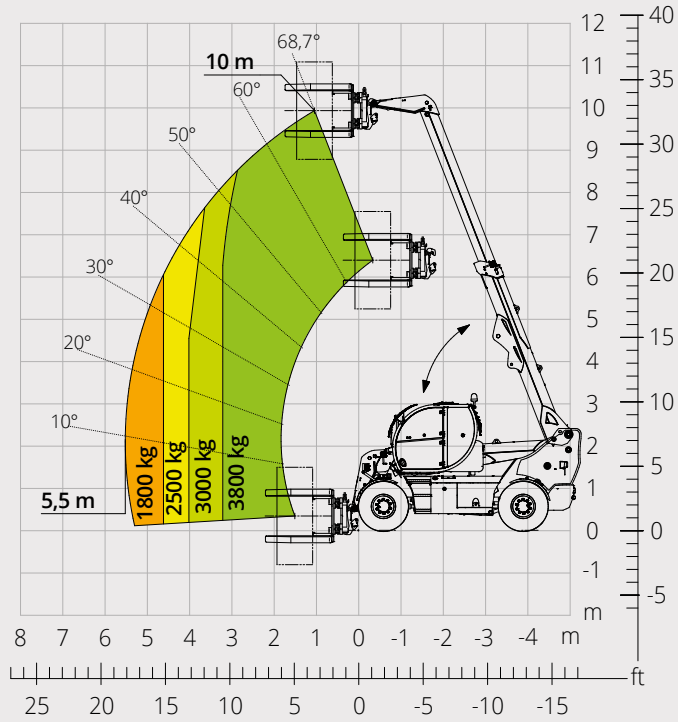
Load chart with
FRONT ATTACHMENT ON TYRES
ATT-03-019



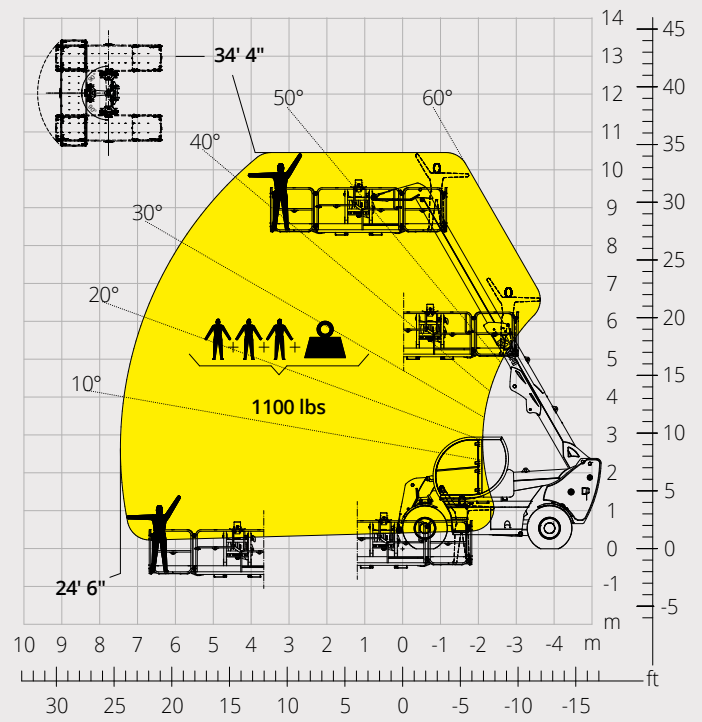
Load chart with
JIB 2,000 kg
ATT-04-015



Load chart with
TYRE HANDLER, 3,800 kg
ATT-06-005



Load chart with
ROTATING EXTENDABLE PLATFORM, 500 kg
ATT-01-016



| | | |
|--------------------------|---|--|
| Machine model | Maximum lifting capacity | 12,000 kg |
| | Load center | 600 mm |
| | Maximum lifting height | 9,50 m |
| | Maximum reach | 5,00 m |
| Engine | Type | Deutz TCD 3,6 L4 -Stage V Deutz TCD 3,6 L4 EDG - Stage IIIA |
| | Rated power | 100 kW (136 hp) @ 2,200 rpm |
| | Maximum torque | 500 Nm @ 1,600 rpm |
| | Displacement | 3.6 l |
| | Cylinders | 4 in line |
| | Engine configuration | Turbocharged direct injection diesel |
| | Cooling system | Water - intercooler |
| | FOPS-ROPS tested hermetic cab with protectors | • |
| Cab | Front, rear and upper wiper | • |
| | Headlights for road circulation, flashing beacon | • |
| | Rear view mirrors | • |
| | Heating - Air conditioning | • |
| Controls | Multi-function electro proportional joystick | • |
| | Heavy Duty with epicyclic reduction | • |
| | One steering cylinders each axle | • |
| | Levelling correction front axle | + 8° on the right and + 8° on the left |
| Axles and brakes | 3 types of steering | - with front steering - with round steer - with crab steering |
| | Tilting rear axle | • |
| | Hydraulic servo-assisted multidisc brake in oil bath on both axles, with double circuit | • |
| | Negative parking brake | • |
| | Tyre size | 445/65 - R22,5 ** two each axle, driving and steering |
| | Max. travel speed | 40 km/h |
| Performance | Drawbar pull | 84 kN |
| | Gradeability | 66% |
| | Turning radius (at wheels) | 4,100 mm |
| | Total unladen | 14,400 kg |
| Weights | Front axle unladen (boom retracted and lowered) | 3,800 kg |
| | Rear axle unladen (boom retracted and lowered) | 10,600 kg |
| | Hydrostatics | Rexroth / Danfoss |
| Transmission | Variable displacement hydrostatic pump with electronic control | • |
| | Variable displacement hydrostatic motor | One |
| | Gearbox | Gearbox with 2 speeds forward / reverse |
| | Load sensing piston pump | • |
| Hydraulic circuit | Circuit at 350 bar | • |
| | Proportional hydraulic electrovalve | Danfoss |
| | Suction and return line filters | • |
| | High pressure flexible hoses | • |
| Tanks capacities | Diesel fuel tank | 195 l |
| | AdBlue* | 10 l |
| | Hydraulic fluid | 190 l |
| | Engine oil | 9 l |
| | Cooliant | 20 l |
| Safety | Electronic safety system which controls the load with definition of the lifted load, radius and comparison with the diagrams stored | • |
| | Block of aggravating movements of the load | • |
| | Safety valves on cylinders | • |

The data given in this brochure are provided for information purposes and are subject to change without prior notice.

All images are purely guideline and might not give an exact representation of the product.

**the stated weight refers to the vehicle unladen with standard equipment and may vary depending on the chosen configuration.*

The standard machine configuration includes:

CAB

The standard machine configuration includes:

- Comfort seat
- Adjustable steering column
- Analogue joypad
- Heating
- Air conditioning
- FM/AM radio with USB and Bluetooth connectivity
- USB Type-A (5 V) inputs

REAL TIME INFORMATION

Touchscreen, 7"

MCTS – Magni Combi Touch System on-board software

Automatic RFID tools recognition system

LMI – Load Moment Indicator

Onboard and remote integrated diagnostics

TECHNICAL SPECIFICATIONS

Q-Fit standard

Provision for platform

Two-line CAN BUS system

Automatic front and rear wheel alignment

Automatic parking brake

Mechanical battery cut-off in engine compartment

Electrical system: 24 V – IP67

SERVICE

MyMagni by Trackunit connectivity system (3 years)

Warranty: 24 months/2,000 hours