



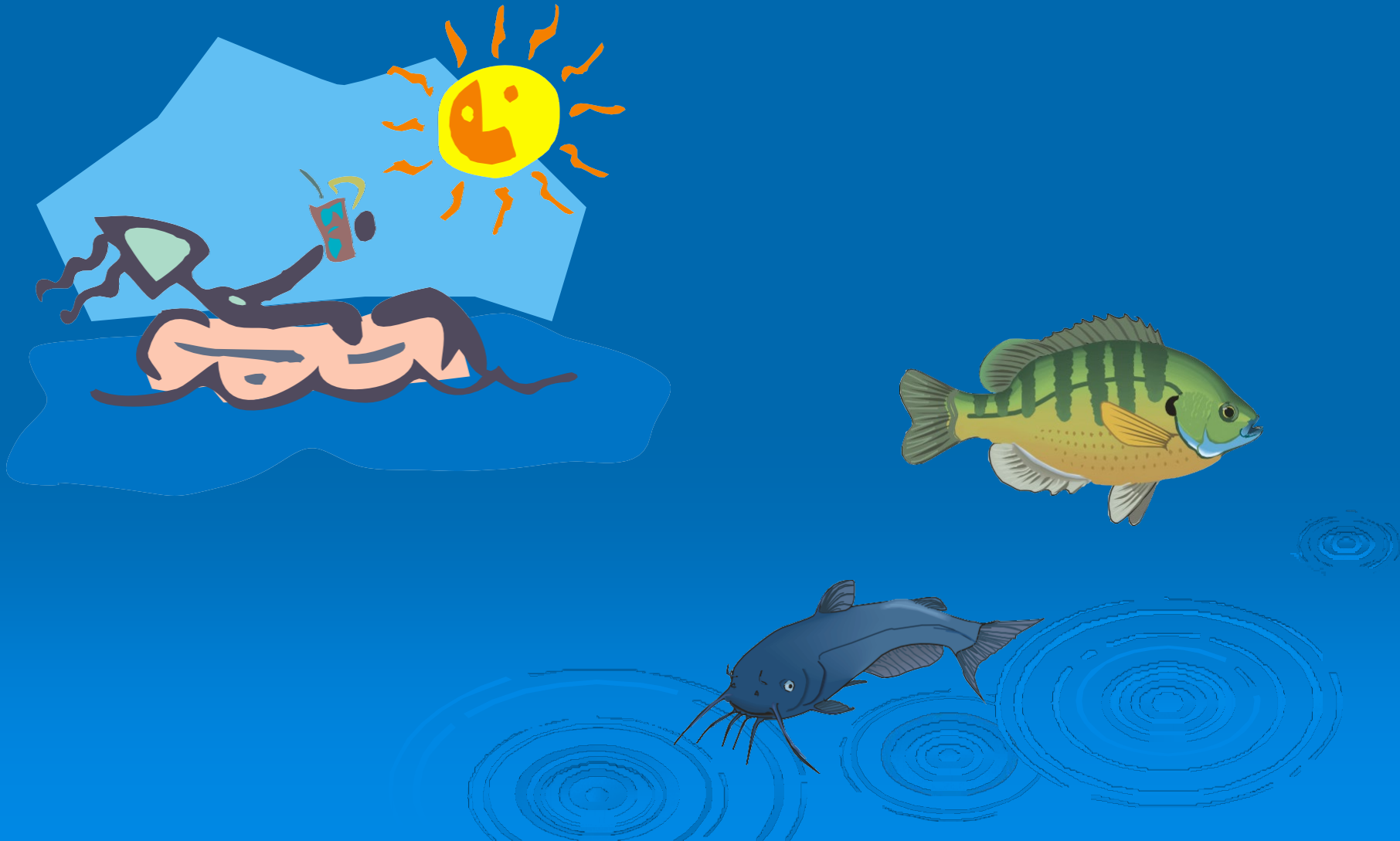
City of Dickson Stormwater Education Program

What is Stormwater Runoff?

- **Stormwater runoff** is rain that flows over the ground.

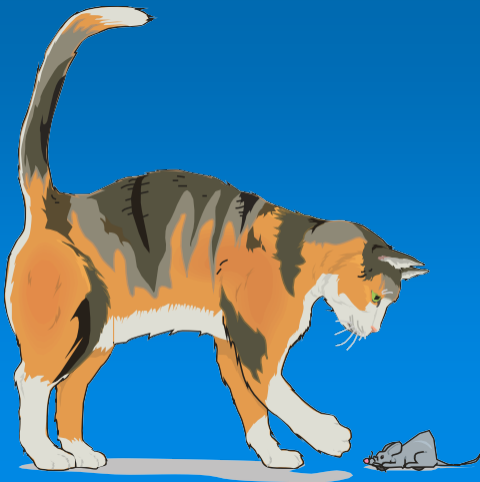


- The storm water runoff dumps into the water we use for swimming, fishing, and getting our drinking water.



PET CARE

- ▶ Pick up pet waste with a pooper-scooper or a plastic bag.
- ▶ Dispose of it in a garbage can or flush it down the toilet.



VEHICLE AND GARAGE



- ▶ Use a car wash or wash your car on a lawn.
- ▶ Inspect your car, boat, and lawnmower for leaks.

▶ ***NEVER dump automotive fluids into the storm drain!***

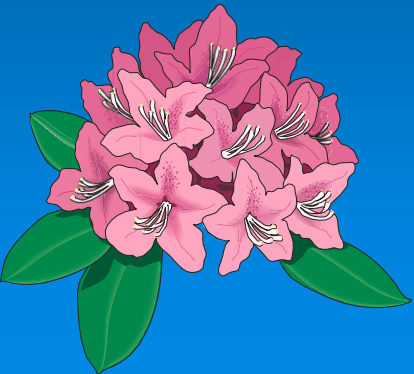
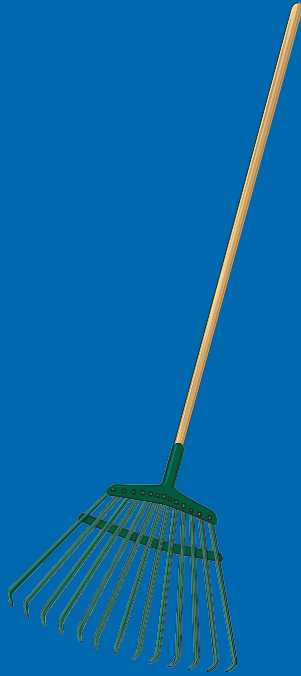


- ▶ Use kitty litter to clean up leaks and spills.



LAWN AND GARDEN

- ▶ Use pesticides and fertilizers sparingly.
- ▶ Do not blow or rake leaves into the street, gutter or storm drains.
- ▶ Don't over water your lawn.
- ▶ Plant grass or flowers in bare spots in your yard to prevent soil erosion.



SEPTIC SYSTEMS

- ▶ The system should be inspected every 3 years and pumped as necessary (every 3-5 years).
- ▶ Cars should not be parked over the septic system drain fields.

Flush responsibly! Do not flush chemicals, diapers, paper towels or cat litter.



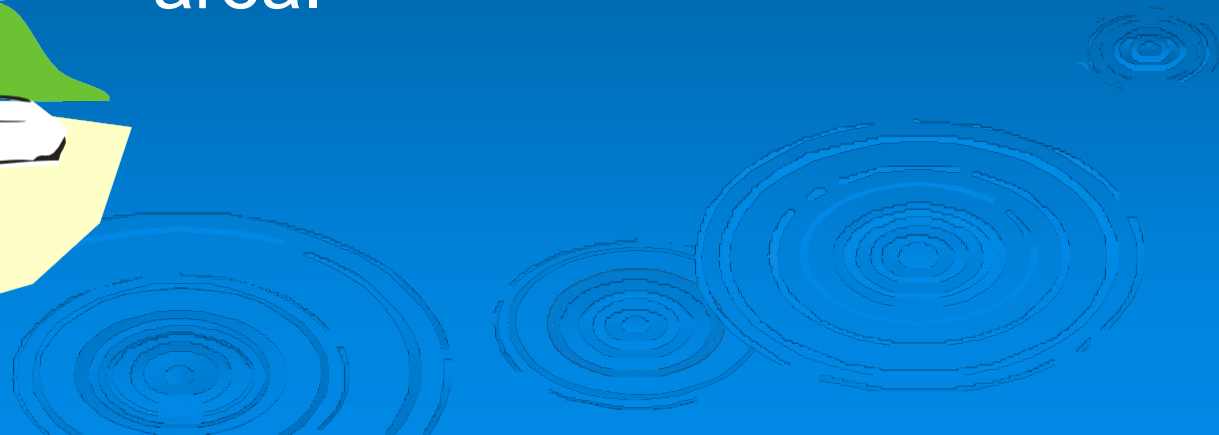
HOME REPAIR & IMPROVEMENT

- ▶ Use hazardous substances like paints and cleaners in the small amounts, and follow the directions on the label.
- ▶ Clean up spills immediately, and dispose of the waste safely. Store substances properly to avoid leaks and spills.
- ▶ Clean paint brushes in a sink, not outdoors.



SWIMMING POOL AND SPA

- ▶ Drain your swimming pool only when a test kit does not detect chlorine levels.
- ▶ Whenever possible, drain your pool or spa into the sanitary sewer system
- ▶ Pool chemicals should be stored in a protected, covered area.



COMMERCIAL

- ▶ Litter should be swept up from sidewalks, driveways and parking lots, especially around storm drains.
- ▶ Grease storage and dumpsters should be kept clean to avoid leaks.
- ▶ Report any chemical spill to the local hazardous waste cleanup team.



AUTOMOTIVE FACILITES

- ▶ Spills should be cleaned up immediately.



- ▶ Cars waiting to be repaired can leak fuel and oil that can be picked up by stormwater.



CONSTRUCTION

- ▶ Trash cans and dumpsters should be on the construction site.
- ▶ Erosion controls can prevent excessive amounts of soil and debris from being carried into the stormwater system.



AGRICULTURE

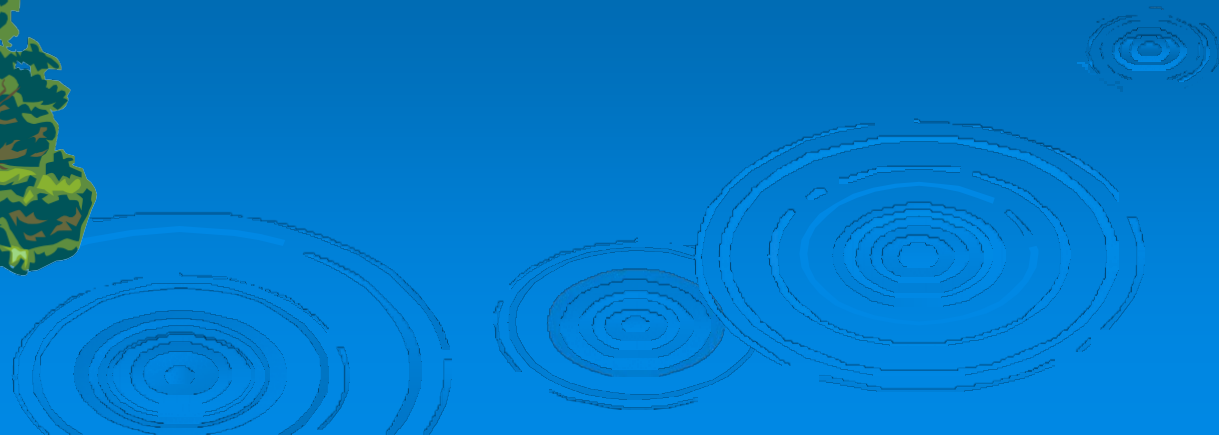
- ▶ Keep cows away from streams and provide them their own pond or water source.
- ▶ Apply fertilizers and pesticides according to label instructions.



FORESTRY

Improperly managed logging operation can result in erosion.

- Trees should be planted in cleared areas.



MORE THINGS YOU CAN DO TO PREVENT POLLUTION...

- ▶ Remember to reduce, reuse, and recycle all materials whenever possible.
- ▶ Join Captain Clean Water's team and volunteer to stencil a storm drain!

