

Solutions to Water Pollution

CITY OF DICKSON STORMWATER MANAGEMENT

CITY OF DICKSON
STORMWATER MANAGEMENT PROGRAM

600 EAST WALNUT STREET
DICKSON, TN 37055
615--441-9505

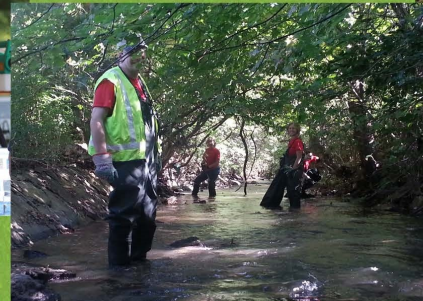
EMAIL: DLONG@CITYOFDICKSON.COM

WEB: WWW.CITYOFDICKSON.COM

FACEBOOK: CITY OF DICKSON, TENNESSEE, USA



Guidelines for Gas Station Management

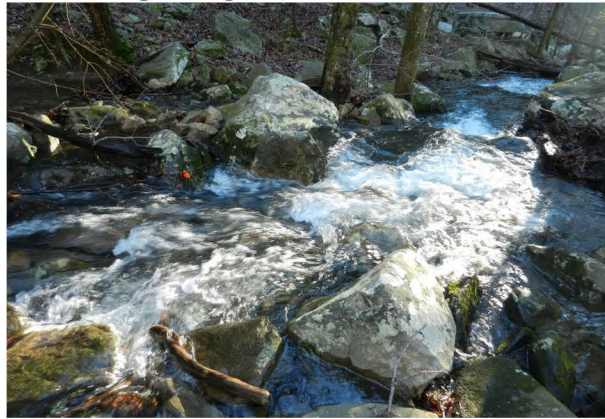


Unlike pollution from industry or sewage treatment facilities, which is caused by a discrete number of sources, stormwater pollution is caused by the daily activities of people everywhere. As rainwater and snowmelt run over streets, lawns, farms and construction sites, pollutants such as fertilizers, soil, pesticides, oil, grease, and pathogens are picked up and carried by the stormwater. The runoff carrying these pollutants is then discharged without treatment into bodies of water used for swimming, fishing and the provision of drinking water.



How does a gas station impact water quality?

- Storm drains lead directly to streams, rivers, lakes, and creeks.
- Oil and grease, heavy metals, and toxic chemicals can run into the stream and pollute the waterways.
- Heavy metals and toxic chemicals bioaccumulate into fish we eat, causing harm to human health.
- Oil and grease decrease habitat availability to aquatic organisms, and clog the gills of fish.



How do I properly manage dumpster pollution?

- Dumpsters can be raised onto pads. This technique will decrease the amount of run off coming from the trash inside the dumpster.
- Dumpster lids and doors should be kept closed to prevent rain water from overflowing and causing runoff to flow into storm drains.
- Do not dispose of liquids in the dumpsters.
- Keep dumpsters locked to prevent illegal dumping.



How do I control spills?

- You should always have an up to date spill response plan.
- Refer to Safety Data Sheets for restrictions and hazards on chemicals.
- Excess spill cleanup materials should be readily accessible.
- Use as little water as possible when cleaning up spills.
- Avoid bleach or disinfectants.



How do I prevent spills?

- Install impact shut off valves on all gasoline dispensers.
- Install secondary containment at fuel drop-off areas.

What are some other ways I can practice water quality management?

- Consider installing catch basin inserts to aid in filtering out stormwater pollutants from your site.
- If you pressure wash, ensure that water is directed away from the storm drains or filtered through a catch basin insert.
- Consider holding training sessions for employees to educate them on spill prevention, facility design, pollution control laws, and procedures in the event of a spill.

