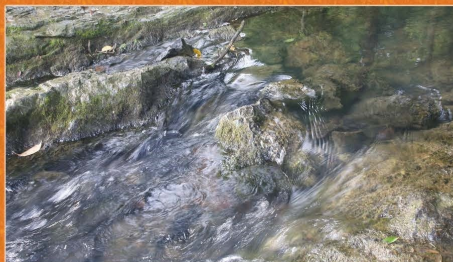
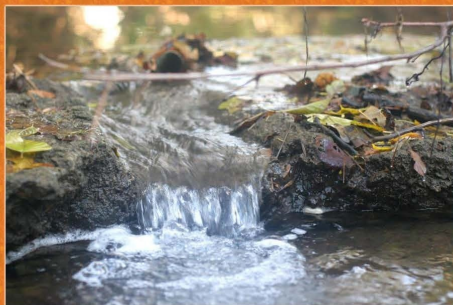




Solutions to Water Pollution



CITY OF DICKSON STORMWATER MANAGEMENT

CITY OF DICKSON
STORMWATER MANAGEMENT PROGRAM

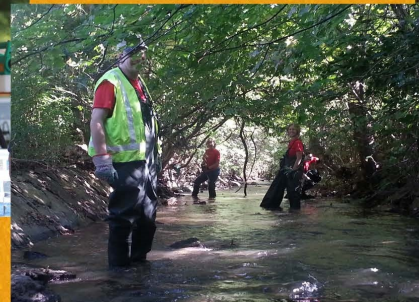
600 EAST WALNUT STREET
DICKSON, TN 37055
615-441-9505

EMAIL: DLONG@CITYOFDICKSON.COM

WEB: WWW.CITYOFDICKSON.COM

FACEBOOK: CITY OF DICKSON, TENNESSEE, USA

Guidelines for Food Service Establishments

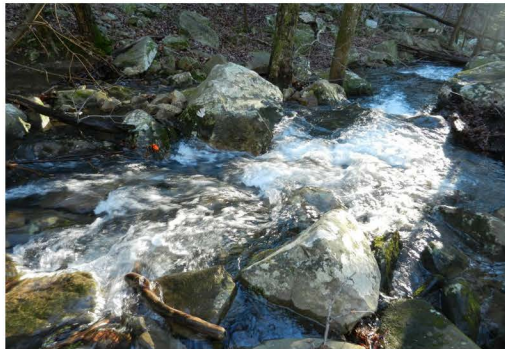


Unlike pollution from industry or sewage treatment facilities, which is caused by a discrete number of sources, stormwater pollution is caused by the daily activities of people everywhere. As rainwater and snowmelt run over streets, lawns, farms and construction sites, pollutants such as fertilizers, soil, pesticides, oil, grease, and pathogens are picked up and carried by the stormwater. The runoff carrying these pollutants is then discharged without treatment into bodies of water used for swimming, fishing and the provision of drinking water.



Why is it important to have water quality best management practices at my restaurant?

- Storm drains lead directly to streams, rivers, lakes, and creeks.
- Soapy water from cleaning contains phosphates. When excess nutrients enter waterways it can result in eutrophication, which causes an increase in algae and similar plant life. Excess plant growth in waterways reduces the oxygen available for other aquatic organisms.
- When leftover grease is poured down a drain it can lead to clogged pipes that burst. These pipes are linked to the sewage system and cause sewage to leak out from burst pipes and flow into waterways.
- Litter from outdoor eating areas can wash into waterways and result in habitat destruction and loss of aquatic life.



How do I properly clean my business?

- Dispose of mops and wash water into a mop sink or floor drains.
- DO NOT put a mop or wash water in gutters or down a storm drain.
- Clean greasy equipment in designated areas that are connected to the sanitary sewer system.



How do I dispose of my grease?

- Save used cooking grease and oil in sealed containers for recycling.
- DO NOT pour grease into sinks, floor drains, or storm drains.
- Make sure grease traps are installed and maintained.

How do I properly handle spill cleanup?

- DO NOT hose down spills outside.
- After a spill, use rags or other absorbents to clean up the spill. Dispose of them in the garbage or have them treated as hazardous waste, if necessary.

How do I manage my outdoor area and dumpster?

- Keep grease storage areas and dumpsters covered.
- Sweep up litter and debris from sidewalks, driveways, and parking lots.
- DO NOT hose off these areas before sweeping.
- Consider water friendly landscaping, for example; rain gardens, vegetated swales, and rain barrels.
- Use only the recommended amount of pesticides and fertilizers.

