



Solutions to Water Pollution



CITY OF DICKSON STORMWATER MANAGEMENT

CITY OF DICKSON
STORMWATER MANAGEMENT PROGRAM

600 EAST WALNUT STREET
DICKSON, TN 37055
615--441-9505

EMAIL: DLONG@CITYOFDICKSON.COM

WEB: WWW.CITYOFDICKSON.COM

FACEBOOK: CITY OF DICKSON, TENNESSEE, USA

Guidelines for Animal Waste Management

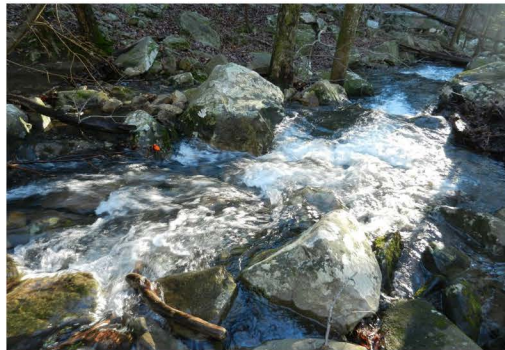


Unlike pollution from industry or sewage treatment facilities, which is caused by a discrete number of sources, stormwater pollution is caused by the daily activities of people everywhere. As rainwater and snowmelt run over streets, lawns, farms and construction sites, pollutants such as fertilizers, soil, pesticides, oil, grease, and pathogens are picked up and carried by the stormwater. The runoff carrying these pollutants is then discharged without treatment into bodies of water used for swimming, fishing and the provision of drinking water.



Why is it important to practice water quality best management practices?

- Storm drains lead directly to streams, rivers, lakes, and creeks.
- Animal waste contains bacteria, such as *E. coli*, that can enter the waterways and cause harm to human health and aquatic biodiversity.
- Animal waste also contains nutrients. When excess nutrients enter the waterway it can result in eutrophication, which causes an increase in algae and similar plant life. Excess plant growth in waterways reduces the oxygen available for other aquatic organisms.
- When animals are frequently allowed near streams they can cause erosion.



How do I properly maintain my dumpsters?

- Dumpsters can be raised onto pads. This technique will decrease the amount of run off coming from the trash inside the dumpster.
- Dumpster lids and doors should be kept closed to prevent rain water from overflowing and causing runoff to flow into storm drains.
- Do not dispose of liquids in the dumpsters.
- Keep dumpsters locked to prevent illegal dumping.



How should I wash off impervious surface areas?

- Use a vacuum, broom, or other dry method to clean the parking lot area instead of pressure washing.
- If you cannot avoid pressure washing install catch basin inserts to filter out pollutants or divert the water away from impervious surfaces and storm drains.
- Use environmentally-friendly cleaning products.



How do I properly manage animal waste?

- Collect animal waste and properly dispose of it in a landfill or in a sanitary sewer system.
- Animal bedding should be removed when soiled and properly disposed of.
- Cat litter can be sent to a landfill or buried.
- Wood shavings and chips should not reach storm drains.
- Fence off waterways to prevent animals from urinating or defecating in creeks or streams.

