

Turntable Synchronous AC motor



The SY 31 series a low speed synchronous motor is a development of standard industrial series specifically designed for use in high quality record decks which utilize the belt drive principle.

Particular attention has been given to the magnetization of the 24 pole rotor to optimize smooth running. This together with the high accuracy of stator pole placement minimizes torque ripple and provides low audible noise.

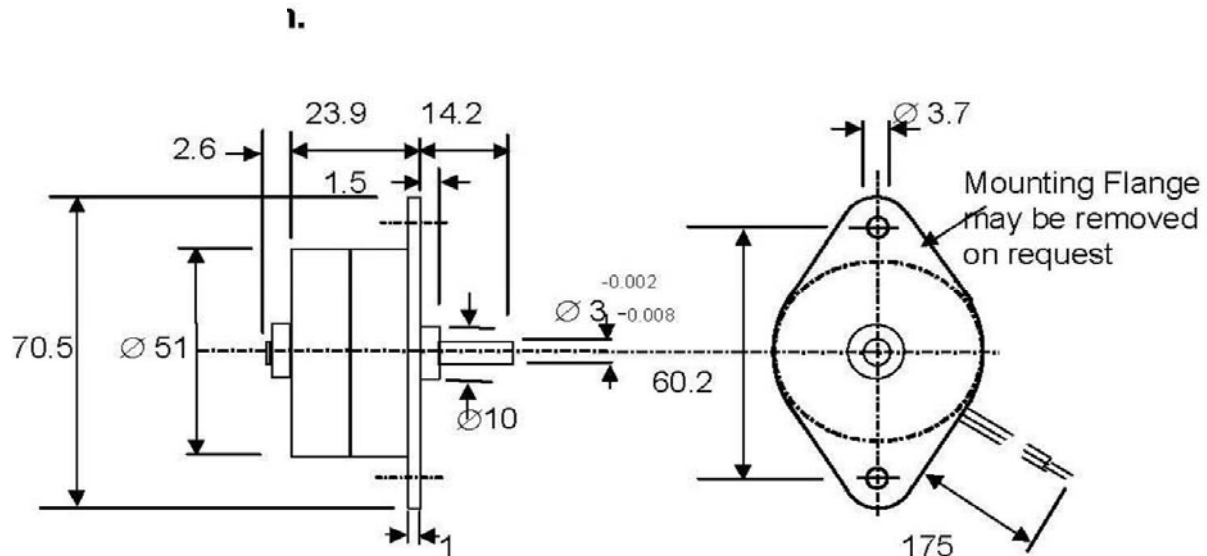
The motor which is designed for mounting horizontally with output shaft vertically up is provided with an increased shaft length and a 3 mm diameter to aid the fitment of the drive pulley. When fitting the drive pulley the shaft rear end should be supported to ensure the axial load limitation is not exceeded.

The winding have been specially designed to facilitate dual voltage operation, a 6.8K resistor being used in series when operation from a 220/240 Vac supply is required.

Motor Dimensions

Applications:

- * High quality turntable which utilize belt drive platter.



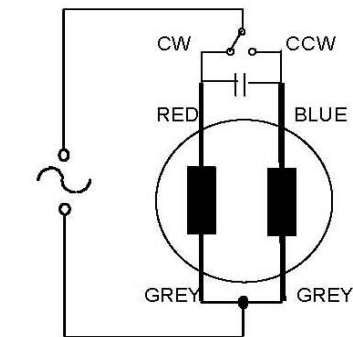
MJK, INC.

396 Chase PKWY Waterbury CT 06708 Telephone # (203) -596-1258 Fax # (203) 757-1724
www.mjkinc.net e-mail inquiry@mjkinc.net

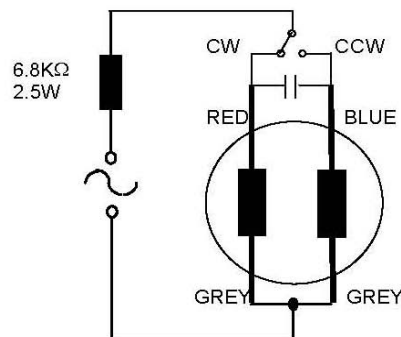
MOTOR TECHNICAL DATA

Ordering Part Number	9904 111		31813
Nominal voltage	V		120
Input frequency	Hz	50	60
Nominal torque	mNm		10
Nominal speed	rev/Min	250	300
Input power	W		1.8
Speed no load	rev/Min	250	300
Direction of rotation			reversible
Rotor resistance measured without brushes	Ohm		4460
Current at nominal voltage			18
Starting Current @ rated Voltage	mA		30
Max voltage	V		-15 to +10 %
Ambient temperature range			
* Operating	°C		-5 +50
*Storage	°C		-20+70
Insulation according to CEE 10			class 2
Insulation test voltage	V		2500
Bearing			slide
Special feature Rear bearing			slide
Max radial force	N		5
Max axial force	N		1.5
Mass	g		160
Require Phase capacitor 250 V AC rating	110V /50 Hz	0.2 μ F \pm 10%	0.18 μ F \pm 10%
Require series resister	220V/50Hz	6.8 K Ω 2.5W	
Require Phase capacitor 250 V AC rating		0.2 μ F \pm 10%	0.18 μ F \pm 10%

Connections



110 V ac-50Hz : C=0.22 μ F :speed = 250 rpm
 117 V ac-60Hz: C= 0.18 μ F :speed = 300 rpm



220 Vac 50 Hz: C= 0.22 μ F speed = 250 rpm

MJK, INC

396 Chase PKWY Waterbury CT 06708 Telephone # (203) -596-1258 Fax # (203) 757-1724
 www.mjkinco.net e-mail inquiry@mjkinco.net