



SV-2500 / SV-2500SE



SV-8300 / SV-8300SE

## Efficient machines for processing grass and straw

**Strongest  
construction  
on the market**

### Content

SV-2500 / SV-2500-CD. . . . .	2
SV-2500SE / SV-2500SE-CD . . . . .	4
SV-8300 / SV-8300-CD. . . . .	6
SV-8300SE / SV-8300SE-CD . . . . .	8
Optional extras . . . . .	10



# SV-2500 / SV-2500-CD swathwilter



## Strongest swath wilter on the market

Since its introduction in Sweden in 2003, Fransgård's popular swath wilters have been continuously developed and adapted to the needs of customers, while more and more markets have become aware of the machine and its qualities, which has made Fransgård the market leader in this machine.

The swath wilter is available in 2 models with either a v-belt or chain drive. Both models can be used to great advantage in grass, hay or straw and leave a high airy swath without impurities such as soil and stones.

In short, you achieve: **BETTER CROP QUALITY**

The SV-2500 has a powerful rotor with 6 rows of springs and equal spacing around the shield, giving a uniform flow. The rotor is driven by 4 strong v-belts. It is fitted with a fixed 3-point suspension that can be tilted and swivel wheels. The large swath guards make it possible to move the swath up to 80 cm. The SV-2500CD has the same basic design as the SV-2500, but with chain drives instead of v-belts.

## Technical data:

Model:	SV-2500	SV-2500CD
Working width	250 cm / 98"	250 cm / 98"
Transport width	300 cm / 118"	300 cm / 118"
Number of rotors	1	1
Rotor diameter	80 cm / 131"	80 cm / 113"
Rotor speed at 540 rpm	485 rpm.	485 rpm.
Number of rake springs	72	72
Number of wheels	2	2
Wheel size	16.5x6.5-8/6 ply	16.5x6.5-8/6 ply
Hydraulic connectors	-	-
3-point suspension	Cat II	Cat II
PTO connector rpm	400-540	400-540
Power requirement kW/HP	60 / 80	60 / 80
Working speed km/h	8-20	8-20
Weight	710 kg / 1.565 LB	710 kg / 1.565 LB



## Valuable details



**Strongest construction on the market**

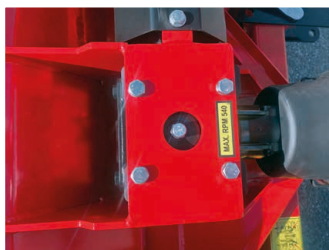
### **Specially designed drum hub**

The special curved design of the drum hub contributes to a particularly robust construction, which, together with the other details, makes the machine the strongest on the market.



### **Specially designed mounting rail for springs**

With a simple bent design of the mounting rail for the springs, the strength is significantly increased compared to the flat metal rails that are standard on most other machines of the same type.



### **Gearbox**

The robust angular gearbox has a standard vented plug and is well protected in the main frame.



### **Wheel suspension**

The swivel wheel suspension can be adjusted in height without using tools.



### **V-belt**

The 4 XPB v-belts are tightened via the large tightening wheel to provide optimal operation. The placement of the tensioning wheel helps to get even more power out of the belt drive.



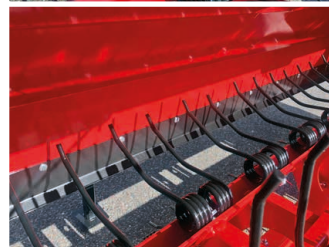
### **Lifting strap**

The 2 lifting straps relieve the 3-point suspension during transport and can be adjusted via a spindle.



### **Rotor reinforcement**

The rotor of the machine has 10 reinforcements mounted inside.



### **Rotor, internal**

The 72 close-fitting pick-up springs have a small bend at the edge and are spaced equally to the shield all round, ensuring optimum flow through the machine and a perfect swath.



### **Swath guard**

The large swath guards have a rolled arch at the bottom and thereby help to form a high airy swath. The guards can be moved in and out according to the amount of material and the desired position of the swath.



### **Three-point**

The very strong 3-point suspension is rolled in a hollow profile, which provides both high strength and a simple beautiful design.



# SV-2500SE / SV-2500SE-CD swathwilter



## Efficient swath wilter with multiple options

The swath wilter is available in 2 models, one of which is with hydraulic side lift. Both models can be used to great advantage in grass, hay or straw and leave a high airy swath without impurities such as soil and stones.

In short: **BETTER CROP QUALITY**

The models has a powerful rotor with 6 rows of springs and equal spacing around the shield, giving a uniform flow. 4 v-belts or chain drive (optional) ensure optimal operation without stopping.

SV-2500SE/SV-2500SE-CD has the same basic design as SV-2500, but with swivel 3-point and fixed wheels. With the side lift you can move the swath to the side and set it in 3 positions. The best result is achieved when the material hits the middle of the lift. For large amounts of material, the belt can be lifted completely and swath guards (optional extras) can be fitted.

## Technical data

Model:	SV-2500SE	SV-2500SE-CD
Working width	250 cm / 98"	250 cm / 98"
Transport width	300 cm / 118"	300 cm / 118"
Number of rotors	1	1
Rotor diameter	80 cm / 131"	80 cm / 131"
Rotor speed at 540 rpm	485 rpm.	485 rpm.
Number of rake springs	72	72
Number of wheels	2	2
Wheel size	18.5 x 8 / 6 ply	18.5 x 8 / 6 ply
Hydraulic connectors	1 double + 1 single	1 double + 1 single
3-point suspension	Cat II	Cat II
PTO connector rpm	400-540	400-540
Power requirement kW/HP	60 / 80	60 / 80
Working speed km/h	8-15	8-15
Weight	910 kg / 2.006 LB	910 kg / 2.006 LB



## Valuable details



### Cylinder

The machine is fitted with 2 parallel controlled hydraulic cylinders to raise and lower the side lift with



### Rubber damper

A rubber damper between the lift frame and the side lift relieves vibrations and provides a smooth working operation.



### Wheels

Large fixed wheels can be adjusted in height without using tools and ensure a smooth and stable drive.



### Hole for lubrication

Cut-outs in the v-belt guard allow easy access for lubricating the flanged bearings.



### Side lift adjustment

The side lift can be set in 3 different positions in the horizontal position, to get the most optimal use of the lifting capacity.



### V-belt guard

The v-belt guard protects the belts well and is fitted with a service hatch for checking the belts.



### Lifting strap

The 2 lifting straps relieve the 3-point suspension during transport.



### Oil engine

The 40 cc oil engine with valve block as standard ensures quick operation of the side lift for both right and left side. The oil engine must have a maximum capacity of 60 litres and a maximum pressure of 175 bar. It is advantageous to mount a hose on the engine directly to the tank of the tractor. (Item No. 4614, optional extra)



### Side lift

The design of the curved rear guard quickly and efficiently guides the material down onto the heavy-duty conveyor on the side lift, which ensures optimal transport of the material to the right or left side.



### Transport brackets

Transport brackets are easily fitted without using tools and ensure the smooth transport of the machine.



# SV-8300 / SV-8300-CD swathwilter



## The market's strongest double swath wilter

Fransgård's popular SV-2500 Swath Wilters are used as the basic construction in the dual-equipped SV-8300 Swath Wilters. It is built in a strong construction with hydraulic folding, which makes it both efficient and flexible at the same time. The machine is a towed model designed to process 2 swaths simultaneously. Therefore, it expands the model range of Swath Wilters, making Fransgård the market leader in these machines. The machine can be used with great advantage in grass, hay and straw, and leaves a high airy swath without impurities such as soil and stones.

### In short: **BETTER CROP QUALITY**

The SV-8300 Swath Wilter has 2 powerful rotors, each fitted with 6 rows of springs and equally spaced around the shield for a uniform flow. The 2 x 4 V-belts ensure optimal non-stop operation.

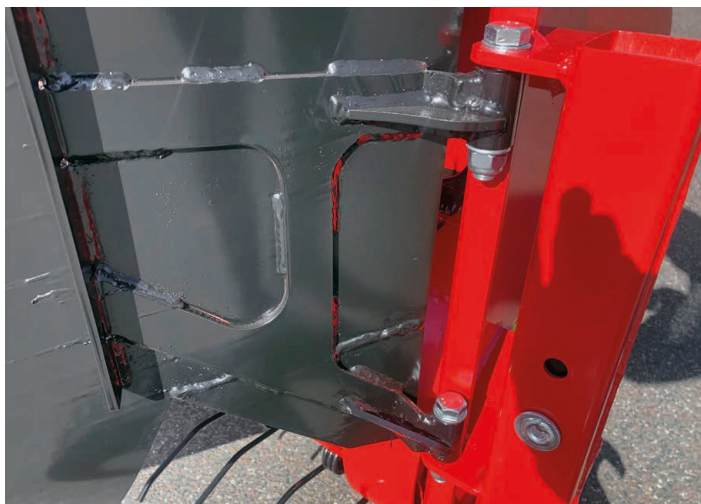
The SV-8300-CD has the same basic design as the SV-8300, but with chain drives instead of v-belts.

## Technical data:

Model:	SV-8300	SV-8300-CD
Working width	760-830 cm / 299-326"	760-830 cm / 299-326"
Transport width	300 cm / 118"	300 cm / 118"
Transport height	400 cm / 157"	400 cm / 157"
Transport length	540 cm / 213"	540 cm / 213"
Number of rotors	2	2
Rotor diameter	80 cm / 32"	80 cm / 32"
Rotor speed at 540 rpm	485 rpm.	485 rpm.
Number of rake springs	144	144
Number of wheels on the rotor	4	4
Number of transport wheels	2	2
Hydraulic connectors	3 double	3 double
PTO connector rpm	400 – 540	400 – 540
Power requirement kW/HP	Min. 40 kW	Min. 40 kW
Working speed km/h	10-22	10-22
Weight	2.860 kg / 6.305 LB	2.860 kg / 6.305 LB
Lift bracket	KAT II/III	KAT II/III



## Valuable details



### **Fittings for swath guards**

The large, heavy swath guards are mounted in a reinforced bracket with 2 bolts and nuts.



### **Drive shaft**

PTO shaft, gearbox, and pulleys ensure optimal machine operation.



### **Spring, wheels**

The draw spring, which is mounted on the wheel bracket, provides a smooth movement of the wheel fork and ensures that the wheels are always turned during transport.



### **Gearbox**

The robust angular gearbox comes with standard air venting and is well protected in the main frame.



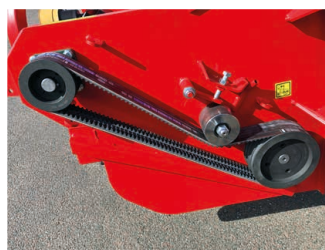
### **Wheel suspension**

The swivel wheel suspension adjusts in height without the use of tools.



### **Lubrication hole**

Cutouts in the wedge belt shield provide easy access for lubricating the flange bearings.



### **Wedge belts**

The 4 XPB wedge belts are tightened using the large tensioning wheel for optimal operation. The placement of the tensioning wheel contributes to achieving even greater belt traction.



### **Rotor, reinforcement**

The machine's rotor is equipped with 10 internal reinforcements.



### **Side shift**

Both rotors can be hydraulically shifted 35 cm to the side via the 2 powerful guide pipes located on top of the main frame.



### **Transport**

Both rotors are hydraulically tilted up for transport.



# SV-8300SE / SV-8300SE-CD swathwilter



## The strongest double swathwilters with a side elevator

Frangsgård's popular swathwilter, SV-2500SE, serves as the base design for the double-equipped swathwilter SV-8300SE. It is built in a robust construction with hydraulic folding, which makes it both efficient and flexible. The machine is a towed model designed to work on 2 swaths simultaneously. The machine can be used with great advantage in both grass, hay, and straw, leaving a high and airy swath without impurities such as soil and stones.

### In short: **BETTER CROP QUALITY**

The SV-8300SE swathwilter has 2 powerful rotors, each equipped with 6 rows of springs and an equal distance around the shield, providing a uniform flow. The 2 x 4 wedge belts ensure optimal operation without stops. With the side elevator, you can move the swath to the side and adjust it in 3 positions. The best result is achieved when the material hits the center of the elevator. For large amounts of material, you can lift the belt all the way up and install swath screens (optional equipment).

SV-8300SE-CD has the same basic structure as SV-8300SE but uses a chain drive instead of wedge belts.

## Technical data

Model:	SV-8300SE	SV-8300SE-CD
Working width	760-830 cm / 299-326"	760-830 cm / 299-326"
Transport width	300 cm / 118"	300 cm / 118"
Transport height	400 cm / 157"	400 cm / 157"
Transport length	610 cm / 213"	610 cm / 213"
Number of rotors	2	2
Rotor diameter	80 cm / 32"	80 cm / 32"
Rotor speed at 540 rpm	485 rpm.	485 rpm.
Number of rake springs	144	144
Number of wheels on the rotor	4	4
Number of transport wheels	2	2
Hydraulic connectors	3 double	3 double
PTO connector rpm	400 – 540	400 – 540
Power requirement kW/HP	Min. 40 kW	Min. 40 kW
Working speed km/h	10-22	10-22
Weight	3.290 kg / 7.253 LB	3.290 kg / 7.253 LB
Lift bracket	KAT II/III	KAT II/III



## Valuable details



### Cylinder

The machine is equipped with 2 parallel-controlled hydraulic cylinders to raise and lower the side elevator.



### Drive shaft

PTO shaft, gearbox, and pulleys ensure optimal machine operation.



### Side elevator

The design of the curved rear shield quickly and efficiently directs the material onto the robust belt on the side elevator, ensuring optimal material transport to the right or left side.



### Gearbox

The robust angular gearbox comes with standard air venting and is well protected in the main frame.



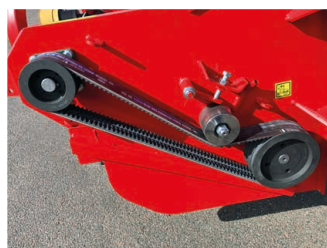
### Electrically operated hydraulics

The electrically operated hydraulic system ensures optimal machine operation.



### Lubrication hole

Cutouts in the wedge belt shield provide easy access for lubricating the flange bearings.



### Wedge belts

The 4 XPB wedge belts are tightened using the large tensioning wheel for optimal operation. The placement of the tensioning wheel contributes to achieving even greater belt traction.



### Rotor, reinforcement

The machine's rotor is equipped with 10 internal reinforcements.



### Side shift

Both rotors can be hydraulically shifted 35 cm to the side via the 2 powerful guide pipes located on top of the main frame.



### Transport

Both rotors are hydraulically tilted up for transport.



Optional



Item No.	Subject and Description	SV-2500	SV-2500SE	SV-8300
4236	The tooth lock consists of 6 x 5 mm galvanised wire with bracket. This ensures that broken springs do not fall into the swath. Can be retrofitted.	●	●	●
4614	Hydraulic hose for free return to the tank from the oil motor on the side lift.	X	●	X
4612	Swath guard for fitting on the machine when the side lift is open. Must be removed before the side lift can be lowered again 4612 is 85 cm long	X	●	X
4615	Swath guard for fitting on the machine when the side lift is open. Must be removed before the side lift can be lowered again. 4615 is 125 cm long.	X	●	X

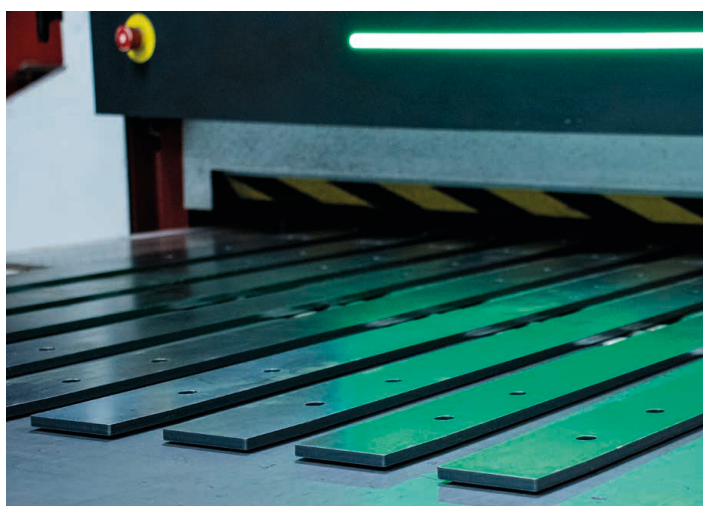
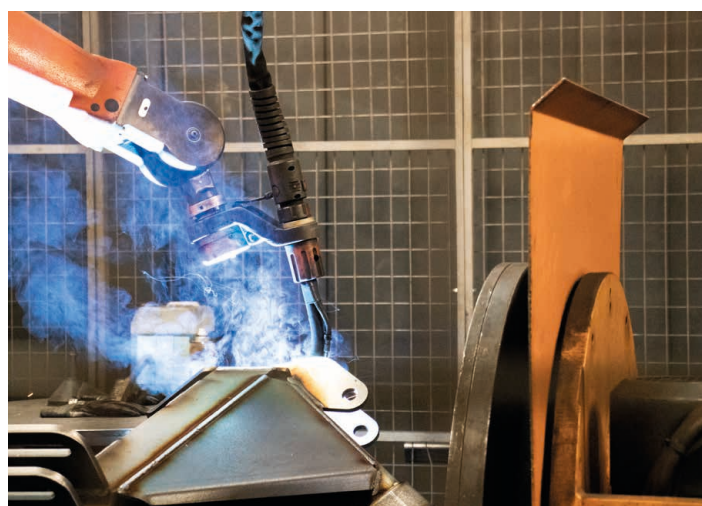


Read more at [www.fransgard.dk](http://www.fransgard.dk)



Made in Denmark – since 1967

# Modern machines developed by professionals



## Made in Denmark

A strong combination of our own modern production facilities and excellent craftsmanship ensures that our products meet the high demands of customers for durable and robust machines.

With all our production on-site, we maintain a constant overview of every single order so that the customers receive the right article on time.

**It's Danish efficiency and quality at its best.**



# Efficient swathwilters for grass, hay and straw



Made in Denmark

Dealer:

Manufacturer:

Fransgård Maskinfabrik A/S  
Fredbjergvej 132 · DK-9640 Farso  
T: +45 98 63 21 22  
[www.fransgard.dk](http://www.fransgard.dk)

