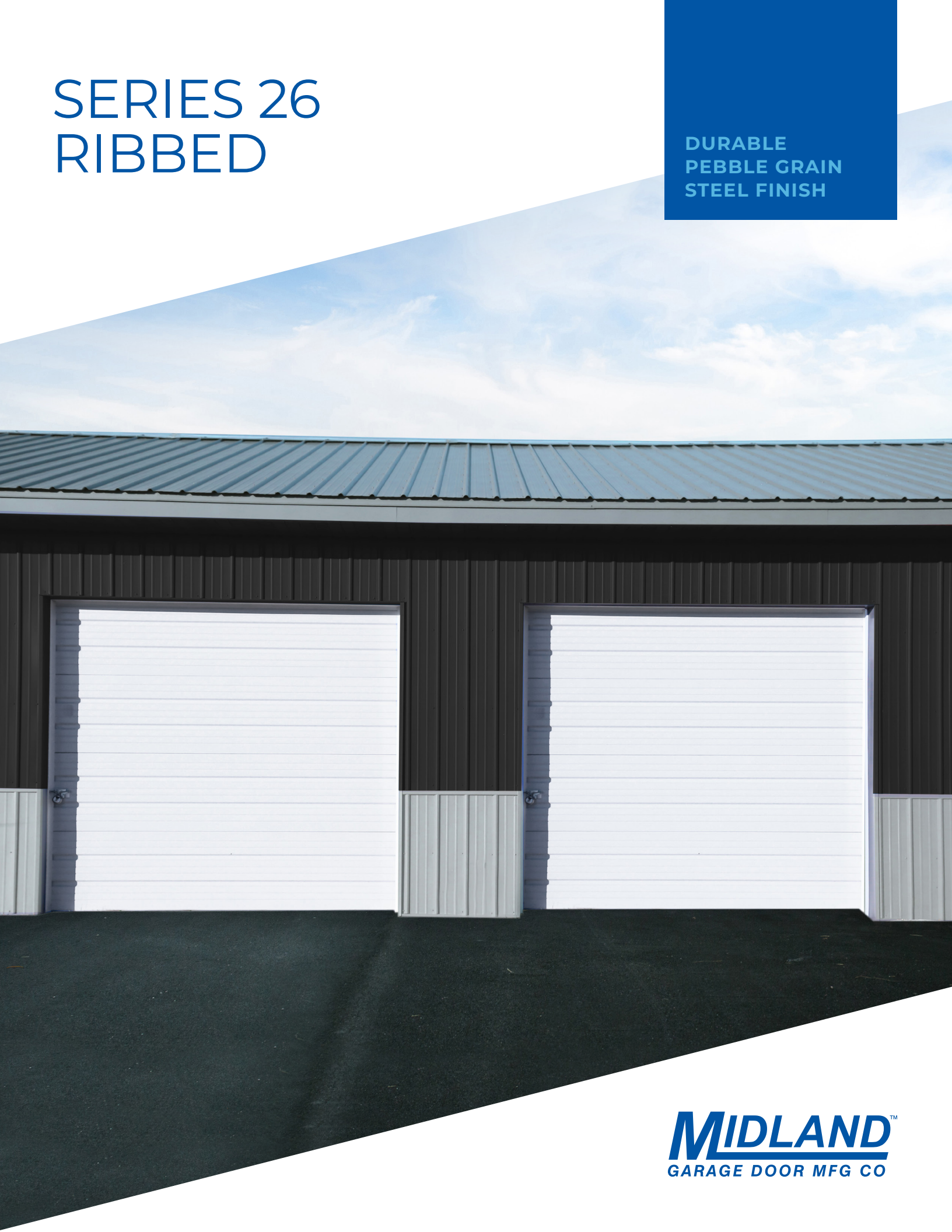


SERIES 26 RIBBED

DURABLE
PEBBLE GRAIN
STEEL FINISH



MIDLAND[™]
GARAGE DOOR MFG CO

COLORS



White



Coffee



Color Select™

*Printed colors may not be accurate. Contact your local Midland dealer for exact color samples

SPECIFICATIONS

Series 26

U-Factor

R-Value

0.38*

7.0*



Foam/Insulate

T-Bond/
Plain Steel

Thickness

2 inches

Exterior Steel

24 gauge

Interior Steel

N/A

Warranty* Excludes Springs

Lifetime

*With T-Bond

COLORS

White

•

Coffee

•

Color Select**

•

*For full warranty details contact your Midland dealer

**ColorSelect™ uses Sherwin Williams Polane® Solar Reflective Polyurethane Enamel, providing a durable, heat-repelling coating.



LOCK OPTIONS



Mini Warehouse Lock pictured above.

INSIDE LOCK

- Side bolt door latch, attached on inside
- Not visible from the outside
- Harder for an intruder to tamper with

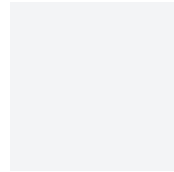
RESIDENTIAL KEYED LOCK

- T-handle keyed lock, attached on outside
- Cylinder-shaped key that is difficult to reproduce
- Impossible to operate the handle without key

MINI WAREHOUSE LOCK

- Side bolt door latch
- Attached on outside of garage door
- Latch fits with padlock

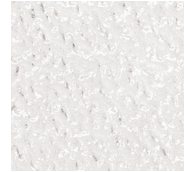
GLASS



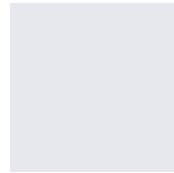
Plain



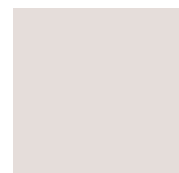
Bronze



Obscure



Satin*



Low E



Gray



Double Dark*

*Tempered only.

WINDOWS



24" x 5"



24" x 12"