

COMMERCIAL

ENERGYSAVER™

SIMPLICITY AND
HEAVY-DUTY
RELIABILITY



MIDLAND™
GARAGE DOOR MFG CO

COLORS



White



Sandtone



Tera-Bronze



Coffee



Black



Color Select™

**Printed colors may not be accurate. Contact your local Midland dealer for exact color samples*

SPECIFICATIONS

3-Inch EnergySaver™

2-Inch EnergySaver™

U-Factor

R-Value

0.15

17.05



0.22

9.25



Foam/Insulate

Extruded closed-cell polystyrene

Polystyrene

Thickness

3 inches

2 inches

Maximum Width

40 ft. 2 in.

24 ft. 2 in.

Exterior Steel

25 gauge

20 gauge upgrade, white only

25 gauge

20 gauge upgrade, white only

Interior Steel

25 gauge

25 gauge

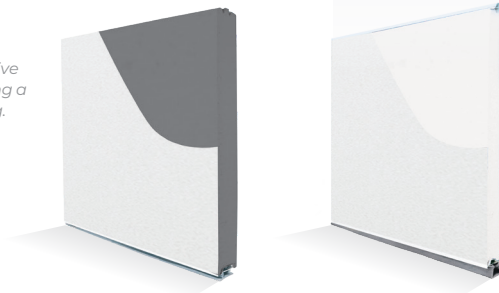
Warranty* Excludes Springs

10 years

10 years

**For full warranty details contact your Midland dealer*

**ColorSelect™ uses Sherwin Williams Polane® Solar Reflective Polyurethane Enamel, providing a durable, heat-repelling coating.*



WINDOWS



24" x 7"



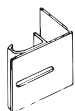
24" x 12"



32" x 14"

**Only available in 3-inch*

TRACK MOUNTING

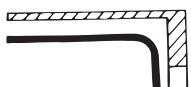


Reverse Angle Mounted Track
Continuous leg-in angle to attach to steel jambs

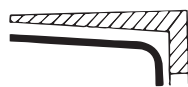


Angle Mounted Track
Continuous leg-out angle used on larger doors to attach to wood jambs

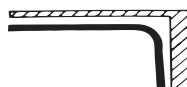
TRACK CONFIGURATIONS



Standard Lift
For normal installations



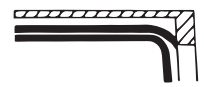
Inclined Track
To follow pitch of roof



Hi-Lift
To put horizontal track as close to ceiling as possible

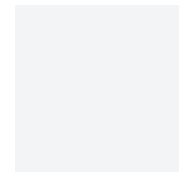


Vertical Lift
Full vertical rise where headroom is available



Low Headroom
For low-clearance installations

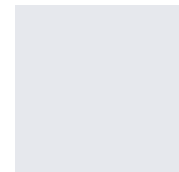
GLASS



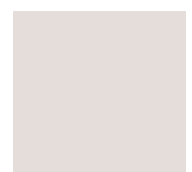
Plain



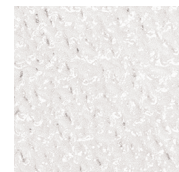
Bronze



Satin*



Low E



Obscure



Double Dark*



Gray

**Tempered only.*

PACKAGE UPGRADES

Harsh environment and Heavy-Duty Hardware Packages available