

MINI FOOTBALL (10-11 YEARS)

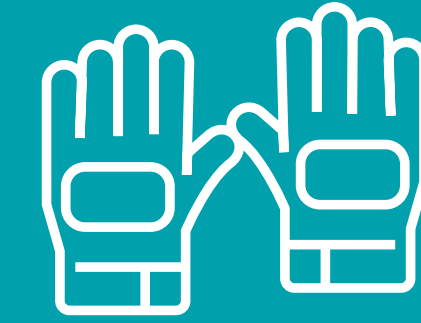
FOOTBALL RULES



GAME FORMAT

7v7

GOALKEEPER



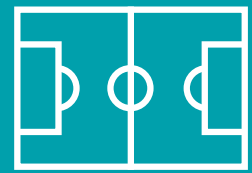
Yes

GAME TIME



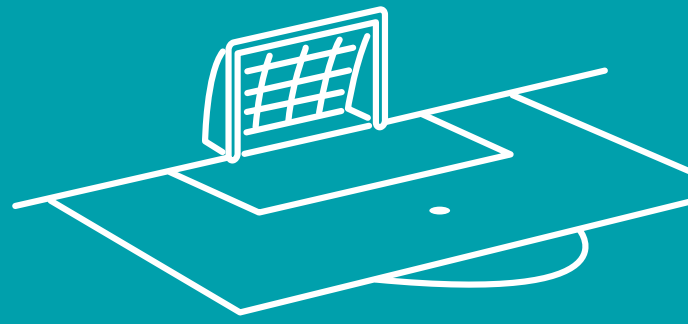
2 x 20 - 25
minute halves or games

PITCH SIZE



Optimal: 50m x 30m
Range: 45m x 30m
- 55m x 35m

PENALTY AREA



20m x 8m

GOAL SIZE

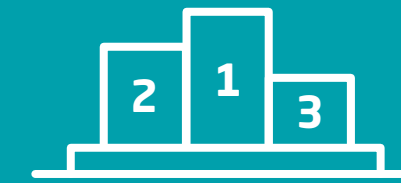


4m x 2m

BALL SIZE



TABLES & RESULTS



Results recorded for
grading purposes only,
no table keeping

SUBSTITUTIONS



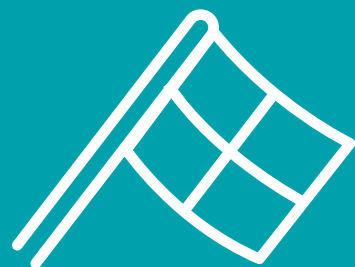
2-3 rolling subs

RETREATING LINE



30% of the field
from the goalline

OFFSIDES



Yes - retreating line

NO PENALTIES



GOAL KICKS



Yes -
Retreating line in action

FREE KICKS



Direct or indirect -
Opposition 5m away

CORNERS



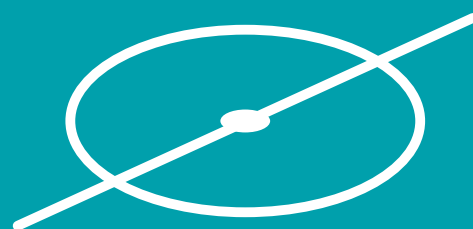
Yes

RESTART FROM SIDELINE



Throw in

KICK OFF



Pass from halfway -
opposition 5m away

DISCIPLINARY



No cards - educate
on player behaviour

POSITIVE COACHING



Encourage players
positively
Let the players PLAY

FAIR PLAY



3 cheers and shake
hands after games

EQUIPMENT



Boots & shinpads