

L. Ph. Bolander & Sons

1355 Evans Ave.

San Francisco, Calif. 94124

800/434-5611 FAX 415/648-0402

Flagpoles Since 1885

Job:

Location:

Contractor:

All New Galvanized Steel Designed to Withstand Winds of 120 MPH Minimum , Un-Flagged

Pole Height: 100'

Pole Finish: Hot Dip Galvanized

Butt Dia: 18.64"

Top Dia: 5"

Wall Thickness: .218"/.1793"

Taper Length 100'

Sections , two

Truck: Revolving Cast Aluminum

Halyard Dia: 1/8"-5/32"

Type: 7x19" Stainless Steel

Qty: One

Snap: Swivel eye with Vinyl Covers

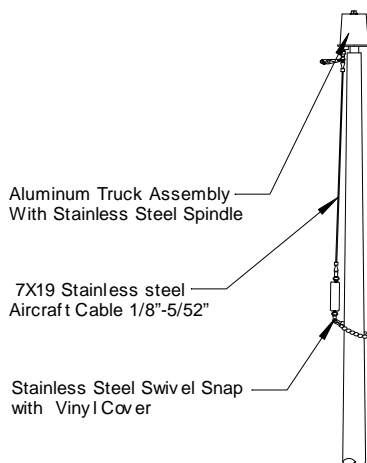
Material: Stainless Steel

Quantity: 6

Flags:

Qty:

CONE TAPERED STEEL FLAGPOLE

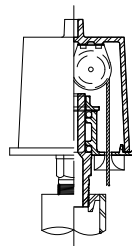


All New, Steel with Hot Dip
Galvanized Finish

Steel Access
Door

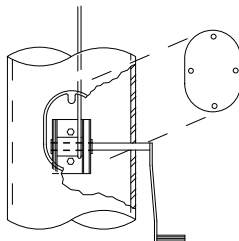
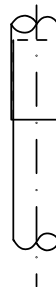
REVOLVING NON-FOULING TRUCK DETAIL

Aluminum Body, non-fouling
Internal Halyard Truck.
Stainless Steel Sealed
Bearings & 2 1/2" dia. plated
Steel Sheaves. Truck to have
Stainless Steel Spindle



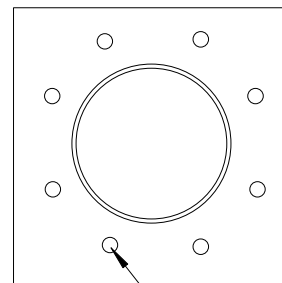
SELF ALIGNING LAP JOINT

This pre-fitted, shop
machined Lap Joint is
designed to allow for the
field assembly, without
welding, of large shafts
which must be shipped
in sections.



Stainless Steel Direct Drive
Winch, lockable in any position

Steel Base Plate
26"x26" x1.75"



23.5" Bolt Circle

3000 PSI Concrete Minimum

8-1.5"x60" Hot Dip
Galvanized Anchor Bolts

Lightning Ground, by
others, as per local
code

**Note: Foundation Dimensions
to be determined by State
Licensed Engineer**

**Flagpole Designed for 30'x60'
Polyester Flag In 100 MPH
Wind Zone**

L. Ph. Bolander & Sons

1355 Evans Ave.

San Francisco, Calif. 94124

800/434-5611 FAX 415/648-0402

Flagpoles Since 1885

Job:

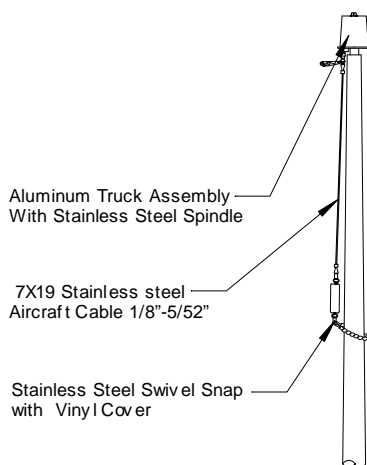
Location:

Contractor:

All New Galvanized Steel Designed to Withstand Winds of 120 MPH Minimum , Un-Flagged

Pole Height: 120'	Pole Finish: Hot Dip Galvanized	Butt Dia: 21.07"	Top Dia: 5"
Wall Thickness: .218"/.1793"	Taper Length 120'	Sections 3	
Truck: Revolving Cast Aluminum w/ Stainless Steel Stem	Halyard Dia: 1/8"-5/32"	Type: 7x19" Stainless Steel	Qty: One
Snap: Swivel eye with Vinyl Covers	Material: Stainless Steel	Quantity: 6	
Shaft weight 4662#			
Flags:			Qty:

CONE TAPERED STEEL FLAGPOLE



All New, Steel with Hot Dip
Galvanized Finish

Steel Access
Door

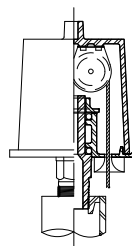
3000 PSI Concrete Minimum

8- 1.75" x 60" Hot Dip
Galvanized Anchor Bolts

Lightning Ground, by
others, as per local
code

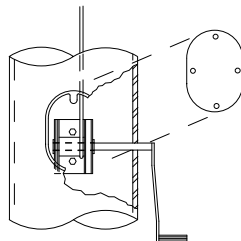
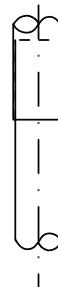
REVOLVING NON-FOULING TRUCK DETAIL

Aluminum Body, non-fouling
Internal Halyard Truck.
Stainless Steel Sealed
Bearings & 2 1/2" dia. plated
Steel Sheaves. Truck to have
Stainless Steel Spindle



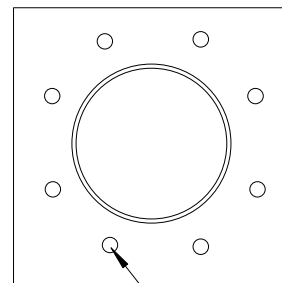
SELF ALIGNING LAP JOINT

This pre-fitted, shop
machined Lap Joint is
designed to allow for the
field assembly, without
welding, of large shafts
which must be shipped
in sections.



Stainless Steel Direct Drive
Winch, lockable in any position

Steel Base Plate
30"x30" x1.75"



26.5" Bolt Circle

Note: Foundation Dimensions
to be determined by State
Licensed Engineer

Flagpole Designed for 30'x50'
Polyester Flag In 90 MPH
Wind Zone

L. Ph. Bolander & Sons

1355 Evans Ave.

San Francisco, Calif. 94124

800/434-5611 FAX 415/648-0402

Flagpoles Since 1885

Job:

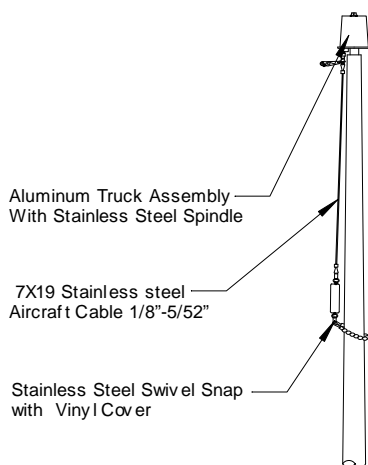
Location:

Contractor:

All New Galvanized Steel Designed to Withstand Winds of 120 MPH Minimum , Un-Flagged

Pole Height: 150'	Pole Finish: Hot Dip Galvanized	Butt Dia: 24.69"	Top Dia: 5"
Wall Thickness: .5"-.250"-.218"-.187"	Taper Length 150'	Sections, Four	
Truck: Revolving Cast Aluminum	Halyard Dia: 1/8"-5/32"	Type: 7x19" Stainless Steel	Qty: One
Snap: Swivel eye with Vinyl Covers	Material: Stainless Steel	Quantity: 6	
Flags:			Qty:

CONE TAPERED STEEL FLAGPOLE



All New, Steel with Hot Dip
Galvanized Finish

Steel Access
Door

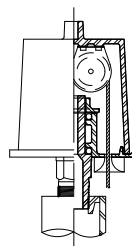
3000 PSI Concrete Minimum

1.75"x84" Hot Dip
Galvanized anchor bolts (8)

Lightning Ground, by
others, as per local
code

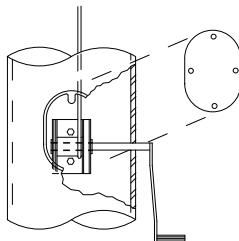
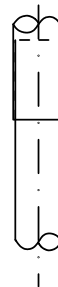
REVOLVING NON-FOULING TRUCK DETAIL

Aluminum Body, non-fouling
Internal Halyard Truck.
Stainless Steel Sealed
Bearings & 2 1/2" dia. plated
Steel Sheaves. Truck to have
Stainless Steel Spindle



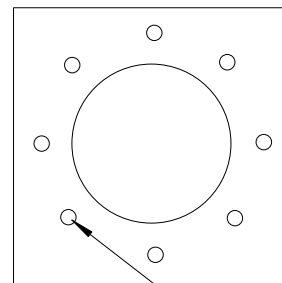
SELF ALIGNING LAP JOINT

This pre-fitted, shop
machined Lap Joint is
designed to allow for the
field assembly, without
welding, of large shafts
which must be shipped
in sections.



Stainless Steel Direct Drive
Winch, lockable in any position

Steel Base Plate
32"x32"x2"



29" Bolt Circle

**Note: Foundation Dimensions
to be determined by State
Licensed Engineer**

**Flagpole Designed for 30'x50'
Polyester Flag In 90 MPH
Wind Zone**









