



Funded by
UK Government



FOXLEASE PARK

ACCOMMODATION & CAMPING INFORMATION

2026

Foxlease Park offers 63 acres of activities, camping, residential accommodation and experiences in the grounds of Foxlease House. You can choose to stay in one of our three self-contained residential accommodation buildings: The Lodge, The Barn or The Coach House; alternatively you can join us on one of our 15 campsites available for youth groups, schools, uniformed groups or societies and organisations. We also have campsites available for family camping.

TO BOOK



You can book via: www.foxlease.uk/bookings
Or contact us by email to bookings@foxlease.uk



If you would like to enquire about a large-scale or whole site booking then please contact us using the email above.

SITE MAP



Contact Us
bookings@foxlease.uk

BOOK HERE



INDOOR ACCOMMODATION



PRICES



THE LODGE

Purpose built dormitory style accommodation set in its own grounds. The Lodge is a two storey building and can be booked as a whole or individual floors.

[MORE INFORMATION](#)



THE BARN

A single storey building which comprises dormitory style accommodation, shared bathroom, large hall and equipped kitchen.

[MORE INFORMATION](#)



THE COACH HOUSE

The ground floor of The Coach House comprises dormitory style accommodation, shared bathroom, medium sized hall and equipped kitchen.

[MORE INFORMATION](#)

Contact Us
bookings@foxlease.uk

[BOOK HERE](#)



THE LODGE DOWNSTAIRS

The Lodge - Downstairs Sleeps 24 Self - catering accommodation.

The Lodge is split into 2 floors and can be booked separately or as a whole building. When booking the whole building, select both upstairs and downstairs. The lobby is shared and contains stairs to the upper floor (No lift to upper floor).



THE KITCHEN



THE MAIN HALL



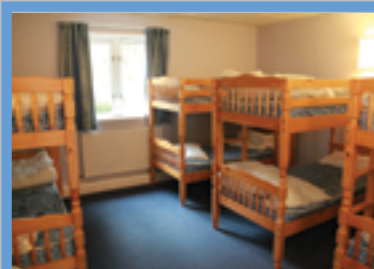
BUNK ROOM

FACILITIES:

- A large hall
- Fully equipped kitchen - includes servery/hatch
- Food preparation room - includes servery/hatch
- Dormitory style bedrooms
- Shared bathroom
- 2 rooms contain ensuite bathroom
- Disabled toilet
- Small patio and enclosed lawn



ENSUITE BATHROOM



BUNK ROOM



OUTSIDE SPACE

Contact Us
bookings@foxlease.uk

BOOK HERE

PRICES PER NIGHT
Girlguiding/Scouting
Downstairs only - £315
Whole building - £485.10
Standard rate
Downstairs only - £378
Whole Building - £582.75



THE LODGE UPSTAIRS

The Lodge - Upstairs Sleeps 13
Self - Catering accommodation.

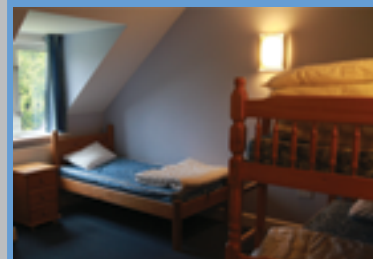
The Lodge is split into 2 floors and can be booked separately or as a whole building. When booking the whole building, select both upstairs and downstairs. The lobby is shared and contains stairs to the upper floor (No lift to upper floor).



THE KITCHEN



DINING AREA



BUNK ROOM



FACILITIES:

- Equipped kitchen/diner area,
- Shared bathroom
- Dormitory style bunk rooms
- Shared lobby to upper floor
- One ensuite bedroom

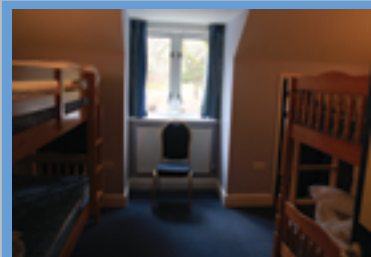
[BOOK HERE](#)



BATHROOM



STAIRS



BUNK ROOM

Contact Us
bookings@foxlease.uk

PRICES PER NIGHT
Girlguiding/Scouting
Upstairs only - £170
Whole building - £485.10
Standard rate
Upstairs only - £204.75
Whole Building - £582.75



THE COACH HOUSE

DOWNSTAIRS

The Coach House - Sleeps 22
Self - Catering accommodation.

The Coach House self catering accommodation is situated on the ground floor of what was originally the stables.



THE KITCHEN



REAR VIEW



LEADERS' ROOM

FACILITIES:

- Medium sized hall
- Equipped kitchen
- One bunkbed style dormitory which sleeps 18
- Shared bathroom
- Small ensuite bedroom which sleeps 4 in bunk beds.



Please contact us for a price to add additional upstairs bedrooms to your booking.



BATHROOM



DORMITORY

PRICES PER NIGHT

Girlguiding/Scouting - £288.75
Standard rate - £346.50



THE HALL

Contact Us
bookings@foxlease.uk

BOOK HERE



THE BARN

The Barn - Sleeps 28 Self - Catering accommodation.

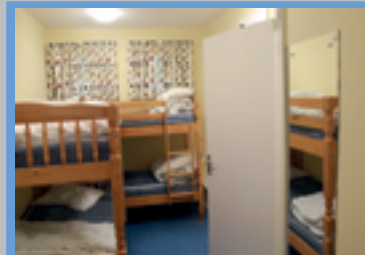
The Barn is a single storey building with ramp access. It has a large hall with a serving hatch from the kitchen.



THE KITCHEN



REAR OF THE BARN



DORMITORY

FACILITIES:

- A large hall
- Equipped kitchen
- Shared bathrooms
- Two separate toilets
- Two dormitories which sleep 10 in each
- One ensuite bedroom which sleeps 4 in bunk beds
- Small lounge and bedroom which sleeps 4 in bunk beds (No bathroom in this area)
- Small patio area outside the back door of The Barn

NOTE One dormitory has steps leading down into the room.



BATHROOM



DORMITORY



THE HALL

Contact Us
bookings@foxlease.uk

BOOK HERE

PRICES PER NIGHT

Girlguiding/Scouting - £367.50
Standard rate - £441



CAMP SITES



Foxlease Park has 15 individual campsites with facilities and each with its own character. Some are suitable for large scale camps and most are suitable for groups such as Guiding or Scouting camps. Several campsites are suitable for family camping and these are separate from the ones used for young people.

We can accommodate Duke of Edinburgh expedition groups of any size.

The park comprises 63 acres of grounds, gardens, woodland and indoor accommodation. There is also a small lake and a bird hide.

PRICES



THE LINK FIELD

7 Campsites across a large field. Plenty of space for all your group camping needs.

MORE INFORMATION

Contact Us
bookings@foxlease.uk



LARGE SCALE EVENTS

Foxlease Park is an excellent venue for a large scale event. The whole site can be booked leaving plenty of space for activities and event facilities

MORE INFORMATION



REST OF SITE

There are 8 additional campsites of varying sizes and locations in the park.

MORE INFORMATION



[BOOK HERE](#)

CAMPING THE LINK FIELD



CAMPSITES

There are seven campsites on The Link Field.

Girlguiding/Scouting rate:
£8.40 person per night
Standard rate:
£10.50 per person per night



Large Site
15 person min
charge



Medium Site
10 person min
charge



ROBINS



- Solid shelter with 1 electrical socket
- Hot water.
- Tap with drinking water
- Hard standing for altar fires

This site has 3 cubicles each containing toilet and wash basin, and 2 showers. Plus one cubicle with a toilet and shower.

MAGPIES



- Solid shelter with 1 electrical socket
- Hot water
- Tap with drinking water
- Hard standing for altar fires

This site has 4 cubicles each containing toilet and wash basin, and 2 showers.



NUTHATCHES



- Solid shelter with 1 electrical socket
- Hot water
- Tap with drinking water
- Hard standing for altar fires

This site has 4 cubicles each containing toilet and wash basin, and 2 showers.

Contact Us
bookings@foxlease.uk

BOOK HERE



CAMPING THE LINK FIELD



CAMPSITES

There are seven Campsites on The Link Field.

Girlguiding/Scouting rate:

£8.40 per person per night

Standard rate:

£10.50 per person per night



Large Site

15 person min charge



Medium Site

10 person min charge



PINE TREES



- Solid shelter with 1 electrical socket
- Hot water
- Tap with drinking water
- Hard standing for altar fires

This site has 4 cubicles each containing toilet and wash basin, and 2 showers.

WOODPECKERS



- Solid shelter with 1 electrical socket
- Hot water
- Tap with drinking water
- Hard standing for altar fires

This site has 4 cubicles each containing toilet and wash basin, and 2 showers.



Contact Us
bookings@foxlease.uk



[BOOK HERE](#)

CAMPING THE LINK FIELD



CAMPSITES

Girlguiding/Scouting rate:

£8.40 per person per night

Standard rate:

£10.50 per person per night

Green field site rate:

£6.30/£8.40 per person per night

L Large Site
15 person min
charge

M Medium Site
10 person min
charge

G Green field Site
15 person min
charge

CEDARS

Groups booking this site will need to pay the minimum for exclusive use of the facilities, otherwise they will be shared.



Facilities:

Please note this is a green field site, there is no solid shelter, electricity, hot water or showers.

- Tap with drinking water
- 5 cubicles with toilets
- 6 cubicles with cold water supplied wash basins

Bookings can be made on a per person basis with no minimum charge

BIRCHES

There are a number of trees within the site and the site has a small shelter. This site is a good for Duke of Edinburgh, patrol camping or those using smaller tents. The trees on this site make it ideal for hammock tents.



Facilities:

- Small solid shelter
- 1 electrical socket
- Hot water
- Tap with drinking water
- Hard standing for altar fires

This site has 3 cubicles each with a toilet and wash basin, and 2 showers.



Contact Us
bookings@foxlease.uk

BOOK HERE



CAMPING REST OF SITE



CAMPSITES

Girlguiding/Scouting rate:

£8.40 per person per night

Standard rate:

£10.50 per person per night

Green Field rate:

£6.30/£8.40 per person per night

L Large Site
15 person min
charge

M Medium Site
10 person min
charge

G Green field Site
15 person min
charge



CHAFFINCH

- Solid shelter with 1 electrical socket
- Hot water
- Tap with drinking water
- Hard standing for altar fires

This site has 4 cubicles each containing toilet and wash basin, and 2 showers.



APPLE TREES

- Solid shelter with 1 electrical socket
- Hot water
- Tap with drinking water
- Hard standing for altar fires

This site has 3 cubicles each with a toilet and wash basin, and 2 showers.



THE BOTHY

- Brick shelter with 1 electrical socket
- Hot water
- Tap with drinking water
- Hard standing for altar fires

This site has 2 cubicles each with a toilet and wash basin, and 2 showers.



GREENFINCH

This site is a green field site and has no shelter, electricity or toilets.

- Tap with drinking water
- Hard standing for altar fires

The toilets and showers for this site are situated 500 metres away from the field.

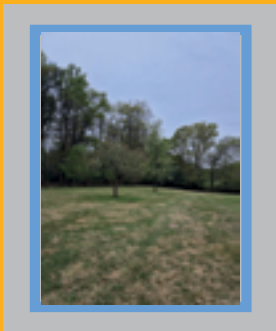


Contact Us
bookings@foxlease.uk



BOOK HERE

CAMPING REST OF SITE



CAMPSITES

Nightingale & Orchards sites are situated together at the top end of Foxlease Park.

Girlguiding/Scouting rate:

£8.40 per person per night

Standard rate:

£10.50 per person per night



Large Site

15 person min charge



Medium Site

10 person min charge



ORCHARDS



Facilities:

- Solid shelter with 1 electrical socket
- Hot water
- Tap with drinking water
- Hard standing for altar fires

This site has 4 cubicles each containing toilet and wash basin, and 2 showers.

NIGHTINGALE

Facilities:

- Solid shelter with 1 electrical socket
- Hot water
- Tap with drinking water
- Hard standing for altar fires

This site has 4 cubicles each containing toilet and wash basin, and 2 showers.



Contact Us

bookings@foxlease.uk



BOOK HERE

LARGE SCALE EVENTS



Oaks and North Meadow campsite are available to be booked together, as part of a large event or site wide bookings.

These sites are generally used for family camping, please enquire if you are interested in these sites for group bookings.



OAKS & NORTH MEADOW

Facilities:

- 2 solid shelters with 1 electrical socket in each
- Hot water to sinks
- 2 Taps with drinking water
- Hard standing for altar fires
- 4 cubicles each containing toilet and wash basin
- 4 showers

Ideal for:

- Large day events
- Large scale camps
- Camps for 100 plus

Bookings:

Please book via the email below

For family camping availability please check www.pitchup.com or email bookings@foxlease.uk



Contact Us

bookings@foxlease.uk



DAY VISITS

AT FOXLEASE PARK



Looking for a day out?

Why not visit Foxlease Park the day or evening.

Our 64-acre playground is in a stunning location in the heart of the New Forest National Park and offers a full range of outdoor activities. Whether you organise your own event or attend one of our themed events, we have a full range of facilities available for use.



BOOK FOR:

Half Day – 4 hours either morning or afternoon.

Full Day – 9am – 5pm

Evenings – 6pm – 10pm

[BOOK HERE](#)

FIELDS AND CAMPSITE DAY USE

Day/Evening visitors will be given exclusive access to their area. Your fee also gives you access to toilet facilities and covers your first 15 participants. Additional participants can join the fun for a 'per person' rate. We have areas ideal for large- or small-scale events. Bring your own equipment and programme or we'll help you find the support you need.



WALLED GARDEN & MARQUEE

The Walled Garden and Marquee booking includes the use of our large marquee which can hold up to 100 people and offers access to the nearby toilet block (though this is not exclusive use). The hire charge includes the first 10 participants. Extra people are charged at a per person rate.



THE BARN DAY HIRE

Large historic hall, which is available to hire for indoor events, includes Kitchen and large outside area. The hall can be set up in various configurations and includes chairs and tables.



CAMPFIRE CIRCLE AND OTHER WARMING THINGS

Fancy a campfire evening? This booking covers the first 10 participants with additional participants charged at a per person rate. We also have available altar fires, wood, and BBQs including coals.

Contact Us

bookings@foxlease.uk



Prices over leaf

FOXIE'S FUTURE

About

Foxlease Park is a 63 acre site near Lyndhurst in the New Forest, offering activities, camping, residential stays and experiences to young people and the local community.

It has been recently acquired by Foxie's Future CIO (RCN 1204342), a charity incorporated in August 2023 following the previous owner's decision to close and sell the site. The charity raised over £4 million to buy the site, which included a significant grant of £1.78 million from Round 3 of the Government's Community Ownership fund, and completed its purchase on 19th November 2024.

Volunteer opportunities are available please email volunteer@foxlease.uk

You can support our fundraising by donating to our current crowdfunding project, which is also linked above or by purchasing something we need from our Amazon Wishlist.

The Trustees of Foxie's Future look forward to welcoming you to Foxlease Park very soon.

A selection of onsite activities are available please see www.foxlease.uk/activities



www.foxlease.uk

Contact Us

bookings@foxlease.uk



[BOOK HERE](#)