



## **GENERAL PRICE LIST**

*Effective January 1, 2025 - but subject to change without notice*

### **REEVES, BASKERVILLE & FRULAND FUNERAL HOMES AND CREMATORY**

Business & Administrative Office

75 North Broadway, Coal City, Illinois 60416

Phone: 815.634.2125 - Fax: 815.634.8018

Website: [www.RFBFuneral.com](http://www.RFBFuneral.com)

● Coal City ●

**Reeves Funeral Homes, Ltd.**

75 N. Broadway, Coal City, IL 60416

Phone: 815.634.2125 - Fax: 815.634.8018

● Gardner ●

**Reeves Funeral Homes, Ltd.**

203 Liberty Street, Gardner, IL 60424

Phone: 815.237.2526

● Morris ●

**Reeves Funeral Home, Ltd.**

408 E. Washington Street, Morris, IL 60450

Phone: 815.942.2500

**Fruland Funeral Home**

121 W. Jefferson Street, Morris, IL 60450

Phone: 815.942.0700

● Wilmington ●

**Baskerville Funeral Home**

700 E. Kahler Road, Wilmington, IL 60481

Phone: 815.476.2181- Fax: 815.476.2271

*The goods and services shown below are those we can provide to our customers. You may choose only the items you desire. However, any funeral arrangements you select will include a charge for our basic services and overhead. If legal or other requirements mean you must buy any items you did not specifically ask for, we will explain the reason in writing on the statement we provide describing the funeral goods and services you selected.*

**[www.RFBfuneral.com](http://www.RFBfuneral.com)**

**Services of Funeral Director & Staff..... \$4500.00**

Our charge includes funeral counseling, arranging visitation and/or ceremony, recording vital notices, handling of flowers, presence at cemetery for interment, and service to family following burial. Also included in this charge are overhead expenses relative to our facility such as insurance, maintenance and utility expenses, secretarial and administrative costs, and equipment and inventory expenses. This fee for our basic services and overhead will be added to the total cost of the funeral arrangements you select.

(This fee is already included in our charges for direct cremations, immediate burials, and forwarding or receiving remains.)

**Embalming..... \$1200.00**

Except in certain special cases, embalming is not required by law. Embalming may be necessary, however, if you select certain funeral arrangements, such as funeral with viewing. If you do not want embalming, you usually have the right to choose an arrangement that does not require you to pay for it, such as cremation or immediate burial.

**Other Preparation of Remains..... \$400.00**

**Autopsy Preparation.....\$400.00**

**Use of facilities and/or staff & equipment (per day)**

For visitation or viewing..... \$650.00

For funeral ceremony..... \$650.00

Weekend accommodation added for services held on Saturday or Sunday ..... \$350.00

**Use of other facilities**

(Administrative areas, reception areas, shelter of remains, and all other miscellaneous furnishings and equipment within the funeral home.) ..... Included

**Automotive Equipment (within 25 mile radius)**

Transfer of Remains to funeral home..... \$400.00

Hearse/Funeral Coach..... \$500.00

Limousine / Sprinter Limousine..... \$600.00

Lead/Safety Vehicle ..... \$200.00

*Additional mileage on all vehicles will be charged at \$2.50 per mile over 25 miles.*

**Shelter of Remains / Overnight Care.....\$50.00 / Day**

This charge per day applies to those remains awaiting cremation or embalming while permits, applications, authorizations, etc. are being processed by governmental agencies. This fee is also assessed when there is a requested family delay, or when remains (embalmed or unembalmed) are in our care and require daily monitoring, refrigeration and/or ongoing preservation intervention.



### **Other Services**

**Caskets** (Range of Prices) ..... \$ 900.00 - \$9,700.00

A complete price list will be provided at the funeral home.

**Outer Burial Containers** (Range) .....\$900.00 - \$22,000.00

A complete price list will be provided at the funeral home.

**Forwarding of Remains to another funeral home** .....\$1800.00

This charge includes local removal of remains, services of staff, securing of necessary authorizations and permits, embalming, use of facilities, and local transportation (but not shipping charges).

**Receiving Remains from another funeral home**.....\$1500.00

This charge includes services of staff, care of remains, use of facilities (excluding visitation and funeral ceremony), local transportation to funeral home, and hearse trip to local cemetery or crematory (within 25 miles).

**Memorial Service**..... \$650.00

**Graveside Service**..... \$650.00

**Direct Cremation** (Range of Prices).....\$2650.00 - \$3400.00

Our charge for a direct cremation (excluding ceremony, visitation, and crematory charges) includes local removal of remains and transportation to crematory, necessary services of staff, securing of authorizations and permits, and basic use of facilities. If you want to arrange a cremation, you can use an alternative container. Alternative containers encase the body and can be made of materials like fiberboard or composition materials (with or without an outside covering). The containers we provide are heavy cardboard.

Direct Cremation with Alternative Container

(Alternative Container is heavy cardboard) .....\$2700.00

Direct Cremation with container provided by client .....\$2650.00

Direct Cremation with minimum casket .....\$3400.00

**Immediate Burials** (Range of Prices) .....\$4700.00 - \$5600.00

Our charge for an immediate burial (excluding ceremony, visitation, outer burial container, and cemetery charges) includes local removal and care of remains, necessary staff services, securing of authorizations and permits, basic use of facilities, and transportation to local cemetery (within 25 miles ).

Immediate Burial with minimum casket .....\$5800.00

Immediate Burial client provides container .....\$4900.00

**Donation to Science**.....\$1600.00

Our charge for donation to science services includes local removal and care of remains, necessary staff services, securing of authorizations and permits, basic use of facilities, and transportation to the Anatomical Gift Association of Illinois in Chicago.

### Miscellaneous Services & Merchandise

**Premium Memorial Stationery Package**..... \$500.00

This includes personalized register book, (150) custom laminated memorial cards, (50) custom acknowledgement cards, memorial candle with flameless module, (10) bookmarks and digital personal Memorial Page online.

**Video Tribute** .....\$200.00

This charge is for up to 500 photos and includes a DVD Copy or Digital Copy on a flashdrive.

Additional Video DVD copies or thumb drive ..... \$15.00 / Each • Digital Video Book ..... \$100.00

**Memorial Webcast / Video** ..... \$50.00

This includes the digital recording of services with option to webcast live or at a delayed time.

Video DVD Copies or thumb drive ..... \$15.00/ each

**Memorial Webpage** .....\$100.00

**Memorial Bookmarks Laminated**.....\$25.00/ six

**Life Celebration Candles** .....\$19.95/ each or \$49.95 with flameless module

**Stock Personalized Acknowledgement Cards** (per quantity of 25) .....\$30.00

**Personalized Laminated Memorial Cards** (per quantity of 50).....\$75.00

**Personalized Register Book** .....\$45.00

**Religious Symbols (Cross / Crucifix)** .....\$25.00

**Temporary Grave Marker** .....\$25.00

**Hairdresser/Barber** .....\$100.00

**Crematory / Cremation Fee** ..... \$450.00 / **AquaGreen Flameless Cremation Fee** ..... \$550.00

**Ceremonial Casket for Cremation** .....\$800.00

**Ceremonial Casket Insert** .....\$200.00

**County Cremation Permit** .....\$100.00 - \$150.00

**Mailing of Cremated Remains** .....\$150.00

**Air Tray or Combination Unit** .....\$200.00

**Cemetery/Graveside Set-Up before 3pm** .....\$600.00 M-F and \$700.00 Sat

**Cemetery/Graveside Set-Up on a SUNDAY or HOLIDAY before noon** .....\$1200.00

(Note: Cemetery set-up charges are set by the vault company and are subject to change)

**Annual Aftercare Package** .....\$300.00

This includes our monthly and quarterly Grief Support Services and Care Letters; Memorial Tree Living Tribute & Holiday Remembrance.

## **FULL SERVICE PACKAGE**

**Traditional Complete Service**.....\$7900.00 (If priced separately \$8950.00)

Package includes the following: Services of funeral director and staff, basic embalming, preparation of remains, use of facilities and equipment, transfer of remains (within 25 miles), and necessary automotive equipment.

### **Terms of Payment**

As the person(s) arranging for funeral services, you accept several obligations for related expenses. At the conclusion of making funeral arrangements, a preliminary Statement of Funeral Goods and Services will be completed and presented for your acceptance. Your signature on the statement will indicate that you accept this obligation personally and in any official capacity you may have. **Therefore to avoid any misunderstandings, Reeves Funeral Homes, Ltd. d/b/a Baskerville Funeral Home has adopted the following terms for payment of funeral expenses.**

- 1)** At the conclusion of the arrangement conference or 1 day prior to performing services, payment in full and/or the amount equal to the initial cash advances may be required.
- 2)** A final statement will be sent to you approximately 5 days after the funeral service. In the event that there is a mutual agreement between client and funeral home to carry the balance beyond the date of the services rendered – Payment in full will be due within 14 days from the date of the arrangement conference.
- 3)** If full payments of the funeral expenses are not received within 14 days of the due date, a late payment penalty of 1.5% per month (18% per annum) in addition to a rebilling fee of \$25.00 will be added to the unpaid balance.
- 4)** In the event that full payment is not received within 90 days of the due date and other arrangements have not been made to pay the account, it will be turned over to legal counsel and pursued by all legal means. Any and all expense relating to legal and collection fees will be added to the unpaid balance, in addition to a rebilling fee \$25.00 per month.
- 5)** Package prices are only valid when all services and all merchandise are purchased from the funeral home.
- 6)** The funeral home reserves the right to require funeral expenses to be paid in full prior to providing any services. Payment for our charges may be made in the form of cash, personal check, money order, or credit card. Credit card transactions will incur a 3% transaction fee.
- 7)** Valid, verified insurance assignments are also welcome, and there will be a 3% service fee added for the services provided by the insurance assignment company we use.

***Notice: These disclosures are made in compliance with the requirements for disclosure as set forth by the Federal Trade Commission.***

## **WE ARE OFTEN ASKED** *“How much is a funeral”*

- As a convenience we have service packages for both burial and cremation options •

The service packages are discounted to include our professional services fees, facility, staff and automotive equipment for outlined service options.

### **Funeral services are broken down into three categories**

1. **Services provided by funeral home.** These are such services, as initial transfer from place of death, professional services of funeral director and staff, embalming and preparations fees, facility charges and automotive equipment to mention a few. These items are outlined on page one of the General Price List.

2. **Merchandise provided by funeral home.** This would include caskets, outer burial containers, cremation containers, urns, keepsakes, stationary or any product offered and provided by the funeral home directly.

3. **Cash advances.** These are costs which the funeral home will advance on behalf of the client family. Examples would be: cemetery fees, crematory fees, flowers, clergy and church honorariums, paid obituary notices, catering, luncheon expenses, etc. The funeral home does not charge for arranging these nor is paid or compensated in any way to advance these expenses. The funeral home does this purely as a courtesy to the family, as to keep all of their expenses on one bill.

- Your funeral director or preneed consultant (if planning in advance) will go over each and every expense with you at the time of arrangements. Items will be lined out on a formal statement of funeral goods and services, and you will be required to sign this statement upon completion. Your signature is to acknowledge that you understand the charges, and therefore agree to pay the outlined expenses. It is a legal binding contract.

- Please note that each and every service can be customized and tailored to one's individual wishes. The packages are presented purely as a tool to use, rather than individually adding each service and merchandise item a la carte.



## CASKET PRICE LIST

These Prices are effective as of December 15, 2024

Prices Subject to Change Without Notice

Reeves & Baskerville Funeral Homes

Coal City -Gardner - Morris - Wilmington

Phone: 815-634-2125 / Fax: 815-634-8018  
Business Office: 75 N. Broadway, Coal City, IL 60416

Website: [www.FrulandFuneralHome.com](http://www.FrulandFuneralHome.com)

### Disclaimer of Warranties

Reeves & Baskerville Funeral Homes makes no representation or warranties regarding the caskets listed below. The only warranties, extended or implied, granted in connection with caskets sold are the express written warranties, if any, extended by the manufacturers thereof. Reeves & Baskerville Funeral Homes hereby expressly disclaim all warranties, expressed or implied, relating to the caskets, including, but not limited to, the implied warranties of merchantability and



**Aegean Solid 32 Ounce Copper  
With Champagne Velvet Interior  
\$8800.00 (Item#: BC483424)**

**Available in 32 Ounce Bronze  
With Champagne Velvet Interior  
\$9700.00 (Item#: BC772524)**



**Marsellus**

**Prominence  
Solid Maple**

**Construction with  
Champagne Velvet  
and Flex Corners  
\$6500.00**

**(Item#: BC681324)**

*Also Available in a  
Solid Hardwood  
with Satin Cherry  
Finish*

**MARSELLUS  
SYRACUSE  
\$5500.00**

**(Item #:BC267124)**



**The Pearson  
Cherry Veneer  
Construction  
Velvet Interior  
& Flex Corners  
\$4800.00**

**(Item#: BC999124)**



**Chicago  
Brunswick  
Oak Construction  
with Velvet**

**Interior  
\$3900.00  
(Item#: CC358124)**



**The Woodhaven  
Pecan Veneer  
Construction  
Champagne Velvet  
with Flex Corners  
\$3700.00  
(Item#: BC995124)**



**The Riley  
Veneer  
Construction  
with  
Ivory Linwood  
Interior & Flex  
Corners  
\$3500.00  
(Item#: BC891124)**



**The Bailey  
Veneer  
Construction with  
Kahki Linwood  
Interior & Flex  
Corners  
\$3500.00  
(Item#: BC791124)**





**The Clifton  
Hardwood  
Construction with  
Rosetan Crepe  
and  
interchangeable  
Overlay  
\$2900.00  
(Item#: BC998024)**



**Fireside  
Reclaimed  
Fine Distressed  
Hardwoods  
Oatmeal Duck  
Cloth Interior  
with  
Interchangeable  
Overlay  
\$4500.00  
(Item#: BC692223)**



**The Dryden  
Veneer  
Construction with  
Rosetan Crepe  
Interior & Flex  
Corners**

**\$2700.00**

(Item#: BC997024)

Also available in a  
red finish  
(Item#:897024)



**The Lyra  
Veneer  
Construction with  
Rosetan Crepe  
Interior  
\$2400.00  
(Item#: BC996024)**

Also available in a  
dark stain  
(Item#:896024)





**061 Burnished Silver 18  
Gauge Steel  
Construction**

**Velvet Interior  
With Cap Panel**

**Personalization  
\$4000.00**

(Item#: BC397124)

Also available in Cashmere  
(Beige) and Tuscany Orchid  
Silver



**UG-1 / UG-2  
Stainless Steel  
Construction  
Velvet Interior &  
Flex Corners  
\$4400.00  
(Item#: BC9991024)**

Available in Golden Sand  
and Silver Sapphire



**SO-1 Sand**  
**20 Gauge Steel**  
**Construction with**  
**Crepe Interior and**  
**Cap Panel**

**Personalization**

**\$3000.00**

(Item#: BC094924)

Available in Ocean Blue  
And Carnation Blush



**Pieta**  
**18 Gauge Steel**  
**Construction**  
**Velvet Interior**  
**\$3600.00**

(Item#: CC894124)

**AVAILABLE IN**  
**Blue Brushed**  
**Copper Brushed**  
**Gold Brushed**  
**Orchid Brushed**  
**Silver Brushed**  
**Bronze Brushed (Shown)**



**M39 Midnight**  
**20 Gauge Steel**  
**Construction**  
**Velvet Interior with**  
**Flex Corners**  
**\$3000.00**

(Item#: BC948024)

Also available in  
Auburn  
Blue  
Silver  
White  
Green



**The Virgo Copper**  
**18 Gauge Steel**  
**Construction with**  
**Crepe Interior and**  
**Available Decorative**  
**Kits (+\$50.00)**  
**\$2900.00**  
(Item#: BC092724)

Also available in  
Blue, White on white  
White with pink





**The Argo**  
**18 Gauge Steel**  
**Construction**  
**Crepe Interior with**

**Available**  
**Decorative Kit**

**\$2700.00**

(Item#: BC9950024)

**Also available in**  
**Sand, Silver**  
**Black**



**The Spectra**  
**20 Gauge Steel**  
**Construction**  
**Non-Gasketed with Crepe**  
**Interior and Available**  
**Decorative Kit (+\$50.00)**  
**\$2300.00**

(Item#: BC0964024)

**Also available in**  
**Orchid, Black**  
**White and Blue**



**The Apollo  
20 Gauge Steel  
Construction Non-  
Gasketed with  
Crepe Interior  
\$1600.00**

(Item#: BC0934024)

Also available in Silver,  
Black, Copper and  
White with Pink



**Hercules 28"  
Extended Size  
20 Gauge Steel  
Construction  
Non-Gasketed with  
Crepe Interior  
\$2600.00**

(Item#: BC9470024)

Also available in  
Orchid, Black  
Blue and White

**Also  
Available in  
Extended 32"  
\$3500.00**

(Item#: BC03695124)  
Requires Oversize  
Outer Burial  
Container



**Doeskin  
Corrugated  
Fiberboard**

**Construction  
with Crepe**

**Interior**

**\$900.00**

**(Item#: BC954024)**



*Additional Caskets are available in various other metals including Bronze, Copper, Stainless Steel, 16 Gauge Steel, 18 Gauge Steel and 20 Gauge Steel. Also all wood species, reclaimed options, sustainable and biodegradable units.*



## LifeSymbols® & Display Medallions

Below is a sample of personalization options included with some products. They can be displayed on the corners or cap panel as indicated in the description and can be kept as mementos after the ceremony.

Choose from over 70 options to highlight your loved one's interests, hobbies or affiliations. Please speak with your funeral professional to see additional options.

### Spirituality



LifeStories® Crucifix or Cross



Cross or Celtic Cross



Our Lady of Guadalupe



Angel



Praying Hands



Pieta

### Relationships



Mom



Dad



Son



Sister



Wife



Husband

### Affiliations



Army



Navy



Air Force



Marine Corps



Coast Guard



Honor & Courage

### Hobbies & Interests



Gold Rose



Music



Coastal



Bass



Majestic



Bouquet



In God's Care



Going Home



May the Work I've Done...



23rd Psalm



Butterfly



Mother/Grandmother



Father/Grandfather



Grandma



Grandpa



Traits



Eagle



Masonic



Truck Driver



Protect & Serve



Firefighter



Wheat



Western



Golf



Cabris Antique Nickel



Cabris Tiffany Gold

LifeSymbols not available on all caskets shown.

Additional LifeSymbols are available for \$45.00 / each

**Outer Burial Container Price List**

**Effective December 15, 2024**

**Prices subject to change without notice**

*IN MOST AREAS OF THE COUNTRY, STATE OR LOCAL LAW DOES NOT REQUIRE THAT YOU BUY A CONTAINER TO SURROUND THE CASKET IN THE GRAVE. HOWEVER, MANY CEMETERIES REQUIRE THAT YOU HAVE SUCH A CONTAINER SO THAT THE GRAVE WILL NOT SINK IN. EITHER A GRAVE BOX OR A BURIAL VAULT WILL SATISFY THESE REQUIREMENTS.*

**Premium Triple Reinforced Ultimate Burial Vault**

**The Wilbert Bronze ..... \$22,000.00**

**Premium Concrete Burial Vaults**

**Bronze Triune ..... \$6,300.00**

**Copper Triune..... \$6,300.00**

**Stainless Steel Triune.....\$4,300.00**

**Standard Plus Concrete Burial Vault**

**Venetian..... \$2,700.00**

**Standard Concrete Burial Vault**

**Continental..... \$2,100.00**

**Basic Concrete Burial Vault**

**Monticello.....\$1,800.00**

**Minimum Outer Burial Container (non-sealed)**

**Gravebox..... \$900.00**

*DISCLAIMER OF WARRANTIES: Reeves & Baskerville Funeral Homes MAKES NO REPRESENTATION OR WARRANTIES REGARDING THE OUTER BURIAL CONTAINERS LISTED ON THE OUTER BURIAL CONTAINER PRICE LIST. THE ONLY WARRANTIES, EXPRESSED OR IMPLIED, GRANTED IN CONNECTION WITH OUTER BURIAL CONTAINERS SOLD ARE THE EXPRESS WRITTEN WARRANTIES, IF ANY, EXTENDED BY THE MANUFACTURERS.*

**PLEASE NOTE:**

**Additional Graveside  
Service Set-up Fees are  
assessed after 3:00 p.m.  
(Monday-Friday), and on  
Saturdays, Sundays and  
on Holidays.**

*Full Graveside Service Setup*



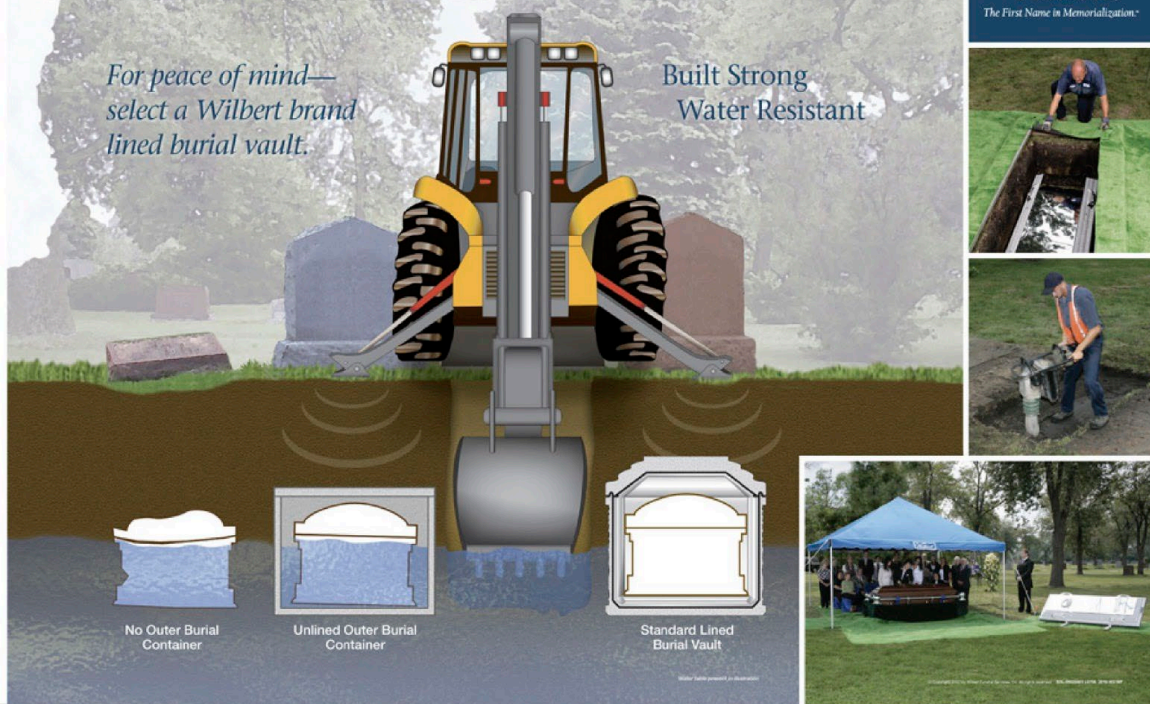


# Wilbert Lined Burial Vaults

*For peace of mind—  
select a Wilbert brand  
lined burial vault.*

**Built Strong  
Water Resistant**

*Wilbert.*  
The First Name in Memorialization™



## Premium Protection

The Wilbert Bronze®



Bronze Triune®



Copper Triune®



## Standard Protection

Stainless Steel Triune®



Cameo Rose® Triune®



Veteran Triune®



## Basic Protection

Venetian®



Continental®



Monticello®



Salute®





## Cremation Services Packages and Merchandise

Reeves, Fruland & Baskerville Funeral Homes are honored to give the families that we serve the confidence in knowing that we own and operate our own crematory. Transitions Crematory, Ltd. is located within our Gardner Funeral Home, and you can have the piece of mind knowing that your our loved one never leaves our care. We can also allow the capability to allow cremation witnessing and provide time sensitive cremations.

When choosing cremation, there are a wide array of service options.

In order to assist you in the planning process, we have compiled service packages, which vary from cremation without any memorialization to complete full service traditional services, which can be held before the cremation process takes place.

One of our licensed funeral directors, or pre-planning consultants, if making plans in advance - are happy to thoroughly explain each option available. No two families are alike, and funeral services should reflect the uniqueness of the individual family.

# Cremation Option Packages

*When selecting cremation options,  
we believe that those who compare our cremation procedures,  
facilities, professional staff, prices and our reputation for excellence  
will conclude that we offer exceptional quality, value and peace of mind.*

**Traditional Cremation Service**..... \$8500.00 (If priced separately \$9950.00)

Package includes the following: Services of funeral director and staff, basic embalming, preparation of remains, Hardwood Ceremonial Casket and Insert, use of funeral home and equipment over 2 Days, transfer of remains (within 25 miles), necessary automotive equipment, cremation fee, basic urn and our full aftercare services.

**If Service at Church / Alternative Location or Going Graveside** ..... \$9000.00

**Private Viewing (up to one hour) and Cremation** .....\$4800.00 - (If priced separately \$5250.00)

This includes services of funeral director and staff, basic embalming, preparation of remains, cremation viewer, immediate cremation, crematory fee, basic urn and our full aftercare services. **Private Viewing, Cremation and Memorial** .....\$5450.00

**Immediate Cremation with Memorial**.....\$4200.00 - (If priced separately \$4500.00)

This includes immediate cremation, crematory fee and basic urn; funeral director, staff and equipment for memorial service at our funeral home and our full aftercare services.

**If Memorial at Church or Alternative Location or going Graveside** ..... \$4700.00

**Full Service Immediate Cremation**.....\$3300.00 - (If priced separately \$3500.00)

This includes immediate cremation, crematory fee, basic urn and our full aftercare services.

## **PACKAGES DO NOT INCLUDE**

**County cremation permits which range from \$100.00 - \$150.00**

**Outer receptacle, (which is required by the crematory) ranging from \$50.00 to \$6400.00.**

Additional urn selections are also available in a price range of \$100.00, \$200.00, \$300.00

**Visitation at Crematory for viewing by immediate family for the beginning of the cremation process (up to 30 minutes)** .....\$300.00

**Flameless Green Cremation Option:** Can be added to any one of the above cremation packages for an additional \$100.00



**HARDWOOD CEREMONIAL CASKET for  
VISITATION/VIEWING BEFORE CREMATION.**

Cremation Caskets and Viewers are also available.



**Basic Minimum  
Alternative  
Container  
Cardboard  
\$50.00**



Shown Closed



**Vista Mountain™**

Printed Corrugated Fiberboard Construction



Shown Closed



**Vista Rustic™**

Printed Corrugated Fiberboard Construction  
Crepe Interior

**Vista  
Rustic or  
Mountain  
Corrugated  
Fiberboard  
Construction with  
Graphic Crepe  
Interior  
\$395.00  
(Item#SM561023)**

**Chicago Emerson**  
**Cardboard**  
**Construction**  
**Plain Crepe**  
**Interior \$750.00**  
**(Item#:CC573024)**



**Chicago Gray**  
**K-Flair**  
**Corrugated**  
**Fiberboard**  
**Construction**  
**Crepe Interior**  
**\$800.00**  
**(Item#:CC993024)**





**The Dryden  
Veneer  
Construction with  
Rosetan Crepe  
Interior & Fl ex  
Corners  
\$2700.00  
(Item#: BC997024)**



Also available in a  
red finish  
(Item#:897024)

**The Lyra  
Veneer  
Construction with  
Rosetan Crepe  
Interior  
\$2400.00  
(Item#: BC996024)**

Also available in a  
dark stain  
(Item#:896024)





Has Partnered With



4146 B. Place NW – Auburn, Washington 98001

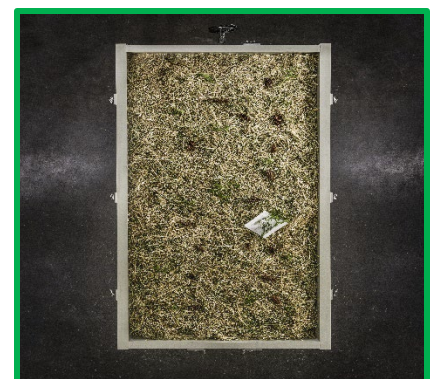
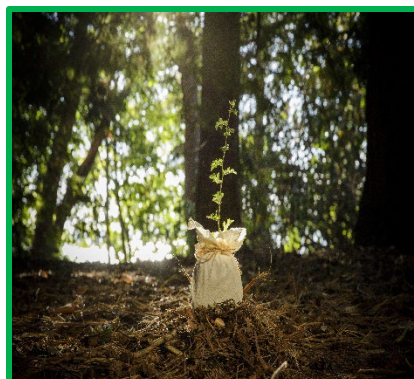
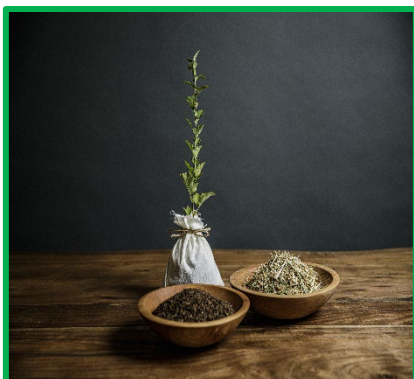
206-888-4663 / [www.ReturnHome.com](http://www.ReturnHome.com)

To Provide **Terramation** (Natural Organic Reduction)  
An earth-friendly alternative to cremation and burial, which gently  
transforms our loved ones into life-giving soil.

#### **DIRECT TERRAMATION .....\$7850.00**

Includes the basic services of a funeral director and staff, transfer of remains to the funeral home, preparation of remains and necessary ice packs, basic combination air tray required for shipping via airlines, transfer of remains to Chicago based airport for flight to Seattle, Washington; disposition of remains through the process of Terramation (Natural Organic Reduction), packaging and pick up of soil at Auburn facility, shipping of a token portion of Terramated remains to any US address, state taxes and county fees. This does not include actually shipping via airlines which is based on weight.

Additional Laying-In Ceremony at the Return Home facility, as well as additional collection and shipping options available upon request.





# Reeves Fruland Baskerville

FUNERAL HOMES AND CREMATORY

A290  
\$325



A292  
\$325



A297  
\$325



A298  
\$325



A299 \$325



M299 \$175



K299 \$70



T674 \$100



H680 \$90



# BLESSING

*Keepsakes Available In Most Urns Featured*  
**Urns Etc. Inc.**



# WINGS OF HOPE



A1040 \$375



M1040 \$225



A1041 \$375



K1040 \$85



A1042 \$375



A1043 \$375



# WINDSONG



5322L \$300



5330L \$325



5325L \$300



5321L \$300



5320L \$300



5321K \$175



5321HS \$65  
HEART \$125



5320K \$175



5320HS \$65  
HEART \$125



# THE DROP



**A584 \$375**



**A583 \$375**



**H586 \$90**



**A586  
\$375**



**M586 \$198**



**K586 \$80**



**A587 \$375**

**ENGRAVING  
\$60.00**



**A585 \$375**



# FLORAL



**C320L \$325**



**C321L \$325**



**C322L \$325**



**C323L \$325**



**C455L \$275**



**C456L \$275**



**C458L \$350**



**C457L \$350**



# HAND PAINTED

---

## \$300

---



IUTM116



IUTM112



IUTM110



IUTM115

# MOTHER OF PEARL

---

## \$300

---



LUMOP118



LUMOP120



LUMOP119 Red



LUMOP109



LUME111 Black



LUMOP105



LUMOP121



LUMOP107

**Urns Etc., Inc.**



# ARIA & CLOISONNÉ



5243L  
\$415



5245L  
\$415



5244L  
\$415



5242L  
\$415



5240L  
\$415



5241L  
\$415



C163L \$640



C162L \$640



C161L \$640



C160L \$640

**Urns Etc. Inc.**



# ELEGANT CLASSICS

A230 \$275



A231 \$255



5595L \$315



A250 \$275

A251 \$275

A218 \$325



A217 \$175



2804L \$325

Urns Etc. Inc.



# TRADITIONAL CLASSICS



A215 \$175



A261 \$175



A210 \$175



A216 \$175



A260 \$175



A211 \$175



A212 \$175



A214 \$175



A213 \$175





# WOOD



800237 \$480



CMB820L \$350



800246 \$620



709 MH \$355



800224 \$595



706NPT \$195



800110 \$610



800197 \$525



800191 \$540

Urns Etc. Inc.





IUM127 \$225

IUM128 \$225

IUM129 \$225

IUM130 \$225

# VETERAN



718/10 \$440



CMB801L \$200



808 FE \$550



2823L \$290



707C \$325



2822L \$290



# CULTURED MARBLE



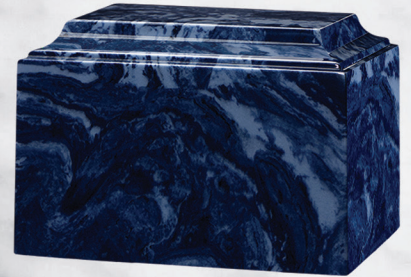
**CUBE \$265**



**WINDSOR \$290**



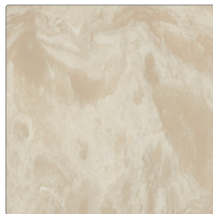
**GEORGIAN \$315**



**TUSCANY \$265**



**WHITE**



**CREME**



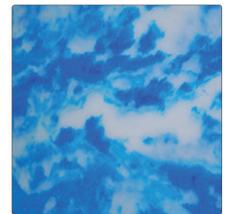
**CARNATION**



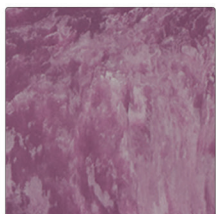
**PINK**



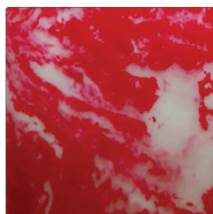
**WEDGEWOOD**



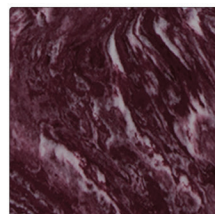
**SKY**



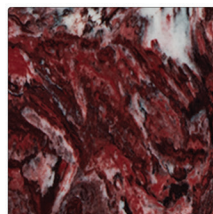
**PURPLE**



**RED**



**MERLOT**



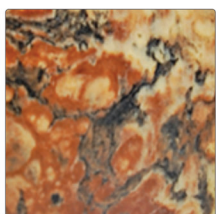
**FIRE ROCK**



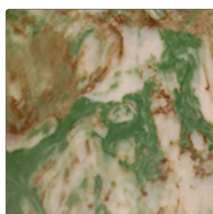
**NAVY**



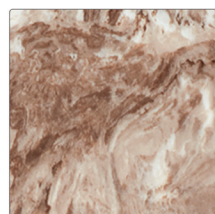
**MISSION**



**GOLD**



**CAMO**



**CAFE**



**PERLATO**



**GREEN**



**BLACK**



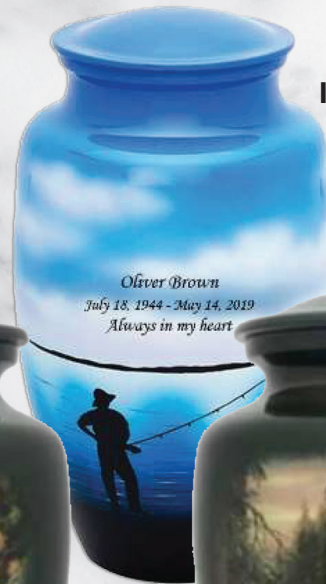
# SPORTS



7742-10  
\$295



7808-10  
\$200



IUHP116  
\$300



2717L \$215



IUTM129 \$300



IUTM130 \$300



IUSC119 BASEBALL  
\$425



IUSC119 BASKETBALL  
\$425



IUSC119 VOLLEYBALL  
\$425



IUSC119 GOLF  
\$425



IUSC119 SOCCER  
\$425



IUWC102 \$250



IUWC106 \$250



IUWC107 \$250



# BIODEGRADABLE



**BA111 \$225**



**BA120 \$175**



**BA110 \$200**



**SLT03 \$525**



**BC131 \$130**



**BA100 \$165**



**BA121 \$175**



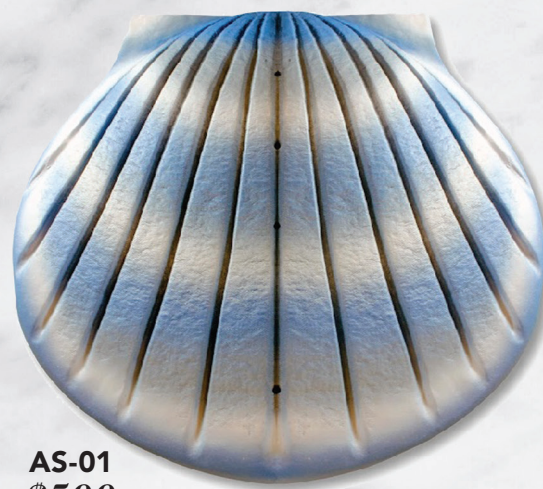
**BC130 \$130**



**SGCB  
\$390**



**4110AB  
\$200**



**AS-01  
\$500**



# COMPANION



**A563 \$500**



**A562 \$500**



**A1111 \$500**



**A1100 \$750**



**700C \$420**



**700CPC \$430**



**700W \$420**



**DOUBLE TUSCANY PERLATO  
\$470**



**800 SL \$765**



**DOUBLE TUSCANY MISSION BLACK  
\$470**



**CMB31 \$290**



**CMB30 \$290**



**CMB32 \$290**



# YOUTH



**M1012 \$175**



**M1010 \$175**



**M1011 \$175**



**P1003 \$175**



**P1001 \$175**



**P1002 \$175**



**M667 \$175**



**M668 \$175**



**M588 \$200**



**M589 \$200**



**MC5502-20 \$140**



**MC5501-20 \$140**



**MC5500-20 \$140**

**Urns Etc. Inc.**



All Stainless Steel Pendants \$48.00

(Engraving if Available is +\$35.00)

## Pendants

Personalize with Initials



"Free chain  
included with  
each pendant"

*Infinity Stainless Steel Jewelry is  
high quality and will not tarnish.*



IUPN100



IUPN101



IUPN102



IUPN103



IUPN104



IUPN105



IUPN106



IUPN107



IUPN108



IUPN109



IUPN110-new



IUPN111



IUPN112



IUPN113



IUPN114



IUPN115



IUPN116



IUPN118



IUPN119-G



IUPN119-S



IUPN120



IUPN121



IUPN122



IUPN123



IUPN124



IUPN125



IUPN126



IUPN127



IUPN128



IUPN129



IUPN130



IUPN131



IUPN132



All Stainless Steel Pendants \$48.00  
(Engraving if Available is +\$35.00)

## Pendants

Personalize with Initials



"Free chain  
included with  
each pendant"

*Infinity Stainless Steel Jewelry is  
high quality and will not tarnish.*



IUPN133



IUPN134



IUPN135



IUPN136



IUPN137



IUPN138



IUPN139



IUPN140



IUPN141



IUPN142



IUPN143



IUPN144



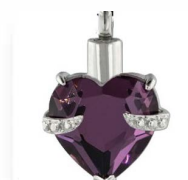
IUPN145



IUPN147



IUPN146



IUPN148



IUPN149



IUPN150



IUPN151



IUPN152



IUPN153



IUPN154



IUPN155



IUPN156



IUPN157



IUPN158



IUPN159



IUPN160



IUPN161



IUPN163



IUPN164



IUPN165



IUPN166



All Stainless Steel Pendants \$48.00

(Engraving if Available is +\$35.00)

## Pendants

Personalize with Initials



"Free chain  
included with  
each pendant"

*Infinity Stainless Steel Jewelry is  
high quality and will not tarnish.*



IUPN167



IUPN168



IUPN169



IUPN170



IUPN171



IUPN172



IUPN173



IUPN174



IUPN175



IUPN176



IUPN177



IUPN178



IUPN180



IUPN181



IUPN179



IUPN182



IUPN183



IUPN184



IUPN185



IUPN186



IUPN187



IUPN188



IUPN189



IUPN189-colors



IUPN190



IUPN191



IUPN192



IUPN193



IUPN194



IUPN195



IUPN196



IUPN197



IUPN198



All Stainless Steel Pendants \$48.00  
(Engraving if Available is +\$35.00)

## Pendants

Personalize with Initials



"Free chain  
included with  
each pendant"

*Infinity Stainless Steel Jewelry is  
high quality and will not tarnish.*



IUPN200



IUPN199



IUPN201



IUPN202



IUPN203



IUPN204



IUPN206



IUPN207



IUPN208



IUPN209



IUPN210



IUPN211



IUPN213



IUPN217



IUPN215



IUPN216



IUPN214



All Stainless Steel Pendants \$48.00  
(Engraving if Available is +\$35.00)

## Key chain



IUKY100



IUKY101



IUKY102



IUKY103



IUKY104



IUKY106



IUKY107



IUKY108



IUKY109



IUKY110



IUKY111



IUKY112

*Infinity Stainless Steel  
Bracelets and Key  
Chains are high quality  
and will not tarnish.*

## Bracelet

All Stainless Steel Bracelets \$148.00 (Engraving if Available is +\$35.00)



IUBR101



IUBR104



IUBR102



IUBR105



IUBR106



IUBR107

*Each Bracelet and Key Chain opens to allow a  
small amount of cremated remains, crushed flower, a  
wisp of hair or soil or sand from a memorable location.*





## Silver Pendant

Personalize with Initials



All Silver Pendants \$108.00  
(Engraving if Available is +\$35.00)

"Free chain  
included with  
each pendant"



IUSPN100



IUSPN101



IUSPN102



IUSPN103



IUSPN104



IUSPN105



IUSPN106



IUSPN107



IUSPN108



IUSPN109



IUSPN110



IUSPN111



IUSPN112



IUSPN113



IUSPN114



IUSPN115



IUSPN116



IUSPN117



IUSPN118



IUSPN119



IUSPN120



IUSPN121



IUSPN122



IUSPN123



IUSPN124



IUSPN125

*Each Sterling Silver Pendant opens to  
allow a small amount of cremated remains,  
crushed flower, a wisp of hair or soil or sand  
from a memorable location.*

All Gold Plated Pendants \$179.00  
(Engraving if Available is +\$35.00)

## 24K Gold Plated Sterling Silver

*Infinity's 24K Gold Plated Sterling Silver Pendants are a beautiful way to cherish the memories of your loved one.*

Personalize with Initials



IUSPN100-G



IUSPN101-G



IUSPN102-G



IUSPN103-G



IUSPN104-G



IUSPN105-G



IUSPN106-G



IUSPN107-G



IUSPN108-G



IUSPN109-G



IUSPN110-G



IUSPN111-G



IUSPN112-G



IUSPN113-G



IUSPN114-G



IUSPN115-G



IUSPN117-G



IUSPN120-G



IUSPN121-G



IUSPN122-G



IUSPN123-G

"Free chain included with each pendant"

*Each 24K Gold Plated Sterling Silver pendant opens to allow a small amount of cremated remains, crushed flower, a wisp of hair or soil or sand from a memorable location.*