

**1448 Algonquin Road  
Palatine, IL 60067**

**AVAILABLE SPACE:**

- **1,654 SF**  
**West End Cap**

**4 MONTHS FREE RENT!!!**  
**\$29 per SF NET**

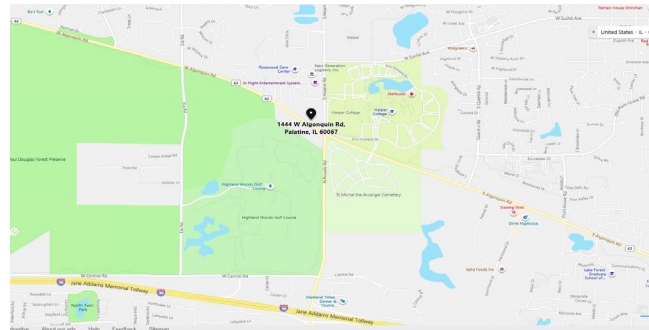


**PROPERTY HIGHLIGHTS:**

- **NEW** Development in Palatine
- Next Door to HIGH VOLUME  
**The PRIDE of Palatine BP & MOTW**  
Coffee and Pastries
- Approximately 1 Mile North of NEW  
I90 Roselle Road Ramp
- Directly across from **Harper College**
- Site has **FULL ACCESS** to Roselle Road  
and Algonquin Road
- Last remaining Unit

**LOCATION:**

- North West Corner of  
Algonquin Rd & Roselle Road
- Directly North of Roselle Road  
Exit on I94



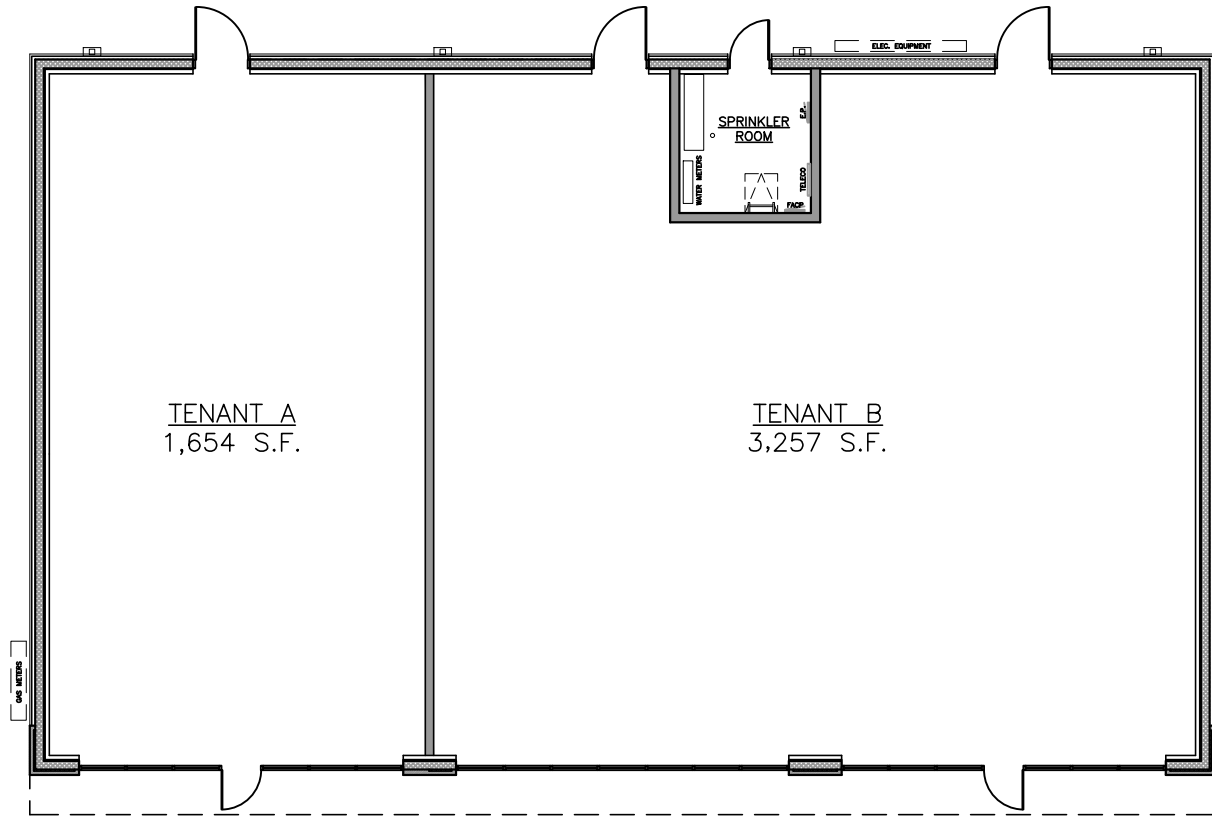
**DEMOGRAPHICS:**

Radius:	<u>1 Mile</u>	<u>3 Mile</u>	<u>5 Mile</u>
Population:	3,085	81,588	227,043
Avg. Income:	\$161,607	\$111,432	\$107,243

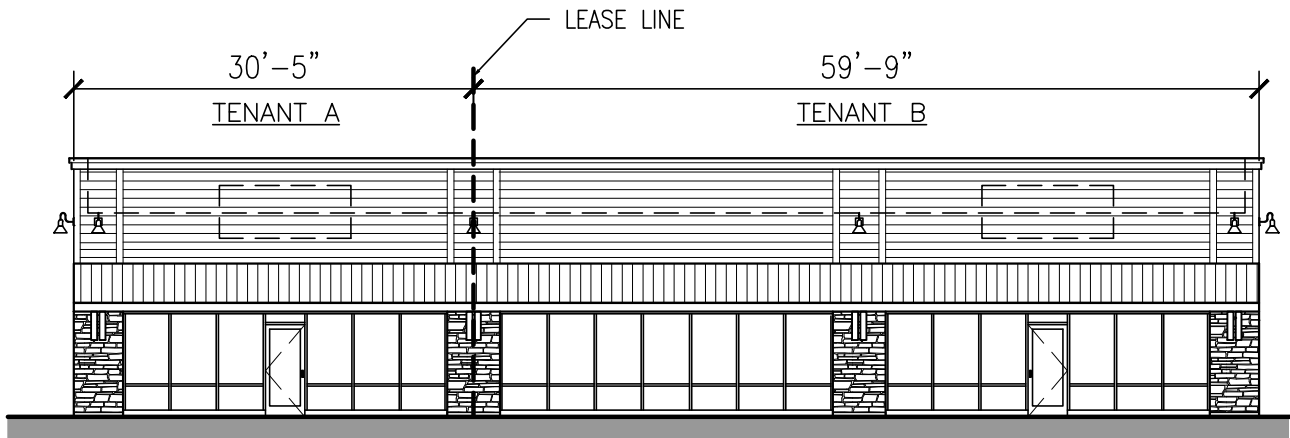
**Traffic Count**

- 57,500 vehicles per day

# EXHIBIT A



TENANT PLAN



TENANT ELEVATION



The PRIDE



bp

reg.

3.399

BP gasoline

with Invigorate

diesel

2.979

HIGH FLOW DIESEL

\$3 CAR WASH

URBAN COUNTER

Dogs. Burgers. Salads

tcbv frozen yogurt

BEER WINE

plus SPIRITS

TENANT PANEL

TENANT PANEL

