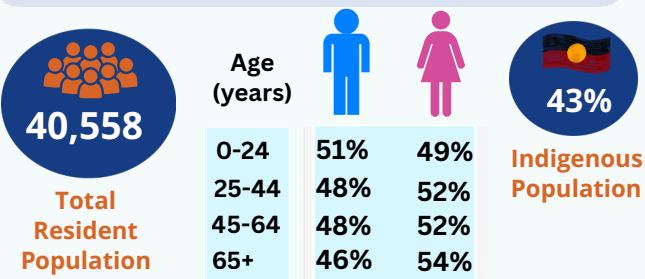


## Central Australia

This region comprises of the Local Government Areas of Alice Springs, Central Desert, Yulara and MacDonnell respectively.

### Resident Population (2021) by age, gender and Indigenous status



Central Australia's Population is expected to be 43,617 in 2031.

### Examples of Occupations in Demand for Top 5 Industries (2025)



Total Workforce  
**21,769**  
(August 2025)

### Vocational Education and Training (VET)

(January - December 2024)

**3,945**

VET Enrolments  
7% decrease since 2023

**920**

VET Completions  
14% decrease since 2023

### Top 3 Qualifications by Enrolments



Cert III in Individual Support



Cert III in Business



Certificate III in Early Childhood Education and Care

### Top 3 Occupation Pathways by Enrolments



Welfare Support Workers

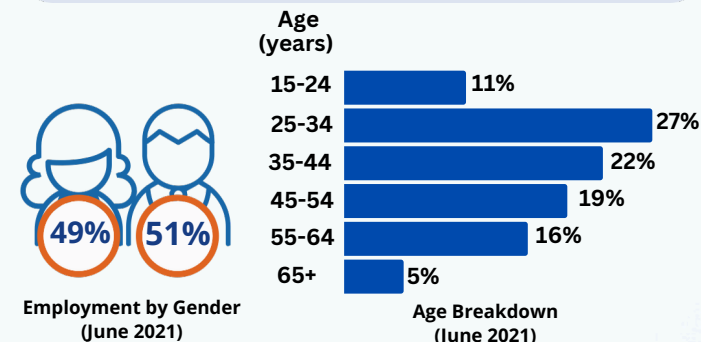


General Clerks



Nursing Support and Personal Care Workers

## Workforce



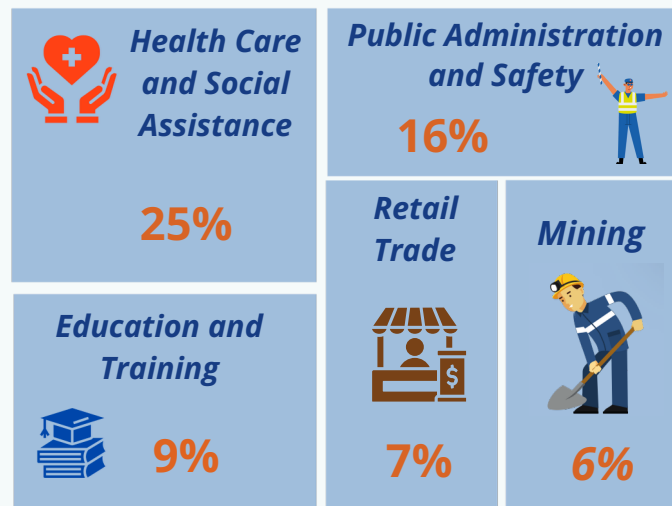
**2,170**

Total Registered Businesses  
(2024)

**4%**

Unemployment Rate  
(June 2025)

### Top 5 Industries by Workforce Count (2023/24)





# Workforce Challenges



Shortage of locally skilled workforce.



High employee turnover



Limited access to training



Difficulty in attracting workers



High relocation costs



# Workforce Solutions



Providing in-house training for workers



Work visa sponsorship for overseas skilled workers



Providing flexible working arrangements



More government funding towards employee counselling and group therapy



Incentivising high performance workers at the workplace

*Disclaimer: The information and statistics are provided in good faith; it does not constitute professional advice. ISACNT used a variety of reliable sources at different times to create this snapshot, and while we believe this to be reliable and accurate, readers should make their inquiries before making any decisions.*

## WHAT DOES ISACNT DO

- Workforce development
- Support training package development
- Promote vocational education and training
- Provide advice and intelligence



## FOR MORE INFORMATION CONTACT ISACNT

☎ 08 7913 7500  
✉ [admin@isacnt.org.au](mailto:admin@isacnt.org.au)  
🌐 [www.isacnt.org.au](http://www.isacnt.org.au)  
🏠 Suite 201, Level 2, The Avenue, 12 Salonika St, Parap

