



Better Care for Better Life. InfuLife®

Why Choose InfuLife®?

A Clear Choice for Accuracy, Reliability and Ease of Use.

- **More Accurate:** (+/-9 to 12%) vs +/- 15 to 20%
- **Designed & Built Not to Leak:** Due to reduced opening, compression seal, and lesser fill pressure.
- **Resolution of Flow:** Provides a more consistent deliver of medication resulting in better healthcare and accuracy.
- **Size Color Coding:** Easy identification by pharmacy staff for filling.
- **Easier to Fill:** 50% less pressure required to fill by hand with 50 ml syringes. Less possibility for carpal tunnel and easier on equipment.



Better Care for Better Life. InfuLife®

The InfuLife®

Introducing A Superior Alternative for the growing infusion market.

InfuLife® offers more accurate, reliable, simpler, and cost-effective infusions.

- **US FDA Cleared (510k K240624)**
- **Patented design for enhanced safety and efficiency**
- **Developers of InfuLife played major roles in Epic, Eclipse and Easypump development.**
- **Addresses critical flaws in competing products**





Better Care for Better Life. InfuLife®

InfuLife®: A Patented Design for Enhanced Safety and Efficiency.

- **InfuLife®:** Only one opening, Compression Sealed.



- **Competitors:** Two openings, an O-Ring on each side.





Better Care for Better Life. InfuLife®

- **InfuLife® Accuracy:** +/- 9% on high flow rates and +/- 12% on low flow rates.
- **Competitor Accuracy:** From +/- 15-20%.

Delivering
Unmatched
Accuracy for
Patient Safety

You Choose: Which pump is more accurate, less likely to leak, and easier to fill?



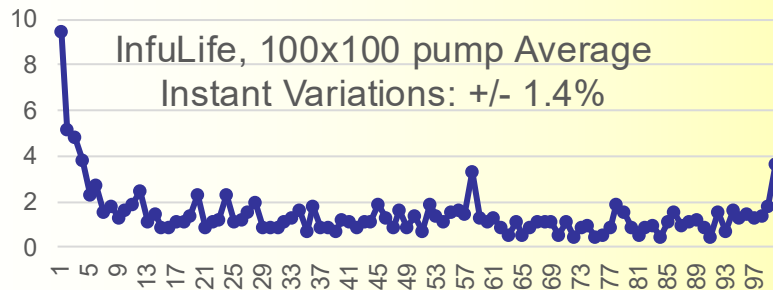
Brand	InfuLife®	Easypump®	SmarteZ®	OnQ®
Manufacturer	First Medical Source	B. Braun	Epic Medical	Avanos
Accuracy Rating	+/- 9 to 12%	+/- 15%	+/- 15%	+/- 15%
Intended use	Antibiotics, Chemotherapy, Pain Management	Same	Same	Same
510k	K240624	K081905	K151650	K131249



Better Care for Better Life. InfuLife®

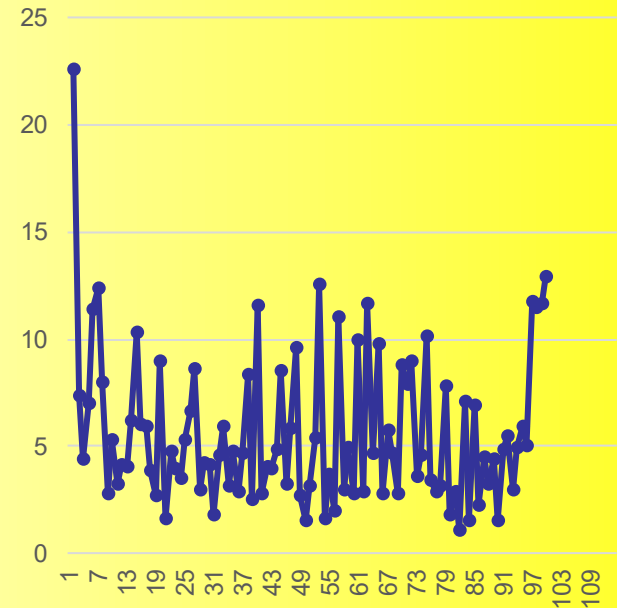
Accuracy comes with improved Resolution of Flow Rate

InfuLife® Instantaneous Variation: +/- 1.4%.
Competition Instantaneous Variation: +/- 5.5%.



Instant Variations, InfuLife, 100x100

Competition, 100x100 pump:
Average Instant Variations:
+/- 5.5%



Instant Variations, Competition, 100x100



Better Care for Better Life. InfuLife®

Filling Port 50% larger



Filling the InfuLife device with 50 ml syringes are 50% easier than the typical elastomeric.

InfuLife: 6.5 psi

Competitor: 13.5 psi



Additional training

Why Elastomeric disposable pumps vs Electromechanical pumps?

Advantages:

- 1) Ease of use, no programming of pump.
- 2) No maintenance of Elastomeric pump. One of the biggest problems is keeping records of maintenance for electromechanical pumps.
- 3) Less chance of cross contamination to patients from a single use pump vs multi use pump.
- 4) **Minimal training** for patient and clinician.
- 5) Portable, less weight, no alarms and no batteries or recharging.
- 6) No urgent need for on call.



Additional training

Why Elastomeric disposable pumps vs Electromechanical pumps?

Disadvantages:

- 1) Possibility of inaccurate flow rate.
- 2) No pump history log of infusion.
- 3) Hard to detect drug delivery issues in the absence of alarms.
- 4) Fixed reservoir volume.



Better Care for Better Life. InfuLife®

Market Leaders for Alternate Site Care – The Competition.

- All have O rings (likely some will leak), all vary in accuracy, and all do not have the TIGHT resolution of flow.

- **Epic** – SmarteZ is used for Antibiotics, Chemo and Pain.
 - Market share leader



- **Avanos** – Eclipse for Antibiotics, Homepump C Series for Chemo, and Pain ON Q
 - Most expensive.



- **B Braun** – EasyPump is used for Antibiotics, Chemo and Pain
 - Epic used this as their predicate device





Better Care for Better Life. InFuLife®

- **Clinical Validating Process**

- 1) Pharmacy - Evaluate ease of filling/overall integrity of product.

- a. In-service staff on filling and handling recommendations.

- 2) Nursing – In- service staff on clinical advantages.

Evaluations will consist of the following:

Time frame: 1-2 weeks with much hand holding and follow up every 2-3 days to check for feedback

****Note:** An understanding of the pharmacy and nursing workflow with their current elastomeric pump is important.