



LAKES PRECISION^{INC.}

Your Global Source for Wire Processing Perishable Tooling

SLICE MACHINE SERIES

THIS SECTION CONTAINS BLADES FOR SLICE 141 MODEL MACHINE SERIES

Your Global Source for Wire Processing Perishable Tooling

www.lakesprecision.com

SLICE 141 MODEL MACHINE SERIES

COLLINEAR ANGLE CUTTER BLADE & ANVIL CLASS: CL-A

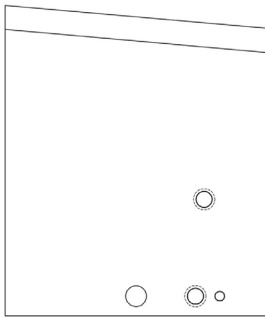


COLLINEAR ANGLE CUT-OFF BLADES

Sharp edge is ground to a flat collinear angle.

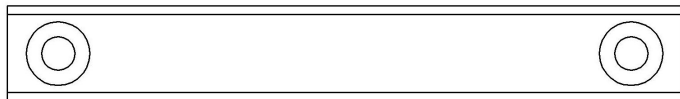
Characteristics: Sharp edges cut by shearing action. This class of blade was designed to allow multiple conductor wire to be processed without deforming the wire. The main advantage of this class is the ability to process many different wire gauges with the same blades.

- TC Coating Available -



**123487
CUTTER BLADE**

ITEM NUMBER	MATERIAL	DESCRIPTION
123487	A2 TOOL STEEL	CUTTER BLADE
123488	A2 TOOL STEEL	ANVIL



**123488
ANVIL**