



LAKES PRECISION^{INC.}

Your Global Source for Wire Processing Perishable Tooling

SCHLEUNIGER MACHINE SERIES

THIS SECTION CONTAINS BLADES FOR THE FOLLOWING MACHINE SERIES:

- CRIMPCENTER 12
- CRIMPCENTER 36
- CRIMPCENTER 36 / 60 / 64 / 70
- MP 207 & MP 257
- K750
- CCM 1200
- US-2015, US-2300, US-2500, US-2550, US-2600
- UC-3100
- PC-3500
- OC-3950
- CS-5400
- MP 8015
- JS 8300 & JS 8400
- 9000 / 9050 / 9100
- ES 9300
- PS 9500 & PS 9500RS
- PS 9550
- MEGA STRIP 9600
- MEGA STRIP 9650

Your Global Source for Wire Processing Perishable Tooling

www.lakesprecision.com

SCHLEUNIGER CRIMPCENTER 12 MACHINE SERIES

TANGENT RADIUS “V” STRIP BLADES CLASS: TA-V



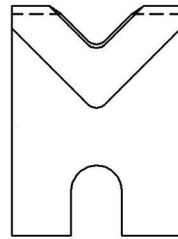
TANGENT RADIUS “V” STRIP BLADES

The sharp edge is ground to an arc whose radius approximates awg wire size. The entry angle lines meet the arc at a tangent point. This type of blade, when closed, presents a diamond shaped edge profile.

Advantages: By adjusting cutter head shut height, (if insulation material and wall thickness allow), you can process adjacent wire extrusions.

Disadvantages: Inadequate for processing thin wall and/or hard insulations such as cross-link or fiberglass jackets.

- TC Coating Available -



123032-XX

ITEM NUMBER	OEM #	DESCRIPTION
123032-1	ACA-10538095	TA-V STRIP
123032-2	ACA-10538096	TA-V STRIP
123032-3	ACA-10516696	TA-V STRIP
123032-4	ACA-10516697	TA-V STRIP
123032-5	ACA-10538097	TA-V STRIP
123032-6	ACA-10538098	TA-V STRIP

• THREE LAKES, WI (715) 546-3070 • **CONTACT LAKES PRECISION** • EL PASO, TX (915) 856-6606 •

• EMAIL: BLADES@LAKESPRECISION.COM •

SCHLEUNIGER CRIMPCENTER 36 MACHINE SERIES

TANGENT RADIUS “V” CUT-OFF BLADE CLASS: TA-V

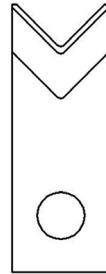


TANGENT RADIUS “V” CUT-OFF BLADE

The sharp edge is ground to a radius size. The entry angle lines meet the radius at a tangent point. This type of blade, when closed, presents a diamond shaped edge profile.

Characteristics: Sharp edges cut by slicing, creating a gradual cut. This produces less deformation of the material being cut. Cutting edges must be able to by-pass each other. This type cut-off is best used with circular shaped wire.

- TC Coating Available -



124323

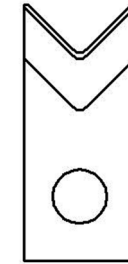
DIA MM SIZE	ITEM NUMBER	OEM #	DESCRIPTION
1.0	124323-0.50	50000.585.530	TA-V CUT-OFF

TANGENT RADIUS STRIP

The sharp edge is ground at an angle that results in a “V” opening of exactly 90 degrees.

Characteristics: 90 degree angle is widely accepted as the best entry angle to use for processing a wide range of wire sizes using the same blade setup. Most of the time, this class of blade incorporates a sharp edge ground to a very small or non-existing radius. It works sufficiently for most standard wall insulations but is marginal for thin wall, cross-linked PVC, very rubbery insulations, woven fiber or thin-walled multi-conductors.

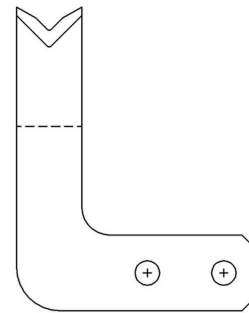
DIA MM SIZE	ITEM NUMBER	OEM #	DESCRIPTION
0.2	122800 TC	50920.010.295	0.1 RADIUS
1.0	122669 TC	50920.009.437	0.5 RADIUS
1.2	123392-2 TC	-----	0.6 RADIUS
1.5	122802 TC	-----	0.75 RADIUS
2.0	122674 TC	-----	1.0 RADIUS
2.2	123392-1 TC	-----	1.1 RADIUS
3.0	122668 TC	50920.009.438	1.5 RADIUS
4.0	122799 TC	-----	2.0 RADIUS
5.0	123372 TC	-----	2.5 RADIUS
----	122889 TC	-----	UN-V STRIP



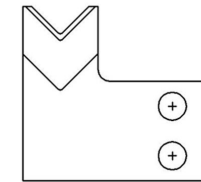
122674

CUT & REJECT BLADES

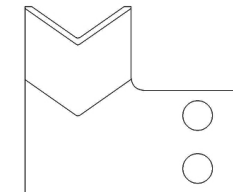
ITEM NUMBER	OEM #	DESCRIPTION
123599 TC	50000.578.248	CUT BLADE
123600 TC	50000.578.247	CUT BLADE
124944	587243	LOWER CUT



123599



123600



124944

- Uncoated Blades Available -

SCHLEUNIGER CRIMPCENTER 60 MACHINE SERIES

TANGENT RADIUS BLADE CLASS: TA-V

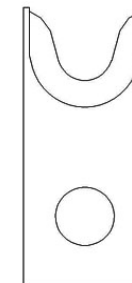
TANGENT RADIUS BLADE

The sharp edge is ground to a radius size. The entry angle lines meet the radius at a tangent point. This type of blade, when closed, presents a diamond shaped edge profile.

Characteristics: Sharp edges cut by slicing, creating a gradual cut. This produces less deformation of the material being cut. Cutting edges must be able to by-pass each other. This type cut-off is best used with circular shaped wire.

- TC Coating Available -

DIA MM SIZE	ITEM NUMBER	OEM #	DESCRIPTION
5.4	124365-1	585117	2.7 RADIUS



124365-XX

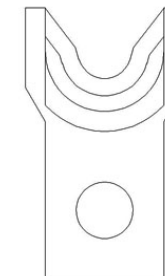
TANGENT RADIUS BLADE

The sharp edge is ground to a radius size. The entry angle lines meet the radius at a tangent point. This type of blade, when closed, presents a diamond shaped edge profile.

Characteristics: Sharp edges cut by slicing, creating a gradual cut. This produces less deformation of the material being cut. Cutting edges must be able to by-pass each other. This type cut-off is best used with circular shaped wire.

- TC Coating Available -

DIA MM SIZE	ITEM NUMBER	OEM #	DESCRIPTION
5.4	124366-1	5000.586365	2.7 RADIUS



124366-XX

SCHLEUNIGER CRIMPCENTER 64 MACHINE SERIES

COLLINEAR RADIUS STRIP BLADES CLASS: CL-R

COLLINEAR RADIUS STRIP BLADE

The sharp edge is ground to a half circle whose radius approximates awg wire size. Shearing edge is ground to a straight edge. This type of blade, when closed to shut height, forms a perfect circle profile.

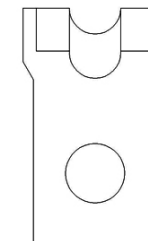
Advantages: This type of blade is excellent for precise and clean jacket removal because it exactly matches conductor gauge. Excellent for thin-wall cross-link PVC and most applications where precise jacket removal around the conductor is required, especially with layered coverings such as fiber over plastic, plastic over shields, etc.

Disadvantages: Shut height cannot be modified to process adjacent wire sizes. Off-center wire condition has to be considered when choosing blade size.

- For blades to meet your specific application, please contact Lakes Precision, Inc.

- *TC Coating Available*

DIAMM SIZE	ITEM NUMBER	OEM #	DESCRIPTION
4.0	124506-4.00	-----	CL-R BLADE
6.0	124506-6.00	587902	CL-R BLADE



124506-XX

COLLINEAR RADIUS STRIP BLADE

The sharp edge is ground to a half circle whose radius approximates awg wire size. Shearing edge is ground to a straight edge. This type of blade, when closed to shut height, forms a perfect circle profile.

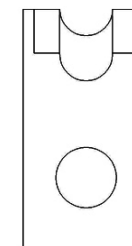
Advantages: This type of blade is excellent for precise and clean jacket removal because it exactly matches conductor gauge. Excellent for thin-wall cross-link PVC and most applications where precise jacket removal around the conductor is required, especially with layered coverings such as fiber over plastic, plastic over shields, etc.

Disadvantages: Shut height cannot be modified to process adjacent wire sizes. Off-center wire condition has to be considered when choosing blade size.

- For blades to meet your specific application, please contact Lakes Precision, Inc.

- *TC Coating Available*

DIAMM SIZE	ITEM NUMBER	OEM #	DESCRIPTION
4.00	124502-4.00	-----	CL-R BLADE
5.00	124502-5.00	587904	CL-R BLADE
5.40	124502-5.40	587903	CL-R BLADE



• THREE LAKES, WI (715) 546-3070 • **CONTACT LAKES PRECISION** • EL PASO, TX (915) 856-6606 •

• EMAIL: BLADES@LAKESPRECISION.COM •

COLLINEAR RADIUS STRIP BLADE

The sharp edge is ground to a half circle whose radius approximates awg wire size. Shearing edge is ground to a straight edge. This type of blade, when closed to shut height, forms a perfect circle profile.

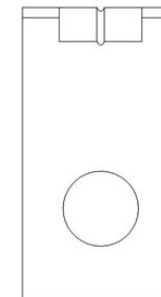
Advantages: This type of blade is excellent for precise and clean jacket removal because it exactly matches conductor gauge. Excellent for thin-wall cross-link PVC and most applications where precise jacket removal around the conductor is required, especially with layered coverings such as fiber over plastic, plastic over shields, etc.

Disadvantages: Shut height cannot be modified to process adjacent wire sizes. Off-center wire condition has to be considered when choosing blade size.

- For blades to meet your specific application, please contact Lakes Precision, Inc.

- *TC Coating Available*

DIA MM SIZE	ITEM NUMBER	DESCRIPTION
0.6	123949-1	CL-R BLADE
0.8	123949-2	CL-R BLADE
0.9	123949-3	CL-R BLADE
1.1	123949-4	CL-R BLADE



123949-XX

COLLINEAR RADIUS STRIP BLADE

The sharp edge is ground to a half circle whose radius approximates awg wire size. Shearing edge is ground to a straight edge. This type of blade, when closed to shut height, forms a perfect circle profile.

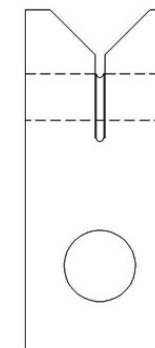
Advantages: This type of blade is excellent for precise and clean jacket removal because it exactly matches conductor gauge. Excellent for thin-wall cross-link PVC and most applications where precise jacket removal around the conductor is required, especially with layered coverings such as fiber over plastic, plastic over shields, etc.

Disadvantages: Shut height cannot be modified to process adjacent wire sizes. Off-center wire condition has to be considered when choosing blade size.

- For blades to meet your specific application, please contact Lakes Precision, Inc.

- *TC Coating Available*

DIA MM SIZE	ITEM NUMBER	DESCRIPTION
0.6-0.8	123950-1	CL-R BLADE
0.8-1.4	123950-2	CL-R BLADE
0.6-0.95	123950-3	CL-R BLADE
0.8-1.1	123950-4	CL-R BLADE
0.9-1.2	123950-5	CL-R BLADE
1.1-1.5	123950-6	CL-R BLADE



123950-XX

SCHLEUNIGER MP 207 & MP 257 MACHINE SERIES

COLLINEAR ANGLE STRIP BLADES CLASS: CL-A



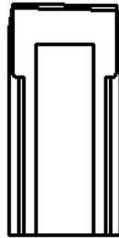
COLLINEAR ANGLE STRIP BLADES

Sharp edge is ground to a flat collinear angle.

This class of blade was designed to allow multiple conductor wire to be processed with one set of blades. This class is also used in many rotary strip models. The main advantage of this class is the ability to process many different wire gauges with the same blades, (dependent upon machine function).

There will always be a percentage of insulation tear with this class of blade. This class does not work well with thin wall insulation.

- TC Coating Available -



122447

ITEM NUMBER	OEM #	DESCRIPTION	CLASS
122447-1	-----	ROTARY STRIP	CL-A
122447-2	C4-0296T	TC COATED CARBIDE	CL-A

SCHLEUNIGER K750 MACHINE SERIES

UNIVERSAL STRIP BLADES CLASS: UN-V

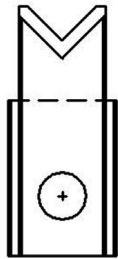


UNIVERSAL STRIP BLADES

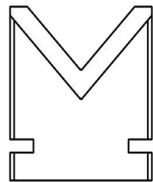
The sharp edge is ground at an angle that results in a “V” opening of exactly 90 degrees.

Characteristics: 90 degree angle is widely accepted as the best entry angle to use for processing a wide range of wire sizes using the same blade setup. Most of the time, this class of blade incorporates a sharp edge ground to a very small or non-existing radius. It works sufficiently for most of standard wall insulation but is marginal for thin wall, cross-linked PVC, very rubbery insulations, woven fiber or thin-walled multi-conductors.

- TC Coating Available -



123455



123456

ITEM NUMBER	OEM #	DESCRIPTION
123455	405103147	UN-V STRIP BLADE
123456	405103149	UN-V STRIP BLADE

5-124975 CONSISTS OF
1 PC 123455 AND 1 PC 123456

SCHLEUNIGER CCM 1200 MACHINE SERIES

COLLINEAR ANGLE CUT-OFF BLADES CLASS: CL-A



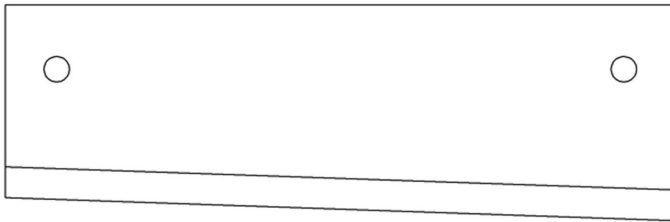
COLLINEAR ANGLE CUT-OFF BLADES

Sharp edge is ground to a flat collinear angle.

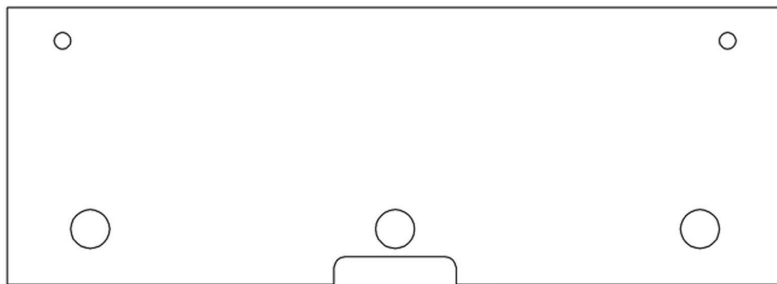
Characteristics: Sharp edges cut by shearing action. This class of blade was designed to allow multiple conductor wire to be processed without deforming the wire. The main advantage of this class is the ability to process many different wire gauges with the same blades.

- FOR MORE INFORMATION ON THESE BLADES, PLEASE CONTACT LAKES PRECISION, INC.

- *TC Coating Available* -



**122467-2
UPPER BLADE**



**122467-1
LOWER BLADE**

ITEM NUMBER	DESCRIPTION
122467-1	CL-A LOWER CUT-OFF
122467-2	CL-A UPPER CUT-OFF
5-122467	CL-A UPPER AND LOWER (SET)

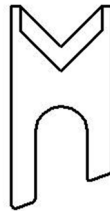
• THREE LAKES, WI (715) 546-3070 • **CONTACT LAKES PRECISION** • EL PASO, TX (915) 856-6606 •
• EMAIL: BLADES@LAKESPRECISION.COM •

UNIVERSAL STRIP BLADES

The sharp edge is ground at an angle that results in a “V” opening of exactly 90 degrees.

Characteristics: 90 degree angle is widely accepted as the best entry angle to use for processing a wide range of wire sizes using the same blade setup. Most of the time, this class of blade incorporates a sharp edge ground to a very small or non-existing radius. It works sufficiently for most of standard wall insulation but is marginal for thin wall, cross-linked PVC, very rubbery insulations, woven fiber or thin-walled multi-conductors.

- TC Coating Available -



122163

ITEM NUMBER	OEM #	DESCRIPTION
122163	CXP-2015-012C	UN-V BLADE

SCHLEUNIGER US-2015 MACHINE SERIES

TANGENT ANGLE “V” STRIP BLADES CLASS: TA-V

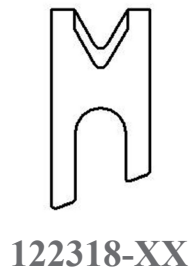
TANGENT RADIUS “V” STRIP BLADES

The sharp edge is ground to an arc whose radius approximates awg wire size. The entry angle lines meet the arc at a tangent point. This type of blade, when closed, presents a diamond shaped edge profile.

Advantages: By adjusting cutter head shut height, (if insulation material and wall thickness allow), you can process adjacent wire extrusions.

Disadvantages: Inadequate for processing thin wall and/or hard insulations such as cross-link or fiberglass jackets.

- TC Coating Available -



MM DIA SIZE	ITEM NUMBER	DESCRIPTION
0.3	122318-2	TA-V BLADE
0.4	122318-11	TA-V BLADE
0.5	122318-3	TA-V BLADE
0.8	122318-4	TA-V BLADE
1.1	122318-5	TA-V BLADE
1.2	122318-1	TA-V BLADE
1.3	122318-6	TA-V BLADE
1.5	122318-7	TA-V BLADE
1.9	122318-8	TA-V BLADE
2.4	122318-9	TA-V BLADE
2.8	122318-10	TA-V BLADE
3.2	122318-12	TA-V BLADE
3.9	122318-13	TA-V BLADE

SCHLEUNIGER US-2015 MACHINE SERIES

TRU-RADIUS “V” STRIP BLADES CLASS: TR-V



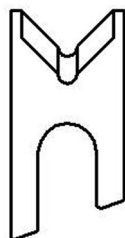
TRU-RADIUS “V” STRIP BLADES

The sharp edge is ground to a half circle whose radius approximates awg wire size. The entry angle lines intersect the half circle at the quadrant points. This type of blade, when closed, presents a true circle profile.

Advantages: This type of blade is excellent for precise and clean jacket removal because it combines the scissor-like shearing action of the by-pass blade with the exact hole profile matching a conductor gauge. Excellent for thin wall cross-link PVC and most rubbery or elastic insulations (thin or thick wall).

Disadvantages: Shut height cannot be modified to process adjacent wire sizes. Off center wire condition has to be considered when choosing blade size.

- TC Coating Available -



122788-XX

DIA SIZE	ITEM NUMBER	DESCRIPTION
.016	122788-016	TR-V BLADE
.018	122788-018	TR-V BLADE
.020	122788-020	TR-V BLADE
.024	122788-024	TR-V BLADE
.026	122788-026	TR-V BLADE
.028	122788-028	TR-V BLADE
.030	122788-030	TR-V BLADE
.032	122788-032	TR-V BLADE
.036	122788-036	TR-V BLADE
.039	122788-039	TR-V BLADE
.043	122788-043	TR-V BLADE
.047	122788-047	TR-V BLADE
.055	122788-055	TR-V BLADE

DIA SIZE	ITEM NUMBER	DESCRIPTION
.059	122788-059	TR-V BLADE
.063	122788-063	TR-V BLADE
.067	122788-067	TR-V BLADE
.078	122788-078	TR-V BLADE
.090	122788-090	TR-V BLADE
.102	122788-102	TR-V BLADE
.112	122788-112	TR-V BLADE
.125	122788-125	TR-V BLADE
.130	122788-130	TR-V BLADE
.140	122788-140	TR-V BLADE
.152	122788-152	TR-V BLADE
.160	122788-160	TR-V BLADE

• THREE LAKES, WI (715) 546-3070 • **CONTACT LAKES PRECISION** • EL PASO, TX (915) 856-6606 •

• EMAIL: BLADES@LAKESPRECISION.COM •

SCHLEUNIGER US-2015 MACHINE SERIES

2 CONDUCTOR TANGENT RADIUS “V” STRIP BLADES CLASS: TA-V



TANGENT RADIUS “V” STRIP BLADES

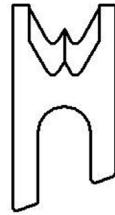
The sharp edge is ground to an arc whose radius approximates awg wire size. The entry angle lines meet the arc at a tangent point. This type of blade, when closed, presents a diamond shaped edge profile.

Advantages: By adjusting cutter head shut height, (if insulation material and wall thickness allow), you can process adjacent wire extrusions.

Disadvantages: Inadequate for processing thin wall and/or hard insulations such as cross-link or fiberglass jackets.

- For blades to meet your specific application, please contact Lakes Precision, Inc.

- *TC Coating Available / Wire Samples Required* -



123318-X

DIA MM SIZE	ITEM NUMBER	DESCRIPTION
0.9	123318-1	2 CONDUCTOR TA-V
1.1	123318-2	2 CONDUCTOR TA-V

SCHLEUNIGER US-2300 MACHINE SERIES

UNIVERSAL STRIP BLADES CLASS: UN-V

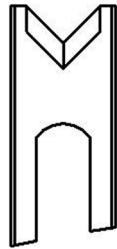


UNIVERSAL STRIP BLADES

The sharp edge is ground at an angle that results in a “V” opening of exactly 90 degrees.

Characteristics: 90 degree angle is widely accepted as the best entry angle to use for processing a wide range of wire sizes using the same blade setup. Most of the time, this class of blade incorporates a sharp edge ground to a very small or non-existing radius. It works sufficiently for most of standard wall insulation but is marginal for thin wall, cross-linked PVC, very rubbery insulations, woven fiber or thin-walled multi-conductors.

- TC Coating Available -



124409

ITEM NUMBER	OEM #	DESCRIPTION
124409	STM-410993	UN-V STRIP BLADE

SCHLEUNIGER US-2300 MACHINE SERIES

TRU-RADIUS “V” STRIP BLADES



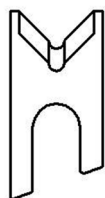
TRU-RADIUS “V” STRIP BLADES

The sharp edge is ground to a half circle whose radius approximates awg wire size. The entry angle lines intersect the half circle at the quadrant points. This type of blade, when closed, presents a true circle profile.

Advantages: This type of blade is excellent for precise and clean jacket removal because it combines the scissor-like shearing action of the by-pass blade with the exact hole profile matching a conductor gauge. Excellent for thin wall cross-link PVC and most rubbery or elastic insulations (thin or thick wall).

Disadvantages: Shut height cannot be modified to process adjacent wire sizes. Off center wire condition has to be considered when choosing blade size.

- TC Coating Available -



124731-XX

DIA MM SIZE	ITEM NUMBER	DESCRIPTION
0.40	124731-016	TR-V BLADE
0.45	124731-018	TR-V BLADE
0.50	124731-020	TR-V BLADE
0.60	124731-024	TR-V BLADE
0.70	124731-028	TR-V BLADE
0.80	124731-032	TR-V BLADE
0.90	124731-036	TR-V BLADE
1.0	124731-039	TR-V BLADE
1.10	124731-043	TR-V BLADE
1.20	124731-047	TR-V BLADE
1.40	124731-055	TR-V BLADE

DIA MM SIZE	ITEM NUMBER	DESCRIPTION
1.50	124731-059	TR-V BLADE
1.60	124731-063	TR-V BLADE
1.70	124731-067	TR-V BLADE
2.0	124731-078	TR-V BLADE
2.30	124731-090	TR-V BLADE
2.60	124731-102	TR-V BLADE
2.80	124731-112	TR-V BLADE
2.99	124731-118	TR-V BLADE
3.80	124731-125	TR-V BLADE
3.55	124731-140	TRV-BLADE
3.90	124731-152	TR-V BLADE
4.00	124731-160	TR-V BLADE

• THREE LAKES, WI (715) 546-3070 • **CONTACT LAKES PRECISION** • EL PASO, TX (915) 856-6606 •

• EMAIL: BLADES@LAKESPRECISION.COM •

SCHLEUNIGER US-2500 MACHINE SERIES

TRU-RADIUS “V” STRIP BLADES CLASS: TR-V

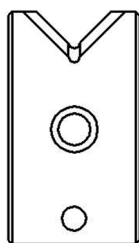
TRU-RADIUS “V” STRIP BLADE

The sharp edge is ground to a half circle whose radius approximates awg wire size. The entry angle lines intersect the half circle at the quadrant points. This type of blade, when closed, presents a true circle profile.

Advantages: This type of blade is excellent for precise and clean jacket removal because it combines the scissor-like shearing action of the by-pass blade with the exact hole profile matching a conductor gauge. Excellent for thin wall cross-link PVC and most rubbery or elastic insulations (thin or thick wall).

Disadvantages: Shut height cannot be modified to process adjacent wire sizes. Off center wire condition has to be considered when choosing blade size.

- TC Coating Available -



122568-XX

DIA MM SIZE	ITEM NUMBER	DESCRIPTION
0.4	122568-27	TR-V BLADE
0.5	122568-28	TR-V BLADE
0.6	122568-29	TR-V BLADE
0.7	122568-1	TR-V BLADE
0.8	122568-2	TR-V BLADE
0.9	122568-3	TR-V BLADE
1.0	122568-4	TR-V BLADE
1.1	122568-5	TR-V BLADE
1.2	122568-10	TR-V BLADE
1.3	122568-11	TR-V BLADE
1.4	122568-12	TR-V BLADE
1.5	122568-6	TR-V BLADE
1.6	122568-13	TR-V BLADE
1.7	122568-14	TR-V BLADE
1.8	122568-15	TR-V BLADE

DIA MM SIZE	ITEM NUMBER	DESCRIPTION
1.9	122568-8	TR-V BLADE
2.0	122568-16	TR-V BLADE
2.1	122568-17	TR-V BLADE
2.2	122568-18	TR-V BLADE
2.3	122568-19	TR-V BLADE
2.4	122568-20	TR-V BLADE
2.5	122568-21	TR-V BLADE
2.6	122568-22	TR-V BLADE
2.7	122568-23	TR-V BLADE
2.8	122568-24	TR-V BLADE
2.85	122568-9	TR-V BLADE
2.9	122568-25	TR-V BLADE
3.5	122568-26	TR-V BLADE
4.0	122568-7	TR-V BLADE

• THREE LAKES, WI (715) 546-3070 • **CONTACT LAKES PRECISION** • EL PASO, TX (915) 856-6606 •

• EMAIL: BLADES@LAKESPRECISION.COM •

SCHLEUNIGER US-2500 MACHINE SERIES

UNIVERSAL STRIP BLADES CLASS: UN-V

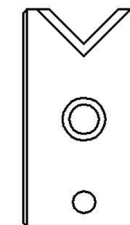
UNIVERSAL STRIP BLADES

The sharp edge is ground at an angle that results in a “V” opening of exactly 90 degrees.

Characteristics: 90 degree angle is widely accepted as the best entry angle to use for processing a wide range of wire sizes using the same blade setup. Most of the time, this class of blade incorporates a sharp edge ground to a very small or non-existing radius. It works sufficiently for most of standard wall insulation but is marginal for thin wall, cross-linked PVC, very rubbery insulations, woven fiber or thin-walled multi-conductors.

- TC Coating Available -

ITEM NUMBER	OEM #	DESCRIPTION
122461	USP-1300	UN-V STRIP BLADE



122461

SCHLEUNIGER US-2500 MACHINE SERIES

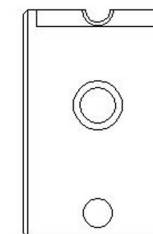
DRILLED RADIUS DIE TYPE BLADE WITH WIRE GUIDES

5-122797-X CONSISTS OF:

1 PAIR 122795-X STRIP BLADE

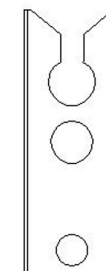
1 PC. 122796-X GUIDE

STRIP BLADE	DIA MM SIZE
122795-1	1.10 / 1.45
122795-2	1.30 / 1.75
122795-3	1.50 / 1.95
122795-4	2.20 / 2.70



122795-X

GUIDE	WIDTH MM
122796-1.45	1.45
122796-1.75	1.75
122796-1.95	1.95
122796-2.70	2.70



122796-X

SCHLEUNIGER US-2550 MACHINE SERIES

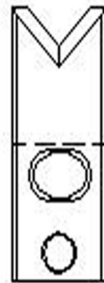
UNIVERSAL CUT / STRIP BLADES CLASS: UN-V

UNIVERSAL STRIP BLADES

The sharp edge is ground at an angle that results in a “V” opening of exactly 90 degrees.

Characteristics: 90 degree angle is widely accepted as the best entry angle to use for processing a wide range of wire sizes using the same blade setup. Most of the time, this class of blade incorporates a sharp edge ground to a very small or non-existing radius. It works sufficiently for most of standard wall insulation but is marginal for thin wall, cross-linked PVC, very rubbery insulations, woven fiber or thin-walled multi-conductors.

- TC Coating Available -



124641

ITEM NUMBER	OEM #	DESCRIPTION
124641	421540	UN-V CUT/STRIP BLADE

SCHLEUNIGER US-2600 MACHINE SERIES

UNIVERSAL STRIP BLADES CLASS: UN-V

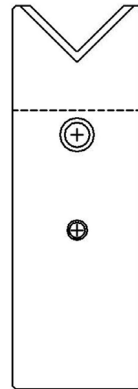


UNIVERSAL STRIP BLADES

The sharp edge is ground at an angle that results in a “V” opening of exactly 90 degrees.

Characteristics: 90 degree angle is widely accepted as the best entry angle to use for processing a wide range of wire sizes using the same blade setup. Most of the time, this class of blade incorporates a sharp edge ground to a very small or non-existing radius. It works sufficiently for most of standard wall insulation but is marginal for thin wall, cross-linked PVC, very rubbery insulations, woven fiber or thin-walled multi-conductors.

- TC Coating Available -



123485

ITEM NUMBER	OEM #	DESCRIPTION
123485	STH-402586	UN-V BLADE

SCHLEUNIGER US-2600 MACHINE SERIES

TRU-RADIUS “V” STRIP BLADES CLASS: TR-V



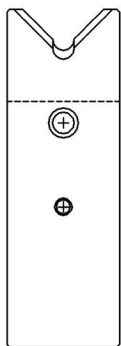
TRU-RADIUS “V” STRIP BLADE

The sharp edge is ground to a half circle whose radius approximates awg wire size. The entry angle lines intersect the half circle at the quadrant points. This type of blade, when closed, presents a true circle profile.

Advantages: This type of blade is excellent for precise and clean jacket removal because it combines the scissor-like shearing action of the by-pass blade with the exact hole profile matching a conductor gauge. Excellent for thin wall cross-link PVC and most rubbery or elastic insulations (thin or thick wall).

Disadvantages: Shut height cannot be modified to process adjacent wire sizes. Off center wire condition has to be considered when choosing blade size.

- TC Coating Available -



123486-XX

DIA MM SIZE	OEM #	ITEM NUMBER	DIA MM SIZE	OEM #	ITEM NUMBER	DIA MM SIZE	OEM #	ITEM NUMBER	DIA MM SIZE	OEM #	ITEM NUMBER
0.5	-----	123486-65	2.4	-----	123486-15	4.0	-----	123486-31	5.7	-----	123486-48
0.8	-----	123486-64	2.5	402575	123486-16	4.1	-----	123486-32	5.8	-----	123486-49
1.0	402571	123486-1	2.6	-----	123486-17	4.2	-----	123486-33	5.9	-----	123486-50
1.1	-----	123486-2	2.7	-----	123486-18	4.3	-----	123486-34	6.0	402582	123486-51
1.2	-----	123486-3	2.8	-----	123486-19	4.4	-----	123486-35	6.1	-----	123486-52
1.3	-----	123486-4	2.9	-----	123486-20	4.5	402579	123486-36	6.2	-----	123486-53
1.4	-----	123486-5	3.0	402576	123486-21	4.6	-----	123486-37	6.3	-----	123486-54
1.5	402573	123486-6	3.1	-----	123486-22	4.7	-----	123486-38	6.4	-----	123486-55
1.6	-----	123486-7	3.2	-----	123486-23	4.8	-----	123486-39	6.5	402583	123486-56
1.7	-----	123486-8	3.3	-----	123486-24	4.9	-----	123486-40	6.6	-----	123486-57
1.8	-----	123486-9	3.4	-----	123486-25	5.0	402580	123486-41	6.7	-----	123486-58
1.9	-----	123486-10	3.5	402577	123486-26	5.1	-----	123486-42	6.8	-----	123486-59
2.0	402574	123486-11	3.6	-----	123486-27	5.2	-----	123486-43	6.9	-----	123486-60
2.1	-----	123486-12	3.7	-----	123486-28	5.3	-----	123486-44	7.0	402584	123486-62
2.2	-----	123486-13	3.8	-----	123486-29	5.4	-----	123486-45	7.1	-----	13486-63
2.3	-----	123486-14	3.9	-----	123486-30	5.5	402581	123486-46	7.2	-----	123486-61
						5.6	-----	123486-47	7.5	402585	123486-66

• THREE LAKES, WI (715) 546-3070 • CONTACT LAKES PRECISION • EL PASO, TX (915) 856-6606 •

• EMAIL: BLADES@LAKESPRECISION.COM •

SCHLEUNIGER US-2600 MACHINE SERIES

COLLINEAR ANGLE STRIP BLADES CLASS: CL-A

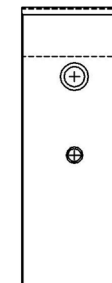
COLLINEAR ANGLE STRIP BLADE

Sharp edge is ground to a flat collinear angle.

This class of blade was designed to allow multiple conductor wire to be processed with one set of blades. This class is also used in many rotary strip models. The main advantage of this class is the ability to process many different wire gauges with the same blades, (dependent upon machine function). There will always be a percentage of insulation tear with this class of blade. This class does not work well with thin wall insulation.

- TC Coating Available -

ITEM NUMBER	OEM #	DESCRIPTION
123797	402.663	CL-A STRIP



123797

SCHLEUNIGER US-2600 MACHINE SERIES

TRU-RADIUS 2V STRIP BLADE CLASS: TR-V

TRU-RADIUS 2V STRIP BLADE - 30 DEGREE

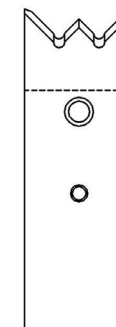
The sharp edge is ground to a half circle whose radius approximates awg wire size. The entry angle lines intersect the half circle at the quadrant points. This type of blade, when closed, presents a true circle profile.

Advantages: This type of blade is excellent for precise and clean jacket removal because it combines the scissor-like shearing action of the by-pass blade with the exact hole profile matching a conductor gauge. Excellent for thin wall cross-link PVC and most rubbery or elastic insulations (thin or thick wall).

Disadvantages: Shut height cannot be modified to process adjacent wire sizes. Off center wire condition has to be considered when choosing blade size.

- TC Coating Available -

ITEM NUMBER	DESCRIPTION	CLASS
124187-7	2V 0.45 2L 2.40 STRIP BLADE	TR-V
124187-8	2V 0.60 2L 2.40 STRIP BLADE	TR-V
124187-4	2V 0.60 2L 3.15 STRIP BLADE	TR-V
124187-5	2V 0.50 2L 3.15 STRIP BLADE	TR-V
124187-9	2V 0.75 2L 2.40 STRIP BLADE	TR-V
124187-6	2V 0.90 2L 3.15 STRIP BLADE	TR-V
124187-1	2V 1.20 2L 4.50 STRIP BLADE	TR-V
124187-2	2V 1.30 2L 4.50 STRIP BLADE	TR-V
124187-3	2V 1.60 2L 5.85 STRIP BLADE	TR-V



124187-XX

• THREE LAKES, WI (715) 546-3070 • CONTACT LAKES PRECISION • EL PASO, TX (915) 856-6606 •

• EMAIL: BLADES@LAKESPRECISION.COM •

SCHLEUNIGER UC-3100 MACHINE SERIES

COLLINEAR ANGLE CUT-OFF BLADES CLASS: CL-R

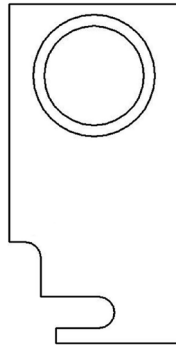


COLLINEAR ANGLE CUT-OFF BLADES

Sharp edge is ground to a flat collinear angle.

Characteristics: Sharp edges cut by shearing action. This class of blade was designed to allow multiple conductor wire to be processed without deforming the wire. The main advantage of this class is the ability to process many different wire gauges with the same blades.

- TC Coating Available -



123249

ITEM NUMBER	DESCRIPTION
123249	CL-A CUT-OFF BLADE

SCHLEUNIGER PC-3500 MACHINE SERIES

COLLINEAR ANGLE CUT-OFF BLADES CLASS: CL-A

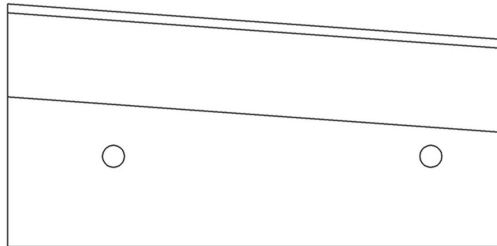


COLLINEAR ANGLE CUT-OFF BLADES

Sharp edge is ground to a flat collinear angle.

Characteristics: Sharp edges cut by shearing action. This class of blade was designed to allow multiple conductor wire to be processed without deforming the wire. The main advantage of this class is the ability to process many different wire gauges with the same blades.

- TC Coating Available -



123158

ITEM NUMBER	DESCRIPTION
123158	UPPER CL-A CUT-OFF

SCHLEUNIGER OC-3950 MACHINE SERIES

COLLINEAR ANGLE CUT-OFF BLADES CLASS: CL-A

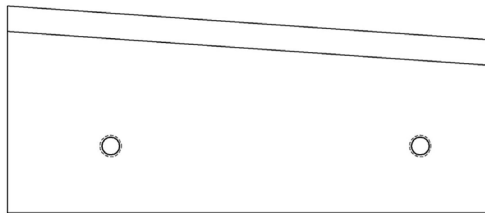


COLLINEAR ANGLE CUT-OFF BLADES

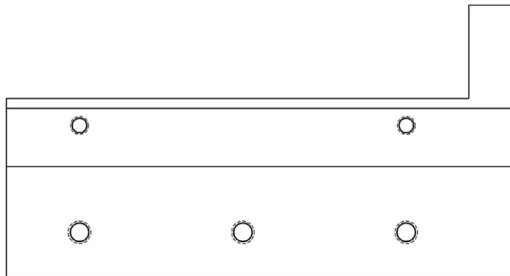
Sharp edge is ground to a flat collinear angle.

Characteristics: Sharp edges cut by shearing action. This class of blade was designed to allow multiple conductor wire to be processed without deforming the wire. The main advantage of this class is the ability to process many different wire gauges with the same blades.

- TC Coating Available -



123552
BLADE



123553
ANVIL

ITEM NUMBER	OEM #	DESCRIPTION
123552	302.5006	CL-A CUT-OFF
123553	402.5000	CL-A CUT-OFF
5-123550	OCP-900	SET

(CUT BLADE SET) 5-123550= 1PC 123552 & 1PC 123553

• THREE LAKES, WI (715) 546-3070 • **CONTACT LAKES PRECISION** • EL PASO, TX (915) 856-6606 •
• EMAIL: BLADES@LAKESPRECISION.COM •

SCHLEUNIGER CS-5400 MACHINE SERIES

COLLINEAR ANGLE STRIP BLADES CLASS: CL-A



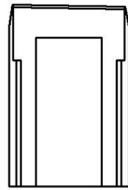
COLLINEAR ANGLE STRIP BLADES

Sharp edge is ground to a flat collinear angle.

This class of blade was designed to allow multiple conductor wire to be processed with one set of blades. This class is also used in many rotary strip models. The main advantage of this class is the ability to process many different wire gauges with the same blades, (dependent upon machine function).

There will always be a percentage of insulation tear with this class of blade. This class does not work well with thin wall insulation.

- *TC Coating Available* -



123446

ITEM NUMBER	OEM #	DESCRIPTION	CLASS
123446	C4-1830	ROTARY STRIP	CL-A

SCHLEUNIGER MP 8015 MACHINE SERIES

COLLINEAR ANGLE STRIP BLADES CLASS: CL-A



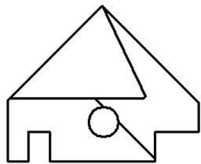
COLLINEAR ANGLE STRIP BLADES

Sharp edge is ground to a flat collinear angle.

This class of blade was designed to allow multiple conductor wire to be processed with one set of blades. This class is also used in many rotary strip models. The main advantage of this class is the ability to process many different wire gauges with the same blades, (dependent upon machine function).

There will always be a percentage of insulation tear with this class of blade. This class does not work well with thin wall insulation.

- TC Coating Available -



122391-XX

ITEM NUMBER	MATERIAL	OEM #	DESCRIPTION
122391-1	TC COATED CARBIDE	CXP-8015-014C	CL-A ROTARY STRIP
122391-2	TC COATED A2 TOOL STEEL	-----	CL-A ROTARY STRIP
122391-3	TC COATED M2 TOOL STEEL	-----	CL-A ROTARY STRIP

SCHLEUNIGER JS 8300 MACHINE SERIES

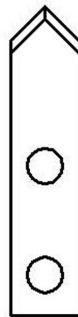
ANGLE CUT-OFF BLADES CLASS: CL-A



- FOR MORE INFORMATION, CONTACT LAKES PRECISION, INC.

- *TC Coating Available* -

ITEM NUMBER	OEM #	DESCRIPTION	CLASS
122569	301.5026	RADIAL CUT-OFF	CL-A
122570	301.5027	AXIAL CUT-OFF	CL-A



122569

RADIAL / AXIAL
CUT-OFF BLADES



122570

SCHLEUNIGER JS 8400 MACHINE SERIES

COLLINEAR ANGLE STRIP BLADES CLASS: CL-A



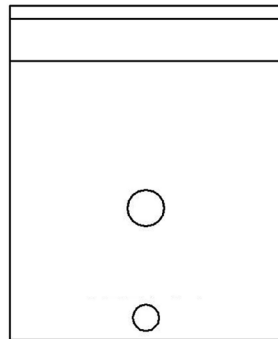
COLLINEAR ANGLE STRIP BLADES

Sharp edge is ground to a flat collinear angle.

This class of blade was designed to allow multiple conductor wire to be processed with one set of blades. This class is also used in many rotary strip models. The main advantage of this class is the ability to process many different wire gauges with the same blades, (dependent upon machine function).

There will always be a percentage of insulation tear with this class of blade. This class does not work well with thin wall insulation.

- TC Coating Available -



122704

ITEM NUMBER	OEM #	DESCRIPTION	CLASS
122704	301.6082	ROTARY STRIP	CL-A

SCHLEUNIGER CS 9000 MACHINE SERIES

UNIVERSAL STRIP BLADES CLASS: UN-V

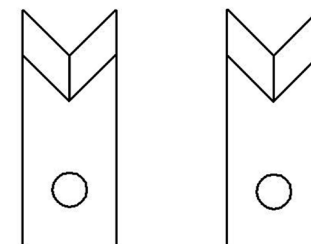
UNIVERSAL STRIP BLADES

The sharp edge is ground at an angle that results in a “V” opening of exactly 90 degrees.

Characteristics: 90 degree angle is widely accepted as the best entry angle to use for processing a wide range of wire sizes using the same blade setup. Most of the time, this class of blade incorporates a sharp edge ground to a very small or non-existing radius. It works sufficiently for most of standard wall insulation but is marginal for thin wall, cross-linked PVC, very rubbery insulations, woven fiber or thin-walled multi-conductors.

- TC Coating Available -

ITEM NUMBER	MATERIAL	CLASS
5-122469-1	A2 TOOL STEEL	UN-V
5-122469-2	M2 TOOL STEEL	UN-V
5-122469-3	TUNGSTEN CARBIDE	UN-V



LONG SHORT

5-124469-XX
CONSISTS OF LONG &
SHORT BLADE

UNIVERSAL STRIP BLADES

The sharp edge is ground at an angle that results in a “V” opening of exactly 90 degrees.

Characteristics: 90 degree angle is widely accepted as the best entry angle to use for processing a wide range of wire sizes using the same blade setup. Most of the time, this class of blade incorporates a sharp edge ground to a very small or non-existing radius. It works sufficiently for most of standard wall insulation but is marginal for thin wall, cross-linked PVC, very rubbery insulations, woven fiber or thin-walled multi-conductors.

- TC Coating Available -

ITEM NUMBER	DESCRIPTION	OEM #	CLASS
122326	CARBIDE UN-V STRIP	CS1-126C/401.1001	UN-V



122326

SCHLEUNIGER 9050 / 9100 MACHINE SERIES

UNIVERSAL STRIP BLADES CLASS: UN-V

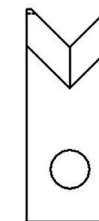
UNIVERSAL STRIP BLADES

The sharp edge is ground at an angle that results in a “V” opening of exactly 90 degrees.

Characteristics: 90 degree angle is widely accepted as the best entry angle to use for processing a wide range of wire sizes using the same blade setup. Most of the time, this class of blade incorporates a sharp edge ground to a very small or non-existing radius. It works sufficiently for most of standard wall insulation but is marginal for thin wall, cross-linked PVC, very rubbery insulations, woven fiber or thin-walled multi-conductors.

- TC Coating Available -

ITEM NUMBER	DESCRIPTION	CLASS
123161-1	A2 STEEL UN-V STRIP	UN-V
123161-2	A2 STEEL UN-V STRIP	UN-V
5-123161	SET	UN-V



123161-1



123161-2

5-123161 SET

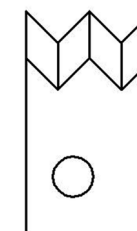
UNIVERSAL STRIP BLADES

The sharp edge is ground at an angle that results in a “V” opening of exactly 90 degrees.

Characteristics: 90 degree angle is widely accepted as the best entry angle to use for processing a wide range of wire sizes using the same blade setup. Most of the time, this class of blade incorporates a sharp edge ground to a very small or non-existing radius. It works sufficiently for most of standard wall insulation but is marginal for thin wall, cross-linked PVC, very rubbery insulations, woven fiber or thin-walled multi-conductors.

- TC Coating Available -

ITEM NUMBER	DESCRIPTION	CLASS
5-122301	2V UNIVERSAL CUT / STRIP	UN-V



5-122301

SCHLEUNIGER CS 9050 MACHINE SERIES

TRU-RADIUS “V” CUT / STRIP BLADES CLASS: TR-V



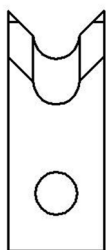
TRU-RADIUS “V” CUT / STRIP BLADE

The sharp edge is ground to a half circle whose radius approximates awg wire size. The entry angle lines intersect the half circle at the quadrant points. This type of blade, when closed, presents a true circle profile.

Advantages: This type of blade is excellent for precise and clean jacket removal because it combines the scissor-like shearing action of the by-pass blade with the exact hole profile matching a conductor gauge. Excellent for thin wall cross-link PVC and most rubbery or elastic insulations (thin or thick wall).

Disadvantages: Shut height cannot be modified to process adjacent wire sizes. Off center wire condition has to be considered when choosing blade size.

- TC Coating Available -



5-122563-XX

DIA MM SIZE	ITEM NUMBER
0.4	5-122563-47
0.5	5-122563-48
0.6	5-122563-49
0.7	5-122563-1
0.8	5-122563-2
0.9	5-122563-3
1.0	5-122563-4
1.1	5-122563-5
1.2	5-122563-6
1.3	5-122563-7
1.4	5-122563-8
1.5	5-122563-9
1.6	5-122563-10
1.7	5-122563-11
1.8	5-122563-12
1.9	5-122563-13

DIA MM SIZE	ITEM NUMBER
2.0	5-122563-14
2.1	5-122563-15
2.2	5-122563-16
2.3	5-122563-17
2.4	5-122563-18
2.5	5-122563-19
2.6	5-122563-20
2.7	5-122563-21
2.8	5-122563-22
2.9	5-122563-23
3.0	5-122563-24
3.1	5-122563-25
3.2	5-122563-26
3.3	5-122563-27
3.4	5-122563-28
3.5	5-122563-29

DIA MM SIZE	ITEM NUMBER
3.6	5-122563-30
3.7	5-122563-31
3.8	5-122563-32
3.9	5-122563-33
4.0	5-122563-34
4.1	5-122563-35
4.2	5-122563-36
4.3	5-122563-37
4.4	5-122563-38
4.5	5-122563-39
4.6	5-122563-40
4.7	5-122563-41
4.8	5-122563-43
5.0	5-122563-46
5.2	5-122563-42
5.6	5-122563-45
6.0	5-122563-44

• THREE LAKES, WI (715) 546-3070 • CONTACT LAKES PRECISION • EL PASO, TX (915) 856-6606 •

• EMAIL: BLADES@LAKESPRECISION.COM •

COLLINEAR RADIUS CUT / STRIP BLADE

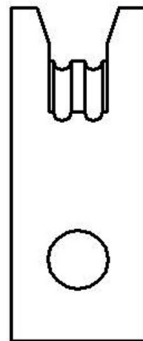
The sharp edge is ground to a half circle whose radius approximates awg wire size. Shearing edge is ground to a straight edge. This type of blade, when closed to shut height, forms a perfect circle profile.

Advantages: This type of blade is excellent for precise and clean jacket removal because it exactly matches conductor gauge. Excellent for thin-wall cross-link PVC and most applications where precise jacket removal around the conductor is required, especially with layered coverings such as fiber over plastic, plastic over shields, etc.

Disadvantages: Shut height cannot be modified to process adjacent wire sizes. Off-center wire condition has to be considered when choosing blade size.

- For blades to meet your specific application, please contact Lakes Precision, Inc.

- *TC Coating Available / Wire Samples Required* -



5-122565

ITEM NUMBER	DESCRIPTION	CLASS
5-122565	2 CONDUCTOR CUT / STRIP	CL-R

SCHLEUNIGER ES 9300 MACHINE SERIES

TRU-RADIUS “V” CUT / STRIP BLADES CLASS: TR-V

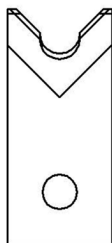
TRU-RADIUS “V” CUT / STRIP BLADE

The sharp edge is ground to a half circle whose radius approximates awg wire size. The entry angle lines intersect the half circle at the quadrant points. This type of blade, when closed, presents a true circle profile.

Advantages: This type of blade is excellent for precise and clean jacket removal because it combines the scissor-like shearing action of the by-pass blade with the exact hole profile matching a conductor gauge. Excellent for thin wall cross-link PVC and most rubbery or elastic insulations (thin or thick wall).

Disadvantages: Shut height cannot be modified to process adjacent wire sizes. Off center wire condition has to be considered when choosing blade size.

- TC Coating Available -



5-122573-XX

DIA MM SIZE	ITEM NUMBER
0.4	5-122573-42
0.5	5-122573-43
0.6	5-122573-44
0.7	5-122573-1
0.8	5-122573-2
0.9	5-122573-3
1.0	5-122573-4
1.1	5-122573-5
1.2	5-122573-6
1.3	5-122573-7
1.4	5-122573-8
1.5	5-122573-9
1.6	5-122573-10
1.7	5-122573-11
1.8	5-122573-12

DIA MM SIZE	ITEM NUMBER
1.9	5-122573-13
2.0	5-122573-14
2.1	5-122573-15
2.2	5-122573-16
2.3	5-122573-17
2.4	5-122573-18
2.5	5-122573-19
2.6	5-122573-20
2.7	5-122573-21
2.8	5-122573-22
2.9	5-122573-23
3.0	5-122573-24
3.1	5-122573-25
3.2	5-122573-26
3.3	5-122573-27

DIA MM SIZE	ITEM NUMBER
3.4	5-122573-28
3.5	5-122573-29
3.6	5-122573-30
3.7	5-122573-31
3.8	5-122573-32
3.9	5-122573-33
4.0	5-122573-34
4.1	5-122573-35
4.2	5-122573-36
4.3	5-122573-37
4.4	5-122573-38
4.5	5-122573-39
4.6	5-122573-40
4.7	5-122573-41

• THREE LAKES, WI (715) 546-3070 • CONTACT LAKES PRECISION • EL PASO, TX (915) 856-6606 •

• EMAIL: BLADES@LAKESPRECISION.COM •

SCHLEUNIGER ES 9300 MACHINE SERIES

UNIVERSAL CUT / STRIP BLADES CLASS: UN-V

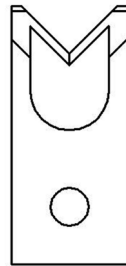


UNIVERSAL CUT / STRIP BLADES

The sharp edge is ground at an angle that results in a “V” opening of exactly 90 degrees.

Characteristics: 90 degree angle is widely accepted as the best entry angle to use for processing a wide range of wire sizes using the same blade setup. Most of the time, this class of blade incorporates a sharp edge ground to a very small or non-existing radius. It works sufficiently for most of standard wall insulation but is marginal for thin wall, cross-linked PVC, very rubbery insulations, woven fiber or thin-walled multi-conductors.

- TC Coating Available -



5-122945

ITEM NUMBER	DESCRIPTION	CLASS
5-122945	UNIVERSAL CUT/ STRIP	UN-V

SCHLEUNIGER ES 9300 MACHINE SERIES

TANGENT ANGLE “V” STRIP BLADES CLASS: TA-V



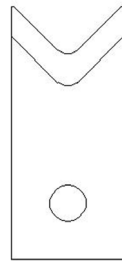
TANGENT RADIUS “V” STRIP BLADES

The sharp edge is ground to an arc whose radius approximates awg wire size. The entry angle lines meet the arc at a tangent point. This type of blade, when closed, presents a diamond shaped edge profile.

Advantages: By adjusting cutter head shut height, (if insulation material and wall thickness allow), you can process adjacent wire extrusions.

Disadvantages: Inadequate for processing thin wall and/or hard insulations such as cross-link or fiberglass jackets.

- TC Coating Available -



5-124248

5-124248-X CONSISTS OF (2) 124248-X, (2) 122562-2 & (1) 122327-2

ITEM NUMBER	RADIUS MM SIZE	CLASS
5-124248-0.4	0.2	TA-V
5-124248-0.9	0.45	TA-V
5-124248-1.0	0.5	TA-V
5-124248-1.3	0.65	TA-V
5-124248-1.5	0.75	TA-V
5-124248-1.6	0.8	TA-V
5-124248-2.0	1.0	TA-V
5-124248-2.6	1.3	TA-V
5-124248-3.0	1.5	TA-V
5-124248-4.0	2.0	TA-V
5-124248-6.0	3.0	TA-V

SCHLEUNIGER ES 9300 MACHINE SERIES

TRU-RADIUS “V” CUT / STRIP BLADES CLASS: TR-V



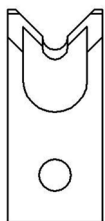
TRU-RADIUS “V” CUT / STRIP BLADE

The sharp edge is ground to a half circle whose radius approximates awg wire size. The entry angle lines intersect the half circle at the quadrant points. This type of blade, when closed, presents a true circle profile.

Advantages: This type of blade is excellent for precise and clean jacket removal because it combines the scissor-like shearing action of the by-pass blade with the exact hole profile matching a conductor gauge. Excellent for thin wall cross-link PVC and most rubbery or elastic insulations (thin or thick wall).

Disadvantages: Shut height cannot be modified to process adjacent wire sizes. Off center wire condition has to be considered when choosing blade size.

- TC Coating Available -



5-122944

DIA MM SIZE	ITEM NUMBER	DIA MM SIZE	ITEM NUMBER	DIA MM SIZE	ITEM NUMBER	DIA MM SIZE	ITEM NUMBER
0.4	5-122944-84	2.5	5-122944-16	4.7	5-122944-38	6.9	5-122944-60
0.5	5-122944-82	2.6	5-122944-17	4.8	5-122944-39	7.0	5-122944-61
0.6	5-122944-86	2.7	5-122944-18	4.9	5-122944-40	7.1	5-122944-62
0.7	5-122944-87	2.8	5-122944-19	5.0	5-122944-41	7.2	5-122944-63
0.75	5-122944-83	2.9	5-122944-20	5.1	5-122944-42	7.3	5-122944-64
0.80	5-122944-88	3.0	5-122944-21	5.2	5-122944-43	7.4	5-122944-65
0.9	5-122944-85	3.1	5-122944-22	5.3	5-122944-44	7.5	5-122944-66
1.0	5-122944-1	3.2	5-122944-23	5.4	5-122944-45	7.6	5-122944-67
1.1	5-122944-2	3.3	5-122944-24	5.5	5-122944-46	7.7	5-122944-68
1.2	5-122944-3	3.4	5-122944-25	5.6	5-122944-47	7.8	5-122944-69
1.3	5-122944-4	3.5	5-122944-26	5.7	5-122944-48	7.9	5-122944-70
1.4	5-122944-5	3.6	5-122944-27	5.8	5-122944-49	8.0	5-122944-71
1.5	5-122944-6	3.7	5-122944-28	5.9	5-122944-50	8.1	5-122944-72
1.6	5-122944-7	3.8	5-122944-29	6.0	5-122944-51	8.2	5-122944-73
1.7	5-122944-8	3.9	5-122944-30	6.1	5-122944-52	8.3	5-122944-74
1.8	5-122944-9	4.0	5-122944-31	6.2	5-122944-53	8.4	5-122944-75
1.9	5-122944-10	4.1	5-122944-32	6.3	5-122944-54	8.5	5-122944-76
2.0	5-122944-11	4.2	5-122944-33	6.4	5-122944-55	8.6	5-122944-77
2.1	5-122944-12	4.3	5-122944-34	6.5	5-122944-56	8.7	5-122944-78
2.2	5-122944-13	4.4	5-122944-35	6.6	5-122944-57	8.8	5-122944-79
2.3	5-122944-14	4.5	5-122944-36	6.7	5-122944-58	8.9	5-122944-80
2.4	5-122944-15	4.6	5-122944-37	6.8	5-122944-59	9.0	5-122944-81

• THREE LAKES, WI (715) 546-3070 • CONTACT LAKES PRECISION • EL PASO, TX (915) 856-6606 •

• EMAIL: BLADES@LAKESPRECISION.COM •

SCHLEUNIGER ES 9300 MACHINE SERIES

2V UNIVERSAL CUT / STRIP BLADES CLASS: UN-V

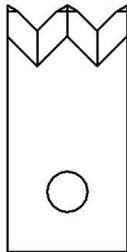


UNIVERSAL CUT / STRIP BLADES

The sharp edge is ground at an angle that results in a “V” opening of exactly 90 degrees.

Characteristics: 90 degree angle is widely accepted as the best entry angle to use for processing a wide range of wire sizes using the same blade setup. Most of the time, this class of blade incorporates a sharp edge ground to a very small or non-existing radius. It works sufficiently for most of standard wall insulation but is marginal for thin wall, cross-linked PVC, very rubbery insulations, woven fiber or thin-walled multi-conductors.

- TC Coating Available -



5-124434

ITEM NUMBER	OEM #	DESCRIPTION	CLASS
5-124434-1	401.7540	UNIVERSAL CUT/ STRIP	UN-V

SCHLEUNIGER PS 9500 MACHINE SERIES

TRU-RADIUS “V” STRIP BLADES CLASS: TR-V



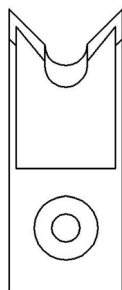
TRU-RADIUS “V” STRIP BLADE

The sharp edge is ground to a half circle whose radius approximates awg wire size. The entry angle lines intersect the half circle at the quadrant points. This type of blade, when closed, presents a true circle profile.

Advantages: This type of blade is excellent for precise and clean jacket removal because it combines the scissor-like shearing action of the by-pass blade with the exact hole profile matching a conductor gauge. Excellent for thin wall cross-link PVC and most rubbery or elastic insulations (thin or thick wall).

Disadvantages: Shut height cannot be modified to process adjacent wire sizes. Off center wire condition has to be considered when choosing blade size.

- TC Coating Available -



5-122567-XX

DIA MM SIZE	OEM #	ITEM NUMBER
0.4	PSP401.9502	5-122567-91
0.45	-----	5-122567-106
0.5	PSP401.9503	5-122567-88
0.55	-----	5-122567-92
0.6	PSP401.9504	5-122567-82
0.65	-----	5-122567-107
0.7	PSP401.9505	5-122567-90
0.8	PSP401.9506	5-122567-83
0.9	PSP401.9507	5-122567-93
1.0	PSP401.9508	5-122567-1
1.1	PSP401.9509	5-122567-2
1.2	PSP401.9510	5-122567-3
1.3	PSP401.9511	5-122567-4
1.4	PSP401.9512	5-122567-5
1.5	PSP401.9513	5-122567-6

DIA MM SIZE	OEM #	ITEM NUMBER
1.6	PSP401.9514	5-122567-7
1.7	-----	5-122567-8
1.8	PSP401.9516	5-122567-9
1.9	-----	5-122567-10
2.0	PSP401.9518	5-122567-11
2.1	-----	5-122567-12
2.2	PSP401.9520	5-122567-13
2.3	-----	5-122567-14
2.4	PSP401.9522	5-122567-15
2.5	-----	5-122567-16
2.6	PSP401.9524	5-122567-17
2.7	-----	5-122567-18
2.8	PSP401.9526	5-122567-19
2.9	-----	5-122567-20
3.0	PSP401.9528	5-122567-21

SCHLEUNIGER PS 9500 MACHINE SERIES

TRU-RADIUS “V” STRIP BLADES CLASS: TR-V

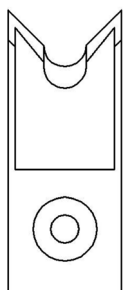
- ADDITIONAL PART NUMBER'S ON SUCCEEDING PAGE -

• THREE LAKES, WI (715) 546-3070 • CONTACT LAKES PRECISION • EL PASO, TX (915) 856-6606 •

• EMAIL: BLADES@LAKESPRECISION.COM •

SCHLEUNIGER PS 9500 MACHINE SERIES

TRU-RADIUS “V” STRIP BLADES CLASS: TR-V ADDITIONAL PART NUMBER’S



5-122567-XX

DIA MM SIZE	OEM #	ITEM NUMBER
3.1	-----	5-122567-22
3.2	PSP401.9530	5-122567-23
3.3	-----	5-122567-24
3.4	PSP401.9532	5-122567-25
3.5	PSP401.9533	5-122567-26
3.6	PSP401.9534	5-122567-27
3.7	-----	5-122567-28
3.8	PSP401.9536	5-122567-29
3.9	-----	5-122567-30
4.0	PSP401.9538	5-122567-31
4.1	-----	5-122567-32
4.2	PSP401.9540	5-122567-33
4.3	-----	5-122567-34
4.4	PSP401.9542	5-122567-35
4.5	PSP401.9543	5-122567-36
4.6	PSP401.9544	5-122567-37
4.7	-----	5-122567-38
4.8	PSP401.9546	5-122567-39
4.9	-----	5-122567-40
5.0	PSP401.9548	5-122567-41
5.1	-----	5-122567-42
5.2	-----	5-122567-43
5.3	-----	5-122567-44
5.4	-----	5-122567-45
5.5	PSP401.9553	5-122567-46
5.6	-----	5-122567-47

DIA MM SIZE	OEM #	ITEM NUMBER
5.7	-----	5-122567-48
5.8	-----	5-122567-49
5.9	-----	5-122567-50
6.0	PSP401.9558	5-122567-51
6.1	-----	5-122567-52
6.2	-----	5-122567-53
6.3	-----	5-122567-54
6.4	-----	5-122567-55
6.5	PSP401.9563	5-122567-56
6.6	-----	5-122567-57
6.7	-----	5-122567-58
6.8	-----	5-122567-59
6.9	-----	5-122567-60
7.0	PSP401.9568	5-122567-61
7.1	-----	5-122567-62
7.2	PSP401.9570	5-122567-63
7.3	-----	5-122567-64
7.4	-----	5-122567-65
7.5	PSP401.9573	5-122567-66
7.6	-----	5-122567-67
7.7	-----	5-122567-68
7.8	-----	5-122567-69
7.9	-----	5-122567-70
8.0	PSP401.9578	5-122567-71
8.1	-----	5-122567-72
8.2	-----	5-122567-73

DIA MM SIZE	OEM #	ITEM NUMBER
8.3	-----	5-122567-74
8.4	-----	5-122567-75
8.5	PSP401.9583	5-122567-76
8.6	-----	5-122567-77
8.7	-----	5-122567-78
8.8	-----	5-122567-79
8.9	-----	5-122567-80
9.0	PSP401.9588	5-122567-81
9.1	-----	5-122567-105
9.3	-----	5-122567-99
9.5	PSP401.9593	5-122567-85
9.7	-----	5-122567-100
9.9	-----	5-122567-89
10.0	PSP401.9598	5-122567-84
10.1	-----	5-122567-104
10.3	-----	5-122567-98
10.4	-----	5-122567-94
10.5	PSP401.9597	5-122567-95
10.6	-----	5-122567-96
10.7	-----	5-122567-101
11.0	PSP401.9599	5-122567-87
11.2	-----	5-122567-102
11.4	-----	5-122567-103
11.5	-----	5-122567-97
12.0	PSP401.9600	5-122567-86

• THREE LAKES, WI (715) 546-3070 • CONTACT LAKES PRECISION • EL PASO, TX (915) 856-6606 •

• EMAIL: BLADES@LAKESPRECISION.COM •

SCHLEUNIGER PS 9500 MACHINE SERIES

UNIVERSAL STRIP BLADES CLASS: UNI-V



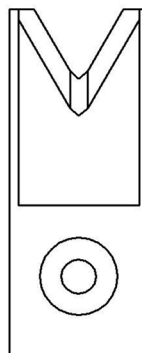
PATENTED DESIGN UNI-V UNIVERSAL STRIP BLADES

The sharp edge is ground to an arc that has a small radius. The entry angle lines meet the arc at a tangent point. Unique to this form is an auxiliary angle that intersects the entry angle. This results in greater insulation penetration and a better strip. This patented blade type allows wire sizes from 26 awg to 10 awg to be processed using a single set of blades.

- MADE TO CUSTOMER WIRE SAMPLE -

PLEASE SEND WIRE SAMPLES TO LAKES PRECISION, INC.

- *TC Coating Available* -



5-123036

PATENTED UNI-V

5-123036-XX CONSISTS OF:(2) 123036, (2) 122562-2, & (1) 122327-2

• *THREE LAKES, WI (715) 546-3070* • **CONTACT LAKES PRECISION** • *EL PASO, TX (915) 856-6606* •
• *EMAIL: BLADES@LAKESPRECISION.COM* •

SCHLEUNIGER PS 9500 MACHINE SERIES

2 CONDUCTOR COLLINEAR RADIUS CUT / STRIP BLADES CLASS: CL-R



COLLINEAR RADIUS CUT / STRIP BLADE

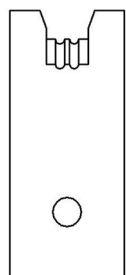
The sharp edge is ground to a half circle whose radius approximates awg wire size. Shearing edge is ground to a straight edge. This type of blade, when closed to shut height, forms a perfect circle profile.

Advantages: This type of blade is excellent for precise and clean jacket removal because it exactly matches conductor gauge. Excellent for thin-wall cross-link PVC and most applications where precise jacket removal around the conductor is required, especially with layered coverings such as fiber over plastic, plastic over shields, etc.

Disadvantages: Shut height cannot be modified to process adjacent wire sizes. Off-center wire condition has to be considered when choosing blade size.

- For blades to meet your specific application, please contact Lakes Precision, Inc.

- *TC Coating Available / Wire Sample Required* -



5-122572-XX
OEM # 401.9909

ITEM NUMBER	MARK	ITEM NUMBER	MARK	ITEM NUMBER	MARK	ITEM NUMBER	MARK
5-122572-1	1.2 / 2.0 2L 5.8	5-122572-20	1.7 / 3.1 2L 7.6	5-122572-39	1.7 / 2.8 2L 5.6	5-122572-58	1.2 / 3.5 2L 7.1
5-122572-2	2.3 / 2.0 2L 5.8	5-122572-21	3.1 / 4.55 2L 9.10	5-122572-40	1.1 / 2.0 2L 4.4	5-122572-59	1.7 / 3.7 2L 7.1
5-122572-3	1.6 / 2.3 2L 6.35	5-122572-22	2.4 / 3.2 2L 6.4	5-122572-41	1.6 / 3.8 2L 8.2	5-122572-60	1.4 / 3.2 2L 6.1
5-122572-4	2.8 / 2.3 2L 6.35	5-122572-23	1.8 / 2.6 2L 5.2	5-122572-42	1.1 / 2.05 2L 3.7	5-122572-61	1.3 / 2.8 2L 5.6
5-122572-5	1.0 / 1.5 2L 3.0	5-122572-24	1.0 / 2.0 2L 4.0	5-122572-43	1.5 / 3.0 2L 5.5	5-122572-62	1.6 / 3.0 2L 6.2
5-122572-6	3.5 / 3.4 2L 7.7	5-122572-25	1.5 / 2.3 2L 4.6	5-122572-44	0.9 / 1.3 2L 2.6	5-122572-63	1.8 / 3.3 2L 6.7
5-122572-7	1.5 / 3.4 2L 7.7	5-122572-26	2.0 / 2.8 2L 5.6	5-122572-45	1.8 / 1.8 2L 4.0	5-122572-64	0.7 / 1.1 2L 2.4
5-122572-8	1.2 / 4.9 2L 6.4	5-122572-27	2.2 / 3.0 2L 6.0	5-122572-46	1.8 / 1.6 2L 3.9	5-122572-65	0.4 / 0.7 2L 1.9
5-122572-9	0.9 / 1.6 2L 3.3	5-122572-28	2.6 / 4.7 2L 8.6	5-122572-47	1.1 / 1.6 2L 3.2	5-122572-66	1.10 / 3.8 2L 8.4
5-122572-10	1.0 / 2.0 2L 3.5	5-122572-29	1.5 / 2.3 2L 4.8	5-122572-48	1.2 / 2.1 2L 5.4	5-122572-67	1.20 / 3.7 2L 7.0
5-122572-11	1.0 / 2.9 2L 6.1	5-122572-30	1.2 / 2.3 2L 6.1	5-122572-49	1.6 / 2.3 2L 4.8	5-122572-68	1.10 / 3.3 2L 6.9
5-122572-12	1.9 / 2.9 2L 6.1	5-122572-31	1.2 / 2.3 2L 5.5	5-122572-50	1.8 / 2.9 2L 5.9	5-122572-69	1.40 / 3.70 2L 7.9
5-122572-13	2.0 / 3.2 2L 6.6	5-122572-32	1.7 / 2.7 2L 6.6	5-122572-51	1.0 / 1.5 2L 4.6	5-122572-70	1.20 / 3.40 2L 7.7
5-122572-14	2.5 / 3.6 2L 7.2	5-122572-33	1.3 / 2.4 2L 5.8	5-122572-52	1.1 / 1.8 2L 3.6	5-122572-71	0.60 / 1.3 2L 2.5
5-122572-15	1.5 / 3.2 2L 6.6	5-122572-34	2.0 / 3.0 2L 7.2	5-122572-53	1.4 / 2.2 2L 4.4	5-122572-72	0.80 / 1.6 2L 3.4
5-122572-16	1.2 / 2.4 2L 4.9	5-122572-35	1.3 / 2.5 2L 5.0	5-122572-54	1.8 / 1.5 2L 3.8	5-122572-73	3.70 / 4.50 2L 9.7
5-122572-17	1.3 / 3.1 2L 7.6	5-122572-36	1.2 / 2.7 2L 5.4	5-122572-55	1.1 / 1.5 2 L 3.8	5-122572-74	3.10 / 5.10 2L 9.6
5-122572-18	0.9 / 2.0 2L 4.6	5-122572-37	0.3 / 0.4 2L 0.97	5-122572-56	1.0 / 1.3 2 L 2.6	5-122572-75	0.85 / 1.25 2L 2.5
5-122572-19	1.5 / 2.0 2L 4.2	5-122572-38	1.9 / 2.7 2L 5.4	5-122572-57	1.0 / 2.1 2L 4.2	5-122573-76	1.60 / 2.25 2L 4.5

• THREE LAKES, WI (715) 546-3070 • CONTACT LAKES PRECISION • EL PASO, TX (915) 856-6606 •

• EMAIL: BLADES@LAKESPRECISION.COM •

SCHLEUNIGER PS 9500 MACHINE SERIES

3 CONDUCTOR COLLINEAR RADIUS STRIP BLADES CLASS: CL-R



COLLINEAR RADIUS STRIP BLADE

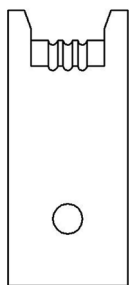
The sharp edge is ground to a half circle whose radius approximates awg wire size. Shearing edge is ground to a straight edge. This type of blade, when closed to shut height, forms a perfect circle profile.

Advantages: This type of blade is excellent for precise and clean jacket removal because it exactly matches conductor gauge. Excellent for thin-wall cross-link PVC and most applications where precise jacket removal around the conductor is required, especially with layered coverings such as fiber over plastic, plastic over shields, etc.

Disadvantages: Shut height cannot be modified to process adjacent wire sizes. Off-center wire condition has to be considered when choosing blade size.

- For blades to meet your specific application, please contact Lakes Precision, Inc.

- *TC Coating Available / Wire Sample Required* -



5-123390-XX

OEM # 401.9911

5-123390 INCLUDES:

(2) 123390-X, (2)
122562-2 & (1)
122327-2

MARK	ITEM NUMBER	DESCRIPTION
1.6 / 2.2 3L 6.6	5-123390-1	3 CONDUCTOR CUT / STRIP
2.2 / 3.1 3L 9.3	5-123390-2	3 CONDUCTOR CUT / STRIP
1.3 / 2.6 3L 7.6	5-123390-3	3 CONDUCTOR CUT / STRIP
1.5 / 2.03L 6.2	5-123390-4	3 CONDUCTOR CUT / STRIP
1.5 / 2.05 3L 6.15	5-123390-5	3 CONDUCTOR CUT / STRIP
1.2 / 1.5 3L 4.5	5-123390-6	3 CONDUCTOR CUT / STRIP
1.5 / 2.6 3L 7.8	5-123390-7	3 CONDUCTOR CUT / STRIP
1.3 / 2.2 3L 6.6	5-123390-8	3 CONDUCTOR CUT / STRIP
1.8 / 2.8 3L 8.4	5-123390-9	3 CONDUCTOR CUT / STRIP
0.8 / 1.5 3L 4.3	5-123390-10	3 CONDUCTOR CUT / STRIP
1.3 / 2.7 3L 8.0	5-123390-11	3 CONDUCTOR CUT / STRIP
1.3 / 2.5 3L 8.9	5-123390-12	3 CONDUCTOR CUT / STRIP
1.6 / 2.7 3L 9.4	5-123390-13	3 CONDUCTOR CUT / STRIP
2.0 / 3.0 3L 10.3	5-123390-14	3 CONDUCTOR CUT / STRIP
0.45 / 1.27 3L 3.8	5-123390-15	3 CONDUCTOR CUT / STRIP

MARK	ITEM NUMBER	DESCRIPTION
0.8 / 2.0 3L 6.6	5-123390-16	3 CONDUCTOR CUT / STRIP
1.6 / 2.8 3L 8.8	5-123390-17	3 CONDUCTOR CUT / STRIP
0.7 / 1.9 3L 4.9	5-123390-18	3 CONDUCTOR CUT / STRIP
0.9 / 1.3 3L 3.9	5-123390-19	3 CONDUCTOR CUT / STRIP
0.9 / 2.6 3L 6.4	5-123390-20	3 CONDUCTOR CUT / STRIP
1.6 / 2.5 3L 7.5	5-123390-21	3 CONDUCTOR CUT / STRIP
1.3 / 2.9 3L 8.7	5-123390-22	3 CONDUCTOR CUT / STRIP
1.2 / 2.7 3L 8.5	5-123390-23	3 CONDUCTOR CUT / STRIP
1.6 / 2.9 3L 6.1	5-123390-24	3 CONDUCTOR CUT / STRIP
2.0 / 3.2 3L 7.0	5-123390-25	3 CONDUCTOR CUT / STRIP
1.5 / 2.8 3L 8.4	5-123390-26	3 CONDUCTOR CUT/STRIP
1.3 / 2.5 3L 8.65	5-123390-27	3 CONDUCTOR CUT / STRIP
1.3 / 2.7 3L 9.5	5-123390-28	3 CONDUCTOR CUT / STRIP
1.3 / 2.2 3L 7.15	5-123390-29	3 CONDUCTOR CUT / STRIP
1.8 / 3.15 3L 9.45	5-123390-30	3 CONDUCTOR CUT/ STRIP
0.90 / 2.54 3L 6.50	5-123390-31	3 CONDUCTOR CUT / STRIP

• THREE LAKES, WI (715) 546-3070 • **CONTACT LAKES PRECISION** • EL PASO, TX (915) 856-6606 •

• EMAIL: BLADES@LAKESPRECISION.COM •

SCHLEUNIGER PS 9500 MACHINE SERIES

4 CONDUCTOR COLLINEAR RADIUS STRIP BLADES CLASS: CL-R

COLLINEAR RADIUS STRIP BLADE

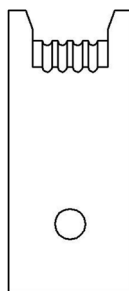
The sharp edge is ground to a half circle whose radius approximates awg wire size. Shearing edge is ground to a straight edge. This type of blade, when closed to shut height, forms a perfect circle profile.

Advantages: This type of blade is excellent for precise and clean jacket removal because it exactly matches conductor gauge. Excellent for thin-wall cross-link PVC and most applications where precise jacket removal around the conductor is required, especially with layered coverings such as fiber over plastic, plastic over shields, etc.

Disadvantages: Shut height cannot be modified to process adjacent wire sizes. Off-center wire condition has to be considered when choosing blade size.

- For blades to meet your specific application, please contact Lakes Precision, Inc.

- *TC Coating Available / Wire Sample Required* -



5-123317

OEM # 401.9913

5-123317 INCLUDES (2) 123317-X, (2) 122562-2 & (1) 122327-2

DIA MM SIZE	ITEM NUMBER	DESCRIPTION
1.2 / 2.4 4L 8.6	5-123317-1	4 COND CUT / STRIP
0.8 / 2.5 4L 9.0	5-123317-2	4 COND CUT / STRIP
1.2 / 2.0 4L 7.4	5-123317-3	4 COND CUT / STRIP
0.8 / 1.3 4L 5.2	5-123317-4	4 COND CUT / STRIP
0.7 / 1.4 4L 5.6	5-123317-5	4 COND CUT / STRIP
0.6 / 1.1 4L 4.4	5-123317-6	4 COND CUT / STRIP
0.9 / 1.3 4L 5.1	5-123317-7	4 COND CUT / STRIP
1.5 / 2.7 4L 11.0	5-123317-8	4 COND CUT / STRIP
0.6 / 2.54 4L 12.7	5-123317-9	4 COND CUT / STRIP
1.8 / 2.7 4L 10.7	5-123317-10	4 COND CUT / STRIP
1.0 / 2.5 4L 9.8	5-123317-11	4 COND CUT / STRIP
1.3 / 2.5 4L 9.8	5-123317-12	4 COND CUT / STRIP
1.3 / 0.95 4L 5.2	5-123317-13	4 COND CUT / STRIP
1.4 / 2.7 4L 10.8	5-123317-14	4 COND CUT / STRIP
0.6 / 1.0 4L 3.7	5-123317-15	4 COND CUT / STRIP
0.5 / 1.27 4L 5.1	5-123317-16	4 COND CUT / STRIP
1.0 / 1.35 4L 5.4	5-123317-17	4 COND CUT / STRIP

• THREE LAKES, WI (715) 546-3070 • **CONTACT LAKES PRECISION** • EL PASO, TX (915) 856-6606 •

• EMAIL: BLADES@LAKESPRECISION.COM •

SCHLEUNIGER PS 9500 MACHINE SERIES

COLLINEAR ANGLE CUT-OFF BLADES CLASS: CL-A



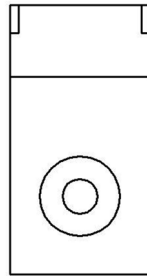
COLLINEAR ANGLE CUT-OFF BLADE

Sharp edges cut by compression.

This class of blade was designed to allow positive control of cutter head closure. It also allows precision processing of specific wire sizes with an inherent blade longevity.

This type of blade is used with collinear radius strip blades.

- *TC Coating Available* -



122950

ITEM NUMBER	DESCRIPTION	CLASS
122950	CL-A CUT-OFF	CL-A

SCHLEUNIGER PS 9500 MACHINE SERIES

TANGENT RADIUS “V” STRIP BLADES CLASS: TA-V



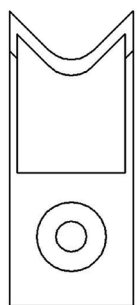
TANGENT RADIUS “V” STRIP BLADES

The sharp edge is ground to an arc whose radius approximates awg wire size. The entry angle lines meet the arc at a tangent point. This type of blade, when closed, presents a diamond shaped edge profile.

Advantages: By adjusting cutter head shut height, (if insulation material and wall thickness allow), you can process adjacent wire extrusions.

Disadvantages: Inadequate for processing thin wall and/or hard insulations such as cross-link or fiberglass jackets.

- TC Coating Available -



5-123040

DIAMM SIZE	ITEM NUMBER	OEM #	DESCRIPTION
0.4	5-123040-12	-----	TA-V STRIP
1.0	5-123040-7	-----	TA-V STRIP
1.3	5-123040-14	-----	TA-V STRIP
1.6	5-123040-16	-----	TA-V STRIP
2.0	5-123040-5	-----	TA-V STRIP
2.8	5-123040-17	-----	TA-V STRIP
3.0	5-123040-6	-----	TA-V STRIP
2.4	5-123040-11	-----	TA-V STRIP
3.4	5-123040-10	-----	TA-V STRIP
3.5	5-123040-18	-----	TA-V STRIP
4.0	5-123040-1	401.9953	TA-V STRIP
4.3	5-123040-19	-----	TA-V STRIP
4.5	5-123040-26	-----	TA-V STRIP
4.8	5-123040-20	-----	TA-V STRIP
5.0	5-123040-27	-----	TA-V STRIP

DIAMM SIZE	ITEM NUMBER	OEM #	DESCRIPTION
5.2	5-123040-21	-----	TA-V STRIP
5.5	5-123040-22	-----	TA-V STRIP
6.0	5-123040-2	401.9954	TA-V STRIP
6.2	5-123040-23	-----	TA-V STRIP
6.5	5-123040-9	-----	TA-V STRIP
6.6	5-123040-8	-----	TA-V STRIP
7.0	5-123040-29	-----	TA-V STRIP
8.0	5-123040-3	401.9955	TA-V STRIP
9.0	5-123040-4	-----	TA-V STRIP
9.7	5-123040	-----	TA-V STRIP
10.0	5-123040-15	-----	TA-V STRIP
10.8	5-123040-25	-----	TA-V STRIP
12.0	5-123040-13	-----	TA-V STRIP
13.0	5-123040-28	-----	TA-V STRIP

• THREE LAKES, WI (715) 546-3070 • CONTACT LAKES PRECISION • EL PASO, TX (915) 856-6606 •

• EMAIL: BLADES@LAKESPRECISION.COM •

SCHLEUNIGER PS 9500 MACHINE SERIES

WIDE ENTRY ANGLE CUT / STRIP BLADES CLASS: WE-A

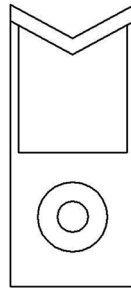


WIDE ENTRY ANGLE

The sharp edge is ground at an angle that results in a “V” opening above 90 degrees.

Characteristics: Wide angle is not as effective for gathering wire towards the operating radius. This type works well for gathering thick, soft insulations, (such as ignition wire).

- TC Coating Available -



5-122844

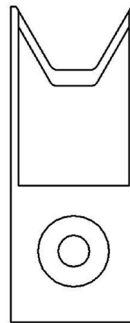
ITEM NUMBER	DESCRIPTION	CLASS
5-122844	WE-A CUT / STRIP	WE-A

SPECIAL APPLICATION BLADES

Lakes Precision, Inc. also provides blades for special applications. A few examples are shown here. For blades to meet your specific application please contact Lakes Precision, Inc.

- SEND CUSTOMER WIRE SAMPLE TO LAKES PRECISION, INC.

- *TC Coating Available* -



5-123010

5-123010-XX CONSISTS OF:(2) 123010-XX, (2) 122562-2, & (1) 122327-2-

SCHLEUNIGER PS 9500 MACHINE SERIES

TANGENT RADIUS “V” STRIP BLADES CLASS: NE-A / TA-V



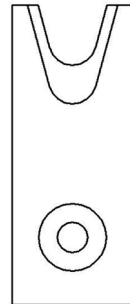
TANGENT RADIUS “V” CUT / STRIP BLADES

The sharp edge is ground to an arc whose radius approximates awg wire size. The entry angle lines meet the arc at a tangent point. This type of blade, when closed, presents a diamond shaped edge profile.

Advantages: By adjusting cutter head shut height, (if insulation material and wall thickness allow), you can process adjacent wire extrusions.

Disadvantages: Inadequate for processing thin wall and/or hard insulations such as cross-link or fiberglass jackets.

- TC Coating Available -



5-123227

DIA MM SIZE	ITEM NUMBER	DESCRIPTION
6.4	5-123227-1	NE-A / TA-V STRIP
7.9	5-123227-2	NE-A / TA-V STRIP

5-123227 CONSISTS OF: (2) 123227, (2) 122562-2 & (1) 122327-2

SCHLEUNIGER PS 9500 MACHINE SERIES

UNIVERSAL CUT / STRIP BLADES (3 BLADES OPTION) CLASS: UN-V

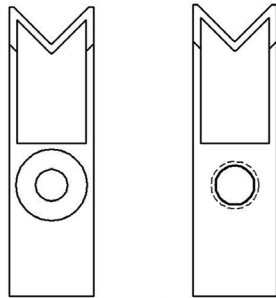


UNIVERSAL CUT / STRIP BLADES

The sharp edge is ground at an angle that results in a “V” opening of exactly 90 degrees.

Characteristics: 90 degree angle is widely accepted as the best entry angle to use for processing a wide range of wire sizes using the same blade setup. Most of the time, this class of blade incorporates a sharp edge ground to a very small or non-existing radius. It works sufficiently for most of standard wall insulation but is marginal for thin wall, cross-linked PVC, very rubbery insulations, woven fiber or thin-walled multi-conductors.

- TC Coating Available -



123289

123290

5-123291

MM WIDTH	ITEM NUMBER	OEM #	DESCRIPTION
10.6	5-123291	401.9010	UN-V CUT / STRIP

5-123291 CONSISTS OF 1PC. 123289 & 1PC. 123290

• THREE LAKES, WI (715) 546-3070 • **CONTACT LAKES PRECISION** • EL PASO, TX (915) 856-6606 •
• EMAIL: BLADES@LAKESPRECISION.COM •

SCHLEUNIGER PS 9500 MACHINE SERIES

TRU-RADIUS CUT / STRIP BLADES (3 BLADE OPTION) CLASS: TR-V



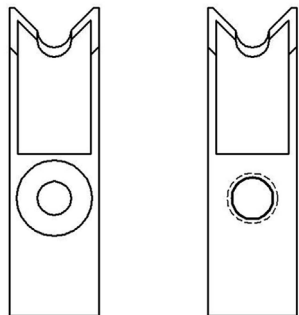
TRU-RADIUS CUT / STRIP BLADE

The sharp edge is ground to a half circle whose radius approximates awg wire size. The entry angle lines intersect the half circle at the quadrant points. This type of blade, when closed, presents a true circle profile.

Advantages: This type of blade is excellent for precise and clean jacket removal because it combines the scissor-like shearing action of the by-pass blade with the exact hole profile matching a conductor gauge. Excellent for thin wall cross-link PVC and most rubbery or elastic insulations (thin or thick wall).

Disadvantages: Shut height cannot be modified to process adjacent wire sizes. Off center wire condition has to be considered when choosing blade size.

- TC Coating Available -



123292-XX

123293-XX

5-123294-XX

5-123294 CONSISTS OF 1PC. 123292-XX & 1PC. 123293-XX

DIA MM SIZE	OEM #	ITEM NUMBER
0.4	PSP401.9602	5-123294-64
0.5	PSP401.9603	5-123294-65
0.6	PSP401.9604	5-123294-66
0.7	PSP401.9605	5-123294-67
0.8	PSP401.9606	5-123294-68
0.9	PSP401.9607	5-123294-69
1.0	PSP401.9608	5-123294-1
1.1	PSP401.9609	5-123294-2
1.2	PSP401.9610	5-123294-3
1.3	PSP401.9611	5-123294-4
1.4	PSP401.9612	5-123294-5
1.5	PSP401.9613	5-123294-6
1.6	PSP401.9614	5-123294-7

DIA MM SIZE	OEM #	ITEM NUMBER
1.7	PSP401.9615	5-123294-8
1.8	PSP401.9616	5-123294-9
1.9	PSP401.9617	5-123294-10
2.0	PSP401.9618	5-123294-11
2.1	PSP401.9619	5-123294-12
2.2	PSP401.9620	5-123294-13
2.3	PSP401.9621	5-123294-14
2.4	PSP401.9622	5-123294-15
2.5	PSP401.9623	5-123294-16
2.6	PSP401.9624	5-123294-17
2.7	PSP401.9625	5-123294-18
2.8	PSP401.9626	5-123294-19
2.9	PSP401.9627	5-123294-20

SCHLEUNIGER PS 9500 MACHINE SERIES

TRU-RADIUS CUT / STRIP BLADES (3 BLADE OPTION) CLASS: TR-V

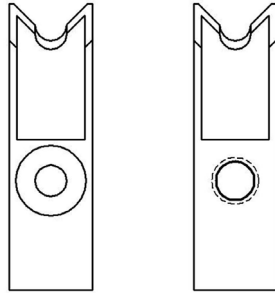
- ADDITIONAL PART NUMBER'S ON SUCCEEDING PAGE -

• THREE LAKES, WI (715) 546-3070 • CONTACT LAKES PRECISION • EL PASO, TX (915) 856-6606 •

• EMAIL: BLADES@LAKESPRECISION.COM •

SCHLEUNIGER PS 9500 MACHINE SERIES

TRU-RADIUS CUT / STRIP BLADES (3 BLADE OPTION) CLASS: TR-V



123292-XX

123293-XX

5-123294-XX

5-123294 CONSISTS OF 1PC. 123292-XX & 1PC. 123293-XX

DIA MM SIZE	OEM #	ITEM NUMBER
3.0	PSP401.9628	5-123294-21
3.1	PSP401.9629	5-123294-22
3.2	PSP401.9630	5-123294-23
3.3	PSP401.9631	5-123294-24
3.4	PSP401.9632	5-123294-25
3.5	PSP401.9633	5-123294-26
3.6	PSP401.9634	5-123294-27
3.7	PSP401.9635	5-123294-28
3.8	PSP401.9636	5-123294-29
3.9	PSP401.9637	5-123294-30
4.0	PSP401.9638	5-123294-31
4.1	PSP401.9639	5-123294-32
4.2	PSP401.9640	5-123294-33
4.3	PSP401.9641	5-123294-34
4.4	PSP401.9642	5-123294-35
4.5	PSP401.9643	5-123294-36
4.6	PSP401.9644	5-123294-37
4.7	PSP401.9645	5-123294-38
4.8	PSP401.9646	5-123294-39
4.9	PSP401.9647	5-123294-40
5.0	PSP401.9648	5-123294-41
5.1	PSP401.9649	5-123294-42

DIA MM SIZE	OEM #	ITEM NUMBER
5.2	PSP401.9650	5-123294-43
5.3	PSP401.9651	5-123294-44
5.4	PSP401.9652	5-123294-45
5.5	PSP401.9653	5-123294-46
5.6	PSP401.9654	5-123294-47
5.7	PSP401.9655	5-123294-48
5.8	PSP401.9656	5-123294-49
5.9	PSP401.9657	5-123294-50
6.0	PSP401.9658	5-123294-51
6.1	PSP401.9659	5-123294-52
6.2	PSP401.9660	5-123294-53
6.3	PSP401.9661	5-123294-54
6.4	PSP401.9662	5-123294-55
6.5	PSP401.9663	5-123294-56
6.6	PSP401.9664	5-123294-57
6.7	PSP401.9665	5-123294-58
6.8	PSP401.9666	5-123294-59
6.9	PSP401.9667	5-123294-60
7.0	PSP401.9668	5-123294-62
7.2	PSP401.9670	5-123294-61
7.5	PSP401.9673	5-123294-70
8.0	PSP401.9678	5-123294-71
8.5	-----	5-123294-63

• THREE LAKES, WI (715) 546-3070 • CONTACT LAKES PRECISION • EL PASO, TX (915) 856-6606 •

• EMAIL: BLADES@LAKESPRECISION.COM •

SCHLEUNIGER PS 9500RS MACHINE SERIES

COLLINEAR ANGLE ROTARY STRIP BLADES CLASS: CL-A



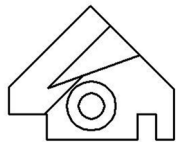
COLLINEAR ANGLE ROTARY STRIP BLADES

Sharp edge is ground to a flat collinear angle.

This class of blade was designed to allow multiple conductor wire to be processed with one set of blades. This class is also used in many rotary strip models. The main advantage of this class is the ability to process many different wire gauges with the same blades, (dependent upon machine function).

There will always be a percentage of insulation tear with this class of blade. This class does not work well with thin wall insulation.

- TC Coating Available -



123195

ITEM NUMBER	OEM #	MATERIAL	DESCRIPTION
123195-1	301.9401	TC COATED CARBIDE	CL-A ROTARY STRIP
123195-2	-----	TC COATED A2 TOOL STEEL	CL-A ROTARY STRIP
123195-3	-----	TC COATED M2 TOOL STEEL	CL-A ROTARY STRIP
123195-5	-----	CARBIDE	CLA-ROTARY STRIP

• THREE LAKES, WI (715) 546-3070 • **CONTACT LAKES PRECISION** • EL PASO, TX (915) 856-6606 •

• EMAIL: BLADES@LAKESPRECISION.COM •

SCHLEUNIGER PS 9550 MACHINE SERIES

COLLINEAR ANGLE ROTARY STRIP BLADES CLASS: CL-A



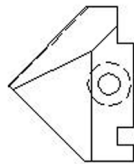
COLLINEAR ANGLE ROTARY STRIP BLADES

Sharp edge is ground to a flat collinear angle.

This class of blade was designed to allow multiple conductor wire to be processed with one set of blades. This class is also used in many rotary strip models. The main advantage of this class is the ability to process many different wire gauges with the same blades, (dependent upon machine function).

There will always be a percentage of insulation tear with this class of blade. This class does not work well with thin wall insulation.

- *TC Coating Available* -



124571

ITEM NUMBER	MATERIAL
124571-1	TC COATED CARBIDE
124571-2	TC COATED A2 TOOL STEEL
124571-3	TC COATED M2 TOOL STEEL

• THREE LAKES, WI (715) 546-3070 • **CONTACT LAKES PRECISION** • EL PASO, TX (915) 856-6606 •

• EMAIL: BLADES@LAKESPRECISION.COM •

SCHLEUNIGER PS 9550 MACHINE SERIES

UNIVERSAL CUT / STRIP BLADES CLASS: UN-V

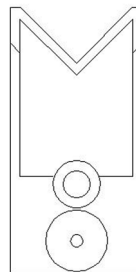


UNIVERSAL CUT / STRIP BLADES

The sharp edge is ground at an angle that results in a “V” opening of exactly 90 degrees.

Characteristics: 90 degree angle is widely accepted as the best entry angle to use for processing a wide range of wire sizes using the same blade setup. Most of the time, this class of blade incorporates a sharp edge ground to a very small or non-existing radius. It works sufficiently for most of standard wall insulation but is marginal for thin wall, cross-linked PVC, very rubbery insulations, woven fiber or thin-walled multi-conductors.

- *TC Coating Available* -



5-124556

**5-124556 CONSISTS OF 2PCS. OF 124556
OEM# 419016**

SCHLEUNIGER PS 9550 MACHINE SERIES

TANGENT RADIUS “V” STRIP BLADES CLASS: TA-V

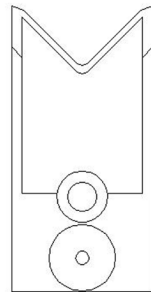
TANGENT RADIUS “V” STRIP BLADES

The sharp edge is ground to an arc whose radius approximates awg wire size. The entry angle lines meet the arc at a tangent point. This type of blade, when closed, presents a diamond shaped edge profile.

Advantages: By adjusting cutter head shut height, (if insulation material and wall thickness allow), you can process adjacent wire extrusions.

Disadvantages: Inadequate for processing thin wall and/or hard insulations such as cross-link or fiberglass jackets.

- TC Coating Available -



5-124505

5-124505-X CONSISTS OF 124505-X 2 PCS

OEM #	RADIUS SIZE MM	ITEM NUMBER
419935	1.00	5-124505-2.00
-----	1.50	5-124505-3.00
416064	2.00	5-124505-4.00
-----	2.80	5-124505-5.60

SCHLEUNIGER PS 9550 MACHINE SERIES

TRU-RADIUS CUT / STRIP BLADES CLASS: TR-V



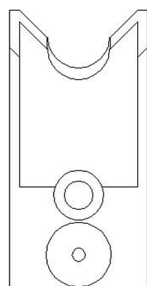
TRU-RADIUS CUT / STRIP BLADE

The sharp edge is ground to a half circle whose radius approximates awg wire size. The entry angle lines intersect the half circle at the quadrant points. This type of blade, when closed, presents a true circle profile.

Advantages: This type of blade is excellent for precise and clean jacket removal because it combines the scissor-like shearing action of the by-pass blade with the exact hole profile matching a conductor gauge. Excellent for thin wall cross-link PVC and most rubbery or elastic insulations (thin or thick wall).

Disadvantages: Shut height cannot be modified to process adjacent wire sizes. Off center wire condition has to be considered when choosing blade size.

- TC Coating Available -



5-124557

5-124557-X CONSISTS OF 2 PCS. OF 124557-X

DIA MM SIZE	OEM #	ITEM NUMBER
2.50	-----	5-124557-2.50
3.00	416080	5-124557-3.00
3.40	-----	5-124557-3.40
3.50	-----	5-124557-3.50
3.80	-----	5-124557-3.80
4.00	416082	5-124557-4.00
4.50	-----	5-124557-4.50
5.00	416099	5-124557-5.00
5.50	419561	5-124557-5.50
5.80	-----	5-124557-5.80
6.00	416065	5-124557-6.00
6.50	416101	5-124557-6.50
6.70	-----	5-124557-6.70
6.90	-----	5-124557-6.90
7.00	416066	5-124557-7.00

DIA MM SIZE	OEM #	ITEM NUMBER
7.20	-----	5-124557-7.20
7.50	419562	5-124557-7.50
8.00	416067	5-124557-8.00
8.50	416103	5-124557-8.50
9.00	416069	5-124557-9.00
9.50	-----	5-124557-9.50
10.00	416072	5-124557-10.00
10.50	-----	5-124557-10.50
11.00	416073	5-124557-11.00
11.50	-----	5-124557-11.50
12.00	416074	5-124557-12.00
12.50	-----	5-124557-12.50
13.00	416075	5-124557-13.00
13.50	-----	5-124557-13.50
14.00	416077	5-124557-14.00

• THREE LAKES, WI (715) 546-3070 • **CONTACT LAKES PRECISION** • EL PASO, TX (915) 856-6606 •

• EMAIL: BLADES@LAKESPRECISION.COM •

SCHLEUNIGER MEGA STRIP 9600 MACHINE SERIES

UNIVERSAL CUT / STRIP BLADES (20 mm) CLASS: UN-V

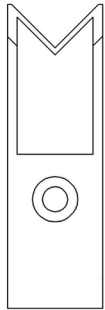


UNIVERSAL CUT / STRIP BLADES

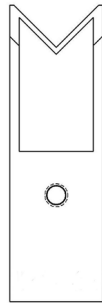
The sharp edge is ground at an angle that results in a “V” opening of exactly 90 degrees.

Characteristics: 90 degree angle is widely accepted as the best entry angle to use for processing a wide range of wire sizes using the same blade setup. Most of the time, this class of blade incorporates a sharp edge ground to a very small or non-existing radius. It works sufficiently for most of standard wall insulation but is marginal for thin wall, cross-linked PVC, very rubbery insulations, woven fiber or thin-walled multi-conductors.

- TC Coating Available -



123362



123363

5-123365

5-123365 CONSISTS OF 1 PC 123362 & 1 PC 123363

ITEM NUMBER	OEM #	DESCRIPTION
5-123365	402764	WIDE UN-V CUT / STRIP

SCHLEUNIGER MEGA STRIP 9600 MACHINE SERIES

UNIVERSAL CUT / STRIP BLADES (28 mm) CLASS: UN-V

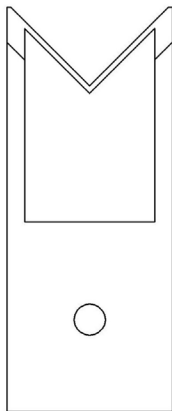


UNIVERSAL CUT / STRIP BLADES

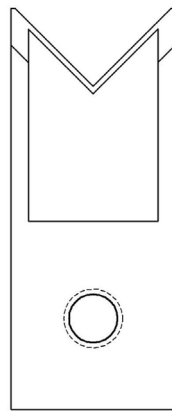
The sharp edge is ground at an angle that results in a “V” opening of exactly 90 degrees.

Characteristics: 90 degree angle is widely accepted as the best entry angle to use for processing a wide range of wire sizes using the same blade setup. Most of the time, this class of blade incorporates a sharp edge ground to a very small or non-existing radius. It works sufficiently for most of standard wall insulation but is marginal for thin wall, cross-linked PVC, very rubbery insulations, woven fiber or thin-walled multi-conductors.

- TC Coating Available -



123393



123394

5-123398

5-123398 CONSISTS OF 1 PC 123393 & 1 PC 123394

ITEM NUMBER	OEM #	DESCRIPTION
5-123398	402765	WIDE UN-V CUT / STRIP

SCHLEUNIGER MEGA STRIP 9600 MACHINE SERIES

TRU-RADIUS “V” STRIP BLADES (20 mm) CLASS: TR-V



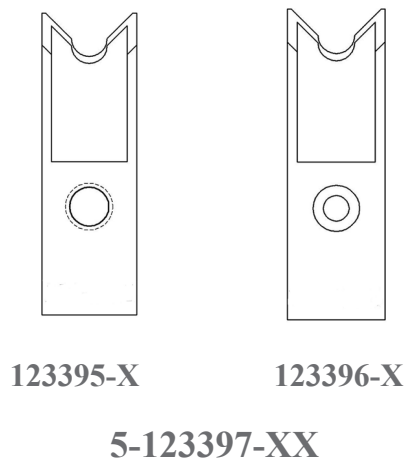
TRU-RADIUS STRIP BLADE

The sharp edge is ground to a half circle whose radius approximates awg wire size. The entry angle lines intersect the half circle at the quadrant points. This type of blade, when closed, presents a true circle profile.

Advantages: This type of blade is excellent for precise and clean jacket removal because it combines the scissor-like shearing action of the by-pass blade with the exact hole profile matching a conductor gauge. Excellent for thin wall cross-link PVC and most rubbery or elastic insulations (thin or thick wall).

Disadvantages: Shut height cannot be modified to process adjacent wire sizes. Off center wire condition has to be considered when choosing blade size.

- TC Coating Available -



ITEM NUMBER	OEM #	DESCRIPTION
5-123397-1.7	-----	TR-V BLADE
5-123397-2.0	402872	TR-V BLADE
5-123397-2.2	-----	TR-V BLADE
5-123397-2.4	-----	TR-V BLADE
5-123397-2.5	402873	TR-V BLADE
5-123397-2.8	-----	TR-V BLADE
5-123397-3.0	402874	TR-V BLADE
5-123397-3.2	-----	TR-V BLADE
5-123397-3.4	-----	TR-V BLADE
5-123397-3.5	402875	TR-V BLADE
5-123397-4.0	402876	TR-V BLADE
5-123397-4.5	402877	TR-V BLADE
5-123397-5.0	402878	TR-V BLADE
5-123397-5.5	402879	TR-V BLADE
5-123397-6.0	402880	TR-V BLADE

ITEM NUMBER	OEM #	DESCRIPTION
5-123397-6.5	402881	TR-V BLADE
5-123397-7.0	402882	TR-V BLADE
5-123397-7.5	402883	TR-V BLADE
5-123397-8.0	402884	TR-V BLADE
5-123397-8.5	402885	TR-V BLADE
5-123397-9.0	402886	TR-V BLADE
5-123397-9.5	402887	TR-V BLADE
5-123397-10.0	402865	TR-V BLADE
5-123397-10.5	402866	TR-V BLADE
5-123397-11.0	402867	TR-V BLADE
5-123397-11.5	402868	TR-V BLADE
5-123397-12.0	402869	TR-V BLADE
5-123397-12.5	402870	TR-B BLADE
5-123397-13.0	402871	TR-V BLADE

5-123397-XX CONSISTS OF 1 PC 123395-X & 1 PC 123396-X

• THREE LAKES, WI (715) 546-3070 • **CONTACT LAKES PRECISION** • EL PASO, TX (915) 856-6606 •
 • EMAIL: BLADES@LAKESPRECISION.COM •

SCHLEUNIGER MEGA STRIP 9600 MACHINE SERIES

TRU-RADIUS STRIP BLADES (28 mm) CLASS: TR-V



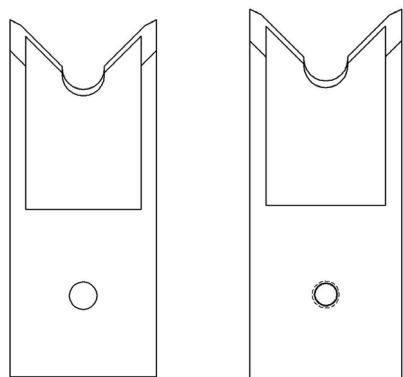
TRU-RADIUS STRIP BLADE

The sharp edge is ground to a half circle whose radius approximates awg wire size. The entry angle lines intersect the half circle at the quadrant points. This type of blade, when closed, presents a true circle profile.

Advantages: This type of blade is excellent for precise and clean jacket removal because it combines the scissor-like shearing action of the by-pass blade with the exact hole profile matching a conductor gauge. Excellent for thin wall cross-link PVC and most rubbery or elastic insulations (thin or thick wall).

Disadvantages: Shut height cannot be modified to process adjacent wire sizes. Off center wire condition has to be considered when choosing blade size.

- TC Coating Available -



123302-X

123303-X

5-123399-XX

5-123399-XX
CONSISTS OF
1 PC 123302-X &
1 PC 123303-X

MM SIZE	ITEM NUMBER	OEM #
0.8	5-123399-0.8	-----
1.0	5-123399-1.0	-----
1.3	5-123399-1.3	-----
1.5	5-123399-1.5	-----
2.0	5-123399-2.0	402849
2.4	5-123399-2.4	-----
2.5	5-123399-2.5	402850
2.9	5-123399-2.9	-----
3.0	5-123399-3.0	402851
3.1	5-123399-3.1	-----
3.2	5-123399-3.2	-----
3.4	5-123399-3.4	-----
3.5	5-123399-3.5	402852
3.6	5-123399-3.6	-----

MM SIZE	ITEM NUMBER	OEM #
3.7	5-123399-3.7	-----
3.8	5-123399-3.8	-----
4.0	5-123399-4.0	402853
4.1	5-123399-4.1	-----
4.2	5-123399-4.2	-----
4.3	5-123399-4.3	-----
4.5	5-123399-4.5	402854
4.8	5-123399-4.8	-----
5.0	5-123399-5.0	402855
5.1	5-123399-5.1	-----
5.2	5-123399-5.2	-----
5.5	5-123399-5.5	402856
5.6	5-123399-5.6	-----
5.9	5-123399-5.9	-----

MM SIZE	ITEM NUMBER	OEM #
6.0	5-123399-6.0	402857
6.2	5-123399-6.2	-----
6.5	5-123399-6.5	402858
6.7	5-123399-6.7	-----
6.9	5-123399-6.9	-----
7.0	5-123399-7.0	402859
7.25	5-123399-7.25	-----
7.5	5-123399-7.5	402860
7.6	5-123399-7.6	-----
7.7	5-123399-7.7	-----
7.9	5-123399-7.9	-----
8.0	5-123399-8.0	402861
8.2	5-123399-8.2	-----
8.3	5-123399-8.3	-----

SCHLEUNIGER PS 9600 MACHINE SERIES

TRU-RADIUS CUT / STRIP BLADES CLASS: TR-V

- ADDITIONAL PART NUMBER'S ON SUCCEEDING PAGE -

• THREE LAKES, WI (715) 546-3070 • CONTACT LAKES PRECISION • EL PASO, TX (915) 856-6606 •

• EMAIL: BLADES@LAKESPRECISION.COM •

SCHLEUNIGER MEGA STRIP 9600 MACHINE SERIES

TRU-RADIUS STRIP BLADES (28 mm) CLASS: TR-V



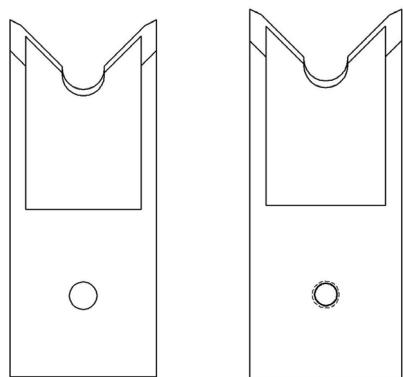
TRU-RADIUS STRIP BLADE

The sharp edge is ground to a half circle whose radius approximates awg wire size. The entry angle lines intersect the half circle at the quadrant points. This type of blade, when closed, presents a true circle profile.

Advantages: This type of blade is excellent for precise and clean jacket removal because it combines the scissor-like shearing action of the by-pass blade with the exact hole profile matching a conductor gauge. Excellent for thin wall cross-link PVC and most rubbery or elastic insulations (thin or thick wall).

Disadvantages: Shut height cannot be modified to process adjacent wire sizes. Off center wire condition has to be considered when choosing blade size.

- TC Coating Available -



123302-X

123303-X

5-123399-XX

5-123399-XX
CONSISTS OF
1 PC 123302-X &
1 PC 123303-X

MM SIZE	ITEM NUMBER	OEM #
8.4	5-123399-8.4	-----
8.5	5-123399-8.5	402862
8.8	5-123399-8.8	-----
9.0	5-123399-9.0	402863
9.2	5-123399-9.2	-----
9.5	5-123399-9.5	402864
9.6	5-123399-9.3	-----
10.0	5-123399-10.0	402836
10.2	5-123399-10.2	-----
10.5	5-123399-10.5	402837
10.6	5-123399-10.6	-----
11.0	5-123399-11.0	402838
11.5	5-123399-11.5	402839
11.7	5-123399-11.7	-----
12.0	5-123399-12.0	402840

MM SIZE	ITEM NUMBER	OEM #
12.5	5-123399-12.5	402841
13.0	5-123399-13.0	402842
13.5	5-123399-13.5	-----
13.9	5-123399-13.9	-----
14.0	5-123399-14.0	402843
14.5	5-123399-14.5	-----
14.7	5-123399-14.7	-----
15.0	5-123399-15.0	402844
15.5	5-123399-15.5	-----
16.0	5-123399-16.0	402845
16.5	5-123399-16.5	-----
17.0	5-123399-17.0	402846
18.0	5-123399-18.0	402847
19.0	5-123399-19.0	402848

• THREE LAKES, WI (715) 546-3070 • CONTACT LAKES PRECISION • EL PASO, TX (915) 856-6606 •

• EMAIL: BLADES@LAKESPRECISION.COM •

SCHLEUNIGER MEGA STRIP 9600 MACHINE SERIES

TANGENT RADIUS “V” STRIP BLADES (28 mm) CLASS: TA-V



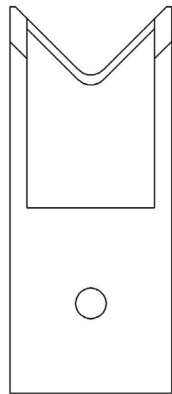
TANGENT RADIUS “V” STRIP BLADES

The sharp edge is ground to an arc whose radius approximates awg wire size. The entry angle lines meet the arc at a tangent point. This type of blade, when closed, presents a diamond shaped edge profile.

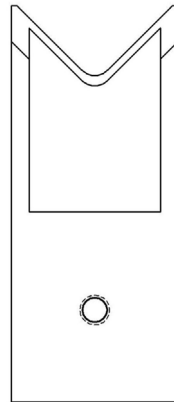
Advantages: By adjusting cutter head shut height, (if insulation material and wall thickness allow), you can process adjacent wire extrusions.

Disadvantages: Inadequate for processing thin wall and/or hard insulations such as cross-link or fiberglass jackets.

- TC Coating Available -



123304



123305

5-123400

5-123400-XX CONSISTS OF 1 PC 123304-X & 1 PC 123305-X

MM SIZE	ITEM NUMBER	OEM #	DESCRIPTION
5.0	5-123400-5.0	-----	TA-V STRIP
6.0	5-123400-6.0	402767	TA-V STRIP
6.5	5-123400-6.5	-----	TA-V STRIP
7.0	5-123400-7.0	-----	TA-V STRIP
8.5	5-123400-8.5	-----	TA-V STRIP
9.0	5-123400-9.0	-----	TA-V STRIP
10.0	5-123400-10.0	-----	TA-V STRIP
10.5	5-123400-10.5	-----	TA-V STRIP
12.0	5-123400-12.0	-----	TA-V STRIP
14.0	5-123400-14.0	-----	TA-V STRIP
18.0	5-123400-18.0	-----	TA-V STRIP

SCHLEUNIGER MEGA STRIP 9600 MACHINE SERIES

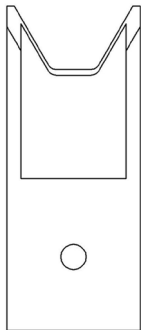
OVAL CUT / STRIP BLADES (28 mm) CLASS: TA-V



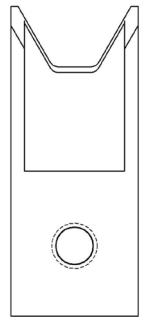
Lakes Precision, Inc. also provides blades for special applications. A few examples are shown here. For blades to meet your specific application please contact Lakes Precision, Inc.

- SEND CUSTOMER WIRE SAMPLE TO LAKES PRECISION, INC.

- *TC Coating Available* -



123827-X



123828-X

5-123829-X

5-123829-X CONSISTS OF:(1) PC 123827-X & (1) PC 123828-X

DIA MM SIZE	ITEM NUMBER	OEM #	DESCRIPTION
3.9-3.6CC	5-123829-1	-----	OVAL TA-V STRIP
3.9-7.2CC	5-123829-2	-----	OVAL TA-V STRIP
3.9-10.8CC	5-123829-3	-----	OVAL TA-V STRIP
3.3-3.3CC	5-123829-4	-----	OVAL TA-V STRIP

SCHLEUNIGER MEGA STRIP 9600 MACHINE SERIES

COLLINEAR RADIUS STRIP BLADES (28 mm) CLASS: CL-R



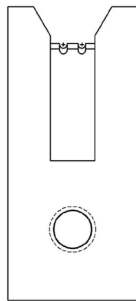
COLLINEAR RADIUS TYPE

The sharp edge is ground to a half circle whose radius approximates awg wire size. Shearing edge is ground to a straight edge. This type of blade, when closed to shut height, forms a perfect circle profile.

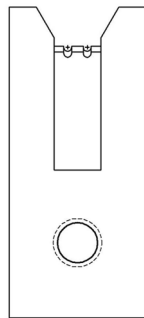
Advantages: This type of blade is excellent for precise and clean jacket removal because it exactly matches conductor gauge. Excellent for thin-wall cross-link PVC and most applications where precise jacket removal around the conductor is required, especially with layered coverings such as fiber over plastic, plastic over shields, etc.

Disadvantages: Shut height cannot be modified to process adjacent wire sizes. Off-center wire condition has to be considered when choosing blade size.

- TC Coating Available -



123824-X



123825-X

5-123826-X

5-123826-X CONSISTS OF 1 PC 123824-X & 1 PC 123825-X

DIA MM SIZE	ITEM NUMBER	OEM #	DESCRIPTION
2.0 / 3.6 2L 8.5	5-123826-1	403007	2 CONDUCTOR CL-R STRIP
2.1 / 3.1 2L 6.2	5-123826-2	-----	2 CONDUCTOR CL-R STRIP
1.8 / 2.7 2L 5.4	5-123826-3	-----	2 CONDUCTOR CL-R STRIP

• THREE LAKES, WI (715) 546-3070 • **CONTACT LAKES PRECISION** • EL PASO, TX (915) 856-6606 •

• EMAIL: BLADES@LAKESPRECISION.COM •

SCHLEUNIGER MEGA STRIP 9600 MACHINE SERIES

COLLINEAR RADIUS STRIP BLADES (28 mm) CLASS: CL-R



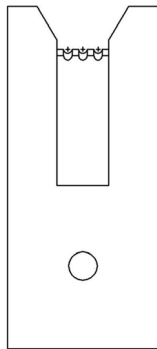
COLLINEAR RADIUS TYPE

The sharp edge is ground to a half circle whose radius approximates awg wire size. Shearing edge is ground to a straight edge. This type of blade, when closed to shut height, forms a perfect circle profile.

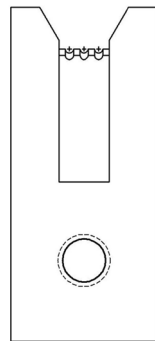
Advantages: This type of blade is excellent for precise and clean jacket removal because it exactly matches conductor gauge. Excellent for thin-wall cross-link PVC and most applications where precise jacket removal around the conductor is required, especially with layered coverings such as fiber over plastic, plastic over shields, etc.

Disadvantages: Shut height cannot be modified to process adjacent wire sizes. Off-center wire condition has to be considered when choosing blade size.

- TC Coating Available -



123594-X



123595-X

5-123596-X

5-123596-X CONSISTS OF 1 PC 123594-X & 1 PC 123595-X

DIA MM SIZE	ITEM NUMBER	OEM #	DESCRIPTION
1.6 / 2.7 3L 8.0	5-123596-1	403010	3 CONDUCTOR CL-R STRIP
2.0 / 3.6 3L 12.2	5-123596-2	-----	3 CONDUCTOR CL-R STRIP
2.1 / 3.1 3L 9.3	5-123596-3	-----	3 CONDUCTOR CL-R STRIP
1.8 / 2.7 3L 8.1	5-123596-4	-----	3 CONDUCTOR CL-R STRIP

• THREE LAKES, WI (715) 546-3070 • **CONTACT LAKES PRECISION** • EL PASO, TX (915) 856-6606 •

• EMAIL: BLADES@LAKESPRECISION.COM •

SCHLEUNIGER MEGA STRIP 9600 MACHINE SERIES

COLLINEAR RADIUS STRIP BLADES (28 mm) CLASS: CL-R



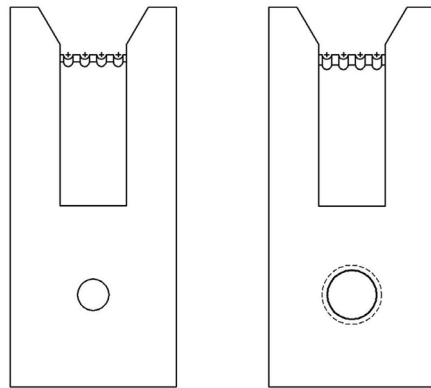
COLLINEAR RADIUS TYPE

The sharp edge is ground to a half circle whose radius approximates awg wire size. Shearing edge is ground to a straight edge. This type of blade, when closed to shut height, forms a perfect circle profile.

Advantages: This type of blade is excellent for precise and clean jacket removal because it exactly matches conductor gauge. Excellent for thin-wall cross-link PVC and most applications where precise jacket removal around the conductor is required, especially with layered coverings such as fiber over plastic, plastic over shields, etc.

Disadvantages: Shut height cannot be modified to process adjacent wire sizes. Off-center wire condition has to be considered when choosing blade size.

- TC Coating Available -



123592-X

123593-X

5-123597-X

5-123597-X CONSISTS OF 1 PC 123592-X & 1 PC 123593-X

DIA MM SIZE	ITEM NUMBER	OEM #	DESCRIPTION
1.6 / 2.8 4L 11.2	5-123597-1	403013-1149	4 CONDUCTOR CL-R STRIP
2.0 / 3.6 4L 15.9	5-123597-2	-----	4 CONDUCTOR CL-R STRIP
1.8 / 2.7 4L 10.8	5-123597-3	-----	4 CONDUCTOR CL-R STRIP
2.1 / 3.1 4L 12.4	5-123597-4	-----	4 CONDUCTOR CL-R STRIP

• THREE LAKES, WI (715) 546-3070 • **CONTACT LAKES PRECISION** • EL PASO, TX (915) 856-6606 •

• EMAIL: BLADES@LAKESPRECISION.COM •

SCHLEUNIGER MEGA STRIP 9600 MACHINE SERIES

COLLINEAR RADIUS STRIP BLADES (28 mm) CLASS: CL-R



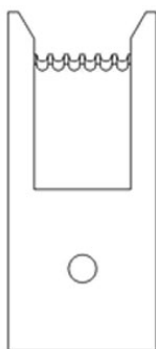
COLLINEAR RADIUS TYPE

The sharp edge is ground to a half circle whose radius approximates awg wire size. Shearing edge is ground to a straight edge. This type of blade, when closed to shut height, forms a perfect circle profile.

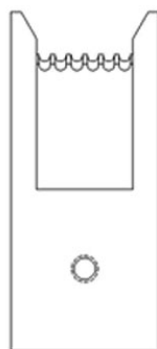
Advantages: This type of blade is excellent for precise and clean jacket removal because it exactly matches conductor gauge. Excellent for thin-wall cross-link PVC and most applications where precise jacket removal around the conductor is required, especially with layered coverings such as fiber over plastic, plastic over shields, etc.

Disadvantages: Shut height cannot be modified to process adjacent wire sizes. Off-center wire condition has to be considered when choosing blade size.

- TC Coating Available -



123592-X



123593-X

5-124783-X

5-124783-X CONSISTS OF 1 PC 123592-X & 1 PC 123593-X

DIA MM SIZE	ITEM NUMBER	OEM #	DESCRIPTION
2.2 / 3.05 6L 18.20	5-124783-1	-----	6 CONDUCTOR CL-R STRIP

• THREE LAKES, WI (715) 546-3070 • **CONTACT LAKES PRECISION** • EL PASO, TX (915) 856-6606 •

• EMAIL: BLADES@LAKESPRECISION.COM •

SCHLEUNIGER MEGA STRIP 9600 MACHINE SERIES

TRU-RADIUS STRIP BLADES (40 mm) CLASS: TR-V



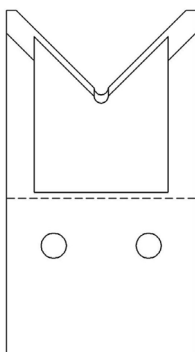
TRU-RADIUS STRIP BLADE

The sharp edge is ground to a half circle whose radius approximates awg wire size. The entry angle lines intersect the half circle at the quadrant points. This type of blade, when closed, presents a true circle profile.

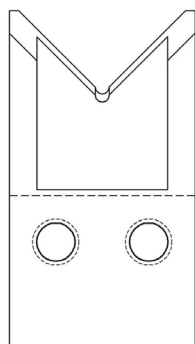
Advantages: This type of blade is excellent for precise and clean jacket removal because it combines the scissor-like shearing action of the by-pass blade with the exact hole profile matching a conductor gauge. Excellent for thin wall cross-link PVC and most rubbery or elastic insulations (thin or thick wall).

Disadvantages: Shut height cannot be modified to process adjacent wire sizes. Off center wire condition has to be considered when choosing blade size.

- TC Coating Available -



123510-X



123511-X

5-123512-XX

5-123512-XX CONSISTS OF 1 PC 123510-X & 1 PC 123511-X

MM SIZE	ITEM NUMBER	OEM #
2.0	5-123512-2.0	402815
2.5	5-123512-2.5	402816
3.0	5-123512-3.0	402822
3.5	5-123512-3.5	402823
4.0	5-123512-4.0	402824
4.5	5-123512-4.5	402825
5.0	5-123512-5.0	402826
5.5	5-123512-5.5	402827
6.0	5-123512-6.0	402828
6.5	5-123512-6.5	402829
7.0	5-123512-7.0	402830
7.5	5-123512-7.5	402831
8.0	5-123512-8.0	402832
8.5	5-123512-8.5	402833
9.0	5-123512-9.0	402834
9.5	5-123512-9.5	402835
10.0	5-123512-10.0	402801
10.2	5-123512-10.2	-----
10.5	5-123512-10.5	402803

MM SIZE	ITEM NUMBER	OEM #
11.0	5-123512-11.0	402804
11.5	5-123512-11.5	402805
12.0	5-123512-12.0	402806
12.5	5-123512-12.5	402807
13.0	5-123512-13.0	402808
13.5	5-123512-13.5	-----
14.0	5-123512-14.0	402809
14.3	5-123512-14.3	-----
15.0	5-123512-15.0	402810
16.0	5-123512-16.0	402811
17.0	5-123512-17.0	402812
17.8	5-123512-17.8	-----
18.0	5-123512-18.0	402813
19.0	5-123512-19.0	402814
20.0	5-123512-20.0	402817
21.0	5-123512-21.0	402818
22.0	5-123512-22.0	402819
23.0	5-123512-23.0	402820
24.0	5-123512-24.0	402821

• THREE LAKES, WI (715) 546-3070 • CONTACT LAKES PRECISION • EL PASO, TX (915) 856-6606 •

• EMAIL: BLADES@LAKESPRECISION.COM •

SCHLEUNIGER MEGA STRIP 9600 MACHINE SERIES

TANGENT ANGLE “V” STRIP BLADES (40 mm) CLASS: TA-V



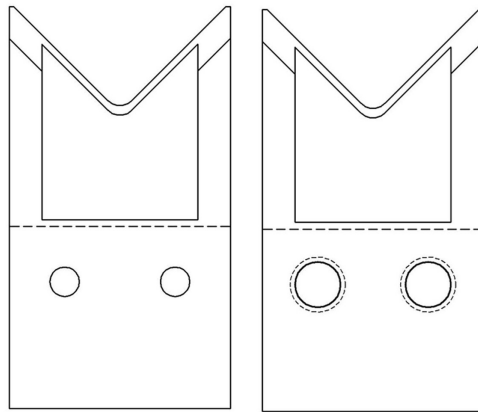
TANGENT RADIUS “V” STRIP BLADES

The sharp edge is ground to an arc whose radius approximates awg wire size. The entry angle lines meet the arc at a tangent point. This type of blade, when closed, presents a diamond shaped edge profile.

Advantages: By adjusting cutter head shut height, (if insulation material and wall thickness allow), you can process adjacent wire extrusions.

Disadvantages: Inadequate for processing thin wall and/or hard insulations such as cross-link or fiberglass jackets.

- TC Coating Available -



123513-X

123514-X

5-123515-XX

5-123515-XX CONSISTS OF 1 PC 123513-X & 1 PC 123514-X

MM SIZE	OEM #	ITEM NUMBER	DESCRIPTION
0.5	402766	5-123515-0.5	TA-V STRIP (40 mm)
3.0	-----	5-123515-3.0	TA-V STRIP (40 mm)
6.0	402768	5-123515-6.0	TA-V STRIP (40 mm)
9.0	-----	5-123515-9.0	TA-V STRIP (40 mm)

SCHLEUNIGER MEGA STRIP 9650 MACHINE SERIES

TRU-RADIUS STRIP BLADES (28 mm) CLASS: TR-V



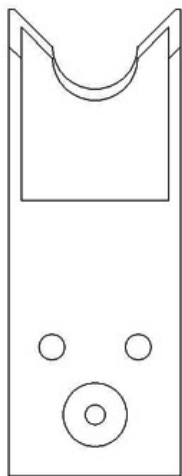
TRU-RADIUS STRIP BLADE

The sharp edge is ground to a half circle whose radius approximates awg wire size. The entry angle lines intersect the half circle at the quadrant points. This type of blade, when closed, presents a true circle profile.

Advantages: This type of blade is excellent for precise and clean jacket removal because it combines the scissor-like shearing action of the by-pass blade with the exact hole profile matching a conductor gauge. Excellent for thin wall cross-link PVC and most rubbery or elastic insulations (thin or thick wall).

Disadvantages: Shut height cannot be modified to process adjacent wire sizes. Off center wire condition has to be considered when choosing blade size.

- TC Coating Available -



5-124871-XX

DIA MM SIZE	ITEM NUMBER	OEM #	DESCRIPTION
2.00	5-124871-2.00	-----	TR-V STRIP (28 MM)
2.50	5-124871-2.50	-----	TR-V STRIP (28MM)
2.80	5-124871-2.80	-----	TR-V STRIP (28 MM)
4.0	5-124871-4.00	-----	TR-V STRIP (28 MM)
4.50	5-124871-4.50	-----	TR-V STRIP (28 MM)
5.0	5-124871-5.00	433919	TR-V STRIP (28 mm)
6.0	5-124871-6.00	433921	TR-V STRIP (28 mm)
7.0	5-124871-7.00	433922	TR-V STRIP (28 mm)
7.5	5-124871-7.50	-----	TR-V STRIP (28 mm)
8.0	5-124871-8.00	433923	TR-V STRIP (28 mm)
8.5	5-124871-8.50	-----	TR-V STRIP (28 mm)
9.0	5-124871-9.00	433925	TR-V STRIP (28 mm)
9.5	5-124871-9.50	-----	TR-V STRIP (28 mm)
10.00	5-124871-10.00	433926	TR-V STRIP (28 mm)

DIA MM SIZE	ITEM NUMBER	OEM #	DESCRIPTION
10.50	5-124871-10.50	-----	TR-V STRIP (28 mm)
11.00	5-124871-11.00	433927	TR-V STRIP (28 mm)
11.50	5-124871-11.50	-----	TR-V STRIP (28 mm)
12.00	5-124871-12.00	433928	TR-V STRIP (28 mm)
12.50	5-124871-12.50	-----	TR-V STRIP (28 mm)
13.00	5-124871-13.00	433929	TR-V STRIP (28 mm)
13.50	5-124871-13.50	-----	TR-V STRIP (28 mm)
14.00	5-124871-14.00	433930	TR-V STRIP (28 mm)
15.00	5-124871-15.00	433931	TR-V STRIP (28 mm)
16.00	5-124871-16.00	433932	TR-V STRIP (28 mm)
17.00	5-124871-17.00	433933	TR-V STRIP (28 mm)
18.00	5-124871-18.00	433934	TR-V STRIP (28 mm)
19.00	5-124871-19.00	433935	TR-V STRIP (28 mm)
20.00	5-124871-20.00	433936	TR-V STRIP (28 mm)

5-124871-XX CONSISTS OF 2 PCS OF 5-124871- XX

• THREE LAKES, WI (715) 546-3070 • **CONTACT LAKES PRECISION** • EL PASO, TX (915) 856-6606 •

• EMAIL: BLADES@LAKESPRECISION.COM •

SCHLEUNIGER MEGA STRIP 9650 MACHINE SERIES

TANGENT ANGLE “V” STRIP BLADES (28 mm) CLASS: TA-V



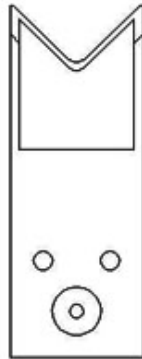
TANGENT RADIUS “V” STRIP BLADES

The sharp edge is ground to an arc whose radius approximates awg wire size. The entry angle lines meet the arc at a tangent point. This type of blade, when closed, presents a diamond shaped edge profile.

Advantages: By adjusting cutter head shut height, (if insulation material and wall thickness allow), you can process adjacent wire extrusions.

Disadvantages: Inadequate for processing thin wall and/or hard insulations such as cross-link or fiberglass jackets.

- TC Coating Available -



5-124888-XX

5-124888 CONSISTS OF 2 PCS

MM SIZE	OEM #	ITEM NUMBER	DESCRIPTION
4.00	433952	5-124888-4.00	TA-V STRIP (28mm)

SCHLEUNIGER MEGA STRIP 9650 MACHINE SERIES

TRU-RADIUS STRIP BLADES (56 mm) CLASS: TR-V

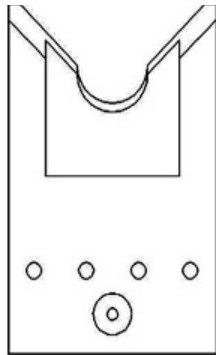
TRU-RADIUS STRIP BLADE

The sharp edge is ground to a half circle whose radius approximates awg wire size. The entry angle lines intersect the half circle at the quadrant points. This type of blade, when closed, presents a true circle profile.

Advantages: This type of blade is excellent for precise and clean jacket removal because it combines the scissor-like shearing action of the by-pass blade with the exact hole profile matching a conductor gauge. Excellent for thin wall cross-link PVC and most rubbery or elastic insulations (thin or thick wall).

Disadvantages: Shut height cannot be modified to process adjacent wire sizes. Off center wire condition has to be considered when choosing blade size.

- TC Coating Available -



5-124889-XX

5-124889 CONSISTS OF 2 PCS

MM SIZE	OEM #	ITEM NUMBER	DESCRIPTION
10.00	-----	5-124889-10.00	TR-V STRIP (56mm)
10.50	-----	5-124889-10.50	TR-V STRIP (56mm)
11.00	-----	5-124889-11.00	TR-V STRIP (56mm)
11.50	-----	5-124889-11.50	TR-V STRIP (56mm)
12.00	-----	5-124889-12.00	TR-V STRIP (56mm)
12.50	-----	5-124889-12.50	TR-V STRIP (56mm)
13.00	-----	5-124889-13.00	TR-V STRIP (56mm)
13.50	-----	5-124889-13.50	TR-V STRIP (56mm)
14.00	-----	5-124889-14.00	TR-V STRIP (56mm)
14.60	-----	5-124889-14.60	TR-V STRIP (56mm)
16.00	-----	5-124889-16.00	TR-V STRIP (56 mm)
19.00	433938	5-124889-19.00	TR-V STRIP (56mm)

• THREE LAKES, WI (715) 546-3070 • **CONTACT LAKES PRECISION** • EL PASO, TX (915) 856-6606 •

• EMAIL: BLADES@LAKESPRECISION.COM •

SCHLEUNIGER MEGA STRIP 9650 MACHINE SERIES

TANGENT ANGLE “V” STRIP BLADES (56 mm) CLASS: TA-V



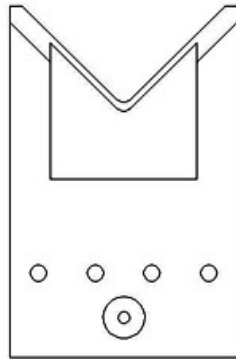
TANGENT RADIUS “V” STRIP BLADES

The sharp edge is ground to an arc whose radius approximates awg wire size. The entry angle lines meet the arc at a tangent point. This type of blade, when closed, presents a diamond shaped edge profile.

Advantages: By adjusting cutter head shut height, (if insulation material and wall thickness allow), you can process adjacent wire extrusions.

Disadvantages: Inadequate for processing thin wall and/or hard insulations such as cross-link or fiberglass jackets.

- TC Coating Available -



5-124887-XX

5-124887 CONSISTS OF 2 PCS

MM SIZE	OEM #	ITEM NUMBER	DESCRIPTION
0.30	-----	5-124887-0.30	TA-V STRIP (56mm)
4.0	433951	5-124887-4.00	TA-V STRIP (56mm)