



LAKES PRECISION^{INC.}

Your Global Source for Wire Processing Perishable Tooling

KM DIGITECH MACHINE SERIES

THIS SECTION CONTAINS BLADES FOR THE FOLLOWING MACHINE SERIES:

□ 104N

□ 702N

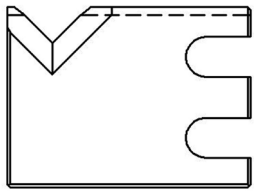
□ 703N

Your Global Source for Wire Processing Perishable Tooling

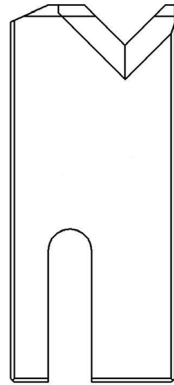
www.lakesprecision.com

KM DIGITECH 104N MACHINE SERIES

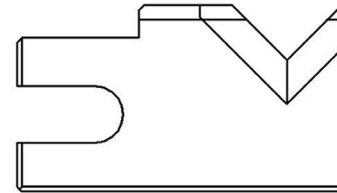
UNIVERSAL CUT / STRIP BLADES



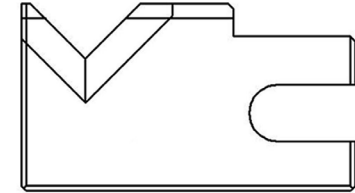
123973
LOWER CUT BLADE



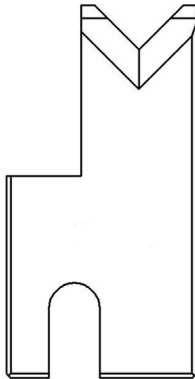
123974
UPPER CUT BLADE



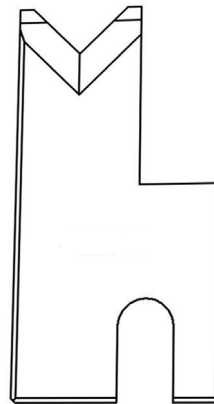
123975
LOWER FRONT STRIP BLADE



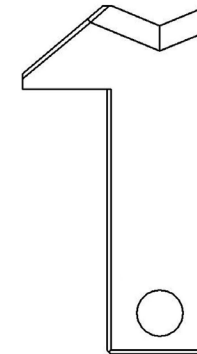
123976
LOWER REAR STRIP BLADE



123977
UPPER FRONT STRIP BLADE



123978
UPPER REAR STRIP BLADE



123979
CUT BLADE

TRU-RADIUS CUT / STRIP BLADE

The sharp edge is ground to a half circle whose radius approximates awg wire size. The entry angle lines intersect the half circle at the quadrant points. This type of blade, when closed, presents a true circle profile.

Advantages: This type of blade is excellent for precise and clean jacket removal because it combines the scissor-like shearing action of the by-pass blade with the exact hole profile matching a conductor gauge. Excellent for thin wall cross-link PVC and most rubbery or elastic insulations (thin or thick wall).

Disadvantages: Shut height cannot be modified to process adjacent wire sizes. Off center wire condition has to be considered when choosing blade size.

- TC Coating Available -



123165

DIA MM SIZE	ITEM NUMBER	DESCRIPTION
0.7	123165-0.7	TR-V CUT / STRIP
0.8	123165-0.8	TR-V CUT / STRIP
0.9	123165-0.9	TR-V CUT / STRIP
1.0	123165-1.0	TR-V CUT / STRIP
1.1	123165-1.1	TR-V CUT / STRIP
1.2	123165-1.2	TR-V CUT / STRIP
1.3	123165-1.3	TR-V CUT / STRIP
1.4	123165-1.4	TR-V CUT / STRIP
1.5	123165-1.5	TR-V CUT / STRIP
1.6	123165-1.6	TR-V CUT / STRIP
1.7	123165-1.7	TR-V CUT / STRIP
1.8	123165-1.8	TR-V CUT / STRIP
1.9	123165-1.9	TR-V CUT / STRIP

DIA MM SIZE	ITEM NUMBER	DESCRIPTION
2.0	123165-2.0	TR-V CUT / STRIP
2.1	123165-2.1	TR-V CUT / STRIP
2.2	123165-2.2	TR-V CUT / STRIP
2.3	123165-2.3	TR-V CUT / STRIP
2.4	123165-2.4	TR-V CUT / STRIP
2.5	123165-2.5	TR-V / CUT STRIP
2.6	123165-2.6	TR-V CUT / STRIP
2.7	123165-2.7	TR-V CUT / STRIP
2.8	123165-2.8	TR-V CUT / STRIP
2.9	123165-2.9	TR-V CUT / STRIP
3.0	123165-3.0	TR-V CUT / STRIP
3.1	123165-3.1	TR-V CUT / STRIP
3.2	123165-3.2	TR-V CUT / STRIP
3.3	123165-3.3	TR-V CUT / STRIP

UNIVERSAL CUT / STRIP BLADES

The sharp edge is ground at an angle that results in a “V” opening of exactly 90 degrees.

Characteristics: 90 degree angle is widely accepted as the best entry angle to use for processing a wide range of wire sizes using the same blade setup. Most of the time, this class of blade incorporates a sharp edge ground to a very small or non-existing radius. It works sufficiently for most of standard wall insulation but is marginal for thin wall, cross-linked PVC, very rubbery insulations, woven fiber or thin-walled multi-conductors.

- TC Coating Available -



123164

ITEM NUMBER	DESCRIPTION
123164	UN-V CUT / STRIP

KM DIGITECH 703N MACHINE SERIES

TRU-RADIUS CUT / STRIP BLADES CLASS: TR-V



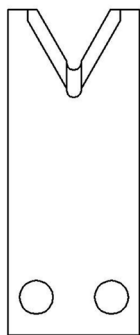
TRU-RADIUS CUT / STRIP BLADES

The sharp edge is ground to a half circle whose radius approximates awg wire size. The entry angle lines intersect the half circle at the quadrant points. This type of blade, when closed, presents a true circle profile.

Advantages: This type of blade is excellent for precise and clean jacket removal because it combines the scissor-like shearing action of the by-pass blade with the exact hole profile matching a conductor gauge. Excellent for thin wall cross-link PVC and most rubbery or elastic insulations (thin or thick wall).

Disadvantages: Shut height cannot be modified to process adjacent wire sizes. Off center wire condition has to be considered when choosing blade size.

- TC Coating Available -



122998-XX

DIA MM SIZE	ITEM NUMBER	DESCRIPTION
0.8	122998-034S	SHORT BLADE
0.8	122998-034L	LONG BLADE
1.0	122998-039S	SHORT BLADE
1.0	122998-039L	LONG BLADE
1.1	122998-042S	SHORT BLADE
1.1	122998-042L	LONG BLADE
1.2	122998-047S	SHORT BLADE
1.2	122998-047L	LONG BLADE
1.4	122998-055S	SHORT BLADE
1.4	122998-055L	LONG BLADE
1.8	122998-067S	SHORT BLADE
1.8	122998-067L	LONG BLADE
2.0	122998-078S	SHORT BLADE
2.0	122998-078L	LONG BLADE
2.2	122998-090S	SHORT BLADE
2.2	122998-090L	LONG BLADE
2.6	122998-102S	SHORT BLADE

DIA MM SIZE	ITEM NUMBER	DESCRIPTION
2.6	122998-102L	LONG BLADE
2.8	122998-112S	SHORT BLADE
2.8	122998-112L	LONG BLADE
3.2	122998-125S	SHORT BLADE
3.2	122998-125L	LONG BLADE
3.6	122998-140S	SHORT BLADE
3.6	122998-140L	LONG BLADE
3.8	122998-152S	SHORT BLADE
3.8	122998-152L	LONG BLADE
4.0	122998-160S	SHORT BLADE
4.0	122998-160L	LONG BLADE
4.4	122998-175S	SHORT BLADE
4.4	122998-175L	LONG BLADE
4.8	122998-190S	SHORT BLADE
4.8	122998-190L	LONG BLADE
5.0	122998-200S	SHORT BLADE
5.0	122998-200L	LONG BLADE

DIA MM SIZE	ITEM NUMBER	DESCRIPTION
5.6	122998-220S	SHORT BLADE
5.6	122998-220L	LONG BLADE
6.0	122998-240S	SHORT BLADE
6.0	122998-240L	LONG BLADE
6.6	122998-260S	SHORT BLADE
6.6	122998-260L	LONG BLADE
7.2	122998-280S	SHORT BLADE
7.2	122998-280L	LONG BLADE
7.6	122998-300S	SHORT BLADE
7.6	122998-300L	LONG BLADE
8.2	122998-320S	SHORT BLADE
8.2	122998-320L	LONG BLADE
8.6	122998-340S	SHORT BLADE
8.6	122998-340L	LONG BLADE
9.2	122998-360S	SHORT BLADE
9.2	122998-360L	LONG BLADE
9.6	122998-380S	SHORT BLADE
9.6	122998-380L	LONG BLADE

• THREE LAKES, WI (715) 546-3070 • CONTACT LAKES PRECISION • EL PASO, TX (915) 856-6606 •

• EMAIL: BLADES@LAKESPRECISION.COM •

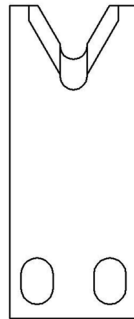
TRU-RADIUS “V” STRIP BLADE

The sharp edge is ground to a half circle whose radius approximates awg wire size. The entry angle lines intersect the half circle at the quadrant points. This type of blade, when closed, presents a true circle profile.

Advantages: This type of blade is excellent for precise and clean jacket removal because it combines the scissor-like shearing action of the by-pass blade with the exact hole profile matching a conductor gauge. Excellent for thin wall cross-link PVC and most rubbery or elastic insulations (thin or thick wall).

Disadvantages: Shut height cannot be modified to process adjacent wire sizes. Off center wire condition has to be considered when choosing blade size.

- TC Coating Available -



123346-X

DIA MM SIZE	ITEM NUMBER	MARK	DESCRIPTION
3.8	123346-150 S	-----	30 DEGREE SHORT TR-V
3.8	123346-150 L	-----	30 DEGREE LONG TR-V

UNIVERSAL CUT / STRIP BLADES

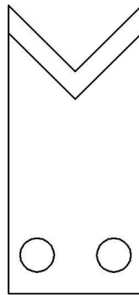
The sharp edge is ground at an angle that results in a “V” opening of exactly 90 degrees.

Characteristics: 90 degree angle is widely accepted as the best entry angle to use for processing a wide range of wire sizes using the same blade setup. Most of the time, this class of blade incorporates a sharp edge ground to a very small or non-existing radius. It works sufficiently for most of standard wall insulation but is marginal for thin wall, cross-linked PVC, very rubbery insulations, woven fiber or thin-walled multi-conductors.

BLADE SET

5-122997 CONSISTS OF: (1) 122997-1 & (1) 122997-2

- TC Coating Available -



5-122997

ITEM NUMBER	MARK	DESCRIPTION
122997-1	-----	SHORT BLADE
122997-2	-----	LONG BLADE
5-122997	-----	UN-V CUT / STRIP