



# LAKES PRECISION<sup>INC.</sup>

*Your Global Source for Wire Processing Perishable Tooling*

## EUBANKS MACHINE SERIES

THIS SECTION CONTAINS BLADES FOR THE FOLLOWING MACHINE SERIES:

□ MACHINE MODELS

□ 4600

□ 4900 / 7400

□ 8000

□ 9800

**Your Global Source for Wire Processing Perishable Tooling**

[www.lakesprecision.com](http://www.lakesprecision.com)

# EUBANKS MACHINE SERIES

COLLINEAR DIE TYPE BLADES CLASS: CL-R



## DIE TYPE BLADES

The die-type blade has a fixed shut height. The cutting edge is precisely drilled to an exact radius dimension for the conductor diameter. The insulation wall is contained in a counter-bore drilled around cutting edge.

This type of blade is the most exactly matched blade to the wire specification, giving a very precise insulation removal. This is excellent for removal of extremely thin insulation walls or where the outer jacket is oval shaped, and is also very useful for processing solid conductor insulated wire. Normally this is the blade of choice for SJT, SVT, SJO, coaxial cable outer jacket removal, and many round multi-conductor wires.

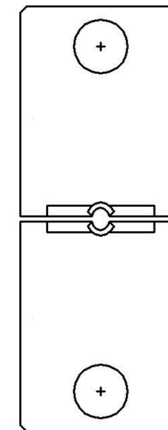
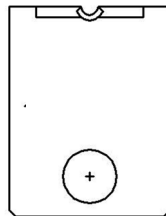
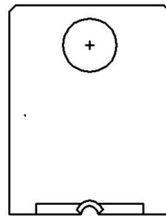
Die blades are manufactured to the exact wire specifications. Blades can be produced for most any wire.

- For a specific blade size or application, contact Lakes Precision, Inc. -

### EUBANKS MACHINE MODELS:

2600 / 2601 , 2650 / 2651 , 2700 / 2701 , 2750 / 2751 , 81A ,  
2800 / 2801 , 2850 / 2851, 842 , 2670 / 2671 , 810A, 87 ,  
2900 / 2901 , 2950 / 2951 , 83 & 83A

*- TC Coating Available -*



122188-XX

## EUBANKS MACHINE SERIES

COLLINEAR DIE TYPE BLADES CLASS: CL-R

**- ADDITIONAL PART NUMBER'S ON SUCCEEDING PAGES -**

# EUBANKS MACHINE SERIES

COLLINEAR DIE TYPE BLADES CLASS: CL-R ADDITIONAL PART NUMBER'S



COND. SIZE	WIRE DIA.	ITEM NUMBER
.012	.016	122188-37
.012	.020	122188-168
.012	.031	122188-169
.013	.020	122188-42
.013	.028	122188-20
.014	.022	122188-43
.016	.032	122188-21
.018	.028	122188-63
.018	.035	122188-19
.019	.028	122188-156
.019	.106	122188-146
.021	.106	122188-147
.022	.040	122188-139
.023	.106	122188-148
.024	.032	122188-80
.024	.041	122188-64
.025	.106	122188-149
.026	.043	122188-84
.026	.104	122188-55
.027	.046	122188-6
.027	.106	122188-150
.028	.036	122188-140

COND. SIZE	WIRE DIA.	ITEM NUMBER
.028	.055	122188-176
.029	.106	122188-151
.031	.046	122188-11
.031	.062	122188-175
.031	.106	122188-152
.033	.049	122188-145
.033	.106	122188-153
.035	.055	122188-81
.035	.106	122188-141
.036	.052	122188-10
.036	.062	122188-114
.038	.078	122188-161
.040	.059	122188-113
.040	.132	122188-52
.042	.101	122188-88
.046	.062	122188-12
.046	.081	122188-8
.046	.110	122188-170
.049	.073	122188-117
.049	.099	122188-7
.050	.082	122188-173
.051	.113	122188-89

COND. SIZE	WIRE DIA.	ITEM NUMBER
.052	.082	12288-174
.052	.136	122188-144
.052	.161	122188-164
.053	.104	122188-54
.055	.070	122188-13
.057	.089	122188-121
.057	.111	122188-67
.059	.082	122188-97
.059	.166	122188-157
.062	.094	122188-3
.063	.081	122188-14
.063	.110	122188-165
.063	.113	122188-119
.067	.106	122188-62
.067	.111	122188-160
.067	.113	122188-171
.067	.125	122188-110
.067	.147	122188-65
.070	.120	122188-5
.070	.125	122188-166
.073	.096	122188-122
.073	.147	122188-45

COND. SIZE	WIRE DIA.	ITEM NUMBER
.078	.104	122188-15
.078	.113	122188-82
.078	.132	122188-111
.078	.140	122188-167
.081	.104	122188-53
.081	.132	122188-66
.082	.125	122188-98
.086	.120	122188-61
.086	.132	122188-51
.086	.152	122188-60
.089	.171	122188-163
.093	.116	122188-123
.096	.140	122188-120
.096	.116	122188-16
.096	.147	122188-68
.096	.156	122188-155
.098	.136	122188-71
.099	.136	122188-128
.101	.136	122188-9
.104	.149	122188-124
.106	.161	122188-162
.106	.196	122188-44

*Additional Part Number's  
Continued on Next Page*

- THREE LAKES, WI ( 715 ) 546-3070 • CONTACT LAKES PRECISION • EL PASO, TX ( 915 ) 856-6606 •
- EMAIL: [BLADES@LAKESPRECISION.COM](mailto:BLADES@LAKESPRECISION.COM) •

# EUBANKS MACHINE SERIES

COLLINEAR DIE TYPE BLADES CLASS: CL-R ADDITIONAL PART NUMBER'S



COND. SIZE	WIRE DIA.	ITEM NUMBER
.110	.171	122188-59
.113	.136	122188-133
.113	.155	122188-2
.116	.144	122188-41
.116	.154	122188-104
.116	.157	122188-103
.133	.162	122188-56
.120	.140	122188-17
.120	.166	122188-154
.120	.191	122188-172
.128	.182	122188-99
.128	.218	122188-102
.132	.166	122188-118
.132	.191	122188-69
.136	.161	122188-105
.144	.204	122188-18
.144	.218	122188-94
.149	.257	122188-38
.152	.196	122188-143
.156	.242	122188-137
.157	.199	122188-74
.157	.257	122188-39

COND. SIZE	WIRE DIA.	ITEM NUMBER
.161	.234	122188-126
.161	.202	122188-34
.166	.196	122188-106
.166	.242	122188-22
.166	.261	122188-100
.169	.221	122188-125
.171	.238	122188-58
.177	.236	122188-142
.177	.254	122188-30
.177	.368	122188-135
.180	.234	122188-23
.187	.238	122188-73
.187	.257	122188-40
.187	.265	122188-24
.189	.312	122188-136
.189	.246	122188-158
.192	.290	122188-70
.193	.302	122188-95
.199	.242	122188-159
.199	.281	122188-129
.203	.272	122188-131
.203	.302	122188-107

COND. SIZE	WIRE DIA.	ITEM NUMBER
.209	.281	122188-49
.209	.339	122188-138
.213	.302	122188-90
.213	.316	122188-57
.214	.285	122188-33
.218	.302	122188-115
.221	.312	122188-91
.221	.358	122188-101
.224	.290	122188-25
.225	.322	122188-35
.228	.312	122188-116
.228	.323	122188-93
.234	.295	122188-46
.234	.307	122188-96
.234	.359	122188-48
.238	.312	122188-85
.242	.287	122188-78
.242	.312	122188-4
.246	.277	122188-47
.246	.332	122188-92
.250	.290	122188-72
.250	.302	122188-86

COND. SIZE	WIRE DIA.	ITEM NUMBER
.250	.312	122188-83
.257	.316	12288-132
.257	.323	122188-26
.261	.312	122188-50
.266	.332	122188-109
.277	.316	122188-76
.277	.348	122188-27
.277	.375	122188-112
.296	.348	122188-127
.299	.368	122188-1
.299	.453	122188-29
.300	.423	122188-36
.307	.386	122188-28
.312	.397	122188-87
.323	.386	122188-108
.323	.421	122188-130
.328	.404	122188-134
.339	.413	122188-31
.348	.421	122188-32
.368	.421	122188-75
.368	.500	122188-79
.404	.468	122188-77

# EUBANKS MACHINE SERIES

COLLINEAR RADIUS STRIP BLADES CLASS: CL-R

## COLLINEAR RADIUS TYPE

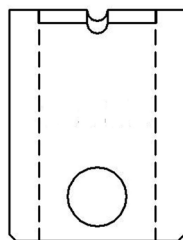
The sharp edge is ground to a half circle whose radius approximates awg wire size. Shearing edge is ground to a straight edge. This type of blade, when closed to shut height, forms a perfect circle profile.

**Advantages:** This type of blade is excellent for precise and clean jacket removal because it exactly matches conductor gauge. Excellent for thin-wall cross-link PVC and most applications where precise jacket removal around the conductor is required, especially with layered coverings such as fiber over plastic, plastic over shields, etc.

**Disadvantages:** Shut height cannot be modified to process adjacent wire sizes. Off-center wire condition has to be considered when choosing blade size.

- USE WITH WIRE GUIDES 122193-XX -

- TC Coating Available -



122192-XX

DIA MM SIZE	ITEM NUMBER
0.4	122192-97
0.5	122192-47
0.6	122192-48
0.7	122192-1
0.8	122192-2
0.9	122192-3
1.0	122192-4
1.1	122192-5
1.2	122192-6
1.3	122192-7
1.4	122192-8
1.5	122192-9
1.6	122192-10
1.7	122192-11

DIA MM SIZE	ITEM NUMBER
1.8	122192-12
1.9	122192-13
2.0	122192-14
2.1	122192-15
2.2	122192-16
2.3	122192-17
2.4	122192-18
2.5	122192-19
2.6	122192-20
2.7	122192-21
2.8	122192-22
2.9	122192-23
3.0	122192-24
3.1	122192-25

## EUBANKS MACHINE SERIES

COLLINEAR RADIUS STRIP BLADES CLASS: CL-R

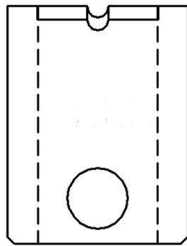
- ADDITIONAL PART NUMBER'S ON SUCCEEDING PAGE -

• THREE LAKES, WI ( 715 ) 546-3070 • CONTACT LAKES PRECISION • EL PASO, TX ( 915 ) 856-6606 •

• EMAIL: [BLADES@LAKESPRECISION.COM](mailto:BLADES@LAKESPRECISION.COM) •

# EUBANKS MACHINE SERIES

COLLINEAR RADIUS STRIP BLADES CLASS: CL-R ADDITIONAL PART NUMBER'S



**122192-XX**

**EUBANKS MACHINE MODELS:**

2600 / 2601 , 2650 / 2651 , 2700 / 2701  
 2750 / 2751 , 81A , 2800 / 2801 , 2850 ,  
 2851 , 842 , 2670 / 2671 , 810A, 87 , 2900 /  
 2901 , 2950 / 2951 , 83 & 83A

DIA MM SIZE	ITEM NUMBER
3.2	122192-26
3.3	122192-27
3.4	122192-28
3.5	122192-29
3.6	122192-30
3.7	122192-31
3.8	122192-32
3.9	122192-33
4.0	122192-34
4.1	122192-35
4.2	122192-36
4.3	122192-37
4.4	122192-38
4.5	122192-39
4.6	122192-40
4.7	122192-41
4.8	122192-42
4.9	122192-43
5.0	122192-50
5.1	122192-51
5.2	122192-52
5.3	122192-44
5.4	122192-53
5.5	122192-54

DIA MM SIZE	ITEM NUMBER
5.6	122192-55
5.7	122192-56
5.8	122192-57
5.9	122192-58
6.0	122192-45
6.1	122192-59
6.2	122192-60
6.3	122192-61
6.4	122192-62
6.5	122192-63
6.6	122192-46
6.7	122192-66
6.8	122192-67
6.9	122192-68
7.0	122192-69
7.1	122192-70
7.2	122192-71
7.3	122192-72
7.4	122192-73
7.5	122192-49
7.5	122192-74
7.6	122192-75
7.7	122192-76
7.8	122192-77

DIA MM SIZE	ITEM NUMBER
7.9	122192-78
8.0	122192-79
8.1	122192-80
8.2	122192-81
8.3	122192-82
8.4	122192-83
8.5	122192-84
8.6	122192-85
8.7	122192-86
8.8	122192-87
8.9	122192-88
9.0	122192-89
9.1	122192-90
9.2	122192-91
9.3	122192-92
9.4	122192-93
9.5	122192-94
9.6	122192-95
9.7	122192-96
9.8	122192-99
9.9	122192-98
10.6	122192-101
10.7	122192-100

• THREE LAKES, WI ( 715 ) 546-3070 • **CONTACT LAKES PRECISION** • EL PASO, TX ( 915 ) 856-6606 •  
 • EMAIL: [BLADES@LAKESPRECISION.COM](mailto:BLADES@LAKESPRECISION.COM) •

# EUBANKS MACHINE SERIES

## COLLINEAR DIE TYPE BLADES



### DIE TYPE BLADES

The die-type blade has a fixed shut height. The cutting edge is precisely drilled to an exact radius dimension for the conductor diameter. The insulation wall is contained in a counter-bore drilled around cutting edge.

This type of blade is the most exactly matched blade to the wire specification, giving a very precise insulation removal. This is excellent for removal of extremely thin insulation walls or where the outer jacket is oval shaped, and is also very useful for processing solid conductor insulated wire. Normally this is the blade of choice for *SJT*, *SVT*, *SJO*, coaxial cable outer jacket removal, and many round multi-conductor wires.

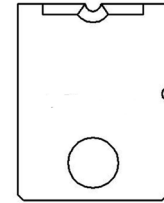
Die blades are manufactured to the exact wire specifications. Blades can be produced for most any wire.

- For a specific blade size or application, contact Lakes Precision, Inc. -

#### EUBANKS MACHINE MODELS:

2600 / 2601 , 2650 / 2651 , 2700 / 2701, 2750 / 2751 , 81A  
2800 / 2801 , 2850 / 2851, 842 , 2670 / 2671 , 810A, 87  
2900 / 2901, 2950 / 2951 , 83 & 83A

- *TC Coating Available* -



122419-XX

# EUBANKS MACHINE SERIES

## COLLINEAR 2 CONDUCTOR DIE TYPE BLADES CLASS: CL-R

The die-type blade has a fixed shut height. The cutting edge is precisely drilled to an exact radius dimension for the conductor diameter. The insulation wall is contained in a counter-bore drilled around cutting edge.

This type of blade is the most exactly matched blade to the wire specification, giving a very precise insulation removal. This is excellent for removal of extremely thin insulation walls or where the outer jacket is oval shaped, and is also very useful for processing solid conductor insulated wire. Normally this is the blade of choice for *SJT*, *SVT*, *SJO*, coaxial cable outer jacket removal, and many round multi-conductor wires.

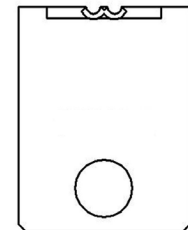
Die blades are manufactured to the exact wire specifications. Blades can be produced for most any wire.

- For a specific blade size or application, contact Lakes Precision, Inc. -

#### EUBANKS MACHINE MODELS:

2600 / 2601 , 2650 / 2651 , 2700 / 2701, 2750 / 2751 , 81A  
2800 / 2801 , 2850 / 2851, 842 , 2670 / 2671 , 810A, 87  
2900 / 2901, 2950 / 2951 , 83 & 83A

- *TC Coating Available* -



122480-XX

• *THREE LAKES, WI ( 715 ) 546-3070* • **CONTACT LAKES PRECISION** • *EL PASO, TX ( 915 ) 856-6606* •

• *EMAIL: BLADES@LAKESPRECISION.COM* •

# EUBANKS MACHINE SERIES

COLLINEAR CUT-OFF BLADES CLASS: CL-A

## COLLINEAR ANGLE CUT-OFF BLADES

Sharp edge is ground to a collinear angle.

Characteristics: Sharp edges cut by compression. This class of blade was designed to allow positive control of cutter head closure. It also allows precision processing of specific wire sizes with an inherent blade longevity.

This type of blade is used with collinear radius strip blades.

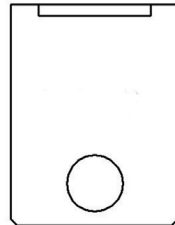
### EUBANKS MACHINE MODELS:

2600 / 2601, 2650 / 2651, 2700 / 2701 / 2750 / 2751, 81A ,

2800 / 2801, 2850 / 2851 / 842 / 2670 / 2671 / 810A, 87 /

2900, 2901 / 2950 / 2951, 83 & 83A

- *TC Coating Available* -



122187

ITEM NUMBER	DESCRIPTION	OEM#	CLASS
122187	COLLINEAR CUT-OFF	00169	CL-A



# EUBANKS MACHINE SERIES

COLLINEAR ANGLE CUT-OFF BLADES CLASS: CL-A



## COLLINEAR ANGLE CUT-OFF BLADES

Sharp edge is ground to a collinear angle.

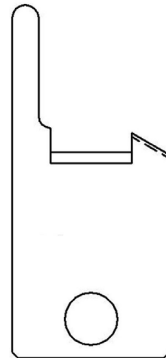
Sharp edges cut by shearing action. These type of blades by-pass allowing more adjustment in the cutterhead closure, for more versatility.

This class of blade is most often used for multi-conductor flat or oval wire.

### EUBANKS MACHINE MODELS:

2600 / 2601, 2650 / 2651, 2700 / 2701, 2750 / 2751,  
81A, / 2800 / 2801, 2850 / 2851 / 842, 2670 / 2671, 810A,  
87 / 2900 / 2901, 2950 / 2951 / 83 & 83A

*- TC Coating Available -*



**122189**

ITEM NUMBER	DESCRIPTION	CLASS
122189	COLLINEAR CUT-OFF	CL-A

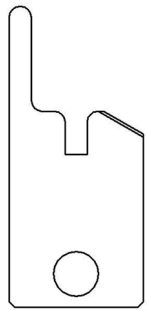
### WIRE GUIDES

Wire guides are used in conjunction with collinear radius strip blades to precisely guide the conductor into the strip area of the blade. This will help prevent the conductor from coming in contact with the cutting edges of the strip blades, preventing premature strip blade wear.

#### Choosing the correct part number

When choosing the correct size, the guide diameter chosen should be 0.00 mm to 0.1 mm larger than the measured insulation diameter.

Example;        122191-1                    =            1.0 mm Diameter Guide



**122191-XX**

#### EUBANKS MACHINE MODELS:

2600 / 2601 , 2650 / 2651 , 2700 / 2701 2750 / 2751  
 81A , 2800 / 2801 , 2850 / 2851 842 , 2670 / 2671 ,  
 810A , 87 , 2900 / 2901 2950 / 2951 , 83 & 83A

WIRE GUIDE SIZE	ITEM NUMBER
0.25	122191-105
0.4	122191-104
0.5	122191-110
0.74	122191-109
0.81	122191-108
1.0	122191-1
1.1	122191-2
1.2	122191-3
1.3	122191-4
1.4	122191-5
1.5	122191-6
1.6	122191-7
1.7	122191-8
1.8	122191-9
1.9	122191-10
2.0	122191-11
2.05	122191-106

WIRE GUIDE SIZE	ITEM NUMBER
2.1	122191-12
2.2	122191-13
2.3	122191-14
2.4	122191-15
2.5	122191-16
2.6	122191-17
2.7	122191-18
2.8	122191-19
2.9	122191-20
3.0	122191-21
3.1	122191-22
3.2	122191-23
3.3	122191-24
3.4	122191-25
3.5	122191-26
3.6	122191-27
3.7	122191-28

## EUBANKS MACHINE SERIES

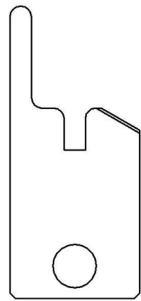
### WIRE GUIDES

**- ADDITIONAL PART NUMBER'S ON SUCCEEDING PAGE -**

- THREE LAKES, WI ( 715 ) 546-3070 • **CONTACT LAKES PRECISION** • EL PASO, TX ( 915 ) 856-6606 •
- EMAIL: [BLADES@LAKESPRECISION.COM](mailto:BLADES@LAKESPRECISION.COM) •

# EUBANKS MACHINE SERIES

WIRE GUIDES ADDITIONAL PART NUMBER'S



**122191-XX**

**EUBANKS MACHINE MODELS:**

2600 / 2601 , 2650 / 2651 , 2700 / 2701 2750 / 2751  
 81A , 2800 / 2801 , 2850 / 2851 842 , 2670 / 2671 ,  
 810A , 87 , 2900 / 2901 2950 / 2951 , 83 & 83A

WIRE GUIDE SIZE	ITEM NUMBER
3.8	122191-29
3.9	122191-30
4.0	122191-31
4.1	122191-32
4.2	122191-33
4.3	122191-34
4.4	122191-35
4.5	122191-36
4.6	122191-37
4.7	122191-38
4.8	122191-39
4.9	122191-40
5.0	122191-41
5.1	122191-42
5.2	122191-43
5.3	122191-44
5.4	122191-45
5.5	122191-46
5.6	122191-47
5.7	122191-48
5.8	122191-49
5.9	122191-50
6.0	122191-51
6.1	122191-52
6.2	122191-53
6.3	122191-54

WIRE GUIDE SIZE	ITEM NUMBER
6.4	122191-55
6.5	122191-56
6.6	122191-67
6.7	122191-68
6.8	122191-69
6.9	122191-70
7.0	122191-71
7.1	122191-72
7.2	122191-73
7.3	122191-61
7.4	122191-74
7.5	122191-75
7.6	122191-76
7.7	122191-77
7.8	122191-78
7.9	122191-58
8.0	122191-79
8.1	122191-80
8.2	122191-81
8.3	122191-82
8.4	122191-83
8.5	122191-62
8.6	122191-84
8.7	122191-85
8.8	122191-57
8.9	122191-86

WIRE GUIDE SIZE	ITEM NUMBER
9.0	122191-64
9.1	122191-87
9.2	122191-88
9.63	122191-89
9.35	122191-60
9.5	122191-90
9.6	122191-91
9.7	122191-92
9.8	122191-93
9.9	122191-94
10.0	122191-65
10.1	122191-95
10.2	122191-96
10.3	122191-97
10.4	122191-59
10.5	122191-98
10.6	122191-99
10.7	122191-100
10.8	122191-101
10.9	122191-103
11.0	122191-103
11.5	122191-66
12.0	122191-63
12.7	122191-107
12.9	122191-111

### WIRE GUIDES

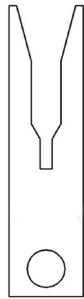
Wire guides are used in conjunction with collinear radius strip blades to precisely guide the conductor into the strip area of the blade. This will help prevent the conductor from coming in contact with the cutting edges of the strip blades, preventing premature strip blade wear.

USE WITH 122192 - XX STRIP BLADES -

### Choosing the correct part number

When choosing the correct size, the guide diameter chosen should be 0.00 mm to 0.1 mm larger than the measured insulation diameter.

Example;        122193-1        =        1.0 mm Diameter Guide



**122193**

#### EUBANKS MACHINE MODELS:

2600 / 2601 , 2650 / 2651 , 2700 / 2701 2750 / 2751  
 81A , 2800 / 2801 , 2850 / 2851 842 , 2670 / 2671 ,  
 810A , 87 , 2900 / 2901 2950 / 2951 , 83 & 83A

WIRE GUIDE SIZE	ITEM NUMBER
0.7	122193-57
1.0	122193-1
1.1	122193-2
1.2	122193-3
1.3	122193-4
1.4	122193-5
1.5	122193-6
1.6	122193-7
1.7	122193-8
1.8	122193-9
1.9	122193-10
2.0	122193-11
2.1	122193-12
2.2	122193-13
2.3	122193-14
2.4	122193-15
2.5	122193-16
2.6	122193-17
2.7	122193-18

WIRE GUIDE SIZE	ITEM NUMBER
2.8	122193-19
2.9	122193-20
3.0	122193-21
3.1	122193-22
3.2	122193-23
3.3	122193-24
3.4	122193-25
3.5	122193-26
3.6	122193-27
3.7	122193-28
3.8	122193-29
3.9	122193-30
4.0	122193-31
4.1	122193-32
4.2	122193-33
4.3	122193-34
4.4	122193-35
4.5	122193-36
4.6	122193-37

WIRE GUIDE SIZE	ITEM NUMBER
4.7	122193-38
4.8	122193-39
4.9	122193-40
5.0	122193-41
5.1	122193-42
5.2	122193-43
5.3	122193-44
5.4	122193-45
5.5	122193-46
5.6	122193-47
5.7	122193-48
5.8	122193-49
5.9	122193-50
6.0	122193-51
6.1	122193-52
6.2	122193-53
6.3	122193-54
6.4	122193-55
6.5	122193-56

### UNIVERSAL STRIP BLADES

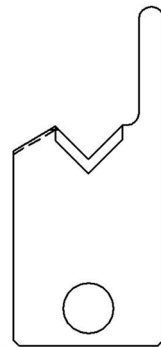
The sharp edge is ground at an angle that results in a “V” opening of exactly 90 degrees.

Characteristics: 90 degree angle is widely accepted as the best entry angle to use for processing a wide range of wire sizes using the same blade setup. Most of the time, this class of blade incorporates a sharp edge ground to a very small or non-existing radius. It works sufficiently for most of standard wall insulation but is marginal for thin wall, cross-linked PVC, very rubbery insulations, woven fiber or thin-walled multi-conductors.

#### EUBANKS MACHINE MODELS:

2600 / 2601 , 2650 / 2651 , 2700 / 2701 / 2750 / 2751 , 81A , 2800 /  
2801 , 2850 / 2851 / 842 , 2670 / 2671 , 810A, 87 , 2900 / 2901,  
2950 / 2951 , 83 & 83A

- TC Coating Available -



122198

ITEM NUMBER	DESCRIPTION	OEM#	CLASS
122198	UNIVERSAL STRIP	00154	UN-V

### UNIVERSAL CUT-OFF BLADES

The sharp edge is ground to a radius size. The entry angle lines meet the radius at a tangent point. This type of blade, when closed, presents a diamond shaped edge profile.

**Characteristics:** Sharp edges cut by slicing, creating a gradual cut. This produces less deformation of the material being cut. Cutting edges must be able to by-pass each other. This type cut-off is best used with circular shaped wire.

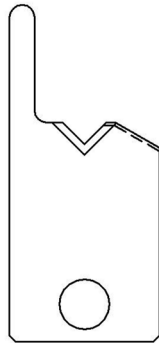
#### EUBANKS MACHINE MODELS:

2600 / 2601, 2650 / 2651, 2700 / 2701, 2750 / 2751, 81A, 2800 / 2801,

2850 / 2851, 842, 2670 / 2671, 810A, 87, 2900 / 2901,

2950 / 2951, 83 & 83A

- TC Coating Available -



122190-XX

GAUGE	ITEM NUMBER	OEM#	CLASS
12-20	122190-1	00157	UN-V
22-28	122190-2	00158	UN-V
30-32	122190-3	00159	UN-V

# EUBANKS MACHINE SERIES

TANGENT RADIUS “V” STRIP BLADES CLASS: TA-V

## TANGENT ANGLE “V” STRIP BLADES

The sharp edge is ground to an arc whose radius approximates awg wire size. The entry angle lines meet the arc at a tangent point. This type of blade, when closed, presents a diamond shaped edge profile.

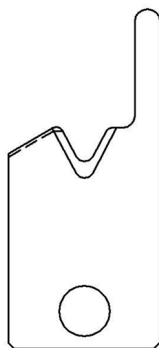
**Advantages:** By adjusting cutter head shut height, ( if insulation material and wall thickness allow ), you can process adjacent wire extrusions.

**Disadvantages:** Inadequate for processing thin wall and/or hard insulations such as cross-link or fiberglass jackets.

### EUBANKS MACHINE MODELS:

2600 / 2601 , 2650 / 2651 , 2700 / 2701  
 2750 / 2751 , 81A , 2800 / 2801 , 2850 / 2851  
 842 , 2670 / 2671 , 810A, 87 , 2900 / 2901  
 2950 / 2951 , 83 & 83A

*- TC Coating Available -*



**122197-XX**

OEM #  
00155

AWG GAUGE	ITEM NUMBER	DESCRIPTION
30 - 32	122197-1	TA-V STRIP
26 - 28	122197-2	TA-V STRIP
22 - 24	122197-3	TA-V STRIP
20	122197-4	TA-V STRIP
18	122197-5	TA-V STRIP
16	122197-6	TA-V STRIP

AWG GAUGE	ITEM NUMBER	DESCRIPTION
14	122197-7	TA-V STRIP
12	122197-8	TA-V STRIP
10	122197-9	TA-V STRIP
8	122197-10	TA-V STRIP
2	122197-11	TA-V STRIP
1	122197-12	TA-V STRIP
4	122197-13	TA-V STRIP

# EUBANKS MACHINE SERIES

CUT-OFF BLADES CLASS: WE-A



## WIDE ENTRY ANGLE

The sharp edge is ground at an angle that results in a “V” opening above 90 degrees.

Characteristics: Wide angle is not as effective for gathering wire towards the operating radius. This type works well for gathering thick, soft insulations, ( such as ignition wire ).

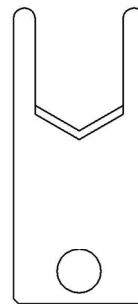
EUBANKS MACHINE MODELS:

2600 / 2601, 2650 / 2651, 2700 / 2701, 2750 / 2751, 81A  
, 2800 / 2801, 2850 / 2851, 842, 2670 / 2671, 810A, 87 ,  
2900 / 2901, 2950 / 2951, 83 & 83A

- TC Coating Available -

GAUGE	.030 THICKNESS ITEM NUMBER	OEM #	ENTRY ANLGE
12-20	122482-1	-----	123 DEGREE
22-28	122482-2	-----	123 DEGREE
30-32	122482-3	-----	123 DEGREE

GAUGE	.062 THICKNESS ITEM NUMBER	OEM #	ENTRY ANGLE
12-20	122482-4	02238	123 DEGREE
22-28	122482-5	-----	123 DEGREE
30-32	122482-6	-----	123 DEGREE



122482-XX

- THREE LAKES, WI ( 715 ) 546-3070 • CONTACT LAKES PRECISION • EL PASO, TX ( 915 ) 856-6606 •
- EMAIL: [BLADES@LAKESPRECISION.COM](mailto:BLADES@LAKESPRECISION.COM) •



### TRU-RADIUS STRIP BLADE

The sharp edge is ground to a half circle whose radius approximates awg wire size. The entry angle lines intersect the half circle at the quadrant points. This type of blade, when closed, presents a true circle profile.

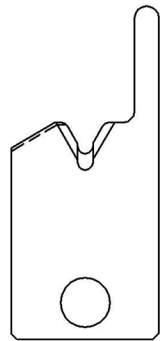
**Advantages:** This type of blade is excellent for precise and clean jacket removal because it combines the scissor-like shearing action of the by-pass blade with the exact hole profile matching a conductor gauge. Excellent for thin wall cross-link PVC and most rubbery or elastic insulations ( thin or thick wall ).

**Disadvantages:** Shut height cannot be modified to process adjacent wire sizes. Off center wire condition has to be considered when choosing blade size.

#### EUBANKS MACHINE MODELS:

2600 / 2601 , 2650 / 2651 , 2700 / 2701  
 2750 / 2751 , 81A , 2800 / 2801 , 2850 / 2851  
 842 , 2670 / 2671 , 810A, 87 , 2900 / 2901  
 2950 / 2951 , 83 & 83A

- TC Coating Available -



122196-XX

DIA SIZE	ITEM NUMBER	DESCRIPTION
.032	122196-16	TR-V STRIP
.039	122196-1	TR-V STRIP
.047	122196-2	TR-V STRIP
.055	122196-3	TR-V STRIP
.067	122196-4	TR-V STRIP
.078	122196-5	TR-V STRIP
.09	122196-6	TR-V STRIP
.102	122196-7	TR-V STRIP
.112	122196-8	TR-V STRIP
.125	122196-9	TR-V STRIP

DIA SIZE	ITEM NUMBER	DESCRIPTION
.140	122196-10	TR-V STRIP
.152	122196-11	TR-V STRIP
.160	122196-12	TR-V STRIP
.175	122196-13	TR-V STRIP
.200	122196-14	TR-V STRIP
.220	122196-15	TR-V STRIP
.290	122196-19	TR-V STRIP
..350	122196-18	TR-V STRIP
.420	122196-17	TR-V STRIP

### SPECIAL APPLICATION BLADES

Lakes Precision, Inc. also provides blades for special applications.

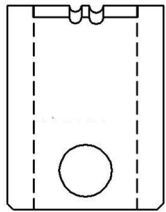
A few examples are shown here.

For blades to meet your specific application, please contact Lakes Precision, Inc.

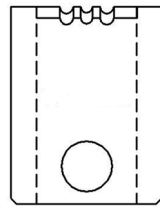
#### EUBANKS MACHINE MODELS:

2600 / 2601, 2650 / 2651, 2700 / 2701, 2750 / 2751, 81A, 2800 / 2801, 2850 / 2851, 842, 2670 / 2671, 810A, 87, 2900 / 2901, 2950 / 2951, 83 & 83A

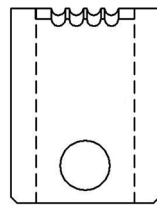
*- TC Coating Available / Wire Samples Required -*



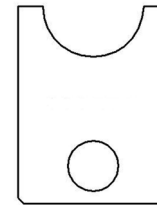
**2 CONDUCTOR  
STRIP BLADE  
122371-XX**



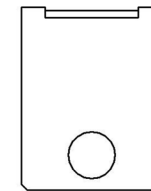
**3 CONDUCTOR  
STRIP BLADE  
122208-XX**



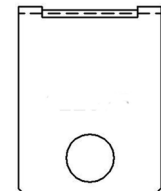
**4 CONDUCTOR  
STRIP BLADE  
122322-XX**



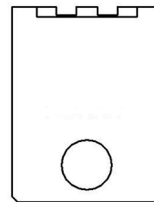
**ASSEMBLY STOPS  
122372-XX**



**STRAIGHT EDGE  
STRIP BLADE  
123173-XX**



**STRAIGHT EDGE  
RIBBON STRIPPER  
122373-XX**



**NOTCHED  
BUTT-STYLE CUT-OFF  
122387-XX**

# EUBANKS 4600 MACHINE SERIES

COLLINEAR ANGLE CUT-OFF BLADES CLASS: CL-A



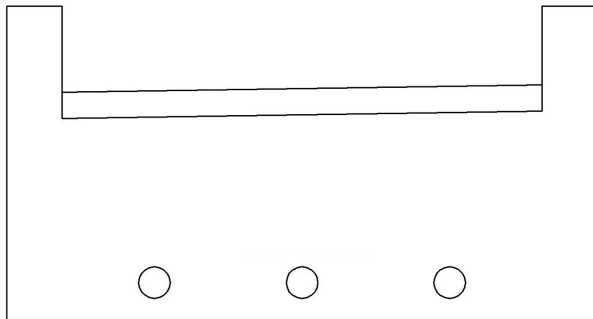
## COLLINEAR ANGLE CUT-OFF BLADE

Sharp edge is ground to a collinear angle.

Sharp edges cut by shearing action. These type of blades by-pass allowing more adjustment in the cutterhead closure, for more versatility.

This class of blade is most often used for multi-conductor flat or oval wire.

*- TC Coating Available -*



122396

ITEM NUMBER	DESCRIPTION	CLASS
122396	COLLINEAR ANGLE CUT-OFF	CL-A

# EUBANKS 4900 / 7400 MACHINE SERIES

UNIVERSAL CUT / STRIP BLADES CLASS: UN-V

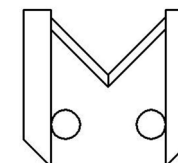
## UNIVERSAL CUT / STRIP BLADES

The sharp edge is ground at an angle that results in a “V” opening of exactly 90 degrees.

Characteristics: 90 degree angle is widely accepted as the best entry angle to use for processing a wide range of wire sizes using the same blade setup. Most of the time, this class of blade incorporates a sharp edge ground to a very small or non-existing radius. It works sufficiently for most of standard wall insulation but is marginal for thin wall, cross-linked PVC, very rubbery insulations, woven fiber or thin-walled multi-conductors.

- TC Coating Available -

OEM #	ITEM NUMBER	DESCRIPTION	CLASS
14216 & 14217	122497	UNIVERSAL CUT / STRIP	UN-V



122497

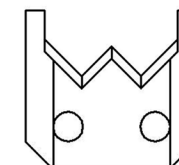
## UNIVERSAL CUT / STRIP BLADES 2V

The sharp edge is ground at an angle that results in a “V” opening of exactly 90 degrees.

Characteristics: 90 degree angle is widely accepted as the best entry angle to use for processing a wide range of wire sizes using the same blade setup. Most of the time, this class of blade incorporates a sharp edge ground to a very small or non-existing radius. It works sufficiently for most of standard wall insulation but is marginal for thin wall, cross-linked PVC, very rubbery insulations, woven fiber or thin-walled multi-conductors.

- TC Coating Available -

OEM #	ITEM NUMBER	DESCRIPTION	CLASS
14463 & 14464	122825	2V CUT / STRIP	UN-V



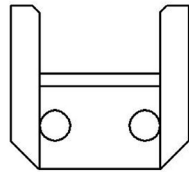
122825

### COLLINEAR ANGLE CUT-OFF BLADES

Sharp edge is ground to a flat collinear angle.

Characteristics: Sharp edges cut by shearing action. This class of blade was designed to allow multiple conductor wire to be processed without deforming the wire. The main advantage of this class is the ability to process many different wire gauges with the same blades.

- TC Coating Available -



123234

ITEM NUMBER	OEM #	DESCRIPTION
123234	14863	CL-A CUT / STRIP BLADE

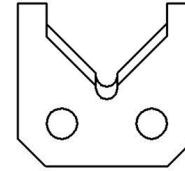
### SPECIAL APPLICATION BLADES

Lakes Precision, Inc. also provides blades for special applications.

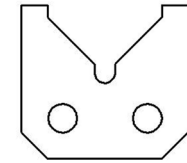
A few examples are shown here.

For blades to meet your specific application, please contact Lakes Precision, Inc.

*- TC Coating Available / Wire Samples Required -*



**TRU-RADIUS  
STRIP BLADE  
122713**



**RADIUS WIRE  
GUIDE PLATE  
122714**

**- THESE BLADES ARE USED WITH THE EUBANKS 4900 & 7400 MODELS -**

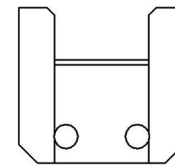
### SPECIAL APPLICATION BLADES

Lakes Precision, Inc. also provides blades for special applications.

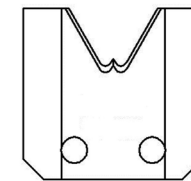
A few examples are shown here.

For blades to meet your specific application, please contact Lakes Precision, Inc.

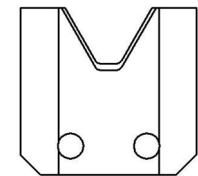
*- TC Coating Available / Wire Samples Required -*



**MULTI-CONDUCTOR  
CUT-OFF  
122822-XX**



**2V TA-V  
STRIP BLADE  
122486-XX**



**OVAL  
STRIP BLADE  
122869-XX**

**- THESE BLADES ARE USED WITH THE EUBANKS 8000 MODEL -**

# EUBANKS 8000 MACHINE SERIES

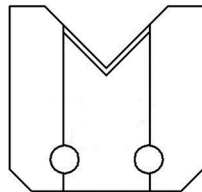
UNIVERSAL CUT / STRIP BLADES CLASS: UN-V

## UNIVERSAL CUT / STRIP BLADES

The sharp edge is ground at an angle that results in a “V” opening of exactly 90 degrees.

Characteristics: 90 degree angle is widely accepted as the best entry angle to use for processing a wide range of wire sizes using the same blade setup. Most of the time, this class of blade incorporates a sharp edge ground to a very small or non-existing radius. It works sufficiently for most of standard wall insulation but is marginal for thin wall, cross-linked PVC, very rubbery insulations, woven fiber or thin-walled multi-conductors.

- TC Coating Available -



122483-XX

OEM #	ITEM NUMBER	GAUGE	SHUT HEIGHT	CUTTING EDGE
14252	122483-3 STRIP	12 / 30	WITH / RELIEF	25 DEGREE
14248	122483-4 STRIP	4 / 12	WITH / RELIEF	25 DEGREE
14251	122483-1 CUT	12 / 30	WITH / RELIEF	35 DEGREE
14247	122483-2 CUT	4 / 12	WITH / RELIEF	35 DEGREE
14517-01	122483-5 CUT	6 / 30	WITHOUT RELIEF	35 DEGREE
14515-01	122483-6 CUT	2 / 4	WITHOUT RELIEF	35 DEGREE
-----	122483-7 STRIP	12 / 30	WITHOUT RELIEF	25 DEGREE
-----	122483-8 STRIP	4 / 12	WITHOUT RELIEF	25 DEGREE

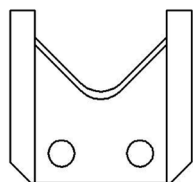
### TANGENT RADIUS “V” STRIP BLADES

The sharp edge is ground to an arc whose radius approximates awg wire size. The entry angle lines meet the arc at a tangent point. This type of blade, when closed, presents a diamond shaped edge profile.

**Advantages:** By adjusting cutter head shut height, ( if insulation material and wall thickness allow ), you can process adjacent wire extrusions.

**Disadvantages:** Inadequate for processing thin wall and / or hard insulations such as cross-link or fiberglass jackets.

- TC Coating Available -



122489-XX

DIAMM SIZE	ITEM NUMBER
0.7	122489-1
0.8	122489-2
0.9	122489-3
1.0	122489-4
1.1	122489-5
1.2	122489-6
1.3	122489-7
1.4	122489-8
1.5	122489-9
1.6	122489-10
1.7	122489-11
1.8	122489-12
1.9	122489-13
2.0	122489-14
2.1	122489-15
2.2	122489-16
2.3	122489-17
2.4	122489-18
2.5	122489-19
2.6	122489-20
2.7	122489-21

DIAMM SIZE	ITEM NUMBER
2.8	122489-22
2.9	122489-23
3.0	122489-24
3.1	122489-25
3.2	122489-26
3.3	122489-27
3.4	122489-28
3.5	122489-29
3.6	122489-30
3.7	122489-31
3.8	122489-32
3.9	122489-33
4.0	122489-34
4.1	122489-35
4.2	122489-36
4.3	122489-37
4.4	122489-38
4.5	122489-39
4.6	122489-40
4.7	122489-41
4.8	122489-42

DIAMM SIZE	ITEM NUMBER
4.9	122489-43
5.0	122489-44
5.1	122489-45
5.2	122489-46
5.3	122489-47
5.4	122489-48
5.5	122489-49
5.6	122489-50
5.7	122489-51
5.8	122489-52
5.9	122489-53
6.0	122489-54
6.1	122489-55
6.2	122489-56
6.3	122489-57
6.4	122489-58
6.5	122489-59
6.6	122489-60
6.7	122489-61
6.8	122489-62
6.9	122489-63

DIAMM SIZE	ITEM NUMBER
7.0	122489-64
7.1	122489-65
7.2	122489-66
7.3	122489-67
7.4	122489-68
7.5	122489-69
7.6	122489-70
7.7	122489-71
7.8	122489-72
7.9	122489-73
8.0	122489-74
8.1	122489-75
8.2	122489-76
8.3	122489-77
8.4	122489-78
8.5	122489-79
8.6	122489-80
8.7	122489-81
9.1	122489-82



# EUBANKS 8000 MACHINE SERIES

TRU-RADIUS “V” BLADES CLASS: TR-V



## TRU-RADIUS STRIP BLADE (.030 THICK)

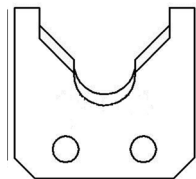
The sharp edge is ground to a half circle whose radius approximates awg wire size. The entry angle lines intersect the half circle at the quadrant points. This type of blade, when closed, presents a true circle profile.

**Advantages:** This type of blade is excellent for precise and clean jacket removal because it combines the scissor-like shearing action of the by-pass blade with the exact hole profile matching a conductor gauge. Excellent for thin wall cross-link PVC and most rubbery or elastic insulations ( thin or thick wall ).

**Disadvantages:** Shut height cannot be modified to process adjacent wire sizes. Off center wire condition has to be considered when choosing blade size.

- USE WITH WIRE GUIDE PLATE 122717-XX -

- TC Coating Available -



122484

DIA MM SIZE	ITEM NUMBER
0.5	122484-82
0.6	122484-83
0.7	122484-1
0.74	122484-84
0.8	122484-2
0.9	122484-3
1.0	122484-4
1.1	122484-5
1.2	122484-6
1.3	122484-7
1.4	122484-8
1.5	122484-9
1.6	122484-10
1.7	122484-11
1.8	122484-12
1.9	122484-13
2.0	122484-14
2.1	122484-15
2.2	122484-16
2.3	122484-17
2.4	122484-18

DIA MM SIZE	ITEM NUMBER
2.5	122484-19
2.6	122484-20
2.7	122484-21
2.8	122484-22
2.9	122484-23
3.0	122484-24
3.1	122484-25
3.2	122484-26
3.3	122484-27
3.4	122484-28
3.5	122484-29
3.6	122484-30
3.7	122484-31
3.8	122484-32
3.9	122484-33
4.0	122484-34
4.1	122484-35
4.2	122484-36
4.3	122484-37
4.4	122484-38
4.5	122484-39

DIA MM SIZE	ITEM NUMBER
4.6	122484-40
4.7	122484-41
4.8	122484-42
4.9	122484-43
5.0	122484-44
5.1	122484-45
5.2	122484-46
5.3	122484-47
5.4	122484-48
5.5	122484-49
5.6	122484-50
5.7	122484-51
5.8	122484-52
5.9	122484-53
6.0	122484-54
6.1	122484-55
6.2	122484-56
6.3	122484-57
6.4	122484-58
6.5	122484-59
6.6	122484-60

DIA MM SIZE	ITEM NUMBER
6.7	122484-61
6.8	122484-62
6.9	122484-63
7.0	122484-64
7.1	122484-65
7.2	122484-66
7.3	122484-67
7.4	122484-68
7.5	122484-69
7.6	122484-70
7.7	122484-71
7.8	122484-72
7.9	122484-73
8.0	122484-74
8.1	122484-75
8.2	122484-76
8.3	122484-77
8.4	122484-78
8.5	122484-79
8.6	122484-80
8.7	122484-81

• THREE LAKES, WI ( 715 ) 546-3070 • CONTACT LAKES PRECISION • EL PASO, TX ( 915 ) 856-6606 •

• EMAIL: [BLADES@LAKESPRECISION.COM](mailto:BLADES@LAKESPRECISION.COM) •

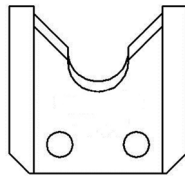
### TRU-RADIUS STRIP BLADE WITH SLOT

The sharp edge is ground to a half circle whose radius approximates awg wire size. The entry angle lines intersect the half circle at the quadrant points. This type of blade, when closed, presents a true circle profile.

**Advantages:** This type of blade is excellent for precise and clean jacket removal because it combines the scissor-like shearing action of the by-pass blade with the exact hole profile matching a conductor gauge. Excellent for thin wall cross-link PVC and most rubbery or elastic insulations ( thin or thick wall ).

**Disadvantages:** Shut height cannot be modified to process adjacent wire sizes. Off center wire condition has to be considered when choosing blade size.

- TC Coating Available -



**122485**

OEM #

14320-01

DIA MM SIZE	ITEM NUMBER	DIA MM SIZE	ITEM NUMBER	DIA MM SIZE	ITEM NUMBER	DIA MM SIZE	ITEM NUMBER
0.6	122485-83	2.57	122485-19	4.6	122485-40	6.8	122485-62
0.7	122485-1	2.6	122485-20	4.7	122485-41	6.9	122485-63
0.8	122485-2	2.7	122485-21	4.8	122485-42	7.0	122485-64
0.9	122485-3	2.8	122485-22	4.9	122485-43	7.1	122485-65
1.0	122485-4	2.9	122485-23	5.0	122485-44	7.2	122485-66
1.1	122485-5	3.0	122485-24	5.1	122485-45	7.3	122485-67
1.2	122485-6	3.1	122485-25	5.2	122485-46	7.4	122485-68
1.3	122485-7	3.2	122485-26	5.3	122485-47	7.5	122485-69
1.4	122485-8	3.3	122485-27	5.4	122485-48	7.6	122485-70
1.5	122485-9	3.4	122485-28	5.5	122485-49	7.7	122485-71
1.6	122485-10	3.5	122485-29	5.6	122485-50	7.8	122485-72
1.7	122485-11	3.6	122485-30	5.7	122485-51	7.9	122485-73
1.8	122485-12	3.7	122485-31	5.8	122485-52	8.0	122485-74
1.9	122485-13	3.8	122485-32	5.9	122485-53	8.1	122485-75
2.0	122485-84	3.9	122485-33	6.0	122485-54	8.2	122485-76
2.06	122485-14	4.0	122485-34	6.1	122485-55	8.3	122485-77
2.1	122485-15	4.1	122485-35	6.2	122485-56	8.4	122485-78
2.2	122485-16	4.2	122485-36	6.3	122485-57	8.5	122485-79
2.3	122485-17	4.3	122485-37	6.4	122485-58	8.6	122485-80
2.4	122485-18	4.4	122485-38	6.5	122485-59	8.7	122485-81
2.5	122485-85	4.5	122485-39	6.6	122485-60	8.9	122485-82
				6.7	122485-61	9.0	122485-86

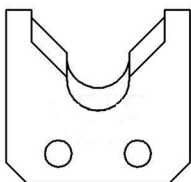
### TRU-RADIUS STRIP BLADE WITHOUT SLOT

The sharp edge is ground to a half circle whose radius approximates awg wire size. The entry angle lines intersect the half circle at the quadrant points. This type of blade, when closed, presents a true circle profile.

**Advantages:** This type of blade is excellent for precise and clean jacket removal because it combines the scissor-like shearing action of the by-pass blade with the exact hole profile matching a conductor gauge. Excellent for thin wall cross-link PVC and most rubbery or elastic insulations ( thin or thick wall ).

**Disadvantages:** Shut height cannot be modified to process adjacent wire sizes. Off center wire condition has to be considered when choosing blade size.

- TC Coating Available -



**122487**

OEM #  
14992-01

DIA MM SIZE	ITEM NUMBER
0.40	122487-84
0.71	122487-1
0.80	122487-2
0.89	122487-3
0.99	122487-4
1.10	122487-5
1.20	122487-6
1.30	122487-7
1.40	122487-8
1.50	122487-9
1.60	122487-10
1.70	122487-11
1.80	122487-12
1.90	122487-13
2.06	122487-14
2.11	122487-15
2.21	122487-16
2.30	122487-17
2.39	122487-18
2.49	122487-85
2.57	122487-19

2.60	122487-20
2.70	122487-21
2.80	122487-22
2.90	122487-23
2.97	122487-24
3.10	122487-25
3.20	122487-26
3.30	122487-27
3.40	122487-28
3.51	122487-29
3.60	122487-30
3.70	122487-31
3.80	122487-32
3.90	122487-33
4.01	122487-34
4.10	122487-35
4.20	122487-36
4.32	122487-37
4.42	122487-38
4.50	122487-39
4.60	122487-40
4.72	122487-41

4.80	122487-42
4.88	122487-43
5.00	122487-44
5.10	122487-45
5.20	122487-46
5.28	122487-47
5.40	122487-48
5.50	122487-49
5.60	122487-50
5.70	122487-51
5.80	122487-52
5.90	122487-53
5.99	122487-54
6.10	122487-55
6.20	122487-56
6.30	122487-57
6.40	122487-58
6.50	122487-59
6.60	122487-60
6.70	122487-61
6.80	122487-62
6.90	122487-63

7.00	122487-64
7.10	122487-65
7.20	122487-66
7.30	122487-67
7.40	122487-68
7.50	122487-69
7.60	122487-70
7.70	122487-71
7.78	122487-72
7.90	122487-73
8.00	122487-74
8.10	122487-75
8.20	122487-76
8.30	122487-77
8.40	122487-78
8.50	122487-79
8.60	122487-80
8.70	122487-81
9.91	122487-82
10.10	122487-83

• THREE LAKES, WI ( 715 ) 546-3070 • CONTACT LAKES PRECISION • EL PASO, TX ( 915 ) 856-6606 •

• EMAIL: [BLADES@LAKESPRECISION.COM](mailto:BLADES@LAKESPRECISION.COM) •

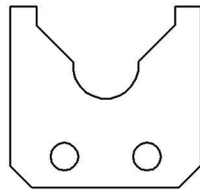
### RADIUS WIRE GUIDE PLATE

Wire guides are used in conjunction with collinear radius strip blades to precisely guide the conductor into the strip area of the blade. This will help prevent the conductor from coming in contact with the cutting edges of the strip blades, preventing premature strip blade wear.

#### Choosing the correct part number

When choosing the correct size, the guide diameter chosen should be 0.00 mm to 0.1 mm larger than the measured insulation diameter.

- USE WITH 122484-XX STRIP BLADES -



**122717-XX**

WIRE GUIDE SIZE	ITEM NUMBER
0.79	122717-031
0.81	122717-032
0.84	122717-033
0.97	122717-038
0.99	122717-039
1.14	122717-045
1.22	122717-048
1.27	122717-050
1.55	122717-061
2.67	122717-105
2.79	122717-110
2.90	122717-114

WIRE GUIDE SIZE	ITEM NUMBER
3.00	122717-118
3.56	122717-140
4.95	122717-195
6.17	122717-243
6.20	122717-244
6.35	122717-250
6.53	122717-257
6.96	122717-274
7.26	122717-286
7.47	122717-294
8.00	122717-315
8.94	122717-352

# EUBANKS 9800 MACHINE SERIES

UNIVERSAL STRIP BLADES CLASS: UN-V

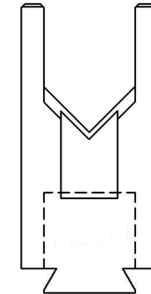
## UNIVERSAL STRIP BLADES

The sharp edge is ground at an angle that results in a “V” opening of exactly 90 degrees.

Characteristics: 90 degree angle is widely accepted as the best entry angle to use for processing a wide range of wire sizes using the same blade setup. Most of the time, this class of blade incorporates a sharp edge ground to a very small or non-existing radius. It works sufficiently for most of standard wall insulation but is marginal for thin wall, cross-linked PVC, very rubbery insulations, woven fiber or thin-walled multi-conductors.

- TC Coating Available -

OEM #	ITEM NUMBER	DESCRIPTION	CLASS
12686	122233	UNIVERSAL STRIP WITH RELIEF	UN-V



122233

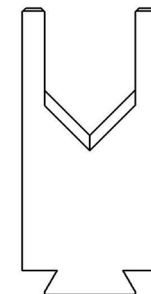
## UNIVERSAL STRIP BLADES

The sharp edge is ground at an angle that results in a “V” opening of exactly 90 degrees.

Characteristics: 90 degree angle is widely accepted as the best entry angle to use for processing a wide range of wire sizes using the same blade setup. Most of the time, this class of blade incorporates a sharp edge ground to a very small or non-existing radius. It works sufficiently for most of standard wall insulation but is marginal for thin wall, cross-linked PVC, very rubbery insulations, woven fiber or thin-walled multi-conductors.

- TC Coating Available -

OEM #	ITEM NUMBER	DESCRIPTION	CLASS
14103	122883	UNIVERSAL STRIP WITHOUT RELIEF	UN-V



122883

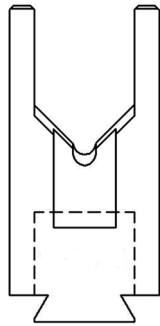
### TRU-RADIUS STRIP BLADE WITH RELIEF

The sharp edge is ground to a half circle whose radius approximates awg wire size. The entry angle lines intersect the half circle at the quadrant points. This type of blade, when closed, presents a true circle profile.

**Advantages:** This type of blade is excellent for precise and clean jacket removal because it combines the scissor-like shearing action of the by-pass blade with the exact hole profile matching a conductor gauge. Excellent for thin wall cross-link PVC and most rubbery or elastic insulations ( thin or thick wall ).

**Disadvantages:** Shut height cannot be modified to process adjacent wire sizes. Off center wire condition has to be considered when choosing blade size.

- TC Coating Available -



122451

DIA MM SIZE	ITEM NUMBER	DESCRIPTION
0.5	122451-21	TR-V STRIP
1.0	122451-6	TR-V STRIP
1.1	122451-7	TR-V STRIP
1.2	122451-8	TR-V STRIP
1.3	122451-9	TR-V STRIP
1.4	122451-10	TR-V STRIP
1.5	122451-11	TR-V STRIP
1.6	122451-12	TR-V STRIP
1.7	122451-13	TR-V STRIP
1.8	122451-14	TR-V STRIP
1.9	122451-15	TR-V STRIP
2.0	122451-16	TR-V STRIP
2.1	122451-17	TR-V STRIP

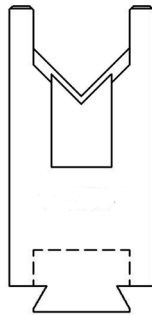
DIA MM SIZE	ITEM NUMBER	DESCRIPTION
2.2	122451-18	TR-V STRIP
2.3	122451-19	TR-V STRIP
2.4	122451-20	TR-V STRIP
2.6	122451-2	TR-V STRIP
3.0	122451-1	TR-V STRIP
3.2	122451-22	TR-V STRIP
3.3	122451-3	TR-V STRIP
3.6	122451-25	TR-V STRIP
4.1	122451-5	TR-V STRIP
4.6	122451-4	TR-V STRIP
5.3	122451-23	TR-V STRIP
7.7	122451-24	TR-V STRIP

### UNIVERSAL CUT-OFF BLADES

The sharp edge is ground to a radius size. The entry angle lines meet the radius at a tangent point. This type of blade, when closed, presents a diamond shaped edge profile.

Characteristics: Sharp edges cut by slicing, creating a gradual cut. This produces less deformation of the material being cut. Cutting edges must be able to by-pass each other. This type cut-off is best used with circular shaped wire.

- *TC Coating Available* -



122234

OEM #	ITEM NUMBER	DESCRIPTION	CLASS
12685	122234	UN-V CUT-OFF WITH RELIEF	UN-V