



LAKES PRECISION^{INC.}

Your Global Source for Wire Processing Perishable Tooling

ERASER MACHINE SERIES

THIS SECTION CONTAINS BLADES FOR THE FOLLOWING MACHINE SERIES:

□ HCA 10

□ LS10 / U.K. CS 2000

□ WC-500

Your Global Source for Wire Processing Perishable Tooling

www.lakesprecision.com

ERASER HCA 10 MACHINE SERIES

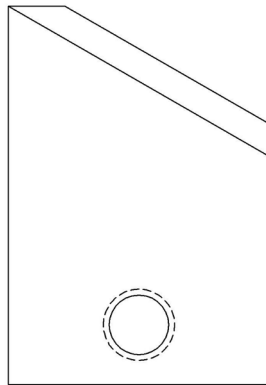
CUT-OFF BLADES CLASS: CL-A

CUT-OFF BLADES

Sharp edge is ground to a flat collinear angle.

Characteristics: Sharp edges cut by shearing action. This class of blade was designed to allow multiple conductor wire to be processed without deforming the wire. The main advantage of this class is the ability to process many different wire gauges with the same blades.

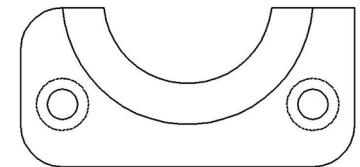
- TC Coating Available -



123132
UPPER BLADE

ITEM NUMBER	DESCRIPTION	OEM #
123132	MOVABLE UPPER CUT-OFF	IR5258
123133	STATIONARY LOWER CUT-OFF	IR8743

123132 / 123133
CUT-OFF BLADES



123133
LOWER BLADE

DIE TYPE BLADES

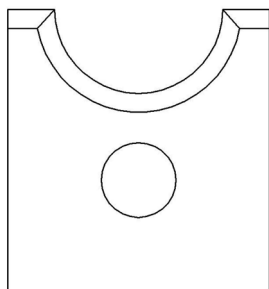
The die-type blade has a fixed shut height. The cutting edge is precisely drilled to an exact radius dimension for the conductor diameter. The insulation wall is contained in a counter-bore drilled around cutting edge.

This type of blade is the most exactly matched blade to the wire specification, giving a very precise insulation removal. This is excellent for removal of extremely thin insulation walls or where the outer jacket is oval shaped, and is also very useful for processing solid conductor insulated wire. Normally this is the blade of choice for SJT, SVT, SJO, coaxial cable outer jacket removal, and many round multi-conductor wires.

Die blades are manufactured to the exact wire specifications. Blades can be produced for most any wire.

- For a specific blade size or application, contact Lakes Precision, Inc. -

- *TC Coating Available* -



122355

ITEM NUMBER	OEM #	DESCRIPTION
122355-1	IR1707	2.0 DIAMETER
122355-2	IR1708	2.7 DIAMETER
122355-3	IR1709	3.3 DIAMETER
122355-4	IR1710	3.7 DIAMETER
122355-25	-----	4.6 DIAMETER
122355-5	IR1711	4.8 DIAMETER
122355-6	IR1712	5.4 DIAMETER
122355-24	-----	6.0 DIAMETER
122355-7	IR1713	6.2 DIAMETER
122355-22	-----	6.6 DIAMETER
122355-23	-----	7.0 DIAMETER
122355-8	IR1714	7.4 DIAMETER
122355-9	IR1715	8.5 DIAMETER
122355-26	-----	8.8 DIAMETER
122355-10	IR1716	9.5 DIAMETER

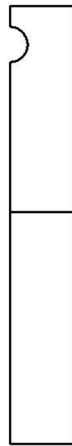
ITEM NUMBER	OEM #	DESCRIPTION
122355-27	-----	9.8 DIAMETER
122355-11	IR1717	10.7 DIAMETER
122355-28	-----	11.0 DIAMETER`
122355-12	IR1718	11.5 DIAMETER
122355-29	-----	11.8 DIAMETER
122355-13	IR1719	12.7 DIAMETER
122355-14	IR1720	14.3 DIAMETER
122355-15	IR1721	15.9 DIAMETER
122355-16	IR1722	18.3 DIAMETER
122355-17	IR1723	20.2 DIAMETER
122355-18	IR1724	22.2 DIAMETER
122355-19	IR1725	24.2 DIAMETER
122355-20	IR1726	26.2 DIAMETER
122355-21	IR1727	28.5 DIAMETER
122355-30	-----	20.1 DIAMETER
122355-31	-----	30.1 DIAMETER

CUT BLADE

Sharp edge is ground to a flat collinear angle.

Characteristics: Sharp edges cut by shearing action. This class of blade was designed to allow multiple conductor wire to be processed without deforming the wire. The main advantage of this class is the ability to process many different wire gauges with the same blades.

- TC Coating Available -



122446

ITEM NUMBER	MARK	DESCRIPTION
122446	-----	WC-500 CUT