



# LAKES PRECISION<sup>INC.</sup>

*Your Global Source for Wire Processing Perishable Tooling*

## **EMBOAVA MACHINE SERIES**

*THIS SECTION CONTAINS BLADES FOR THE EMBOAVA MACHINE SERIES*

**Your Global Source for Wire Processing Perishable Tooling**

[www.lakesprecision.com](http://www.lakesprecision.com)

### TRU-RADIUS STRIP BLADE

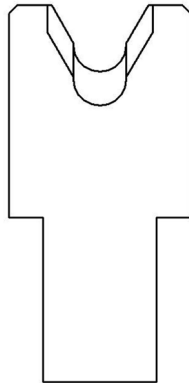
The sharp edge is ground to a half circle whose radius approximates awg wire size.

The entry angle lines intersect the half circle at the quadrant points. This type of blade, when closed, presents a true circle profile.

**Advantages:** This type of blade is excellent for precise and clean jacket removal because it combines the scissor-like shearing action of the by-pass blade with the exact hole profile matching a conductor gauge. Excellent for thin wall cross-link PVC and most rubbery or elastic insulations ( thin or thick wall ).

**Disadvantages:** Shut height cannot be modified to process adjacent wire sizes. Off center wire condition has to be considered when choosing blade size.

- TC Coating Available -



**123750-XX**

DIA MM SIZE	ITEM NUMBER	DESCRIPTION
3.5	123750-3.5	TR-V STRIP
5.3	123750-5.3	TR-V STRIP
6.3	123750-6.3	TR-V STRIP
6.8	123750-6.8	TR-V STRIP