



LAKES PRECISION^{INC.}

Your Global Source for Wire Processing Perishable Tooling

CARPENTER MACHINE SERIES

THIS SECTION CONTAINS BLADES FOR THE FOLLOWING MACHINE SERIES:

- 47C
- 72A-S
- 72B
- M-77
- M93 / M97 / M98 / M99

Your Global Source for Wire Processing Perishable Tooling

www.lakesprecision.com

CARPENTER 47C MACHINE SERIES

FLAT CABLE STRIP BLADES

FLAT CABLE STRIP BLADES

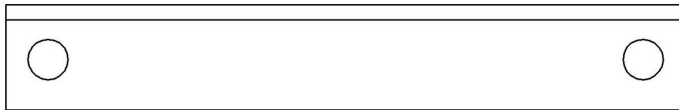
Lakes Precision, Inc. also provides blades for special applications.

An example is shown here.

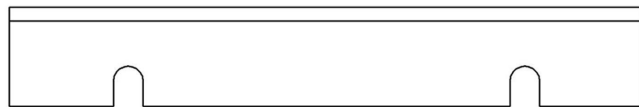
For blades to meet your specific application, please contact Lakes Precision, Inc.

- TC Coating Available -

ONE PAIR CONSISTS OF 122779 & 122904



122779
CABLE STRIPPER



122904
CABLE STRIPPER

ITEM NUMBER	OEM#	DESCRIPTION
122779	3049X	FLAT CABLE STRIPPER
122904	2955X	FLAT CABLE STRIPPER

CARPENTER 72A-S MACHINE SERIES

COLLINEAR ANGLE CUT-OFF BLADES CLASS: CL-A

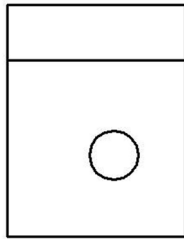
COLLINEAR ANGLE CUT-OFF BLADES

Sharp edge is ground to a flat collinear angle.

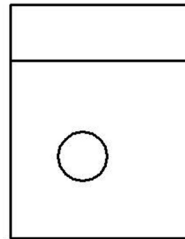
Characteristics: Sharp edges cut by shearing action. This class of blade was designed to allow multiple conductor wire to be processed without deforming the wire. The main advantage of this class is the ability to process many different wire gauges with the same blades.

122686 & 122687 = PAIR

- *TC Coating Available* -



**122686
RIGHT BLADE**



**122687
LEFT BLADE**

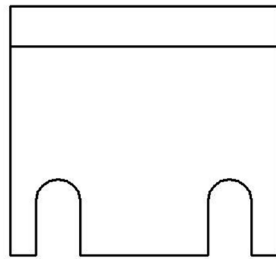
ITEM NUMBER	OEM #	DESCRIPTION
122686	7168RX	RIGHT CUT-OFF
122687	7168LX	LEFT CUT-OFF

COLLINEAR ANGLE ROTARY STRIP BLADES

Sharp edge is ground to a flat collinear angle.

Characteristics: Sharp edges cut by shearing action. This class of blade was designed to allow multiple conductor wire to be processed without deforming the wire. The main advantage of this class is the ability to process many different wire gauges with the same blades.

- *TC Coating Available* -



122682-XX

ITEM NUMBER	MATERIAL	DESCRIPTION
122682-1	M2 TOOL STEEL	CL-A CUT-OFF
122682-2	A2 TOOL STEEL	CL-A CUT-OFF
122682-3	TUNGSTEN CARBIDE	CL-A CUT-OFF

CARPENTER M-77 MACHINE SERIES

COLLINEAR RADIUS TYPE CLASS: CL-R



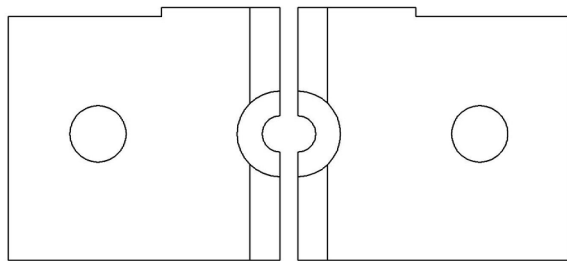
COLLINEAR RADIUS TYPE

The sharp edge is ground to a half circle whose radius approximates awg wire size. Shearing edge is ground to a straight edge. This type of blade, when closed to shut height, forms a perfect circle profile.

Advantages: This type of blade is excellent for precise and clean jacket removal because it exactly matches conductor gauge. Excellent for thin-wall cross-link PVC and most applications where precise jacket removal around the conductor is required, especially with layered coverings such as fiber over plastic, plastic over shields, etc.

Disadvantages: Shut height cannot be modified to process adjacent wire sizes. Off-center wire condition has to be considered when choosing blade size.

- TC Coating Available -



5-123868-X

DIA MM SIZE	ITEM NUMBER
.000	5-123868-20
4.29	5-123868-19
4.08	5-123868-1
5.79	5-123868-2
6.35	5-123868-3
7.36	5-123868-4
8.43	5-123868-5
8.83	5-123868-6
9.34	5-123868-7
10.69	5-123868-8

DIA MM SIZE	ITEM NUMBER
11.50	5-123868-9
11.88	5-123868-10
12.70	5-123868-11
13.46	5-123868-12
14.22	5-123868-13
15.08	5-123868-18
15.87	5-123868-14
17.78	5-123868-15
20.32	5-123868-16
22.35	5-123868-17

• THREE LAKES, WI (715) 546-3070 • CONTACT LAKES PRECISION • EL PASO, TX (915) 856-6606 •

• EMAIL: BLADES@LAKESPRECISION.COM •

TANGENT RADIUS “V” CUT / STRIP BLADES

The sharp edge is ground to an arc whose radius approximates awg wire size. The entry angle lines meet the arc at a tangent point. This type of blade, when closed, presents a diamond shaped edge profile.

Advantages: By adjusting cutter head shut height, (if insulation material and wall thickness allow), you can process adjacent wire sizes with the same blade, or you could compensate for off-center wire extrusions.

Disadvantages: Inadequate for processing thin wall and/or hard insulations such as cross-link or fiberglass jackets.

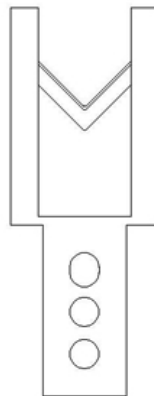
- TC Coating Available -

CARBIDE

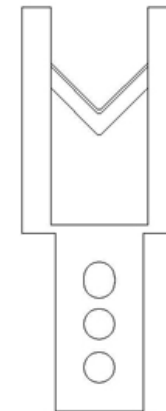
DIA MM SIZE	ITEM NUMBER	MATERIAL	DESCRIPTION
0.5	123267-1	CARBIDE	TA-V CUT / STRIP
1.3	123267-2	CARBIDE	TA-V CUT / STRIP
2.4	123267-4	CARBIDE	TA-V CUT / STRIP
8.9	123267-3	CARBIDE	TA-V CUT / STRIP

TOOL STEEL

DIA MM SIZE	ITEM NUMBER	MATERIAL	DESCRIPTION
.25	123762-010	TOOL STEEL	TA-V CUT / STRIP
0.5	123762-018	TOOL STEEL	TA-V CUT / STRIP
1.3	123762-052	TOOL STEEL	TA-V CUT / STRIP
2.4	123762-096	TOOL STEEL	TA-V CUT / STRIP
8.12	123762-320	TOOL STEEL	TA-V CUT / STRIP
8.9	123762-350	TOOL STEEL	TA-V CUT / STRIP



123267-X



123762-X

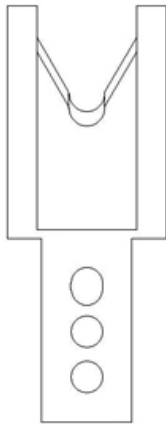
TRU-RADIUS STRIP BLADE

The sharp edge is ground to a half circle whose radius approximates awg wire size. The entry angle lines intersect the half circle at the quadrant points. This type of blade, when closed, presents a true circle profile.

Advantages: This type of blade is excellent for precise and clean jacket removal because it combines the scissor-like shearing action of the by-pass blade with the exact hole profile matching a conductor gauge. Excellent for thin wall cross-link PVC and most rubbery or elastic insulations (thin or thick wall).

Disadvantages: Shut height cannot be modified to process adjacent wire sizes. Off center wire condition has to be considered when choosing blade size.

- TC Coating Available -



123567

DIA MM SIZE	ITEM NUMBER
0.40	123567-016
0.50	123567-020
0.60	123567-024
0.65	123567-026
0.71	123567-028
0.86	123567-034
0.91	123567-036
0.99	123567-039
1.09	123567-043
1.19	123567-047
1.40	123567-055
1.52	123567-060
1.70	123567-067
1.83	123567-072
1.98	123567-078

DIA MM SIZE	ITEM NUMBER
2.16	123567-085
2.29	123567-090
2.44	123567-096
2.59	123567-102
2.84	123567-112
3.05	123567-120
3.18	123567-125
3.30	123567-130
3.56	123567-140
3.86	123567-152
4.06	123567-160
4.19	123567-165
4.37	123567-172
4.45	123567-175
4.70	123567-185

DIA MM SIZE	ITEM NUMBER
4.83	123567-190
5.08	123567-200
5.21	123567-205
533	123567-210
5.59	123567-220
5.72	123567-225
5.84	123567-230
6.10	123567-240
6.35	123567-250
6.60	123567-260
6.86	123567-270
7.11	123567-280
7.37	123567-290
7.62	123567-300
8.13	123567-320
8.38	123567-330

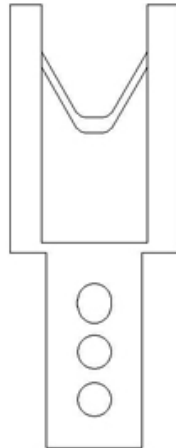
TANGENT RADIUS “V” OVAL STRIP BLADE

Lakes Precision, Inc. also provides blades for special applications.

An example is shown here.

For blades to meet your specific application, please contact Lakes Precision, Inc.

- TC Coating Available -



123560-X

DIA MM SIZE	CENTER TO CENTER MM	ITEM NUMBER	DESCRIPTION
0.5	0.7	123560-5	OVAL CUT / STRIP
0.8	3.1	123560-17	OVAL CUT / STRIP
1.1	2.8	123560-11	OVAL CUT / STRIP
1.1	4.8	123560-16	OVAL CUT / STRIP
1.1	6.7	123560-14	OVAL CUT / STRIP
1.2	8.6	123560-18	OVAL CUT / STRIP
1.4	2.4	123560-9	OVAL CUT / STRIP
1.6	1.4	123560-7	OVAL CUT / STRIP
1.7	1.4	123560-12	OVAL CUT / STRIP
1.7	1.6	123560-13	OVAL CUT / STRIP
2.3	2.2	123560-6	OVAL CUT / STRIP
2.7	2.7	123560-1	OVAL CUT / STRIP
2.9	2.8	123560-3	OVAL CUT / STRIP
3.0	2.9	123560-15	OVAL CUT / STRIP
3.2	3.2	123560-2	OVAL CUT / STRIP
3.8	3.5	123560-10	OVAL CUT / STRIP
4.1	3.2	123560-8	OVAL CUT / STRIP
4.1	4.0	123560-4	OVAL CUT / STRIP

CARPENTER M97 / M98 / M99 MACHINE SERIES

TANGENT RADIUS “V” STRIP BLADES CLASS: TA-V



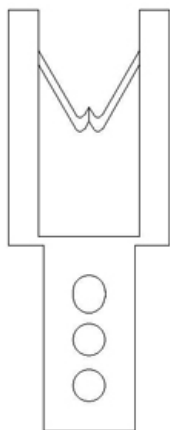
TANGENT RADIUS “V” STRIP BLADE

The sharp edge is ground tangent to an arc whose radius approximates awg wire size. The entry angle lines meet the arc at a tangent point. This type of blade, when closed, presents a diamond shaped edge profile.

Advantages: By adjusting cutter head shut height, (if insulation material and wall thickness allow), you can process adjacent wire extrusions.

Disadvantages: Inadequate for processing thin wall and/or hard insulations such as cross-link or fiberglass jackets.

- TC Coating Available -



123799-X

ITEM NUMBER	DESCRIPTION	CLASS
123799-1	2V-052-096 STRIP	TA-V STRIP BLADE
123799-2	2V-034-075 STRIP	TA-V STRIP BLADE
123799-3	2V-022-067 STRIP	TA-V STRIP BLADE
123799-4	2V-096-191 STRIP	TA-V STRIP BLADE
123799-5	2V-076-191 STRIP	TA-V STRIP BLADE
123799-6	2V-042-100 STRIP	TA-V STRIP BLADE
123799-7	2V-062-105 STRIP	TA-V STRIP BLADE
123799-8	2V-052-135 STRIP	TA-V STRIP BLADE
123799-9	2V-052-042 STRIP	TA-V STRIP BLADE
123799-10	2V-042-140 STRIP	TA-V STRIP BLADE
123799-11	2V-042-120 STRIP	TA-V STRIP BLADE

ITEM NUMBER	DESCRIPTION	CLASS
123799-12	2V-042-110 STRIP	TA-V STRIP BLADE
123799-13	2V-052-105 STRIP	TA-V STRIP BLADE
123799-14	2V-034-100 STRIP	TA-V STRIP BLADE
123799-15	2V-030-060 STRIP	TA-V STRIP BLADE
123799-16	2V-030-050 STRIP	TA-V STRIP BLADE
123799-17	2V-030-055 STRIP	TA-V STRIP BLADE
123799-18	2V-042-072 STRIP	TA-V STRIP BLADE
123799-19	2V-076-140 STRIP	TA-V STRIP BLADE
123799-20	2V-022-054 STRIP	TA-V STRIP BLADE
123799-21	2V-016-026 STRIP	TA-V STRIP BLADE
123799-22	2V-030-065 STRIP	TA-V STRIP BLADE

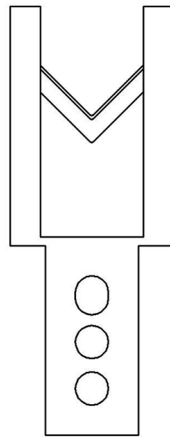
TANGENT RADIUS “V” STRIP BLADE

The sharp edge is ground tangent to an arc whose radius approximates awg wire size. The entry angle lines meet the arc at a tangent point. This type of blade, when closed, presents a diamond shaped edge profile.

Advantages: By adjusting cutter head shut height, (if insulation material and wall thickness allow), you can process adjacent wire extrusions.

Disadvantages: Inadequate for processing thin wall and/or hard insulations such as cross-link or fiberglass jackets.

- TC Coating Available -



123987-1 BLT

DIA MM SIZE	ITEM NUMBER	OEM #
0.45	123987-1BLT	8961C