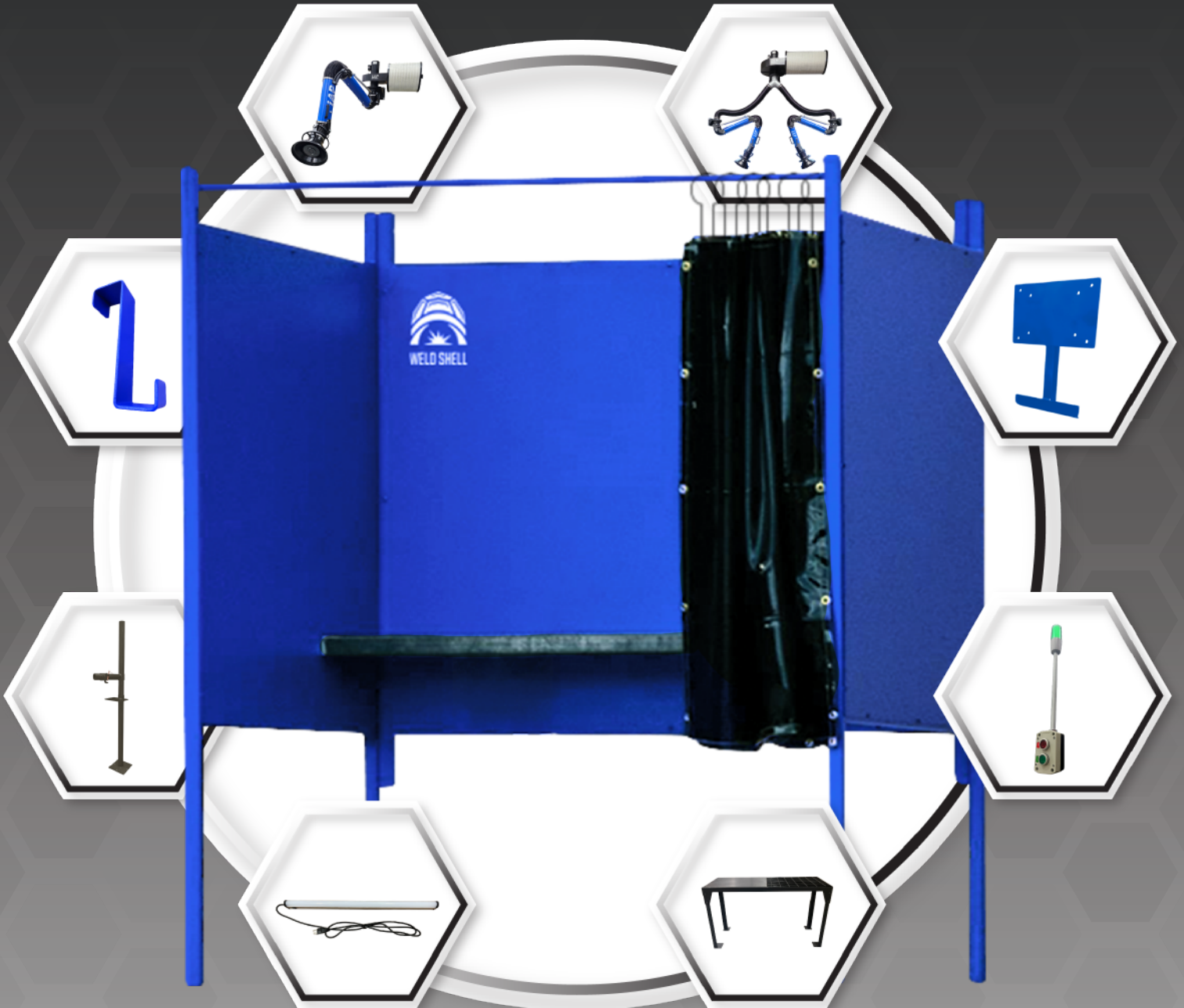




WELD SHELL



sales@iap-airproducts.com
888-372-0050
www.iap-airproducts.com



MADE IN
USA

WELDING BOOTH MODELS

MODEL NUMBER	INNER DIM	OUTER DIM
WELDSHELL-4X4	48"x46.5"x78"	51"x48"x78"
WELDSHELL-5X5	60"x58"x78"	63"x59.5"x78"
WELDSHELL-6X6	72"x72"x78"	75"x73.5"x78"

1

Easiest installation among competitors, utilizing pre-installed rev-nuts to limit excessive hardware

2

Reinforced side panels encased in dual layered 14 gauge metal sheeting for maximum strength and durability

3

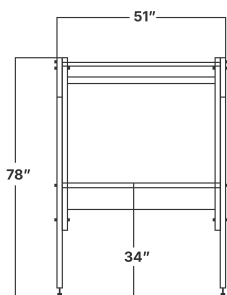
Unique design can reduce cost up to 25% by having the ability to share side panels

4

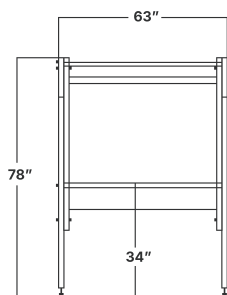
Comes standard with curtain rod and 11 gauge rear bolt in table

5

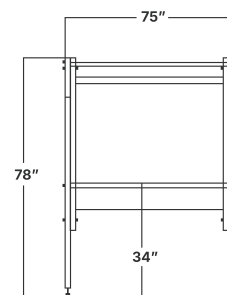
Comprehensive range of accessories to create a complete package



WELDSHELL-4X4

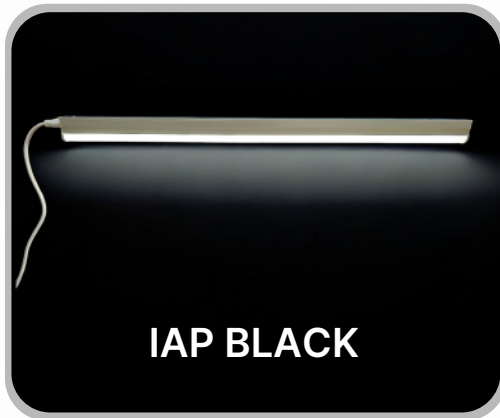


WELDSHELL-5X5



WELDSHELL-6X6

COLOR OPTIONS



ACCESSORIES

LED LIGHT KIT:

WELDSHELL-LK:

2' LED Light Bars for 4×4,
5×5, or 6×6 Welding Booths



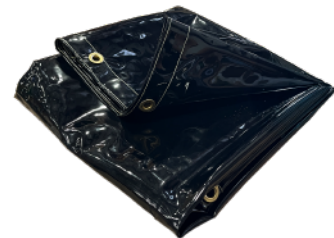
WELDING CURTAINS:

WELDSHELL-WC-4X4/5X5:

Shade 8 (Black) Welding
Curtains for 4×4 and 5×5
Welding Booths

WELDSHELL-WC-6X6:

Shade 8 (Black) Welding
Curtains for 6×6 Welding
Booths



FUME ARM CORNER MOUNT:

WELDSHELL-FA-BR-04:

This option allows for 4" fume
arms to have a supporting wall
behind your booth.

WELDSHELL-FA-BR-06/08:

This option allows for 6" and 8"
fume arms to have a supporting
wall behind your booth.



J-HOOK:

WELDSHELL-JH:

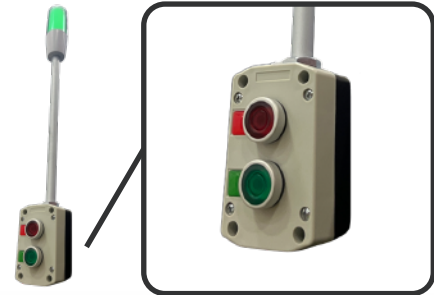
These simple J-Hooks connect over the top of either the side or back panels, allowing for easy organization of gear (helmets, jackets, etc.).



STUDENT SAFETY ALERT LIGHT:

WELDSHELL-SSAL:

The Student Safety Alert Light mounts easily to the side of a welding booth, allowing students to clearly signal their status to the instructor. The unit includes a prewired 120V power cord for quick and convenient setup.



STAND-ALONE TABLES:

WELDSHELL-SAT-FS (Full Steel):

Stand-Alone Table for 4×4 and 5×5 welding booths to replace standard bolt-in table. Full steel top. Comes in either blue or black coloring.



WELDSHELL-SAT-FG (Full Grate):

Stand-Alone Table for 4×4 and 5×5 welding booths to replace standard bolt-in table. Full Grate Top. Comes in either blue or black coloring.



WELDSHELL-SAT-HSHG (Half Steel/Half Grate):

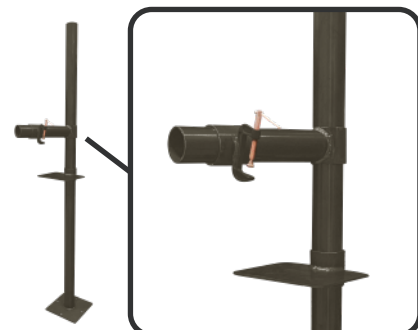
Stand-Alone Table for 4×4 and 5×5 welding booths to replace standard bolt-in table. Half steel/half grate top. Comes in either blue or black coloring.



PIPE WELDING STAND:

WELDSHELL-PWS:

Pipe Welding Stand for Welding Booth. Stands at 84" height. Includes adjustable welding table, adjustable horizontal pipe arm with clamp, and vertical adjustment holes with pins for locking.



FUME ARM FILTRATION (FAF):

Captures weld fume/smoke and recirculates clean air back into the room without the need of any ductwork. Models offered in 4", 6", and 8" arm diameter.



DUAL FUME ARM FILTRATION:

Designed to support two fume arms using a single fan and filter system-making them an efficient solution for multiple weld booth setups. Combining dual extraction into one system helps conserve space and reduce overall costs. Models are offered in 4", 6", and 8" arm diameter.



FUME ARM WITH DIRECT MOUNT FAN:

Can be mounted directly to the fume arm and exhausted outside. This allows direct control of each arm being used. Models are offered in 4", 6", and 8" arm diameters.



HANGING FUME ARMS:

IAP Hanging Fume Arms can be tied into a central exhaust fan or fume collector system. These arms come in a variety of diameter and lengths depending on the application. Models are offered in 4", 6", and 8".

