



WELD SHELL



WELDING BOOTH MODELS

| MODEL NUMBER | INNER DIM | OUTER DIM |
|--------------|-----------------|---------------|
| WWS-0404 | 48"x48"x78" | 51"x49.5"x78" |
| WWS-0505 | 60"x59.5"x78" | 63"x61"x78" |
| WWS-0606 | 71.5"x71.5"x78" | 74.5"x73"x78" |

1

14 gauge wall construction,
11 gauge tables

2

Rear bolt in table and curtain
rod included as standard

3

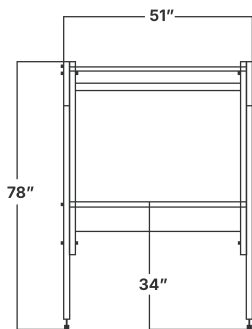
Ability to share side panels to
reduce cost by up to 25%

4

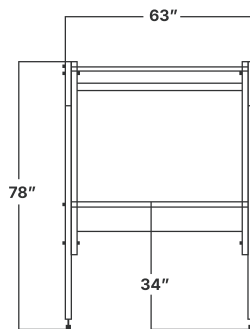
Each side wall features dual panels
for maximum structural rigidity

5

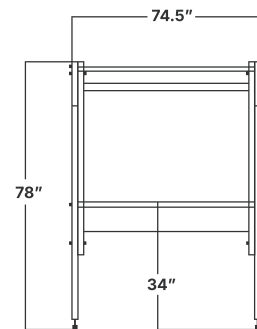
Easiest installation among competitors. We utilize pre-installed rev-nuts in
all of our booths to limit hardware



WWS-0404



WWS-0505



WWS-0606

COLOR OPTIONS



ACCESSORIES

LED LIGHT KIT:

WW-LK-2:

2' LED Light Bars for 4×4
or 5×5 Welding Booths



WELDING CURTAINS:

WWS-4×6:

Shade 8 (Black) Welding
Curtains for 4×4 and 5×5
Welding Booths

WWS-6×8:

Shade 8 (Black) Welding
Curtains for 6×6 Welding
Booths



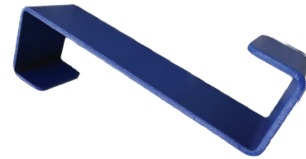
FUME ARM BRACKET:

WWS-BR: This option allows for fume arms to be
attached to the walls of the booth in case you do
not have a supporting wall behind your booth.



J-HOOK:

These simple J-Hooks connect over the top of either the side or back panels and allow you to easily organize your welding booth by giving you places to hang your cords, helmets, etc.



STAND-ALONE TABLES:

These Tables replace the standard bolt in table in welding booths. Designed for your choice of either a hot-rolled, flat steel top or a grated pass-through top. These tables give you more flexibility in positioning inside your booth as well as being able to hold more weight.



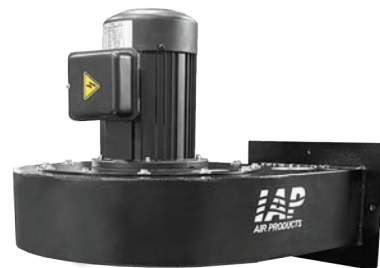
FUME ARM FILTRATION (FAF):

These units allow for your weld smoke to be captured and the clean air recirculated back into your room without the need of any ductwork. Models are offered in 4", 6", and 8" arm diameter. We also offer a Dual Fume Arm Filtration Unit used to cover multiple booths with (1) fan and filter.



FUME ARM WITH DIRECT MOUNT FAN:

This option allows for a fan to be mounted directly to the fume arm and the weld smoke to exhaust outside. This allows direct control of each arm being used so that no conditioned air is wasted. Models are offered in 4", 6", and 8" arm diameters.



HANGING FUME ARMS:

This option allows for arms to be tied into a central exhaust fan or fume collector system. These arms come in a variety of diameter and lengths depending on what you need. Models are offered in 4", 6", and 8".

